

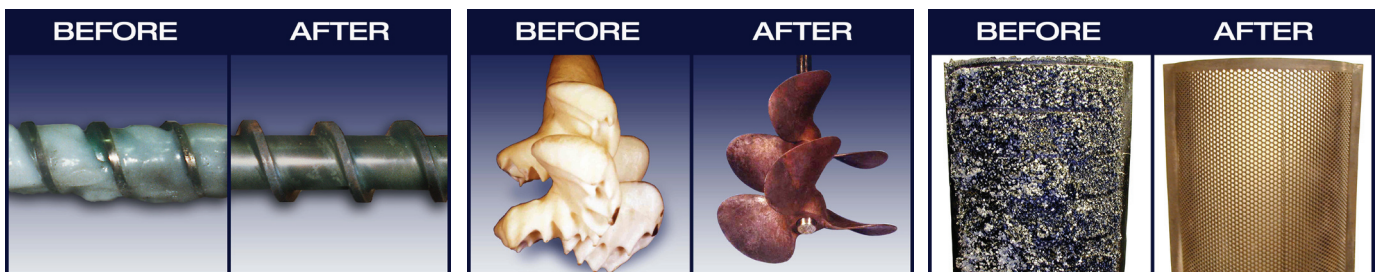
POLLUTION CONTROL PRODUCTS CO.

Model SCTR Burn-Off Oven FOR PLASTIC & FIBER APPLICATIONS

Designed by a polymer chemist to safely remove polymers, adhesives and chemicals from *EXTRUSION SCREWS* and other metal parts and tooling – *POLLUTION FREE!*

- Controlled Pyrolysis is a safe and gentle process that extends the life of parts and tooling, *POLLUTION-FREE*.
- Easy to operate self-adjusting control system reduces labor and machinery down-time.
- Automatic time cycle ensures the oven runs only long enough to clean parts.
- Carefully reduces oxygen at the point of polymer decomposition and then increases the atmosphere to eliminate carbon residues.
- Diagnostic Panel fully monitors and displays 15 operating functions.

***FASTEST DELIVERY TIMES
IN THE INDUSTRY!***



For more product information, case histories and company news, go to:

www.pcpconline.com

Pollution Control Products Co.

2677 Freewood Drive, Dallas, Texas 75220

Phone: 214-358-1539, Fax: 214-358-3379

For a Free Test Cleaning call Sales at 214-358-1539

sales@pcpconline.com

Specifications and Data

Cabinet: Heavy Gauge sheet steel supported by structural steel angles and channels, and covered by heavy-gauge sheet metal shell.

Floor: Hard castable refractory, reinforced with structural steel channels. Allows easy removal of ashes.

Doors: Equipped with cam-type lock assemblies and tad pole sealing gaskets. Door opens 95°.

Explosion Relief: Unique gravity –sealed top relief door automatically opens to relieve excess pressure, then closes, preventing air from reacting with combustible material.

Insulation: Walls and ceilings are covered with 3” of a two layer light weight ceramic fiber insulation and 1/8” vapor barrier to prevent corrosion. Perforated metal liner protects insulation. Hot face insulation rated at 2300°F (1260°C)

Vent Stack: Made in 36” light-weight sections for easy installation. Stainless Steel exterior with high temperature hardened ceramic fiber (rated at 2300° F). Adjustable-pitch flashing, storm collar, and rain cap are furnished with stack.

Before



After



UNIQUE FEATURES

Oxidation Pyrolysis Mode

Oven self-monitors oxygen content, taking extra care to lower oxygen at potential flash points and then raising it later to complete the cleaning cycle.

Extra Insulation / Outer Skin

Provides more insulation (3 inches throughout) than any other cleaning furnace available. Double-walled outer skin insures cooler outside temperatures even when operating internally at 900°F.

Diagnostic Panel

Monitors furnace components during start-up and advises the operator of any abnormalities during the cleaning cycle.

Fuels: Natural Gas, Propane, Fuel Oil #2. Requires gas pressure of 7 inches water column while the furnace is operating.

Electrical Service: 110-125 V, 50-60 Hz, single phase, 5 ampere draw

Water Supply: Minimum Pressure 40 psi; Maximum 100 psi for water injection system. Max flow rate for primary system 0.3 gpm (1.2 liter/min).

Normal Cycle Time: 3-4 hours plus cooling time. Longer cycle may be required for extra heavy build up. Timer adjustable 0-12 hours.

Normal Cycle Temperature: 800°F–900°F (432°C – 482°C)

Pollution Standards: Meets latest EPA standards

Safety & Health Standards: Meets latest O.S.H.A. Federal Standards

Insurance Standards: Meets most state & local codes. Burners can be easily equipped to meet Factory Mutual, C.G.A. or Industrial Risk Insurers Standards

Mechanical Dimensions

Model Number	Interior Dimensions (inches)			Exterior Dimensions (inches)				Approximate Shipping Weight (lbs)
	Width	Depth	Height	Width	Depth	At Front	At Rear	
SCTR-6	15	75	15	47	108	64	88	3275
SCTR-9	15	111	15	47	144	64	88	3900
SCTR-12	15	147	15	47	180	64	88	4500
SCTR-16	15	195	15	47	228	64	88	6640

Various sizes available