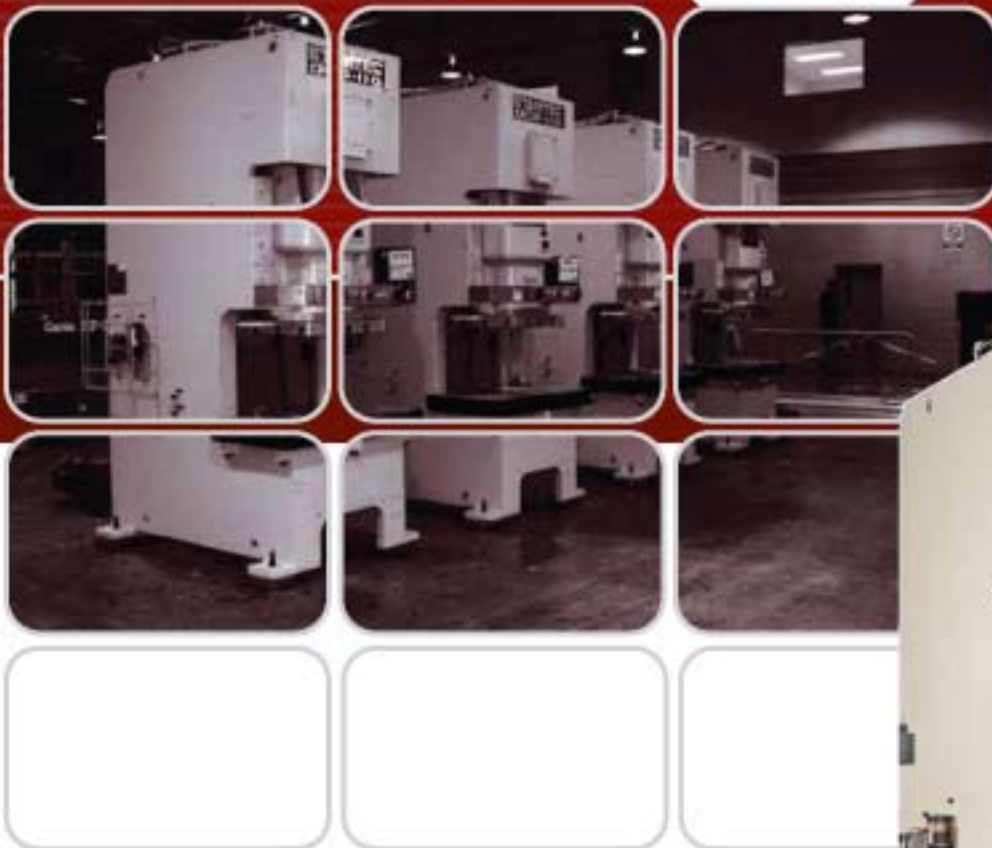


**Single Point / Gap Frame**  
Power Presses

# OCP



25 . 35 . 45 . 60 . 80 . 110 . 160 . 200 . 260 ton

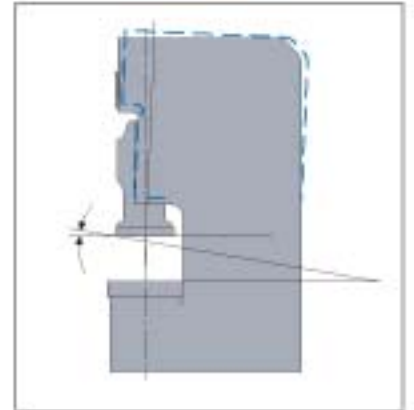
# OCP SERIES



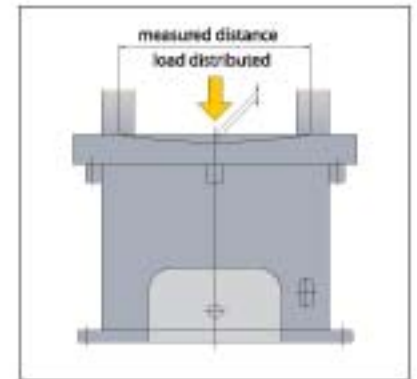
Single Point

Gap Frame

Press



The heavy, one-piece welded steel frame is fully stress relieved and designed to resist deflection and provide accurate stampings and longer die life.



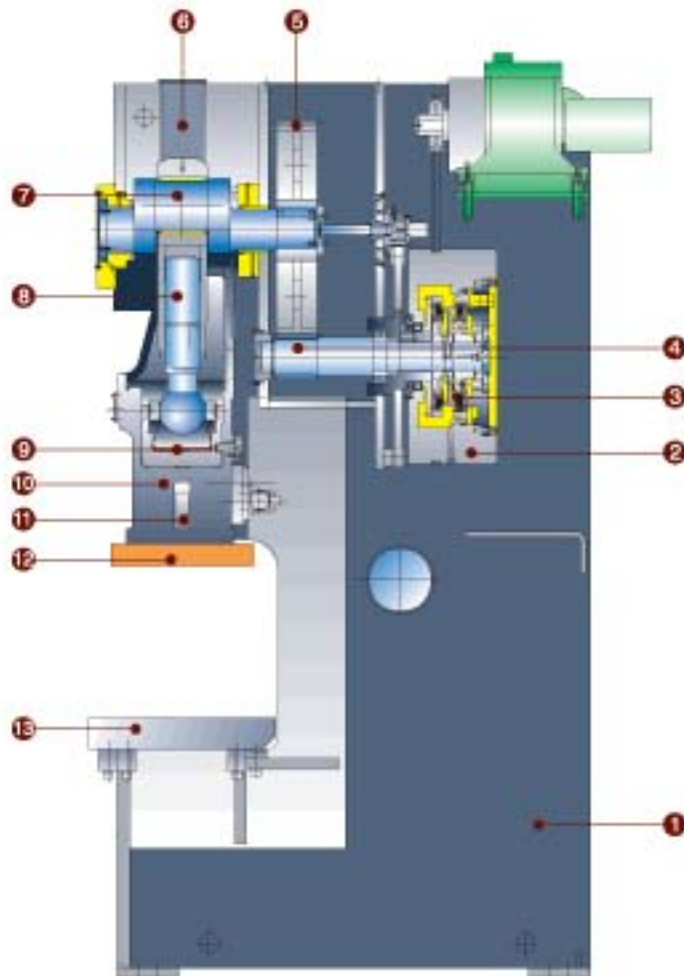
## The world leader in Gap Frame press design.

The new Stamtec OCP single point, gap frame press offers more features and more design advances than any similar machine. What's more, you'll be pleased at the very competitive pricing and the choice of many models from our large inventory of stock machines.

Exceptional resistance to deflection is a hallmark of Stamtec press design. You'll be impressed with the part quality and die life that the OCP delivers.

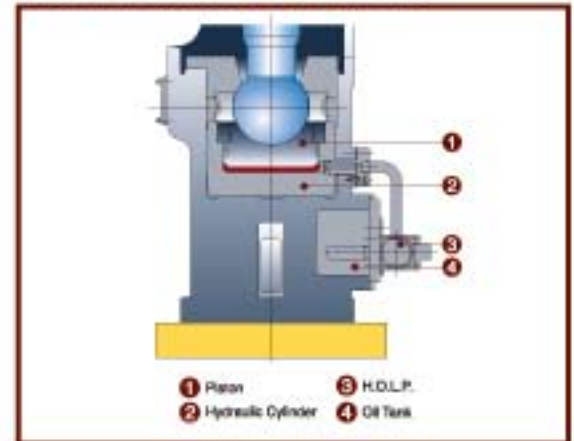
# Features ... Delivery ... Value

# STAMTEC®



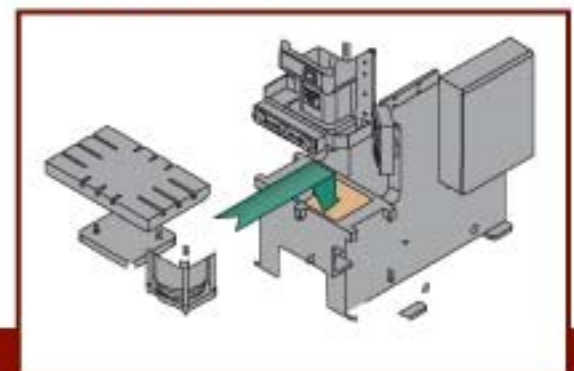
- |                       |                                 |
|-----------------------|---------------------------------|
| 1. Press Frame        | 8. Adjusting Screw              |
| 2. Flywheel           | 9. Hydraulic Overload Protector |
| 3. Wet Clutch & Brake | 10. Slide                       |
| 4. Pinion Drive Shaft | 11. Slide Knockout              |
| 5. Main Gear          | 12. Slide Plate (detachable)    |
| 6. Counterbalance     | 13. Bolster                     |
| 7. Crankshaft         |                                 |

## Overload Protection



- |                       |             |
|-----------------------|-------------|
| 1. Piston             | 3. H.O.L.P. |
| 2. Hydraulic Cylinder | 4. Oil Tank |

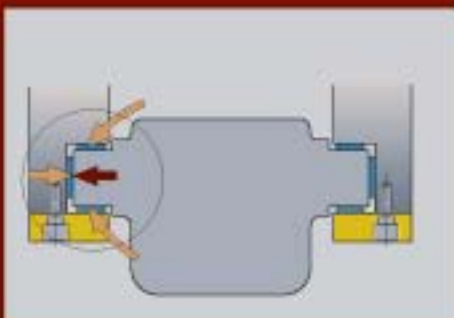
## Die Cushion



Compact design avoids the need for a die cushion under the press. Cushion is bolted to the bolster for quick removal to allow clear access for maintenance.

## Six-Point, Extra-Long Precision Gibbing

Extra-long gibs fully guide the slide during the working portion of the stroke. Force to the slide is delivered vertically, eliminating lateral thrust against the gibs, even under off-center loads.





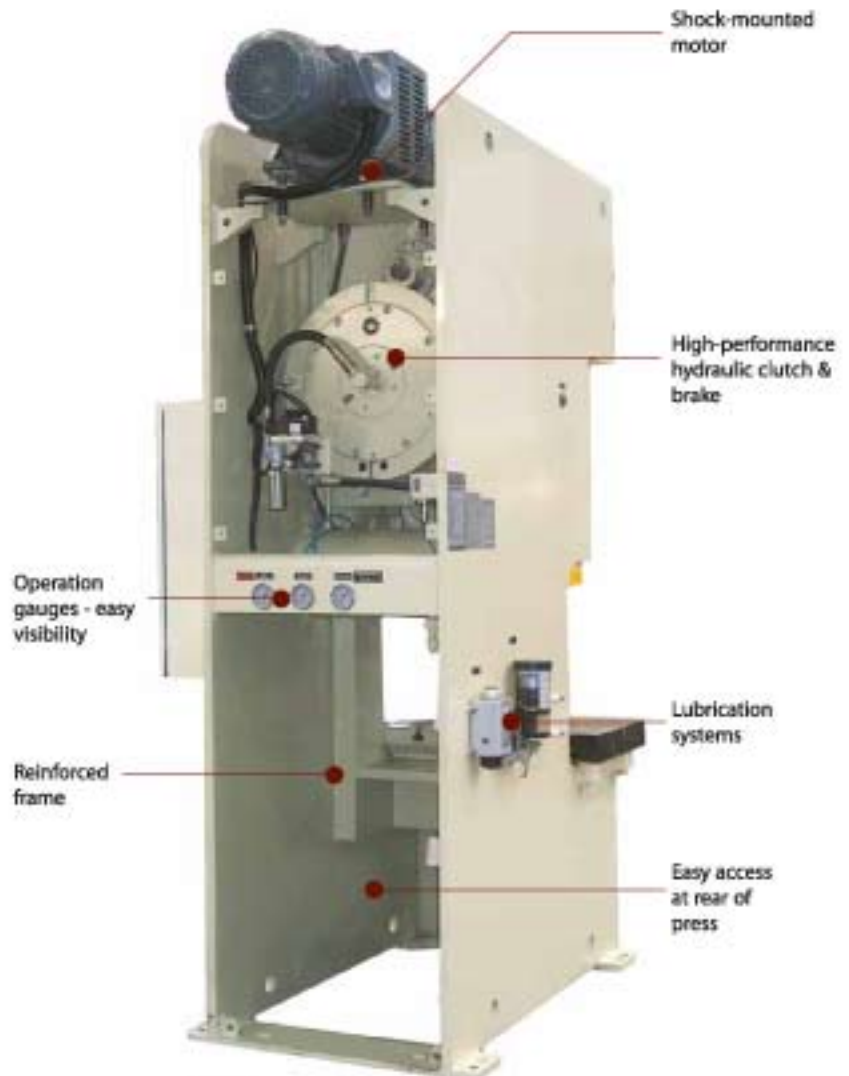
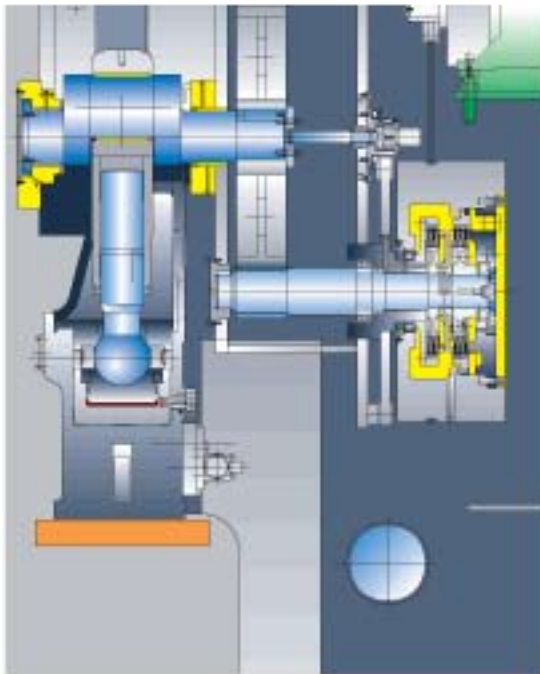
# High Performance Hydraulic Clutch

Performance

Control

Torque & Reliability

Reliable and efficient performance from a new hydraulic clutch and brake design by Stamtec...



NOTE: Rear guard removed for photo.

The Stamtec hydraulic clutch delivers rated torque at relatively low air pressure, reducing lining wear and air consumption. Lining life is extended by the effective heat dissipation resulting from the linings running in an enclosed oil bath.

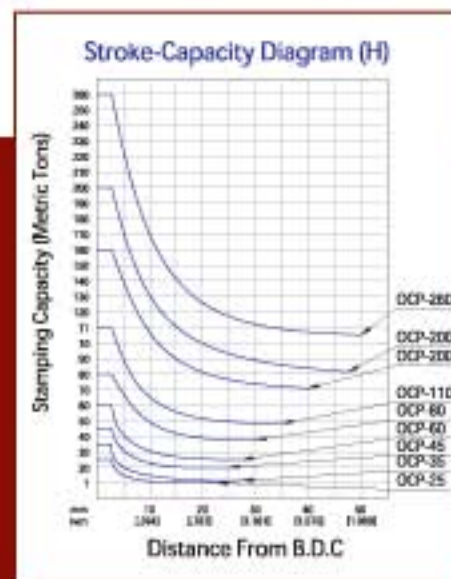
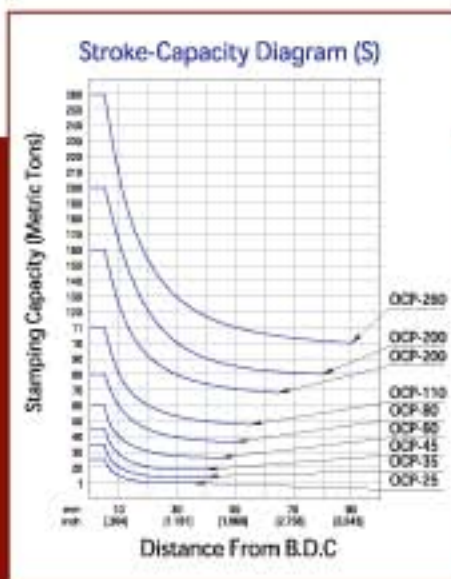
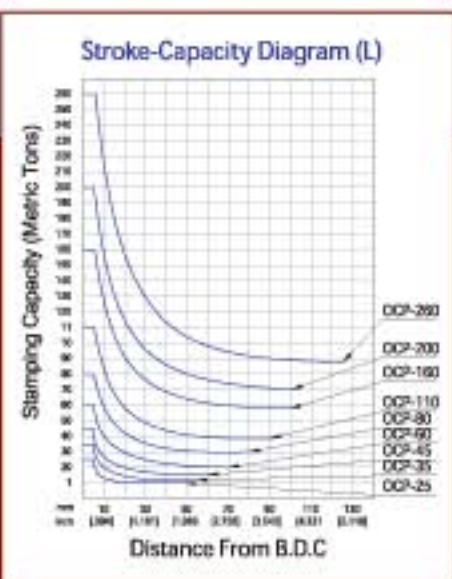
Low inertia significantly reduces lining wear. High performance is combined with low vibration and noise. Higher single stroke rates are achieved.

The OCP Series is such a compact design, it allows a larger capacity press to be accommodated in the same space as a smaller press. The space required for (4) traditional presses is space enough for (5) OCP Series presses.



# Main Specifications

MODEL	OCP-25			OCP-35			OCP-45			OCP-60			OCP-80			OCP-110			OCP-160				OCP-200				OCP-260																			
TYPE	S	H	L	S	H	L	S	H	L	S	H	L	S	H	L	S	H	L	S	H	L	XL	S	H	L	XL	S	H	L	XL																
Capacity	27.76			38.89			50			66.67			88.89			122.22			177.76				222.2				288.86																			
Rated Tonnage (Above B.D.C.)	0.13 3.2	0.06 1.6	0.13 3.2	0.13 3.2	0.06 1.6	0.13 3.2	0.13 3.2	0.09 2.3	0.13 3.2	0.16 4	0.09 2.3	0.16 4	0.20 5	0.13 3.2	0.20 5	0.20 5	0.13 3.2	0.20 5	0.24 6	0.16 4	0.24 6	0.24 6	0.24 6	0.16 4	0.24 6	0.24 6	0.26 6.5	0.16 4	0.26 6.5	0.26 6.5																
Stroke Length	2.76 70	1.67 40	3.94 100	3.15 80	1.77 45	4.33 110	3.15 80	1.97 50	4.72 120	3.54 90	2.17 55	5.51 140	3.94 100	2.36 60	6.30 160	4.33 110	2.76 70	7.09 180	5.12 130	3.15 80	7.87 200	9.84 250	5.91 150	3.74 95	7.87 200	9.84 250	7.09 180	3.94 100	9.84 250	11.81 300																
Strokes Per Min.	75-140	85-180	55-100	70-135	90-180	50-85	65-130	85-175	50-85	60-120	80-165	40-85	55-110	75-150	40-75	50-100	65-135	30-65	40-85	55-115	25-50	20-45	35-70	45-95	20-40	20-40	30-60	40-75	20-40	20-35																
Die Height	9.65 245	9.65 245	9.06 230	9.84 250	9.84 250	9.25 235	9.84 250	9.84 250	10.63 270	10.63 270	10.63 270	11.81 300	11.81 300	11.81 300	12.99 330	12.60 320	12.60 320	13.78 350	13.78 350	13.78 350	15.75 450	17.72 450	16.14 410	16.14 410	17.72 450	17.72 450	18.11 460	18.11 460	19.69 500	21.26 540																
Slide Adjustment	1.97 50			2.17 55			2.36 60			2.76 70			3.15 80			3.54 90			3.94 100				4.33 110				4.72 120																			
Bolster Area (LR x FB)	28.35x9.06 720x230			30.71x13.40 780x340			33.50x14.18 850x360			33.5x17.3 850x440			35.44x15.75 900x400			35.44x20.48 900x520			39.35x18.11 1000x460			39.38x23.6 1000x600			45.28x20.48 1150x520		45.28x26.78 1150x680		49.2x23.6 1250x600		49.2x29.93 1250x790		53.15x29.9 1350x760		55.12x26.78 1400x680		55.12x32.3 1400x820		59x32.3 1500x820		59x27.6 1500x700		59x33.9 1500x960		69x35.43 1750x900	
Bolster Thickness	2.76 70	3.25 82.5	2.76 70	2.76 70	3.25 82.5	2.76 70	3.54 90	4.13 105	3.54 90	3.54 90	4.13 107.5	3.54 90	3.94 100	4.72 120	3.94 100	4.72 120	5.51 140	4.72 120	5.91 150	6.89 175	5.91 150	6.89 170	7.78 197.5	6.89 170	7.09 180	8.66 220	7.09 180	7.09 180	8.66 220	7.09 180																
Slide Area (LR x FB)	13.78x11.81 350x300			14.96x12.60 380x320			16.93x13.78 430x350			19.68x15.75 500x400			22.10x18.11 560x460			25.59x20.47 650x520			27.56x22.83 700x580				33.46x25.59 850x650				37.40x27.56 950x700																			
Main Motor (VS)	5			5			7.5			7.5			10			15			15				20				25																			
Side Adj. Motor	Manual			Manual			0.2			0.3			0.3			0.3			0.6				1				2																			
Die Cushion																																														
Capacity	-			2.9			2.9			4			6.9			8.8			11				15				15																			
Pad Area (LR x FB)	-			11.81x9.06 300x230			13.19x9.06 335x230			13.78x9.25 350x235			16.14x10.24 410x260			19.68x11.81 500x300			21.26x13.78 540x350				25.20x18.50 640x470				27.56x18.50 700x470																			
Stroke	-			1.97 50			2.36 60			2.76 70			2.76 70			3.15 80			3.15 80				3.94 100				3.94 100																			
Machine Dimension																																														
Width (LR)	35.43 900			36.61 930			37.40 950			40.16 1020			43.82 1113			49.02 1245			55.91 1420		59.08 1500		59.84 1520		62.20 1580		69.57 1767		81.38 2067																	
Depth (FB)	40.35 1025			47.24 1200			65.34 1665		67.91 1725	69.09 1755		71.46 1815	71.65 1820	74.41 1890		80.51 1245	85.63 2175	85.83 2180	90.87 2308		94.69 2405		97.05 1580		98.19 2240		94.49 2400	100.39 2550																		
Height (H)	73.62 1870			82.68 2100			90.75 2305		93.11 2365	88.23 2495		101.38 2575	108.82 2764	112.36 2854	115.35 2930	119.29 3030	126.74 3270	133.46 3390		137.40 3490		144.29 3665		147.83 3755		149.80 3805	163.39 4150	168.90 4290	172.44 4380																	



Option	City	Model	OCP-25		OCP-35		OCP-45		OCP-60		OCP-80		OCP-110		OCP-160		OCP-200		OCP-260	
			S	H	S	H	S	H	S	H	S	H	S	H	S	H	S	H	S	H
DL2 or TY2		Damping Force 2 tons / pc	4	4	4	4	4	4	4	4	4	4	4	4	4	4	4	4	4	4
TX4 or TY4		Damping Force 4 tons / pc																		
TX6 or TY6		Damping Force 6 tons / pc																		
DL2 or TY2		Damping Force 2 tons / pc	4	4	4	4	4	4	4	4	4	4	4	4	4	4	4	4	4	4
TX4 or TY4		Damping Force 4 tons / pc																		
TX6 or TY6		Damping Force 6 tons / pc																		
DL2-600		Payload 1.1 tons / pc																		
DL2-600		Payload 1.2 tons / pc																		
DL2-600		Payload 1.4 tons / pc																		
DL2-700		Payload 1.5 tons / pc																		
DL2-800		Payload 1.8 tons / pc																		
RC-700-800		Payload 600kg / pc	2	2	2	2	2	2	2	2	2	2	2	2	2	2	2	2	2	2
RD-800-80		Payload 600kg / pc																		
RC-800-80		Payload 600kg / pc																		
Hydraulic Power Unit P7600BU																				



# OmniLink System

## 5100-MPC Press Controls



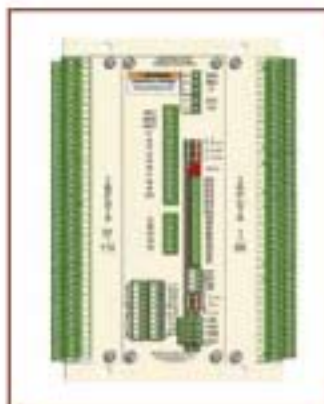
Link's custom engineered OmniLink System 5100-MPC part revolution mechanical power press controls provide unmatched features and flexibility to achieve the ultimate in pressroom productivity and safety at modest cost.

**OmniLink 805 Operator Terminal:** The user friendly OmniLink 805 Operator Terminal uses a Color 5.7"LCD TFT with 640 x 480 pixel resolution and touch screen.

OmniLink System 5100-MPC Press Controls are designed to meet all functional safety requirements of current and anticipated OSHA 29 CFR 1910.217, ANSI B11.1, and CSA Z142 standards, and to provide safety features in addition to these standards when properly applied, adjusted, installed and used.

## STANDARD FEATURES

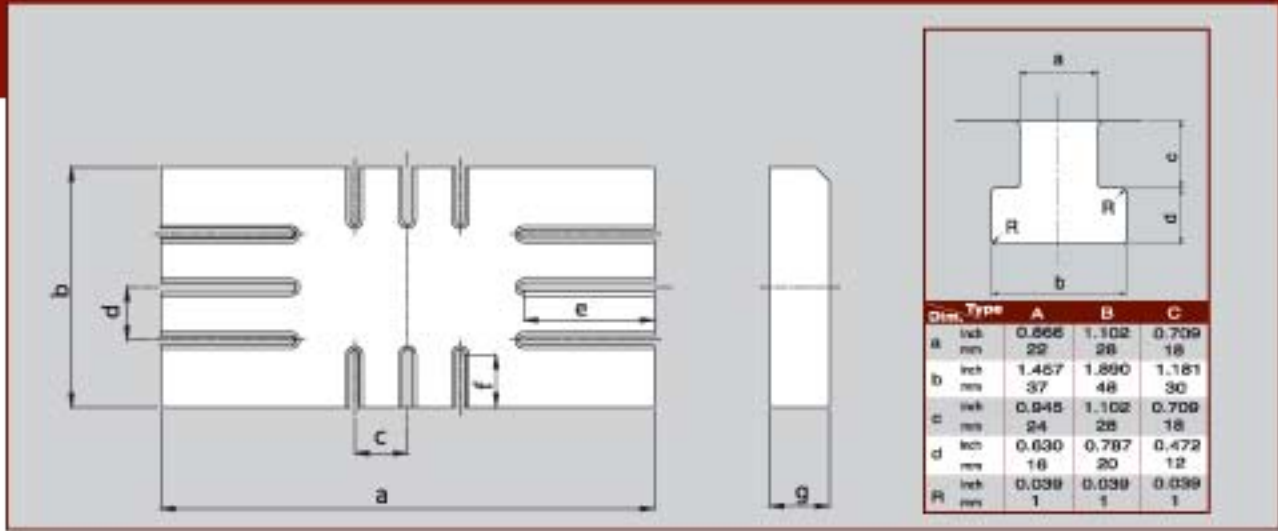
- **Stopping Time Performance (Brake) Monitor**
- **Motion Detection**
- **Clutch Engagement Time Monitor**
- **Counters:** Four counters are standard.
- **Die Protection:** Four Die Protection/Process Monitoring inputs standard.
- **Job Storage and Recall:** Parameters for up to 100 jobs can be stored.
- **Diagnostics:** The intelligent diagnostics of the OmniLink System 5100-MPC control are displayed in English or Spanish.
- **Stroking Modes:** Off, Inch, Automatic Timed Inch, Setup/Stop Time Test, Single Stroke (Cycle), and Continuous are standard, Automatic Single Stroke (Cycle), Maintained Continuous, and Continuous on Demand are optional.
- **Event Log:** Displays the date, time and reason for the last 256 stops.
- **Displays:** All system information in either English or Spanish.
- **Automatic Top Stop Compensation:** Automatically compensates top stop for speed to stop variable speed presses at top of stroke over the entire speed range.



## OPTIONAL FEATURES

- **PLS Outputs:** Either four or eight optional programmable limit switch outputs are available to sequence and time automation with the stroking of the press.
- **Analog Speed Control/Load Option**
- **Tonnage Monitor:** 2 or 4 channel peak forward and reverse.
- **LinkNet:** The optional LinkNet information system allows presses equipped with the OmniLink System 5100 control to be connected with a computer equipped with Link's LinkNet software via a serial communications network.
- **Optional AD1 Angle/Speed Displays:** These displays provide a large graphical circular crankshaft position indicator and digital display of angle or stroking speed for visibility at a distance.
- **Communication Card:** For serial feed interface and/or LinkNet.
- **Safety Relay Modules:** Up to four safety relay outputs. These relays can be used to give automation used with the press production system control reliable stop signals when an emergency stop, light curtain or other protective input stop signal occurs.

# Bolster Dimensions



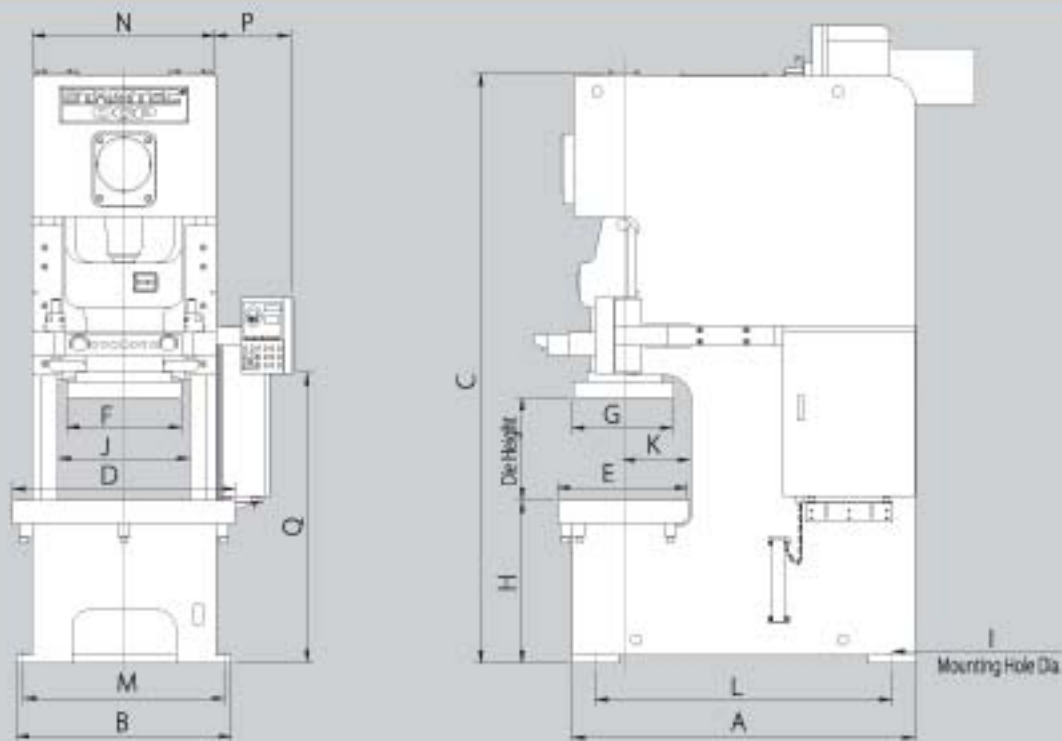
MODEL	OCP-25		OCP-35		OCP-45		OCP-60		OCP-80		OCP-110		OCP-160			OCP-200			OCP-260				
Type	S/H	L	S/H	L	S/H	L	S/H	L	S/H	L	S/H	L	S/H	L	XL	S/H	L	XL	S/H	L	XL		
Type of T-Slot	C		C		C		A		A		B		B			B			B				
a	Inch mm	28.35 720	30.71 780		33.48 850		35.43 900		39.73 10000		45.28 1150		49.21 1250		53.15 1350	55.12 1400		59.08 1500		59.08 1500		68.90 1750	
b	Inch mm	12.60 320	13.39 340		14.18 360	17.32 440	15.75 400	20.47 520	18.11 460	23.62 600	20.47 520	26.77 680	23.62 600	29.92 760	31.10 790	26.77 680	32.28 820	33.48 850		27.56 700	35.43 900		
c	Inch mm	5.91 150	5.91 150		5.91 150		5.91 150		5.91 150		5.91 150		5.91 150			5.91 150			5.91 150				
d	Inch mm	- -	-		-		-		5.91 150		5.91 150		5.91 150			5.91 150			5.91 150				
e	Inch mm	5.91 150	6.69 170		8.86 225		8.86 225		9.25 235		11.22 285		14.37 365			14.57 370			17.32 440				
f	Inch mm	3.94 100	3.94 100		3.74 95		3.35 85		2.95 75		3.54 90		5.51 140			5.51 140			7.87 200				
g	Inch mm	2.78 70	2.78 70		3.54 90		3.54 90		3.94 100		4.72 120		5.91 150			5.91 150			6.69 170			7.09 180	

# Slide Plate Dimensions

MODEL	OCP-25		OCP-35		OCP-45		OCP-60		OCP-80		OCP-110		OCP-160		OCP-200		OCP-260	
Slide Plate (L/R/FB)	Inch mm	13.78x11.81 350x300	14.98x12.80 380x320		16.83x13.78 430x350		16.66x15.75 500x400		22.06x18.11 560x460		25.29x20.47 650x520		27.58x22.83 700x580		33.48x25.58 850x650		37.40x27.58 950x700	
Type of T-Slot		C	C		C		A		A		B		B		B		B	
No. of T-Slot		2	2		2		2		2		2		4		4		4	
Shank Hold Diameter (D)	Inch mm	1.50 38	1.50 38		1.50 38		1.97 50		1.97 50		1.97 50		2.58 65		2.58 65		2.58 65	
a	Inch mm	- -	-		-		-		-		-		-		5.91 150		5.91 150	
b	Inch mm	5.91 150	5.91 150		5.91 150		5.91 150		5.91 150		5.91 150		9.84 250		11.81 300		11.81 300	
c	Inch mm	1.97 50	1.97 50		1.97 50		2.97 75		2.97 75		3.15 80		3.54 90		3.54 90		3.54 90	



# Outline Dimensions



MODEL	OCP-25			OCP-35			OCP-45			OCP-60			OCP-80			OCP-110			OCP-160			OCP-200			OCP-260										
TYPE	S	H	L	S	H	L	S	H	L	S	H	L	S	H	L	S	H	L	S	H	L	XL	S	H	L	XL	S	H	L	XL					
A	Inch mm	40.35 1025		47.24 1200	51.96 1300	54.33 1380	57.99 1473	54.33 1380	57.99 1473	60.04 1525	65.94 1675	68.31 1735	70.28 1785	77.54 1970	85.83 2180	81.30 2065	86.42 2195	87.20 2215	88.19 2240	94.49 2400	94.49 2400	100.39 2550													
B	Inch mm	28.35 720		31.10 790	31.50 800	34.65 880	39.37 1000	43.70 1100	50.39 1280	53.54 1360	53.94 1370	56.30 1430	60.43 1535	64.96 1650																					
C	Inch mm	81.50 2070		87.01 2210	91.54 2325	93.11 2365	99.21 2520	101.37 2575	111.00 2820	113.39 2880	117.32 2980	119.88 3045	130.31 3310	133.66 3395	137.4 3490	149.21 3790	151.77 3855	153.74 3905	163.39 4150	168.90 4290	168.90 4290	172.44 4380													
D	Inch mm	28.35 720		30.71 780	33.46 850	35.43 900	39.37 1000	45.28 1150	49.21 1250	53.15 1350	55.12 1400	59.06 1500	59.06 1500	68.90 1750																					
E	Inch mm	12.60 320		13.39 340	14.17 360	17.32 440	15.75 400	20.47 520	18.11 460	23.62 600	20.47 520	26.77 680	23.62 600	29.52 760	31.10 790	26.77 680	32.28 820	33.46 850	27.56 700	35.43 900															
F	Inch mm	13.78 350		14.96 380	16.93 430	19.69 500	22.05 560	25.59 650	27.56 700	33.46 850	36.22 920																								
G	Inch mm	11.81 300		12.60 320	13.78 350	15.75 400	18.11 460	20.47 520	22.83 580	25.59 650	27.56 700	33.46 850	36.22 920																						
H	Inch mm	31.50 800	32.09 815	31.50 800	31.50 800	32.09 815	31.50 800	31.50 800	31.50 800	32.09 815	31.50 800	32.09 815	31.50 800	32.09 815	31.50 800	32.09 815	31.50 800	32.09 815	31.50 800	32.09 815	31.50 800	32.09 815	31.50 800	32.09 815	31.50 800	32.09 815	31.50 800	32.09 815	31.50 800	32.09 815	31.50 800	32.09 815	31.50 800	32.09 815	
I	Inch mm	1.1 28		1.1 28	1.1 28	1.1 28	1.1 28	1.37 35	1.37 35	1.85 47	1.85 47	1.85 47																							
J	Inch mm	16.82 428		19.76 502	20.08 510	21.02 534	23.54 598	26.77 680	29.52 750	32.68 830	33.46 850	33.86 860	37.40 950	50.00 1270																					
K	Inch mm	6.50 165		6.89 175	7.48 190	9.06 230	8.27 210	10.65 270	9.45 240	12.20 310	10.65 270	13.78 350	60.07 1510	15.35 390	16.54 420	13.78 350	16.54 420	17.72 450	14.17 360	18.11 460															
L	Inch mm	31.87 812		38.58 980	45.97 1160	48.54 1233	48.03 1220	50.39 1280	52.48 1333	54.53 1385	61.22 1555	63.58 1615	64.37 1653	71.65 1820	71.65 1820	76.57 1945	74.80 1900	78.74 2000																	
M	Inch mm	25.59 650		28.35 720	29.53 750	32.28 820	35.83 910	40.94 1040	46.46 1180	49.61 1260	50.70 1275	52.56 1335	57.84 1460	66.93 1700																					
N	Inch mm	25.62 650		24.80 630	25.98 660	28.74 730	32.68 830	37.40 950	42.13 1070	45.28 1150	47.24 1200	48.62 1235	53.15 1350	64.93 1650																					
P	Inch mm	11.81 300		11.81 300	11.81 300	11.81 300	15.53 395	15.53 395	16.41 422	16.42 417	16.42 417																								
Q	Inch mm	- -		- -	- -	- -	- -	47.56 1208	55.59 1412	55.91 1208	59.06 1500	57.68 1465	64.96 1650	42.52 1080	66.46 1688	74.80 1900	78.74 2000																		





# STAMTEC®

MECHANICAL PRESSES

Stamtec has been providing dependable, affordably priced metal stamping presses for almost 30 years in the North American market, and 60 years worldwide through our parent company Chin Fong. Our 72,000 sq. ft. sales, service, logistics, and assembly facility in Tennessee is home not only to North America's largest inventory of new presses and spare parts, but also our most important asset - our people. Our staff of engineering, sales, service, and support personnel are here to serve you in the most timely and professional manner. So, tap into our global strength, and grow with us as we grow with you!



**S2 SERIES**

STRAIGHT SIDE



**G2 SERIES**

2-POINT GAP



**DLS / iLS1**

INTELLIGENT LINK DRIVE  
SINGLE POINT SERVO DRIVE



**GTX SERIES**

STRAIGHT SIDE  
DOUBLE CRANK



**COIL FEEDING & HANDLING SYSTEMS**

# STAMTEC®

MECHANICAL PRESSES

U.S.A. - STAMTEC, INC.

4160 Hillsboro Highway | Manchester, TN 37355 U.S.A.

TEL: +1-931-393-5050 | FAX: +1-931-393-5060

URL: [www.stamtec.com](http://www.stamtec.com)

