

**Applications:**

- Designed for high pressure salt water applications:
  - Net cleaning
  - Salt water wash down

**SPECIFICATIONS**

Pump Model	HFN25A
Maximum Volume	19.44 GPM
Maximum Discharge Pressure	4060 PSI
Horsepower	53 HP
Maximum Pump Speed	1000 RPM
Maximum Inlet Pressure	45 PSI
Minimum Inlet	5 PSI
Plunger Bore	.984 in./25 mm
Plunger Stroke	1.969 in. / 50 mm
Crankcase Oil Capacity	128.5 oz.
Maximum Fluid Temperature	140° F
Inlet Port Thread	1" NPT
Discharge Port Thread	3/4" NPT
Shaft Diameter	1.574 in. / 40 mm
Weight	132 lbs.
Dimensions	20" x 14.5" x 9.4"

**FEATURES**

- High pressure plunger pump.
- Patent pending, symmetrical power end design featuring top and bottom mounting holes allowing for easy left to right shaft conversion.
- Patented "high-tech" low and high pressure seals
- New high performance aluminum alloy connecting rods and a floating wrist pin enable extra load at half the weight. This reduces vibrations and off center loads on the bearing for longer life and quieter operation.
- Splash lubrication.
- High volumetric efficiency suction/delivery valves featuring new spherical design of sealing areas.

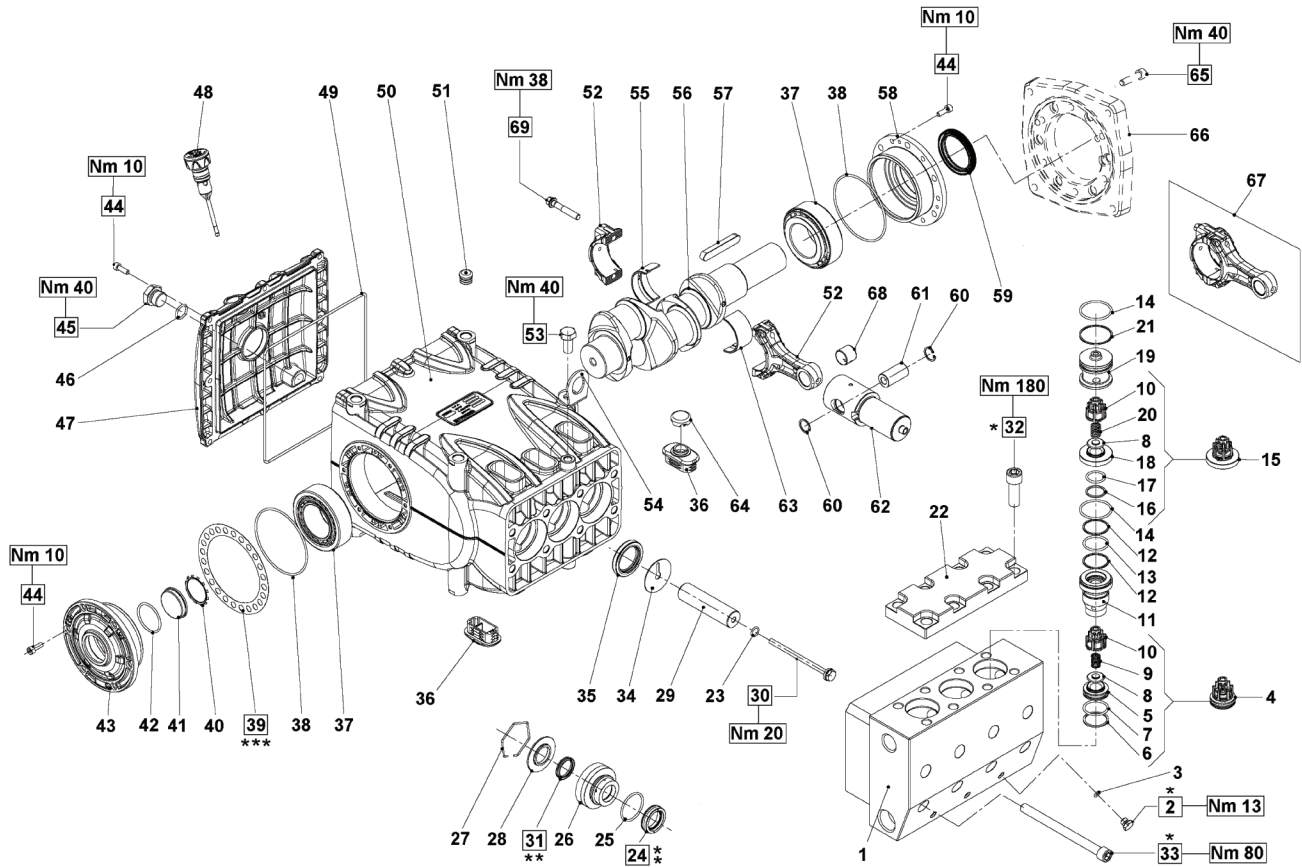
**MATERIALS**

- High resistance light alloy crankcase.
- Duplex 51 Stainless steel manifold
- Tapered roller rim bearings.
- Special antifriction light alloy connecting rods.
- Forged alloy steel crankshaft, hardened, tempered and nitrited.
- Cast iron piston guide, nickel treated.
- Solid ceramic plungers.
- 17-4 Stainless Steel valves.

General Pump is a  
member of the  
Interpump Group



## EXPLODED DRAWING

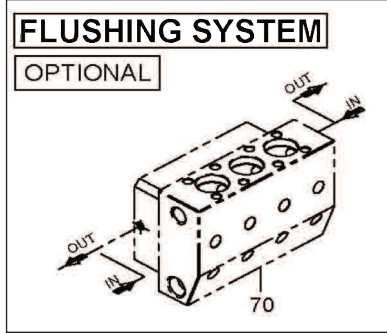


## PARTS LIST

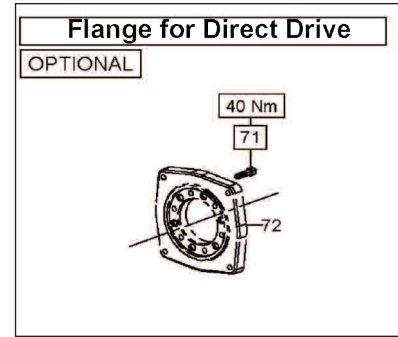
Item	Part Number	Description	QTY
1	F71128056	MANIFOLD Ø 25 NPT	1
2	F98197200	PLUG, G 1/8"X8	3
3	F90357600	O-RING Ø 6.75X1.78	3
4	F36718901	INLET VALVE UNIT	3
5	F36210566	INLET VALVE HOUSING	3
6	F90517700	RING, ANTIEXTRUSION, Ø 30X34X1.5	3
7	F90386600	O-RING Ø 29.82X2.62	3
8	F36209566	VALVE, BALL	6
9	F94739700	SPRING, Ø 11.4X20	3
10	F36210305	VALVE GUIDE	6
11	F71226356	VALVE BUSHING	3
12	F90517900	RING, ANTIEXTRUSION, Ø 31.4X35.5X1.5	6
13	F90386600	O-RING, Ø 29.82X2.62	3
14	F90387800	O-RING, Ø 39.34X2.62	6
15	F36718801	OUTLET VALVE UNIT	3
16	F90514500	RING, ANTIEXTRUSION, Ø 22.9X27X1.5	3
17	F90385100	O-RING, Ø 21.89X2.62	3
18	F36210466	OUTLET VALVE HOUSING	3
19	F71226466	PLUG, Ø 45	3
20	F94740100	SPRING, Ø 12X17	3
21	F90522000	RING, ANTIEXTRUSION, Ø 40.9X45X1.5	3
22	F21226256	VALVE COVER	1
23	F90367100	O-RING, Ø 11X2	3
24	F90237000	ALT. SEAL RING, HP, Ø 25X38X10	3
25	F90387500	O-RING, Ø 37.77X2.62	3
26	F71226166	SEAL SUPPORT, Ø 25	3
27	F90079700	SEAL RETAINER, Ø 52	3
28	F71226066	LP SEAL, Ø 52	3
29	F71040209	PLUNGER, Ø 25X95	3
30	F71223856	PLUNGER BOLT	3
31	F90236800	ALT. SEAL RING, LP, Ø 25X31.15	3
32	F99485000	SCREW, M14X40	8
33	F99448000	SCREW, 12X150	8
34	F96714000	WASHER, 10X50X1	3
35	F90167800	RADIAL RING, Ø 38X52X7	3
36	F71225851	PLUG CASING	6
37	F91859000	ROLLER BEARING	2
38	F90391800	O-RING, Ø 94.92X2.62	2

Item	Part Number	Description	QTY
39	F71220081	SPACER, 0.1 MM	-
	F71220381	SPACER, 0.25 MM	-
40	F90075600	RING, ZJ45	1
41	F70211801	OIL LEVEL INDICATOR	1
42	F90387700	O-RING, Ø 39.34X2.62	1
43	F71150122	OIL LEVEL INDICATOR, SIDE BEARING COVER	1
44	F99186700	SCREW, M6X18	20
45	F98218300	PLUG, G 1/2"X13, NICKEL	1
46	F90384100	O-RING, Ø 17.13X2.62	1
47	F71160022	BACK COVER CASING	1
48	F98212000	SHAFT PLUG	1
49	F90400000	O-RING, Ø 215X3	1
50	F71010022	PUMP CASING	1
51	F98206000	PLUG	4
53	F99512000	SCREW, M16X1.5X25	1
54	F71223074	LIFTING BRACKET	1
	F71924300	CONNECTING ROD SEMI-BUSH., LOWER	3
	F90924400	CONNECTING ROD SEMI-BUSH., +0.25, LOWER	3
	F90924500	CONNECTING ROD SEMI-BUSH., +0.50, LOWER	3
56	F70020035	CRANKSHAFT	1
57	F91500000	TAB, 12X8X70	1
58	F71150022	SIDE PTO COVER	1
59	F90170000	RADIAL RING, Ø 50X65X8	1
60	F90060600	SEGER RING, Ø 20	6
61	F94743000	SPINDLE, Ø 20X38	3
62	F71050015	PLUNGER GUIDE	3
	F90924000	CONNECTING ROD SEMI-BUSH., UPPER	3
	F90924100	CONNECTING ROD SEMI-BUSH., +0.25, UPPER	3
	F90924200	CONNECTING ROD SEMI-BUSH., +0.50, UPPER	3
64	F71225951	PLUG CASING COVER	3
67	F71030701	CONNECTING ROD ASSEMBLY	3
68	F90911000	CONNECTING ROD BUSHING	3
69	F99313800	CONNECTING ROD SCREW	6

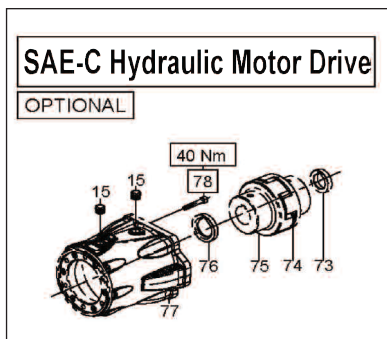
## OPTIONS



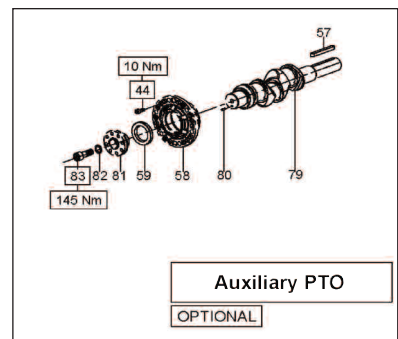
Item	Part Number	Description	QTY
70	F71128256	MANIFOLD, Ø 25, FLUSHING, NPT	1



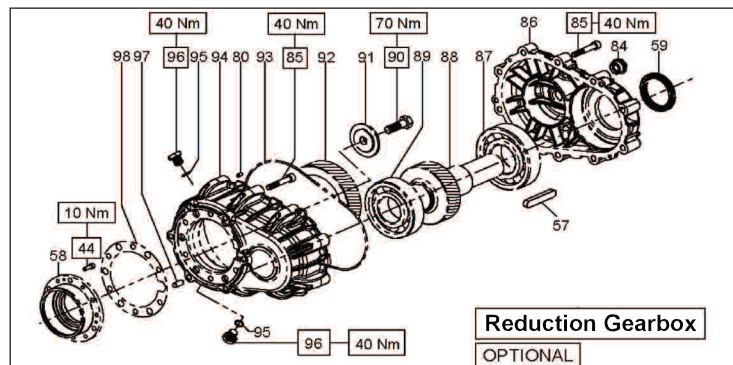
Item	Part Number	Description	QTY
71	F99309800	SCREW, M8X35	6
72	F10067720	HYDRAULIC MOTOR FLANGE	1



Item	Part Number	Description	QTY
15	F98206000	HOLE PLUG, Ø 15	2
73	F10074570	SPACER, Ø 31.75	1
74	F093734954	COUPLER INSERT	1
75	F10742801	CONNECTION, ELASTIC, Ø 40X31.75	1
76	F10074670	SPACER, Ø 40	1
77	F10075020	HYDRAULIC MOTOR FLANGE, SAE-C	1
78	F99314600	SCREW, M8X50	6

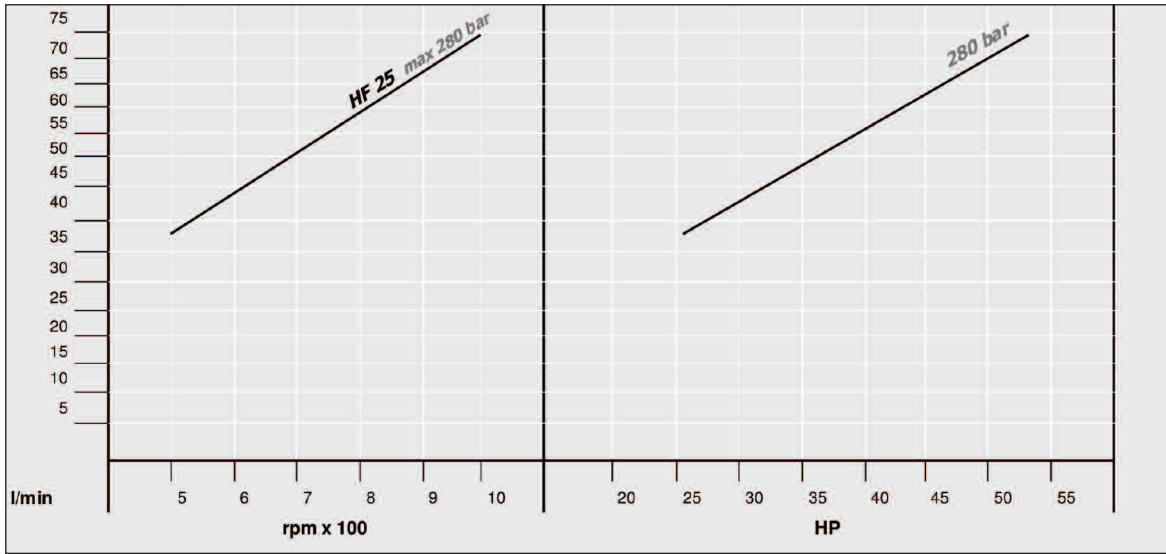


Item	Part Number	Description	QTY
44	F99186700	SCREW, M8X35	6
57	F91500000	TAB, 12X8X70	1
58	F71150022	PTO SIDE COVER	1
59	F90170000	RADIAL RING, Ø 50X65X8	1
79	F71020735	SHAFT	1
80	F97615200	PIN, Ø 5X10	1
81	F71226554	PTO HUB	1
82	F96737800	WASHER, Ø 17X24X1	1
83	F99514200	SCREW, M16X45	1

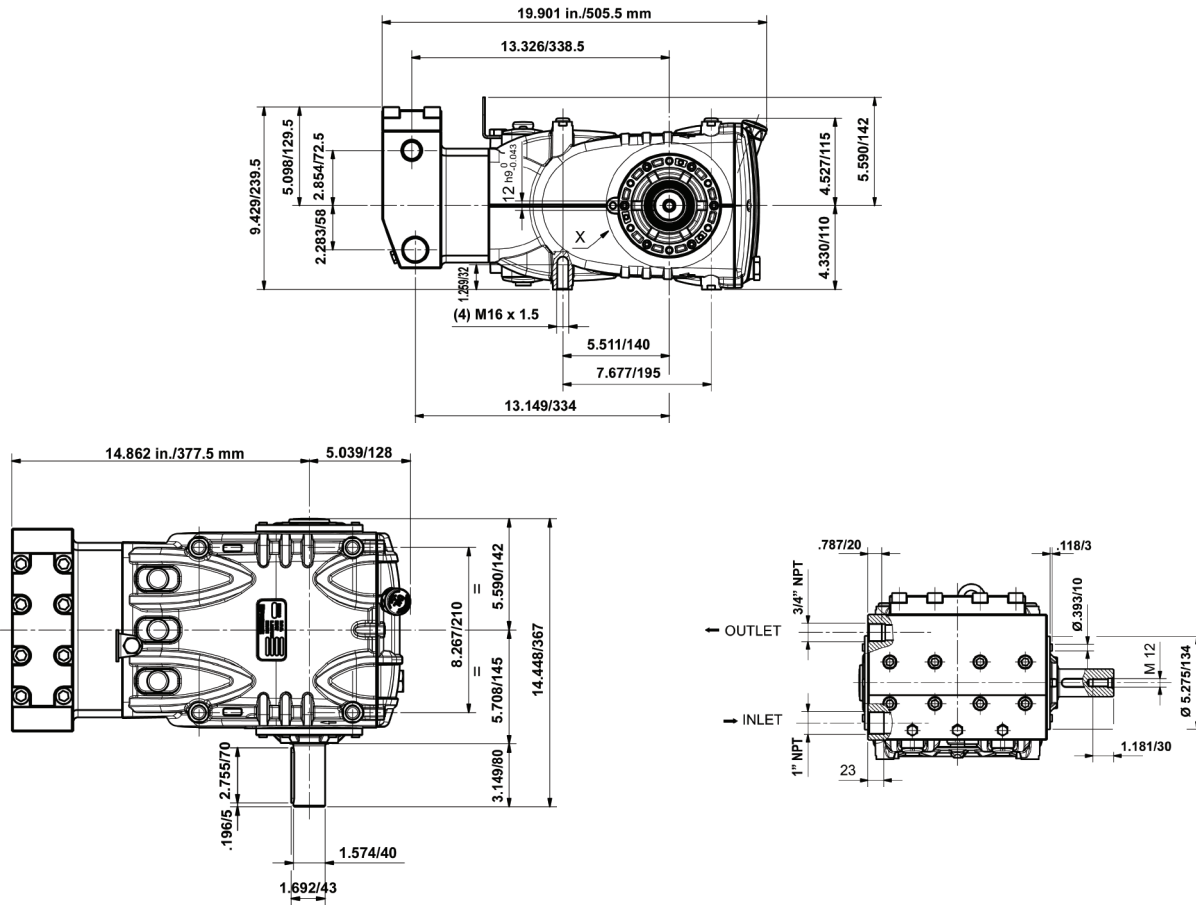


Item	Part Number	Description	QTY	Item	Part Number	Description	QTY
44	F99186700	SCREW, M6X18	6	89	F91857700	BEARING	1
57	F91500000	TAB, 12X8X70	1	90	F99430700	SCREW, M12X40	1
58	F71150022	PTO SIDE COVER	1	91	F72211055	GEAR WASHER	1
59	F90170000	RADIAL RING, Ø 50X65X8	1	92	F10071135	RING GEAR, Z34, R1.250, HELICAL	1
80	F97615200	PIN, Ø 5X10	1	93	F10071235	RING GEAR, Z37, R1.500 HELICAL	1
84	F97594000	OIL PLUG, 1/2"	1	94	F10071335	RING GEAR, Z40, R1.830, HELICAL	1
85	F99314600	SCREW, M8X50	16	95	F90394800	O-RING, Ø 209.22X2.62	1
86	F72210920	GEARBOX COVER	1	96	F72210820	REDUCTION GEARBOX	1
87	F91859300	BEARING	1	97	F90358500	O-RING, Ø 10.82X1.78	2
	F10070835	PINION, Z27 R1.250, HELICAL	1	98	F98204700	PLUG, G 1/4"X13, NICKEL	2
88	F10070935	PINION, Z25 R1.500, HELICAL	1		F97618500	PIN, Ø 8X18	1
	F10071035	PINION, Z22 R1.8300, HELICAL	1		F72210784	SEAL, GEARBOX	1

## PERFORMANCE CURVE



## DIMENSIONAL DRAWINGS



Ref 300794 Rev. B  
06-11