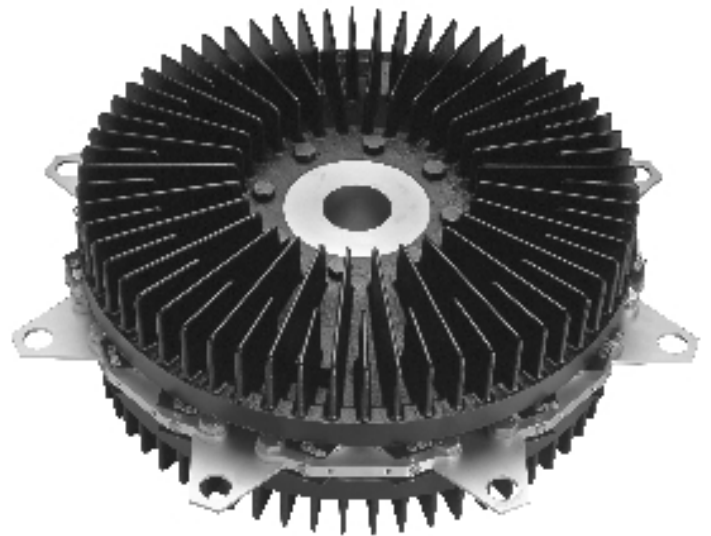


3000 SERIES

The **3000 Series Dual Disk Brake**, named for its **thirty inch** diameter disks, offers high performance in a torque range from **60 lb-inches up to 51,030 lb-inches**.

The 3000 Series Brake delivers the precise torque range needed for a particular application by allocating actuation of just the number of cylinders needed, from **one up to sixteen**.



OPTIONS

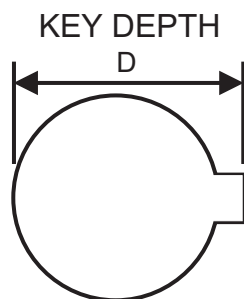
- **Metric Mounting Bolt (MMB).** Metric mounting bolts for the actuators.
- **Non-Standard Key (NSK).** For shafts having a different sized key other than the standardized ones usually used.
- **Reduced Area Piston (RA).** Reduces torque produced to 31% of normal.

ACCESSORIES

- **Mounting Plate** - Flat plate for mounting the brake and guard if used.
- **Guard** - Safety device to prevent people or objects from touching brake when in motion or hot.
- **Guard Blocks** - Flat plate for mounting the brake and guard if used.
- **Valve Assembly** - Controls air supply for actuators.

SPECIFICATIONS:

Disk/Hub Inertia	3,000 Slug-in ²
Max. Torque	51,030 in-lbs
Disk/Hub Weight	850 lbs.
Max. Ship Wt.	1,230 lbs.
Min. Shaft Length	17.0 in.

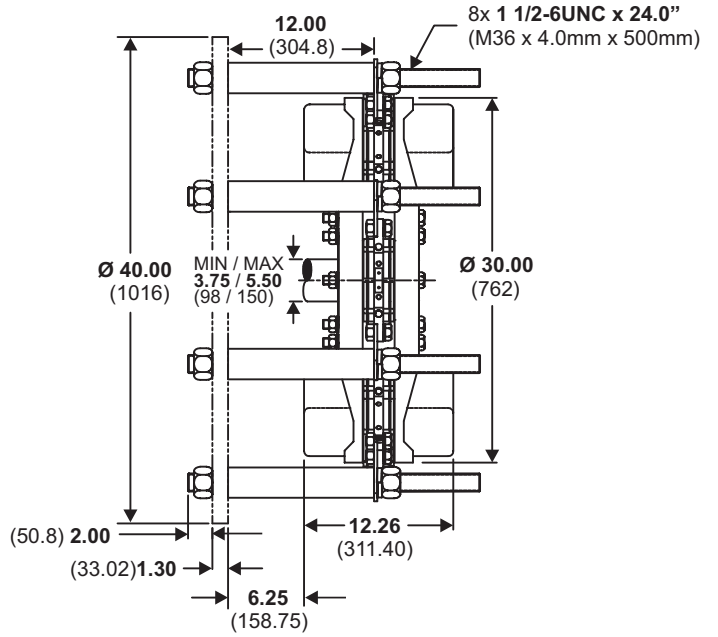
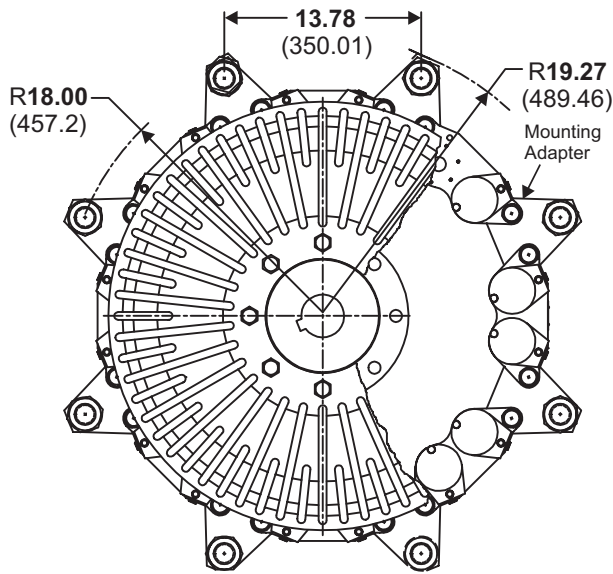


TORQUE CAPACITY, LB-IN (N-M)				
Torque Capacity at 75psi (5.17 bar)				
BRAKE SIZE		PAD COEFFICIENT OF FRICTION		
SERIES	# OF CYLINDERS	0.10 (#1) LB-IN (N-M)	0.20 (#2) LB-IN (N-M)	0.45 (#4) LB-IN (N-M)
3000	1	710 (80)	1420 (160)	3190 (360)
	2	1420 (160)	2840 (321)	6380 (721)
	3	2120 (240)	4260 (482)	9540 (1078)
	4	2840 (321)	5670 (641)	12780 (1444)
	5	3550 (401)	7090 (801)	15930 (1800)
	6	4260 (481)	8510 (962)	19170 (2166)
	7	4960 (560)	9900 (1119)	22320 (2522)
	8	5670 (641)	11340 (1281)	25560 (2888)
	9	6380 (721)	12780 (1444)	28710 (3244)
	10	7090 (801)	14220 (1607)	31860 (3600)
	11	7790 (880)	15570 (1759)	35100 (3966)
	12	8510 (962)	17010 (1922)	38250 (4321)
	13	9180 (1037)	18450 (2084)	41490 (4688)
	14	9900 (1119)	19890 (2247)	44640 (5043)
	15	10620 (1200)	21240 (2400)	47880 (5409)
	16	11340 (1281)	22680 (2562)	51030 (5765)

STANDARD HUB BORE AND KEY DIMENSIONS						
	ENGLISH			METRIC		
	BORE	KEY	DEPTH (D)	BORE	KEY	DEPTH (D)
3000 S E R I E S	3.750	7/8	4.141	98	28	104.4
	3.813	1	4.251	100	28	106.4
	3.875	1	4.314	102	28	108.4
	3.938	1	4.378	105	28	111.4
	4.000	1	4.441	108	28	114.4
	4.188	1	4.632	110	28	116.4
	4.250	1	4.695	115	32	122.4
	4.375	1	4.822	120	32	127.4
	4.438	1	4.885	125	32	132.4
	4.500	1	4.949	130	32	137.4
	4.750	1 1/4	5.296	135	36	143.4
	4.875	1 1/4	5.424	140	36	148.4
	4.938	1 1/4	5.487	145	36	153.4
	5.000	1 1/4	5.551	150	36	158.4
	5.188	1 1/4	5.741			
	5.230	1 1/4	5.805			
5.438	1 1/4	5.995				
5.500	1 1/4	6.058				

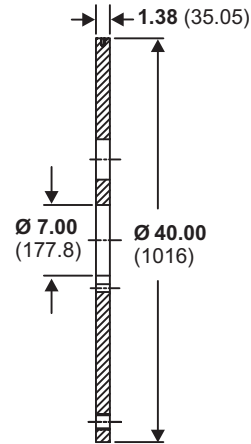
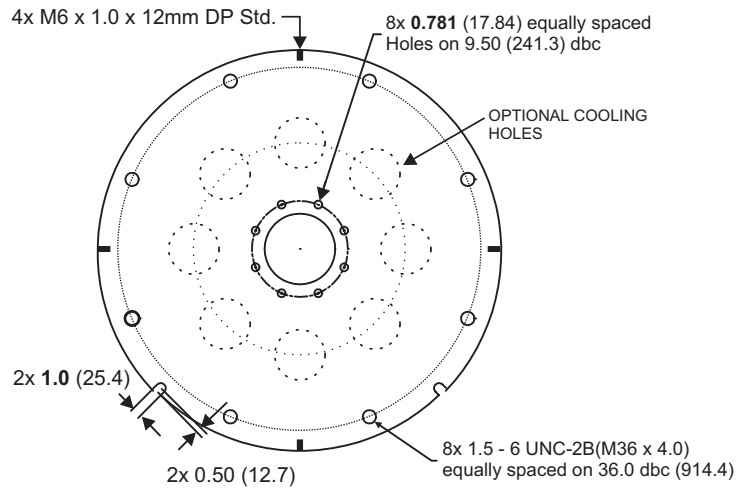
3000 SERIES DIMENSIONS (Model 3016 shown)

inches (mm)



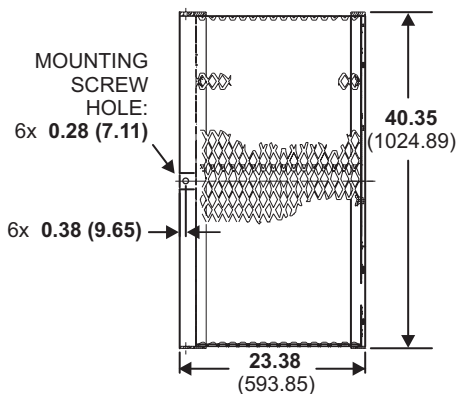
MOUNTING PLATE DIMENSIONS (Accessories)

inches (mm)



BRAKE GUARD DIMENSIONS (Accessories)

inches (mm)



THRU-SHAFT HOLE 5.00 (127) Diam. REQUIRES REMOVAL OF NAME PLATE

