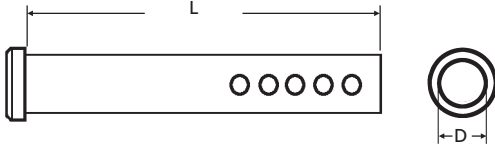


CUT TO LENGTH!



BOX 232 • MINNEAPOLIS, KS • 67467



ADJUSTABLE

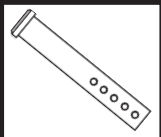
MANUFACTURER CROSS-REFERENCE

ITW/Bee-Leitzke

13

Pivot Point

ADJ



CLPU	Nominal (D)	Overall Length (L)	Shank Diameter Min / Max	Hole Diameter (with 1/4" spacing)	Number of Holes	WEIGHT Lbs. per 100 Pieces	MATERIALS			Use With
	DIAMETER	LENGTH					Plain "CLPU-"	Zinc Clear "CLPUZ-"	Zinc Yellow "CLPUY-"	
-0187-1500	3/16	1-1/2	.181 / .186	3/32	5	1.30				BP-223
-0187-2000		2			5	1.70				
-0250-1000	1/4	1	.243 / .248	7/64	3	1.70				
-0250-1500		1-1/2			5	2.30				
-0250-2000		2			6	3.00				
-0250-2500		2-1/2			7	3.70				
-0250-3000	3	7	4.50							
-0312-1000	5/16	1	.306 / .311	7/64	3	2.45				
-0312-1500		1-1/2			4	3.50				
-0312-2000		2			6	4.80				
-0312-2500		2-1/2			7	5.75				
-0312-3000	3	7	6.85							
-0375-1500	3/8	1-1/2	.368 / .373	9/64	4	5.25				
-0375-2000		2			6	6.75				
-0375-2500		2-1/2			7	8.25				
-0375-3000		3			7	9.75				
-0375-4000	4	7	12.75							
-0437-2000	7/16	2	.431 / .436	5/32	6	9.25				
-0437-2500		2-1/2			7	11.25				
-0437-3000		3			7	13.00				
-0437-4000		4			7	17.00				
-0500-2000	1/2	2	.491 / .496	5/32	6	12.00				
-0500-2500		2-1/2			7	14.75				
-0500-3000		3			7	17.25				
-0500-4000		4			7	22.50				
-0562-4000	9/16	4	.553 / .558	5/32	7	33.00				
-0625-2000	5/8	2	.616 / .621	5/32	6	20.00				
-0625-3000		3			7	28.10				
-0625-4000		4			7	35.60				
-0750-3000	3/4	3	.741 / .746	5/32	7	42.00				
-0750-4000		4			7	53.74				

BRIDGE PINS BEGIN PAGE 72.

DESCRIPTION	GENERAL USE	HOW TO IDENTIFY	APPLICATION
<p>CLPU</p> <p>Adjustable clevis pins are drilled with multiple holes. The excess holes can be cut off after installation. These pins are extremely versatile and are usually used as a replacement part.</p> <p>ADJUSTABLE</p>	<p>COMMON</p>	<ol style="list-style-type: none"> 1. Verify flat head pin with multiple holes drilled at the opposite end. 2. Measure diameter (D). 3. Measure length (L). 4. Find the part in the chart above. <p>TYPICAL PART NUMBER SEQUENCE: CLPU-0187-1500 is a 3/16" x 1-1/2" plain adjustable clevis pin.</p>	<p>Cut to length!</p>

PERFORMANCE RESULTS VARY. YOUR PIN SELECTION SHOULD BE MADE BASED ON INDIVIDUAL APPLICATION.



MOST SIZES AVAILABLE IMMEDIATELY • \$2 LINE REQUESTED • CALL PLANT FOR QUANTITY DISCOUNTS

All manufacturer names and numbers are for identification purposes only. In no way are we implying that our parts were made by the manufacturers listed above. Prices, materials, tolerances, and grades subject to change without notice.