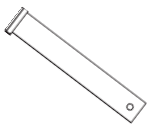
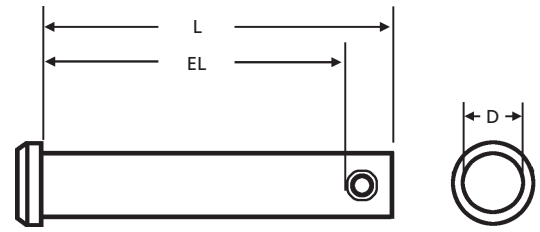


CLEVIS PINS

785-392-3017 FAX 785.392.2845

REVISED 08-03

FOR NONFERROUS, SEE PAGE 12.



CORNPICKER

MANUFACTURER CROSS-REFERENCE

ITW/Bee-Leitzke	11	Pivot Point	CP
See also	MS20392		

CLP	Nominal (D)	Length (L)	Effective Length (EL)	WEIGHT Lbs. per 100 Pieces	MATERIALS			Use With 	
	DIAMETER	LENGTH			Plain "CLP-"	Zinc Clear "CLPZ-"	Zinc Yellow "CLPY-"		
-0187-0500	3/16	1/2	.359	.181/.186				BP-223	
-0187-0593		19/32	.453						0.59
-0187-0625		5/8	.484						0.62
-0187-0750		3/4	.609						0.69
-0187-0875		7/8	.734						0.81
-0187-1000		1	.859						0.88
-0187-1250		1-1/4	1.109						1.06
-0187-1500		1-1/2	1.359						1.31
-0187-1750		1-3/4	1.609						1.50
-0187-2000		2	1.859						1.69
-0187-2500	2-1/2	2.359	2.06	+ .020/- .000				BP-213	
-0187-3000	3	2.859	2.50						
-0250-0500	1/2	.359	0.94						
-0250-0625	5/8	.484	1.13						
-0250-0750	3/4	.609	1.38						
-0250-0796	51/64	.656	1.44						
-0250-0875	7/8	.734	1.50						
-0250-1000	1	.859	1.69						
-0250-1125	1-1/8	.984	1.81						
-0250-1250	1-1/4	1.109	2.00						
-0250-1375	1-3/8	1.234	2.19						
-0250-1500	1-1/2	1.359	2.31						
-0250-1625	1-5/8	1.484	2.50						
-0250-1750	1-3/4	1.609	2.69						
-0250-1875	1-7/8	1.734	2.81						
-0250-2000	2	1.859	3.00						
-0250-2125	2-1/8	1.984	3.19						
-0250-2250	2-1/4	2.109	3.31						
-0250-2375	2-3/8	2.234	3.50						
-0250-2437	2-7/16	2.296	3.63						
-0250-2500	2-1/2	2.359	3.69						
-0250-2625	2-5/8	2.484	3.80						
-0250-2750	2-3/4	2.609	4.00						
-0250-3000	3	2.859	4.50						
-0250-3250	3-1/4	3.109	4.75						
-0250-3500	3-1/2	3.359	5.00						
-0250-4000	4	3.859	5.88						
-0250-5000	5	4.859	7.00						

BRIDGE PINS BEGIN PAGE 72.

DESCRIPTION	GENERAL USE	HOW TO IDENTIFY	APPLICATION
<p>CLP</p> <p>Solid pin with standard flat head that secures with a wire formed pin through a hole drilled in the opposite end. Clevis pins are used as a quick and secure fastener in place of bolts and rivets.</p> <p>CORNPICKER</p>	<p>COMMON</p>	<ol style="list-style-type: none"> 1. Verify flat head pin with hole at opposite end. 2. Measure diameter (D). 3. Confirm effective length (EL) and length (L). 4. Find the part in the chart above. <p>TYPICAL PART NUMBER SEQUENCE: CLPZ-0187-0750 is a 3/16" x 3/4" zinc clear clevis pin.</p>	<p>Secured with a ring cotter pin.</p>

PERFORMANCE RESULTS VARY. YOUR PIN SELECTION SHOULD BE MADE BASED ON INDIVIDUAL APPLICATION.

Use With

Page 54	Page 72	Page 88	Page 95	Page 95	Page 94
---------	---------	---------	---------	---------	---------

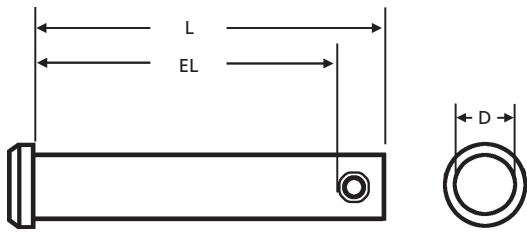
ADDITIONAL TECHNICAL DATA ON PAGE 21.

CLPM **METRIC** Page 186

MOST SIZES AVAILABLE IMMEDIATELY • \$2 LINE REQUESTED • CALL PLANT FOR QUANTITY DISCOUNTS

FOR NONFERROUS, SEE PAGE 12.

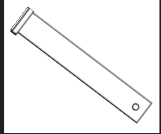
BOX 232 • MINNEAPOLIS, KS • 67467



CORNPICKER

MANUFACTURER CROSS-REFERENCE

ITW/Bee-Leitzke	11	Pivot Point	CP
See also	MS20392		



CLP	Nominal (D)	Length (L)	Effective Length (EL)	WEIGHT Lbs. per 100 Pieces	MATERIALS			Use With
	DIAMETER	LENGTH			Plain "CLP-"	Zinc Clear "CLPZ-"	Zinc Yellow "CLPY-"	
-0312-0500	5/16	1/2	.281	+ .020/- .000				BP-213
-0312-0750		3/4	.531					
-0312-0875		7/8	.656					
-0312-0968		31/32	.750					
-0312-1000		1	.781					
-0312-1125		1-1/8	.906					
-0312-1187		1-3/16	.968					
-0312-1250		1-1/4	1.031					
-0312-1375		1-3/8	1.156					
-0312-1500		1-1/2	1.281					
-0312-1625		1-5/8	1.406					
-0312-1687		1-11/16	1.468					
-0312-1750		1-3/4	1.531					
-0312-1812		1-13/16	1.593					
-0312-1875		1-7/8	1.656					
-0312-1937		1-15/16	1.718					
-0312-2000		2	1.781					
-0312-2125		2-1/8	1.906					
-0312-2187		2-3/16	1.968					
-0312-2250		2-1/4	2.031					
-0312-2375		2-3/8	2.156					
-0312-2500		2-1/2	2.281					
-0312-2625		2-5/8	2.406					
-0312-2750		2-3/4	2.531					
-0312-2812		2-13/16	2.593					
-0312-2875		2-7/8	2.656					
-0312-3000		3	2.781					
-0312-3125		3-1/8	2.906					
-0312-3250		3-1/4	3.031					
-0312-3500		3-1/2	3.281					
-0312-3750		3-3/4	3.531					
-0312-4000		4	3.781					
-0312-6000		6	5.781					
-0375-0750		3/8	3/4					
-0375-1000	1		.765					
-0375-1093	1-3/32		.859					
-0375-1125	1-1/8		.890					
-0375-1250	1-1/4		1.015					
-0375-1312	1-5/16		1.078					

BRIDGE PINS BEGIN PAGE 72.

DESCRIPTION	GENERAL USE	HOW TO IDENTIFY	APPLICATION
<p>CLP</p> <p>Solid pin with standard flat head that secures with a wire formed pin through a hole drilled in the opposite end. Clevis pins are used as a quick and secure fastener in place of bolts and rivets.</p> <p>CORNPICKER</p>	<p>COMMON</p>	<ol style="list-style-type: none"> Verify flat head pin with hole at opposite end. Measure diameter (D). Confirm effective length (EL) and length (L). Find the part in the chart above. <p>TYPICAL PART NUMBER SEQUENCE: CLPZ-0187-0750 is a 3/16" x 3/4" zinc clear clevis pin.</p>	<p>Hook connector.</p>

PERFORMANCE RESULTS VARY. YOUR PIN SELECTION SHOULD BE MADE BASED ON INDIVIDUAL APPLICATION.

Use With

Page 54	Page 72	Page 88	Page 95	Page 95	Page 94
---------	---------	---------	---------	---------	---------

ASSORTMENTS BEGIN

Page 286

CLPM METRIC Page 186

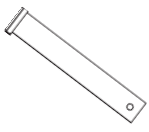
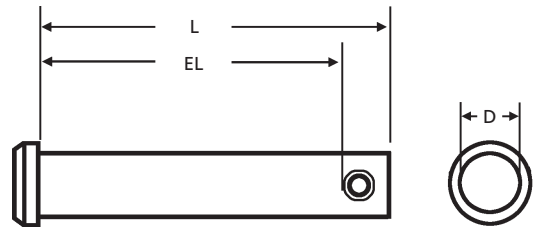
MOST SIZES AVAILABLE IMMEDIATELY • \$2 LINE REQUESTED • CALL PLANT FOR QUANTITY DISCOUNTS

CLEVIS PINS

785-392-3017 FAX 785.392.2845

REVISED 08-03


FOR NONFERROUS, SEE PAGE 12.




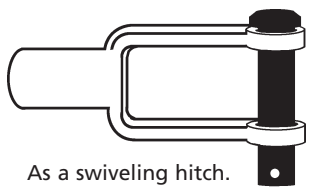
CORNPICKER

MANUFACTURER CROSS-REFERENCE

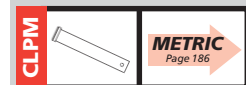
ITW/Bee-Leitzke	11	Pivot Point	CP
See also	MS20392		

CLP	Nominal (D)	Length (L)	Effective Length (EL)	WEIGHT Lbs. per 100 Pieces	MATERIALS			Use With 
	DIAMETER	LENGTH			Plain "CLP-"	Zinc Clear "CLPZ-"	Zinc Yellow "CLPY-"	
-0375-1375	3/8 .3681/.373	1-3/8	1.140	+ .020/- .000				BP-213
-0375-1500		1-1/2	1.265					
-0375-1625		1-5/8	1.390					
-0375-1750		1-3/4	1.515					
-0375-1875		1-7/8	1.640					
-0375-2000		2	1.765					
-0375-2125		2-1/8	1.890					
-0375-2250		2-1/4	2.015					
-0375-2359		2-23/64	2.125					
-0375-2375		2-3/8	2.140					
-0375-2500		2-1/2	2.265					
-0375-2625		2-5/8	2.390					
-0375-2750		2-3/4	2.515					
-0375-3000		3	2.765					
-0375-3250		3-1/4	3.015					
-0375-3500		3-1/2	3.265					
-0375-3750		3-3/4	3.515					
-0375-4000		4	3.765					
-0375-4500		4-1/2	4.265					
-0375-5000		5	4.765					
-0375-5500	5-1/2	5.265						
-0375-6125	6-1/8	5.890						
-0437-1000	7/16 .431/.436	1	.765					BP-211
-0437-1234		1-15/64	1.000					
-0437-1250		1-1/4	1.015					
-0437-1500		1-1/2	1.265					
-0437-1625		1-5/8	1.390					
-0437-1750		1-3/4	1.515					
-0437-2000		2	1.765					
-0437-2250		2-1/4	2.015					
-0437-2375		2-3/8	2.140					
-0437-2500		2-1/2	2.265					
-0437-2625		2-5/8	2.390					
-0437-2750		2-3/4	2.515					
-0437-3000		3	2.765					
-0437-3500		3-1/2	3.265					
-0437-4000		4	3.765					

BRIDGE PINS BEGIN PAGE 72.

DESCRIPTION	GENERAL USE	HOW TO IDENTIFY	APPLICATION
<p>CLP</p> <p>Solid pin with standard flat head that secures with a wire formed pin through a hole drilled in the opposite end. Clevis pins are used as a quick and secure fastener in place of bolts and rivets.</p> <p>CORNPICKER</p>	 <p>COMMON</p>	<ol style="list-style-type: none"> 1. Verify flat head pin with hole at opposite end. 2. Measure diameter (D). 3. Confirm effective length (EL) and length (L). 4. Find the part in the chart above. <p>TYPICAL PART NUMBER SEQUENCE: CLPZ-0187-0750 <i>is a 3/16" x 3/4" zinc clear clevis pin.</i></p>	 <p>As a swiveling hitch.</p>

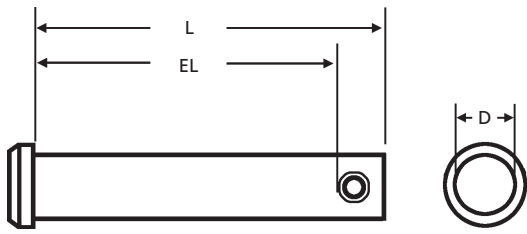
PERFORMANCE RESULTS VARY. YOUR PIN SELECTION SHOULD BE MADE BASED ON INDIVIDUAL APPLICATION.



MOST SIZES AVAILABLE IMMEDIATELY • \$2 LINE REQUESTED • CALL PLANT FOR QUANTITY DISCOUNTS

FOR NONFERROUS, SEE PAGE 12.

BOX 232 • MINNEAPOLIS, KS • 67467



CORNPICKER			
MANUFACTURER CROSS-REFERENCE			
ITW/Bee-Leitzke	11	Pivot Point	CP
See also	MS20392		

CLP	Nominal (D)	Length (L)	Effective Length (EL)	WEIGHT Lbs. per 100 Pieces	MATERIALS			Use With
	DIAMETER	LENGTH			Plain "CLP-"	Zinc Clear "CLPZ-"	Zinc Yellow "CLPY-"	
-0500-1000	1/2 .491/.496	1	.765	6.75				BP-211
-0500-1250		1-1/4	1.015	8.00				
-0500-1375		1-3/8	1.140	8.68				
-0500-1421		1-27/64	1.187	9.00				
-0500-1500		1-1/2	1.265	9.50				
-0500-1750		1-3/4	1.515	10.75				
-0500-2000		2	1.765	12.00				
-0500-2250		2-1/4	2.015	13.25				
-0500-2500		2-1/2	2.265	14.75				
-0500-2625		2-5/8	2.390	15.25				
-0500-2750		2-3/4	2.515	16.00				
-0500-3000		3	2.765	17.25				
-0500-3500		3-1/2	3.265	20.00				
-0500-4000		4	3.765	22.50				
-0500-4500		4-1/2	4.265	25.25				
-0500-5000	5	4.765	28.00					
-0500-6000	6	5.765	33.75					
-0562-2000	9/16 .553/.558	2	1.765	15.63				BP-211
-0562-2500		2-1/2	2.265	19.38				
-0562-3000		3	2.765	22.50				
-0562-4000		4	3.765	29.37				
-0625-1250	5/8 .616/.621	1-1/4	1.015	13.75				BP-211
-0625-1500		1-1/2	1.265	16.00				
-0625-1750		1-3/4	1.515	18.13				
-0625-2000		2	1.765	20.00				
-0625-2250		2-1/4	2.015	23.75				
-0625-2500		2-1/2	2.265	24.38				
-0625-3000		3	2.765	28.13				
-0625-3500		3-1/2	3.265	32.50				
-0625-4000		4	3.765	35.63				
-0625-4500		4-1/2	4.265	40.42				
-0625-5000		5	4.765	45.21				
-0625-5500	5-1/2	5.265	50.00					
-0625-6000	6	5.765	52.50					
-0750-2000	3/4 .741/.746	2	1.765	28.75				BP-211
-0750-2500		2-1/2	2.265	35.00				
-0750-2750		2-3/4	2.515	38.13				
-0750-3000		3	2.765	42.00				
-0750-3500		3-1/2	3.265	47.50				

BRIDGE PINS BEGIN PAGE 72.

CLP	DESCRIPTION	GENERAL USE	HOW TO IDENTIFY	APPLICATION
	Solid pin with standard flat head that secures with a wire formed pin through a hole drilled in the opposite end. Clevis pins are used as a quick and secure fastener in place of bolts and rivets.	COMMON	<ol style="list-style-type: none"> Verify flat head pin with hole at opposite end. Measure diameter (D). Confirm effective length (EL) and length (L). Find the part in the chart above. <p>TYPICAL PART NUMBER SEQUENCE: CLPZ-0187-0750 is a 3/16" x 3/4" zinc clear clevis pin.</p>	Secures a spring.

PERFORMANCE RESULTS VARY. YOUR PIN SELECTION SHOULD BE MADE BASED ON INDIVIDUAL APPLICATION.



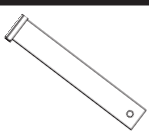
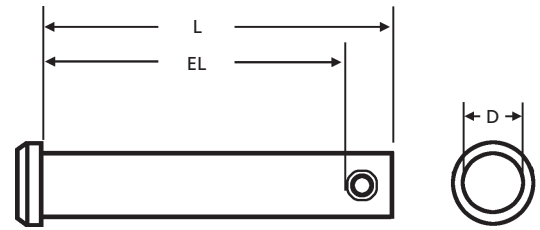
MOST SIZES AVAILABLE IMMEDIATELY • \$2 LINE REQUESTED • CALL PLANT FOR QUANTITY DISCOUNTS

CLEVIS PINS

785-392-3017 FAX 785.392.2845

REVISED 08-03


FOR NONFERROUS, SEE PAGE 12.




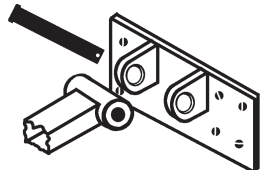
CORNPICKER

MANUFACTURER CROSS-REFERENCE

ITW/Bee-Leitzke	11	Pivot Point	CP
See also	MS20392		







CLP	Nominal (D)		Length (L)	Effective Length (EL)	WEIGHT Lbs. per 100 Pieces	MATERIALS			Use With 						
	DIAMETER	LENGTH				Plain "CLP-"	Zinc Clear "CLPZ-"	Zinc Yellow "CLPY-"							
-0750-3750	3/4	.741/.746	3-3/4	3.515	50.63				BP-211						
-0750-4000			4	3.765	53.75										
-0750-4500			4-1/2	4.265	60.00										
-0750-5000			5	4.765	65.25										
-0750-5500			5-1/2	5.265	72.65										
-0750-6000			6	5.765	78.80										
-0750-6500	6-1/2	6.265	85.00												
-0875-2000	7/8	.866/.871	2	1.703	38.13							BP-210			
-0875-2500			2-1/2	2.203	47.50										
-0875-2750			2-3/4	2.453	52.50										
-0875-3000			3	2.703	55.25										
-0875-3500			3-1/2	3.203	65.63										
-0875-4000			4	3.703	73.75										
-0875-4500	4-1/2	4.203	82.13												
-0875-5000	5	4.703	90.50												
-0875-6000	6	5.703	105.25												
-1000-2000	1	.991/.996	2	1.703	53.00										BP-210
-1000-2250			2-1/4	1.953	58.75										
-1000-2500			2-1/2	2.203	63.00										
-1000-2625			2-5/8	2.312	67.50										
-1000-2750			2-3/4	2.453	70.00										
-1000-3000			3	2.703	75.63										
-1000-3250			3-1/4	2.953	81.00										
-1000-3500			3-1/2	3.203	86.88										
-1000-4000			4	3.703	97.50										
-1000-4500			4-1/2	4.203	108.12										
-1000-5000			5	4.703	119.69										
-1000-5500			5-1/2	5.203	130.78										
-1000-6000	6	5.703	141.88												
-1000-7000	7	6.703	165.35												
-1000-8000	8	7.703	188.82												
-1000-9000	9	8.703	212.31												
-1125-3000	1-1/8	1.105/1.125	3	2.375	100.00				BP-208						
-1125-4000			4	3.375	130.00										
-1125-5000			5	4.375	160.00										
-1125-6000			6	5.375	190.00										
-1125-8000			8	7.375	250.00										
-1125-9000	9	8.375	280.00												

BRIDGE PINS BEGIN PAGE 72.

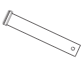
DESCRIPTION	GENERAL USE	HOW TO IDENTIFY	APPLICATION
<p>CLP</p> <p>Solid pin with standard flat head that secures with a wire formed pin through a hole drilled in the opposite end. Clevis pins are used as a quick and secure fastener in place of bolts and rivets.</p> <p>CORNPICKER</p>	 <p>COMMON</p>	<ol style="list-style-type: none"> Verify flat head pin with hole at opposite end. Measure diameter (D). Confirm effective length (EL) and length (L). Find the part in the chart above. <p>TYPICAL PART NUMBER SEQUENCE: CLPZ-0187-0750 <i>is a 3/16" x 3/4" zinc clear clevis pin.</i></p>	 <p>Connect a tow bar.</p>

PERFORMANCE RESULTS VARY. YOUR PIN SELECTION SHOULD BE MADE BASED ON INDIVIDUAL APPLICATION.

Use With

 Page 54	 Page 72	 Page 88	 Page 95	 Page 95	 Page 94
--	---	---	---	---	---

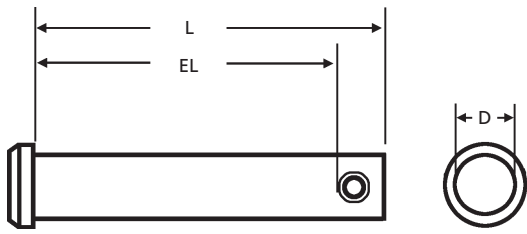
 **ADDITIONAL TECHNICAL DATA ON PAGE 21.**

CLPM  **METRIC** Page 186

MOST SIZES AVAILABLE IMMEDIATELY • \$2 LINE REQUESTED • CALL PLANT FOR QUANTITY DISCOUNTS

FOR NONFERROUS, SEE PAGE 12.

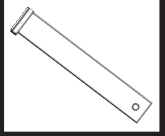
BOX 232 • MINNEAPOLIS, KS • 67467



CORNPICKER

MANUFACTURER CROSS-REFERENCE

ITW/Bee-Leitzke	11	Pivot Point	CP
See also	MS20392		



CLP	Nominal (D)	Length (L)	Effective Length (EL)	WEIGHT Lbs. per 100 Pieces	MATERIALS			Use With
	DIAMETER	LENGTH			Plain "CLP-"	Zinc Clear "CLPZ-"	Zinc Yellow "CLPY-"	
-1250-3000	1-1/4	1.230/1.250	3	2.375	118.00			BP-208
-1250-4000			4	3.375	158.00			
-1250-5000			5	4.375	198.00			
-1250-6000			6	5.375	238.00			
-1250-8000			8	7.375	318.00			
-1250-9000			9	8.375	358.00			
-1375-3000	1-3/8	1.355/1.375	3	2.375	175.00			BP-235
-1375-4000			4	3.375	225.00			
-1375-5000			5	4.375	275.00			
-1375-6000			6	5.375	325.00			
-1375-9000			9	8.375	450.00			
-1500-3000	1-1/2	1.480/1.500	3	2.375	200.00			BP-235
-1500-4000			4	3.375	250.00			
-1500-5000			5	4.375	300.00			
-1500-6000			6	5.375	350.00			
-1500-9000			9	8.375	500.00			
-1625-3000	1-5/8	1.605/1.625	3	2.375	240.00			CP-0250-2250
-1625-4000			4	3.375	300.00			
-1625-5000			5	4.375	360.00			
-1625-6000			6	5.375	420.00			
-1625-9000			9	8.375	600.00			
-1750-3000	1-3/4	1.730/1.750	3	2.375	285.00			CP-0250-2500
-1750-4000			4	3.375	365.00			
-1750-5000			5	4.375	435.00			
-1750-6000			6	5.375	505.00			
-1750-9000			9	8.375	715.00			
-1875-3000	1-7/8	1.855/1.875	3	2.375	280.00			CP-0250-2500
-1875-4000			4	3.375	360.00			
-1875-5000			5	4.375	430.00			
-1875-6000			6	5.375	500.00			
-1875-9000			9	8.375	710.00			
-2000-3000	2	1.980/2.000	3	2.375	360.00			CP-0250-3000
-2000-4000			4	3.375	460.00			
-2000-5000			5	4.375	550.00			
-2000-6000			6	5.375	640.00			
-2000-9000			9	8.375	910.00			

+ .020/- .000

BRIDGE PINS BEGIN PAGE 72, COTTER PINS BEGIN PAGE 54.

CLP	DESCRIPTION	GENERAL USE	HOW TO IDENTIFY	APPLICATION
	Solid pin with standard flat head that secures with a wire formed pin through a hole drilled in the opposite end. Clevis pins are used as a quick and secure fastener in place of bolts and rivets.	COMMON	<ol style="list-style-type: none"> Verify flat head pin with hole at opposite end. Measure diameter (D). Confirm effective length (EL) and length (L). Find the part in the chart above. <p>TYPICAL PART NUMBER SEQUENCE: CLPZ-0187-0750 is a 3/16" x 3/4" zinc clevis pin.</p>	 As a positioning point.

PERFORMANCE RESULTS VARY. YOUR PIN SELECTION SHOULD BE MADE BASED ON INDIVIDUAL APPLICATION.

Page 54	Page 72	Page 88	Page 95	Page 95	Page 94
---------	---------	---------	---------	---------	---------

ASSORTMENTS BEGIN

Page 286

CLPM **METRIC** Page 186

MOST SIZES AVAILABLE IMMEDIATELY • \$2 LINE REQUESTED • CALL PLANT FOR QUANTITY DISCOUNTS