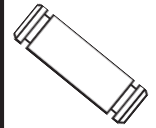
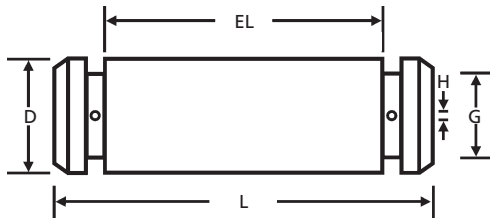


**CROOVED HEADLESS**  
**MANUFACTURER CROSS-REFERENCE**



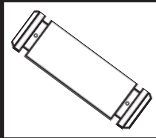
HPLG	Diameter (D)	Effective Length (EL)	Length (L)	Groove Width (B)	Groove Dia. (G)	WEIGHT Lbs. per 100 Pieces	MATERIALS Zinc Clear "HPLG-"
	DIAMETER	LENGTH					
-0187-0750	3/16	3/4	1.031	.029	.147	0.81	
-0187-1000		1	1.281			1.00	
-0187-1250		1-1/4	1.531			1.20	
-0187-1500		1-1/2	1.781			1.40	
-0250-0750	1/4	3/4	1.031	.029	.210	1.44	
-0250-1000		1	1.281			1.78	
-0250-1250		1-1/4	1.531			2.13	
-0250-1500	5/16	1-1/2	1.781	.029	.250	2.48	
-0312-0750		3/4	1.093			2.38	
-0312-1000		1	1.343			2.92	
-0312-1250		1-1/4	1.593			3.47	
-0312-1500	3/8	1-1/2	1.843	.039	.303	4.01	
-0375-1000		1	1.343			4.21	
-0375-1250		1-1/4	1.593			4.99	
-0375-1500		1-1/2	1.843			5.78	
-0375-2000	1/2	2	2.343	.046	.396	7.34	
-0375-2500		2-1/2	2.843			8.91	
-0375-3000		3	3.343			10.47	
-0500-1000	1/2	1	1.406	.046	.396	7.83	
-0500-1250		1-1/4	1.656			9.22	
-0500-1500		1-1/2	1.906			10.61	
-0500-2000		2	2.406			13.40	
-0500-2500		2-1/2	2.906			16.18	
-0500-3000	3	3.406	18.97				

**GROOVED WITH HOLES**



**CYLINDER**  
**MANUFACTURER CROSS-REFERENCE**

ITW/Bee-Leitzke	14	Miller	C/CH
-----------------	----	--------	------



HLPC	Diameter (D)	Effective Length (EL)	Length (L)	Groove Dia. (G)	Hole Size (H)	WEIGHT Lbs. per 100 Pieces	MATERIALS Zinc Clear "HLPC-"
	DIAMETER	LENGTH					
-1000-2125	1	2-1/8	2-7/8	.835	.203	63.97	
-1000-2250	1	2-1/4	3	.835		66.75	
-1000-2750	1	2-3/4	3-1/2	.835		77.88	
-1000-2875	1	2-7/8	3-5/8	.835		80.66	
-1000-3000	1	3	3-3/4	.835		83.44	
-1000-3250	1	3-1/4	4	.835		89.00	
-1000-3375	1	3-3/8	4	.835		89.00	
-1250-3250	1-1/4	3-1/4	4	1.160		138.93	



**MOST SIZES AVAILABLE IMMEDIATELY • \$2 LINE REQUESTED • CALL PLANT FOR QUANTITY DISCOUNTS**

All manufacturer names and numbers are for identification purposes only. In no way are we implying that our parts were made by the manufacturers listed above. Prices, materials, tolerances, and grades subject to change without notice.