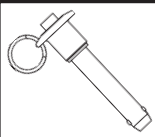
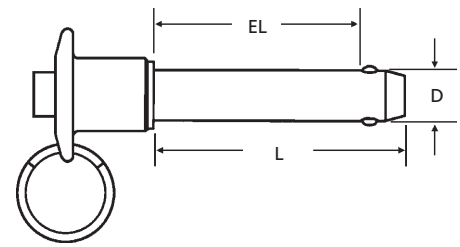


SELF-LOCKING PINS

785-392-3017 FAX 785.392.2845

REVISED 06-04
www.huyett.com

PRECISION GROUND



BUTTON HEAD

MANUFACTURER CROSS-REFERENCE

Carr Lane	BLPB	Reid Tool	BLB
Avibank	BLB	Lockwell	LGB

PLB	Nominal Diameter (D)	Effective Length (EL)	Overall Length (L)	WEIGHT	MATERIAL			
	DIAMETER	LENGTH		Lbs. per 100 Pieces	Alloy Steel "PLB-"	17-4 Stainless "PLBS-"	300 Stainless "PLBS3-"	
-0187-0500	3/16	.1870 / .1885	1/2	.760	8.28			
-0187-0750			3/4	1.010	8.52			
-0187-1000			1	1.260	8.75			
-0187-1250			1-1/4	1.510	8.98			
-0187-1500			1-1/2	1.760	9.22			
-0187-2000			2	2.260	9.69			
-0187-2500			2-1/2	2.760	10.16			
-0187-3000			3	3.260	10.63			
-0250-0500	1/4	.2470 / .2485	1/2	.790	11.72			
-0250-0750			3/4	1.040	12.11			
-0250-1000			1	1.290	12.50			
-0250-1250			1-1/4	1.540	12.89			
-0250-1500			1-1/2	1.790	13.28			
-0250-1750			1-3/4	2.040	13.67			
-0250-2000			2	2.290	14.06			
-0250-2500			2-1/2	2.790	14.84			
-0250-3000	5/16	.3095 / .3110	3	3.290	15.63			
-0250-3500			3-1/2	3.790	16.41			
-0250-4000			4	4.290	17.19			
-0312-0500			1/2	.830	13.75			
-0312-0750			3/4	1.080	14.38			
-0312-1000			1	1.330	15.00			
-0312-1250			1-1/4	1.580	15.63			
-0312-1500			1-1/2	1.830	16.25			
-0312-2000	3/8	.3720 / .3735	2	2.330	17.50			
-0312-2500			2-1/2	2.830	18.75			
-0312-3000			3	3.330	20.00			
-0312-3500			3-1/2	3.830	21.25			
-0312-4000			4	4.330	22.50			
-0312-4500			4-1/2	4.830	23.75			
-0312-5000			5	5.330	25.00			
-0312-6000			6	6.330	27.50			
-0375-0500			1/2	.865	16.56			
-0375-1000			1	1.365	18.13			
-0375-1250			1-1/4	1.615	18.91			
-0375-1500			1-1/2	1.865	19.69			
-0375-1750			1-3/4	2.115	20.47			
-0375-2000			2	2.365	21.25			
-0375-2250			2-1/4	2.615	22.03			

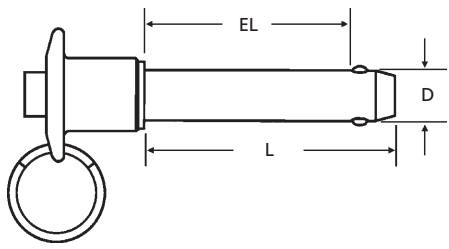
DESCRIPTION	GENERAL USE	HOW TO IDENTIFY	APPLICATION
<p>PLB</p> <p>Button head positive lock pins are the most commonly used in this particular line of pins. Self-locking pins use a mechanical works such that the ball will not release until the button on the handle is depressed.</p> <p>BUTTON HEAD</p>	<p>COMMON</p>	<ol style="list-style-type: none"> 1. Verify button head design. 2. Measure diameter (D). 3. Measure effective length (EL). 4. Find the part in the chart above. <p>TYPICAL PART NUMBER SEQUENCE: PLB-0375-0500 is a 3/8" x 1/2" alloy button head pin.</p>	<p>As a secure, quick release linking mechanism.</p>

PERFORMANCE RESULTS VARY. YOUR PIN SELECTION SHOULD BE MADE BASED ON INDIVIDUAL APPLICATION.

MOST SIZES AVAILABLE IMMEDIATELY • \$2 LINE REQUESTED • CALL PLANT FOR QUANTITY DISCOUNTS

AVAILABLE IN THREE GRADES

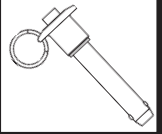
BOX 232 • MINNEAPOLIS, KS • 67467



BUTTON HEAD

MANUFACTURER CROSS-REFERENCE

Carr Lane	BLPB	Reid Tool	BLB
Avibank	BLB	Lockwell	LGB



PLB	Nominal Diameter (D)	Effective Length (EL)	Overall Length (L)	WEIGHT Lbs. per 100 Pieces	MATERIAL		
	DIAMETER				LENGTH	Alloy Steel "PLB-"	17-4 Stainless "PLBS-"
-0375-2500	3/8	.3720 / .3735	2-1/2	2.865			
-0375-3000			3	3.365			
-0375-3500			3-1/2	3.865			
-0375-4000			4	4.365			
-0375-4500			4-1/2	4.865			
-0375-5000			5	5.365			
-0375-5500	5-1/2	5.865					
-0375-6000	6	6.365					
-0437-1000	7/16	.4345 / .4360	1	1.380			
-0437-1500			1-1/2	1.880			
-0437-2000			2	2.380			
-0437-2500	2-1/2	2.880					
-0500-1000	1/2	.4970 / .4985	1	1.460			
-0500-1250			1-1/4	1.710			
-0500-1500			1-1/2	1.960			
-0500-1750			1-3/4	2.210			
-0500-2000			2	2.460			
-0500-2500			2-1/2	2.960			
-0500-3000			3	3.460			
-0500-3500			3-1/2	3.960			
-0500-4000			4	4.460			
-0500-4500			4-1/2	4.960			
-0500-5000			5	5.460			
-0500-5500			5-1/2	5.960			
-0500-6000	6	6.460					
-0625-1500	5/8	.6220 / .6235	1-1/2	2.080			
-0625-2000			2	2.580			
-0625-2500			2-1/2	3.080			
-0625-3000			3	3.580			
-0625-3500			3-1/2	4.080			
-0625-4000			4	4.580			
-0625-4500	4-1/2	5.080					
-0625-5000	5	5.580					
-0625-5500	5-1/2	6.080					
-0625-6000	6	6.580					
-0750-1500	3/4	.7470 / .7485	1-1/2	2.170			
-0750-2000			2	2.670			
-0750-2500			2-1/2	3.170			
-0750-3000			3	3.670			
-0750-3500			3-1/2	4.170			
-0750-4000			4	4.670			
-0750-4500	5	5.170					
-0750-5000	5-1/2	5.670					
-1000-2000	1	.9970 / .9985	2	2.890			
-1000-2500			2-1/2	3.390			
-1000-3000			3	3.890			
-1000-4000			4	4.890			
-1000-5000			5	5.890			
-1000-6000	6	6.890					



MOST SIZES AVAILABLE IMMEDIATELY • \$2 LINE REQUESTED • CALL PLANT FOR QUANTITY DISCOUNTS

All manufacturer names and numbers are for identification purposes only. In no way are we implying that our parts were made by the manufacturers listed above. Prices, materials, tolerances, and grades subject to change without notice.