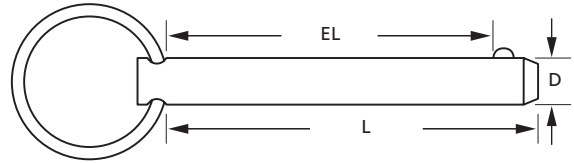


# SELF-LOCKING PINS

785-392-3017 FAX 785.392.2845

REVISED 06-04  
www.huyett.com

AVAILABLE IN STAINLESS



## DETENT

### MANUFACTURER CROSS-REFERENCE

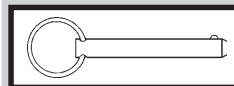
ITW/Bee-Leitzke	30	Pivot Point	DRI
Aerofast	C		

DTP	Nominal (D)	Effective Length (EL)		Overall Length (L)		WEIGHT	MATERIAL		
	DIAMETER	Fraction	Decimal	Decimal	Fraction	Lbs. per 100 Pieces	Zinc Clear "DTP-"	300 SS "DTPS-"	316 SS "DTPS6-"
-0187-0400	3/16	---	.4	0.788	---	0.90			
-0187-0500		1/2	.5	0.688	11/16	1.05			
-0187-0600		---	.6	0.988	---	1.20			
-0187-0700		---	.7	1.088	---	1.35			
-0187-0800		---	.8	1.188	1-3/16	1.50			
-0187-0812		13/16	.812	1.000	1	1.50			
-0187-0900		---	.9	1.288	---	1.53			
-0187-1000		1	1.0	1.188	1-3/16	1.65			
-0187-1100		---	1.1	1.488	---	1.71			
-0187-1200		---	1.2	1.588	---	1.77			
-0187-1300		---	1.3	1.688	1-11/16	1.90			
-0187-1312		1-5/16	1.312	1.500	1-1/2	1.90			
-0187-1400		---	1.4	1.788	---	1.97			
-0187-1500		1-1/2	1.5	1.688	1-11/16	2.04			
-0187-1600		---	1.6	1.988	---	2.13			
-0187-1700		---	1.7	2.088	---	2.21			
-0187-1800		---	1.8	2.188	2-3/16	2.30			
-0187-1812		1-13/16	1.812	2.000	2	2.30			
-0187-1900		---	1.9	2.288	---	2.37			
-0187-2000		2	2.0	2.188	2-3/16	2.43			
-0187-2312	2-5/16	2.312	2.500	2-1/2	2.78				
-0187-2500	---	2.5	2.888	---	3.00				
-0187-2600	---	2.6	2.988	---	3.11				
-0187-2812	2-13/16	2.812	3.000	3	3.34				
-0187-3000	3	3.0	3.388	---	3.56				
-0250-0400	1/4	---	.4	0.933	---	1.54			
-0250-0500		1/2	.5	0.750	3/4	1.65			
-0250-0600		---	.6	1.133	---	1.98			
-0250-0700		---	.7	1.233	---	2.20			
-0250-0750		3/4	.75	1.000	1	2.20			
-0250-0800		---	.8	1.333	---	2.32			
-0250-0900		---	.9	1.433	---	2.44			
-0250-1000		1	1.0	1.250	1-1/4	2.54			
-0250-1100		---	1.1	1.633	---	2.73			
-0250-1200		---	1.2	1.733	---	2.90			
-0250-1250		1-1/4	1.25	1.500	1-1/2	2.90			
-0250-1300		---	1.3	1.833	---	3.02			
-0250-1400		---	1.4	1.933	---	3.13			
-0250-1500		1-1/2	1.5	1.750	1-3/4	3.22			

+ .060/- .000

DTP	DESCRIPTION	GENERAL USE	HOW TO IDENTIFY	APPLICATION
	<p>Detent pins are designed to use in temporary quick disconnect operations. The pin has a ball bearing on one end with a steel spring works that depresses and springs out to lock the pin into place.</p> <p><b>DETENT</b></p>	<p>COMMON</p>	<ol style="list-style-type: none"> <li>Verify ring grip pin with spring loaded detent ball at opposite end.</li> <li>Measure diameter (D).</li> <li>Measure effective length (EL).</li> <li>Find the part in the chart above.</li> </ol> <p><b>TYPICAL PART NUMBER SEQUENCE:</b> DTP-0187-0500 is a 3/16" x 1/2" zinc detent pin.</p>	<p>Used on sailboats in combination with tie-downs.</p>

PERFORMANCE RESULTS VARY. YOUR PIN SELECTION SHOULD BE MADE BASED ON INDIVIDUAL APPLICATION.



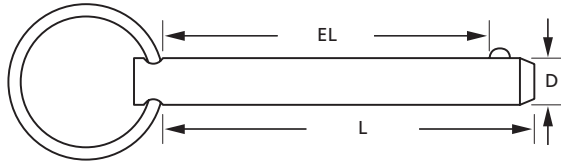
Ring is positioned on the same vertical plane as the ball bearing.



MOST SIZES AVAILABLE IMMEDIATELY • \$2 LINE REQUESTED • CALL PLANS FOR QUANTITY DISCOUNTS

AVAILABLE IN STAINLESS

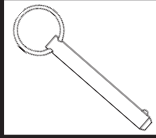
BOX 232 • MINNEAPOLIS, KS • 67467



**DETENT**

**MANUFACTURER CROSS-REFERENCE**

ITW/Bee-Leitzke	30	Pivot Point	DRI
Aerofast	C		



DTP	Nominal (D)	Effective Length (EL)		Overall Length (L)		WEIGHT	MATERIAL		
	DIAMETER	Fraction	Decimal	Decimal	Fraction	Lbs. per 100 Pieces	Zinc Clear "DTP-"	300 SS "DTPS-"	316 SS "DTPS6-"
		LENGTH							
-0250-1600	1/4	---	1.6	2.133	---	3.43			
-0250-1700		---	1.7	2.233	---	3.60			
-0250-1750		1-3/4	1.75	2.000	2	3.60			
-0250-1800		---	1.8	2.333	---	3.72			
-0250-1900		---	1.9	2.433	---	3.83			
-0250-2000		2	2.0	2.250	2-1/4	3.92			
-0250-2100		---	2.1	2.633	---	4.13			
-0250-2200		---	2.2	2.733	---	4.30			
-0250-2250		2-1/4	2.25	2.500	2-1/2	4.30			
-0250-2300		---	2.3	2.833	---	4.43			
-0250-2400		---	2.4	2.933	---	4.56			
-0250-2500		2-1/2	2.5	2.750	2-3/4	4.64			
-0250-2700		---	2.7	3.233	---	4.93			
-0250-2750		2-3/4	2.75	3.000	---	4.93			
-0250-3000		3	3.0	3.250	3-1/4	5.34			
-0250-3200		---	3.2	3.733	---	5.75			
-0250-3250		3-1/4	3.25	3.500	3-1/2	5.75			
-0250-3500		3-1/2	3.5	4.033	---	6.24			
-0250-3750		3-3/4	3.75	4.000	4	6.57			
-0250-4000		4	4.0	4.533	---	7.06			
-0250-4250		4-1/4	4.25	4.500	4-1/2	7.39			
-0250-4750		4-3/4	4.75	5.000	5	8.21			
-0250-5000		5	5.0	5.533	---	8.70			
-0250-6000		6	6.0	6.533	---	10.35			
-0312-0625	5/16	5/8	.625	1.000	1	3.30			
-0312-0750		3/4	.750	1.125	1-1/8	3.59			
-0312-0800		---	.8	1.425	---	3.51			
-0312-1000		1	1.0	1.375	1-3/8	4.14			
-0312-1125		1-1/8	1.125	1.500	1-1/2	4.40			
-0312-1200		---	1.2	1.825	---	4.69			
-0312-1250		1-1/4	1.25	1.625	1-5/8	4.77			
-0312-1300		---	1.3	1.925	---	4.99			
-0312-1400		---	1.4	2.025	---	5.28			
-0312-1500		1-1/2	1.5	1.875	1-7/8	5.50			
-0312-1600		---	1.6	2.225	---	5.87			
-0312-1625		1-5/8	1.625	2.000	2	5.87			
-0312-1700		---	1.7	2.325	---	6.16			
-0312-1800		---	1.8	2.425	---	6.46			
-0312-1900		---	1.9	2.525	---	6.75			
-0312-2000		2	2.0	2.375	2-3/8	6.97			

DESCRIPTION	GENERAL USE	HOW TO IDENTIFY	APPLICATION
DTP <b>DETENT</b>	 COMMON	1. Verify ring grip pin with spring loaded detent ball at opposite end. 2. Measure diameter (D). 3. Measure effective length (EL). 4. Find the part in the chart above.	Attaches two tent poles.
		<b>TYPICAL PART NUMBER SEQUENCE:</b> <b>DTPS-0250-2000</b> is a 1/4" x 2" stainless detent pin.	

PERFORMANCE RESULTS VARY. YOUR PIN SELECTION SHOULD BE MADE BASED ON INDIVIDUAL APPLICATION.

**MOST SIZES AVAILABLE IMMEDIATELY • \$2 LINE REQUESTED • CALL PLANT FOR QUANTITY DISCOUNTS**

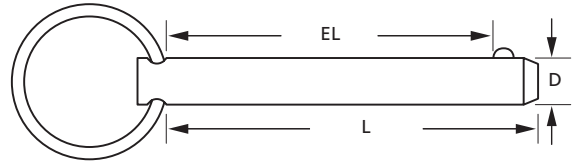
All manufacturer names and numbers are for identification purposes only. In no way are we implying that our parts were made by the manufacturers listed above. Prices, materials, tolerances, and grades subject to change without notice.

# SELF-LOCKING PINS

785-392-3017 FAX 785.392.2845

REVISED 06-04  
www.huyett.com

AVAILABLE IN STAINLESS



## DETENT

### MANUFACTURER CROSS-REFERENCE

ITW/Bee-Leitzke	30	Pivot Point	DRI
Aerofast	C		

DTP	Nominal (D) DIAMETER	Effective Length (EL) LENGTH		Overall Length (L)		WEIGHT Lbs. per 100 Pieces	MATERIAL		
		Fraction	Decimal	Decimal	Fraction		Zinc Clear "DTP-"	300 SS "DTPS-"	316 SS "DTPS6-"
-0312-2125	5/16	2-1/8	2.125	2.500	2-1/2	7.34			
-0312-2200		---	2.2	2.825	---	7.63			
-0312-2500		2-1/2	2.5	2.875	2-7/8	8.44			
-0312-2625		2-5/8	2.625	3.000	3	8.81			
-0312-3000		3	3.0	3.375	3-3/8	9.91			
-0312-3125		3-1/8	3.125	3.500	3-1/2	10.27			
-0312-3500		3-1/2	3.5	4.125	4-1/8	11.44			
-0312-3625		3-5/8	3.625	4.000	4	11.74			
-0312-4000		4	4.0	4.375	4-3/8	12.84			
-0312-4125		4-1/8	4.125	4.500	4-1/2	13.20			
-0312-4625		4-5/8	4.625	5.000	5	14.67			
-0312-5000		5	5.0	5.625	5-5/8	15.85			
-0312-5125	5-1/8	5.125	5.500	5-1/2	16.14				
-0312-6000	6	6.0	6.625	6-5/8	18.78				
-0375-0500	3/8	1/2	.5	1.250	1-1/4	4.14			
-0375-0600		---	.6	1.350	---	3.78			
-0375-0625		5/8	.625	1.000	1	3.44			
-0375-0700		---	.7	1.450	---	4.13			
-0375-0750		3/4	.75	1.125	1-1/8	3.87			
-0375-0800		---	.8	1.550	---	4.47			
-0375-0900		---	.9	1.650	---	4.82			
-0375-1000		1	1.0	1.375	1-3/8	4.73			
-0375-1100		---	1.1	1.850	---	5.50			
-0375-1125		1-1/8	1.125	1.500	1-1/2	5.31			
-0375-1200		---	1.2	1.950	---	5.85			
-0375-1300		---	1.3	2.050	---	6.19			
-0375-1400		---	1.4	2.150	---	6.54			
-0375-1500		1-1/2	1.5	1.875	1-7/8	6.45			
-0375-1600		---	1.6	2.350	---	7.22			
-0375-1625		1-5/8	1.625	2.000	2	6.88			
-0375-1700		---	1.7	2.450	---	7.57			
-0375-1750		1-3/4	1.75	2.125	2-1/8	7.31			
-0375-1800		---	1.8	2.550	---	7.91			
-0375-1900		---	1.9	2.650	---	8.26			
-0375-2000		2	2.0	2.375	2-3/8	8.17			
-0375-2100		---	2.1	2.850	---	8.94			
-0375-2125		2-1/8	2.125	2.500	2-1/2	8.60			
-0375-2200		---	2.2	3.950	---	9.29			
-0375-2300		---	2.3	3.050	---	9.63			

DESCRIPTION	GENERAL USE	HOW TO IDENTIFY	APPLICATION
<p><b>DTP</b></p> <p>Detent pins are designed to use in temporary quick disconnect operations. The pin has a ball bearing on one end with a steel spring works that depresses and springs out to lock the pin into place.</p> <p><b>DETENT</b></p>	<p>COMMON</p>	<ol style="list-style-type: none"> <li>1. Verify ring grip pin with spring loaded detent ball at opposite end.</li> <li>2. Measure diameter (D).</li> <li>3. Measure effective length (EL).</li> <li>4. Find the part in the chart above.</li> </ol> <p><b>TYPICAL PART NUMBER SEQUENCE:</b> DTP-0187-0500 is a 3/16" x 1/2" zinc detent pin.</p>	<p>As a locator pin.</p>

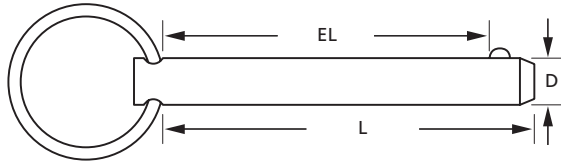
PERFORMANCE RESULTS VARY. YOUR PIN SELECTION SHOULD BE MADE BASED ON INDIVIDUAL APPLICATION.



**MOST SIZES AVAILABLE IMMEDIATELY • \$2 LINE REQUESTED • CALL PLANT FOR QUANTITY DISCOUNTS**

AVAILABLE IN STAINLESS

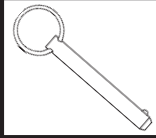
BOX 232 • MINNEAPOLIS, KS • 67467



**DETENT**

**MANUFACTURER CROSS-REFERENCE**

ITW/Bee-Leitzke	30	Pivot Point	DRI
Aerofast	C		



DTP	Nominal (D)	Effective Length (EL)		Overall Length (L)		WEIGHT	MATERIAL		
	DIAMETER	Fraction	Decimal	Decimal	Fraction	Lbs. per 100 Pieces	Zinc Clear "DTP-"	300 SS "DTPS-"	316 SS "DTPS6-"
-0375-2400	3/8	---	2.4	3.150	---	9.99			
-0375-2500		2-1/2	2.5	2.875	2-7/8	9.89			
-0375-2600		---	2.6	3.350	---	10.66			
-0375-2625		2-5/8	2.625	3.000	3	10.32			
-0375-2700		---	2.7	3.450	---	11.01			
-0375-2800		---	2.8	3.550	---	11.35			
-0375-2900		---	2.9	3.650	---	11.70			
-0375-3000		3	3.0	3.375	3-3/8	11.57			
-0375-3125		3-1/8	3.125	3.500	3-1/2	12.04			
-0375-3500		3-1/2	3.5	3.875	3-7/8	13.33			
-0375-3625		3-5/8	3.625	4.000	4	13.76			
-0375-4000		4	4.0	4.750	4-3/4	15.48			
-0375-4125		4-1/8	4.125	4.500	4-1/2	15.48			
-0375-4500		4-1/2	4.5	5.250	5-1/4	17.20			
-0375-4625		4-5/8	4.625	5.000	5	17.20			
-0375-5000		5	5.0	5.750	5-3/4	18.92			
-0375-5125		5-1/8	5.125	5.500	5-1/2	18.92			
-0375-6000		6	6.0	6.750	6-3/4	22.36			
-0375-6200	---	6.2	6.950	---	23.05				
-0375-7000	7	7.0	7.750	7-3/4	25.80				
-0437-0562	7/16	9/16	.562	1.000	1	4.10			
-0437-1000		1	1.0	1.438	1-7/16	5.89			
-0437-1062		1-1/16	1.062	1.500	1-1/2	6.38			
-0437-1500		1-1/2	1.5	2.313	2-5/16	8.60			
-0437-1562		1-9/16	1.562	2.000	2	8.19			
-0437-2000		2	2.0	2.438	2-7/16	11.92			
-0437-2062		2-1/16	2.062	2.500	2-1/2	12.20			
-0437-2500		2-1/2	2.5	2.938	2-15/16	14.04			
-0437-2562		2-9/16	2.562	3.000	3	14.30			
-0437-3000		3	3.0	3.438	3-7/16	16.18			
-0437-3062		3-1/16	3.062	3.500	3-1/2	16.47			
-0437-3500		3-1/2	3.5	4.313	4-5/16	19.29			
-0437-3562		3-9/16	3.562	4.000	4	18.82			
-0437-4000		4	4.0	4.813	4-13/16	21.65			
-0437-4062		4-1/16	4.062	4.500	4-1/2	21.18			
-0437-4500		4-1/2	4.5	5.313	5-5/16	24.00			
-0437-4562		4-9/16	4.562	5.000	5	23.53			
-0437-5000		5	5.0	5.813	5-13/16	26.35			
-0437-5062	5-1/16	5.062	5.500	5-1/2	25.88				

DESCRIPTION	GENERAL USE	HOW TO IDENTIFY	APPLICATION
<p><b>DTP</b></p> <p>Detent pins are designed to use in temporary quick disconnect operations. The pin has a ball bearing on one end with a steel spring works that depresses and springs out to lock the pin into place.</p> <p><b>DETENT</b></p>	<p><b>COMMON</b></p>	<ol style="list-style-type: none"> <li>1. Verify ring grip pin with spring loaded detent ball at opposite end.</li> <li>2. Measure diameter (D).</li> <li>3. Measure effective length (EL).</li> <li>4. Find the part in the chart above.</li> </ol> <p><b>TYPICAL PART NUMBER SEQUENCE:</b>  <b>DTPS-0250-2000</b>                      is a 1/4" x 2" stainless detent pin.</p>	<p>Ring attaches conveniently to lanyard.</p>

PERFORMANCE RESULTS VARY. YOUR PIN SELECTION SHOULD BE MADE BASED ON INDIVIDUAL APPLICATION.

**MOST SIZES AVAILABLE IMMEDIATELY • \$2 LINE REQUESTED • CALL PLANT FOR QUANTITY DISCOUNTS**

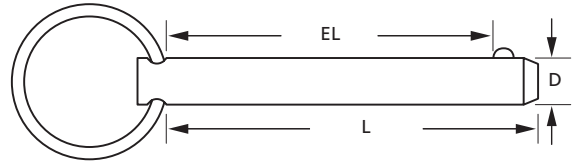
All manufacturer names and numbers are for identification purposes only. In no way are we implying that our parts were made by the manufacturers listed above. Prices, materials, tolerances, and grades subject to change without notice.

# SELF-LOCKING PINS

785-392-3017 FAX 785.392.2845

REVISED 06-04  
www.huyett.com

AVAILABLE IN STAINLESS



## DETENT

### MANUFACTURER CROSS-REFERENCE

ITW/Bee-Leitzke	30	Pivot Point	DRI
Aerofast	C		

DTP	Nominal (D) DIAMETER	Effective Length (EL) LENGTH		Overall Length (L)		WEIGHT Lbs. per 100 Pieces	MATERIAL		
		Fraction	Decimal	Decimal	Fraction		Zinc Clear "DTP-"	300 SS "DTPS-"	316 SS "DTPS6-"
-0500-0500	1/2	1/2	.5	1.000	1	7.40			
-0500-0600		---	.6	1.538	---	8.88			
-0500-0800		---	.8	1.738	---	10.36			
-0500-1000		1	1.0	1.500	1-1/2	11.10			
-0500-1100		---	1.1	2.038	---	12.58			
-0500-1200		---	1.2	2.138	---	13.32			
-0500-1300		---	1.3	2.238	---	14.06			
-0500-1400		---	1.4	2.338	---	14.80			
-0500-1500		1-1/2	1.5	2.000	2	14.80			
-0500-1600		---	1.6	2.538	---	16.28			
-0500-1700		---	1.7	2.638	---	17.02			
-0500-1800		---	1.8	2.738	---	17.76			
-0500-1900		---	1.9	2.838	---	18.50			
-0500-2000		2	2.0	2.500	2-1/2	18.50			
-0500-2100		---	2.1	3.038	---	19.98			
-0500-2200		---	2.2	3.138	---	20.72			
-0500-2300		---	2.3	3.238	---	21.46			
-0500-2400		---	2.4	3.338	---	22.20			
-0500-2500		2-1/2	2.5	3.000	3	22.20			
-0500-2600		---	2.6	3.538	---	23.68			
-0500-2700		---	2.7	3.638	---	24.42			
-0500-2800		---	2.8	3.738	---	25.16			
-0500-3000		3	3.0	3.500	3-1/2	25.90			
-0500-3100		---	3.1	4.038	---	27.38			
-0500-3200		---	3.2	4.138	---	28.12			
-0500-3300		---	3.3	4.238	---	28.86			
-0500-3500		3-1/2	3.5	4.000	4	29.60			
-0500-3800		---	3.8	4.738	---	32.56			
-0500-4000		4	4.0	4.500	4-1/2	33.30			
-0500-4300		---	4.3	5.238	---	36.26			
-0500-4500		4-1/2	4.5	5.000	5	37.00			
-0500-5000		5	5.0	5.500	5-1/2	40.70			
-0500-5500		5-1/2	5.5	6.438	6-7/16	45.14			
-0500-6000		6	6.0	6.938	6-15/16	48.84			
-0500-7000		7	7.0	7.938	7-15/16	56.24			
-0625-1000	5/8	1	1.0	2.125	2-1/8	27.31			
-0625-1300		---	1.3	2.425	---	31.86			
-0625-1500		1-1/2	1.5	2.625	2-5/8	34.90			
-0625-1700		---	1.7	2.825	---	37.93			
-0625-2000		2	2.0	3.125	3-1/8	42.48			

+ .060/- .000

DESCRIPTION	GENERAL USE	HOW TO IDENTIFY	APPLICATION
<p><b>DTP</b></p> <p>Detent pins are designed to use in temporary quick disconnect operations. The pin has a ball bearing on one end with a steel spring works that depresses and springs out to lock the pin into place.</p> <p><b>DETENT</b></p>	<p>COMMON</p>	<ol style="list-style-type: none"> <li>1. Verify ring grip pin with spring loaded detent ball at opposite end.</li> <li>2. Measure diameter (D).</li> <li>3. Measure effective length (EL).</li> <li>4. Find the part in the chart above.</li> </ol> <p><b>TYPICAL PART NUMBER SEQUENCE:</b> DTP-0187-0500 is a 3/16" x 1/2" zinc detent pin.</p>	<p>As a spring retainer.</p>

PERFORMANCE RESULTS VARY. YOUR PIN SELECTION SHOULD BE MADE BASED ON INDIVIDUAL APPLICATION.

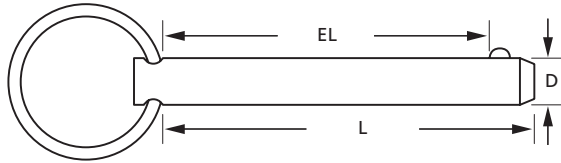


**MOST SIZES AVAILABLE IMMEDIATELY • \$2 LINE REQUESTED • CALL PLANT FOR QUANTITY DISCOUNTS**



AVAILABLE IN STAINLESS

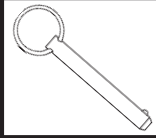
BOX 232 • MINNEAPOLIS, KS • 67467



**DETENT**

**MANUFACTURER CROSS-REFERENCE**

ITW/Bee-Leitzke	30	Pivot Point	DRI
Aerofast	C		



DTP	Nominal (D)	Effective Length (EL)		Overall Length (L)		WEIGHT	MATERIAL		
	DIAMETER	Fraction	Decimal	Decimal	Fraction	Lbs. per 100 Pieces	Zinc Clear "DTP-"	300 SS "DTPS-"	316 SS "DTPS6-"
-0625-2500	5/8	2-1/2	2.5	3.625	3-5/8	50.07			
-0625-3000		3	3.0	4.125	4-1/8	57.65			
-0625-3500		3-1/2	3.5	4.625	4-5/8	65.24			
-0625-4000		4	4.0	5.125	5-1/8	72.83			
-0625-4500		4-1/2	4.5	5.625	5-5/8	80.41			
-0625-5000		5	5.0	6.125	6-1/8	88.00			
-0625-5500		5-1/2	5.5	6.625	6-5/8	95.58			
-0625-6000		6	6.0	7.125	7-1/8	103.17			
-0625-7000	7	7.0	8.125	8-1/8	118.34				
-0625-8000	8	8.0	9.125	9-1/8	133.51				
-0750-1000	3/4	1	1.0	2.125	2-1/8	59.10			
-0750-1300		---	1.3	2.425	---	68.43			
-0750-1500		1-1/2	1.5	2.625	2-5/8	74.65			
-0750-2000		2	2.0	3.125	3-1/8	90.21			
-0750-2500		2-1/2	2.5	3.625	3-5/8	105.76			
-0750-2600		---	2.6	3.725	---	108.87			
-0750-3000		3	3.0	4.125	4-1/8	121.31			
-0750-3100		---	3.1	4.225	---	124.42			
-0750-3500		3-1/2	3.5	4.625	4-5/8	136.86			
-0750-4000		4	4.0	5.125	5-1/8	152.42			
-0750-4500		4-1/2	4.5	5.625	5-5/8	167.97			
-0750-5000		5	5.0	6.125	6-1/8	183.52			
-0750-5500		5-1/2	5.5	6.625	6-5/8	199.07			
-0750-6000		6	6.0	7.125	7-1/8	214.63			
-0750-6500		6-1/2	6.5	7.625	7-5/8	230.18			
-0750-7000		7	7.0	8.125	8-1/8	245.73			
-0750-8000	8	8.0	9.125	9-1/8	276.84				
-1000-2000	1	2	2.0	3.750	3-3/4	210.43			
-1000-2500		2-1/2	2.5	4.250	4-1/4	242.31			
-1000-2600		---	2.6	4.350	---	248.69			
-1000-3000		3	3.0	4.750	4-3/4	274.20			
-1000-3500		3-1/2	3.5	5.250	5-1/4	306.08			
-1000-4000		4	4.0	5.750	5-3/4	337.96			
-1000-4500		4-1/2	4.5	6.250	6-1/4	369.84			
-1000-4800		---	4.8	6.550	---	388.98			
-1000-5000		5	5.0	6.750	6-3/4	401.73			
-1000-5500		5-1/2	5.5	7.250	7-1/4	433.61			
-1000-6000		6	6.0	7.750	7-3/4	465.50			
-1000-6500		6-1/2	6.5	8.250	8-1/4	497.38			
-1000-7000		7	7.0	8.750	8-3/4	529.26			
-1000-8000		8	8.0	9.750	9-3/4	593.03			

DESCRIPTION	GENERAL USE	HOW TO IDENTIFY	APPLICATION
<p><b>DTP</b></p> <p>Detent pins are designed to use in temporary quick disconnect operations. The pin has a ball bearing on one end with a steel spring works that depresses and springs out to lock the pin into place.</p> <p><b>DETENT</b></p>	<p>COMMON</p>	<ol style="list-style-type: none"> <li>1. Verify ring grip pin with spring loaded detent ball at opposite end.</li> <li>2. Measure diameter (D).</li> <li>3. Measure effective length (EL).</li> <li>4. Find the part in the chart above.</li> </ol> <p><b>TYPICAL PART NUMBER SEQUENCE:</b>  <b>DTPS-0250-2000</b>                      is a 1/4" x 2" stainless detent pin.</p>	<p>To secure a trailer hitch.</p>

PERFORMANCE RESULTS VARY. YOUR PIN SELECTION SHOULD BE MADE BASED ON INDIVIDUAL APPLICATION.

**MOST SIZES AVAILABLE IMMEDIATELY • \$2 LINE REQUESTED • CALL PLANT FOR QUANTITY DISCOUNTS**

All manufacturer names and numbers are for identification purposes only. In no way are we implying that our parts were made by the manufacturers listed above. Prices, materials, tolerances, and grades subject to change without notice.