

LOW- TO MEDIUM-LOAD APPLICATIONS
 REPLACEABLE GLIDE PADS
 LOW FRICTION
 MOUNTING THROUGH HOLES OR THREADED ADJUSTING
 STUDS FOR MOUNTING

PHONE: 516.328.3300 • FAX: 516.326.8827 • WWW.SDP-SI.COM

► **MATERIAL:**

Rails - Anodized Aluminum
Carriage Assembly - Zinc, Chromated
 and J® Polymer Pads

► **OPERATING TEMPERATURE:**

-40°C to +90°C

► **SPECIFICATIONS:**

Maximum Load: 500 N
Maximum Speed: 15 m/s

FOR MACHINE SCREWS M4
 DIN 7984 / DIN 6912
 DIN 84 / EN ISO 1707

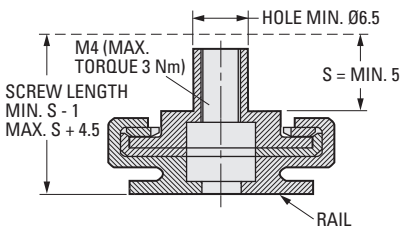
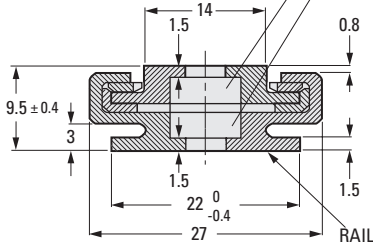
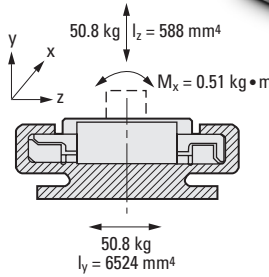
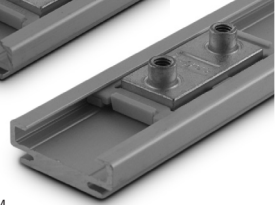


Fig. 1



Fig. 2



LOAD DATA:
 WITH AND WITHOUT
 MOUNTING STUDS

I = Moment of Inertia
 M = Max. Torque

$M_y = 0.25 \text{ kg} \cdot \text{m}$
 $M_z = 0.25 \text{ kg} \cdot \text{m}$

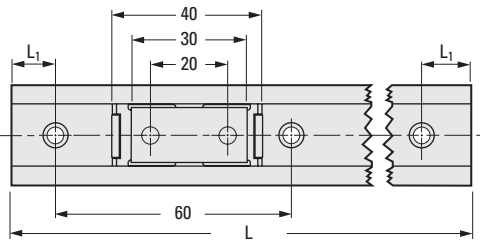


Fig. 1
 Without Mounting Studs

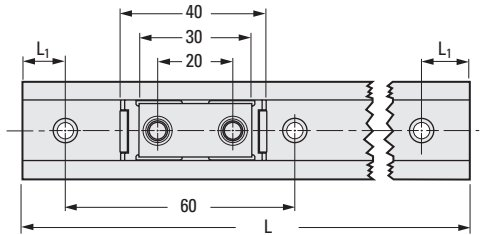


Fig. 2
 With Mounting Studs

METRIC COMPONENT

Catalog Number	Fig. No.	L Length mm	L ₁	Weight g
Rails				
S99GNRM271000	-	1000	20	290
S99GNRM272000	-	2000	40	580
S99GNRM273000	-	3000	30	870
Carriage Assembly				
S99GNCM27A401	1	-	-	10.8
S99GNCM27B402	2	-	-	12.5