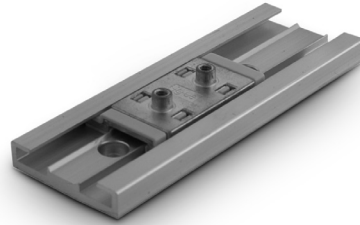


MEDIUM- TO HIGH-LOAD APPLICATIONS  
REPLACEABLE GLIDE PADS  
LOW FRICTION

PHONE: 516.328.3300 • FAX: 516.326.8827 • WWW.SDP-SI.COM



**> MATERIAL:**

**Rails** - Anodized Aluminum  
**Carriage Assembly** - Zinc, Chromated  
and J® Polymer Pads

**> OPERATING TEMPERATURE:**

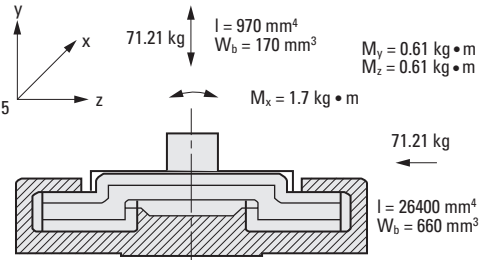
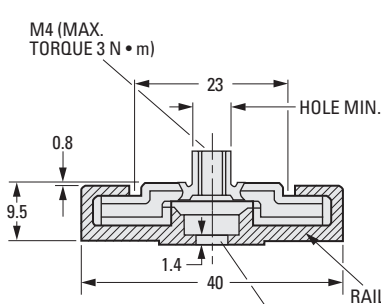
-40°C to +90°C

**> SPECIFICATIONS:**

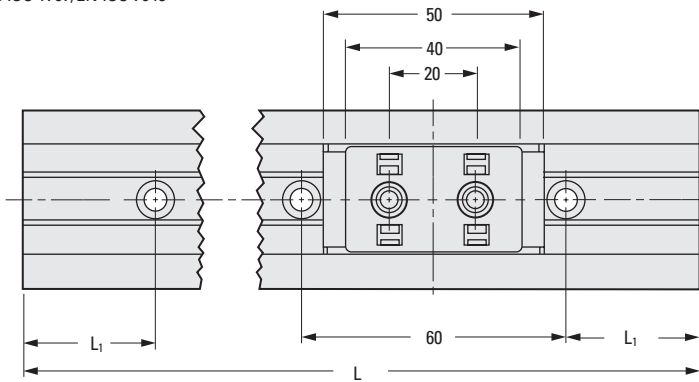
**Maximum Load:** 700 N  
**Maximum Speed:** 15 m/s

**LOAD DATA**

I = Moment of Inertia  
W<sub>b</sub> = Section Modulus  
M = Max. Torque



FOR MACHINE SCREWS M4  
DIN 7984/DIN 6912/DIN 84  
EN ISO 1707/EN ISO 7045



**METRIC COMPONENT**

Catalog Number	L Length mm	L <sub>1</sub>	Weight g
<b>Rails</b>			
S99GNRM401000	1000	20	450
S99GNRM402000	2000	40	900
S99GNRM403000	3000	30	1350
<b>Carriage Assembly</b>			
S99GNCM40502	—	—	30

I  
R  
T  
1  
2  
3  
4  
5  
6  
7  
8  
9  
10  
11  
12  
13  
14  
15  
16