

LINEAR GUIDE SYSTEM • LOW PROFILE SIZE 80

SDP/SI

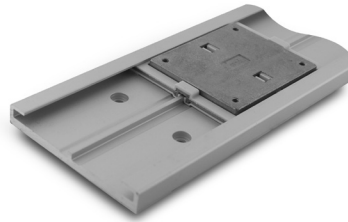
HIGH-LOAD APPLICATIONS
REPLACEABLE GLIDE PADS
LOW FRICTION

PHONE: 516.328.3300 • FAX: 516.326.8827 • WWW.SDP-SI.COM



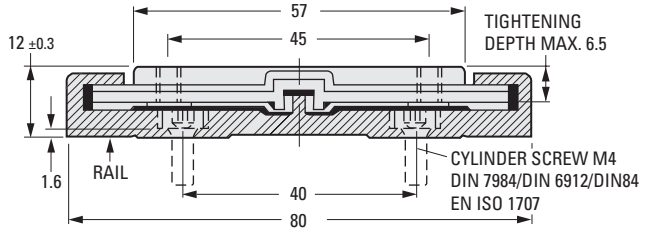
► MATERIAL:

Rails - Anodized Aluminum
Carriage Assembly - Zinc, Chromated and
J® Polymer Pads

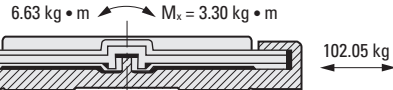


► SPECIFICATIONS:

Maximum Load - 50 N
Maximum Speed - 15 m/s
Operating Temperature: -40°C to +90°C



102.05 kg
 $I = 2900 \text{ mm}^4$
 $W_b = 380 \text{ mm}^3$
 $M_y = 1.52 \text{ kg} \cdot \text{m}$
 $M_z = 1.52 \text{ kg} \cdot \text{m}$

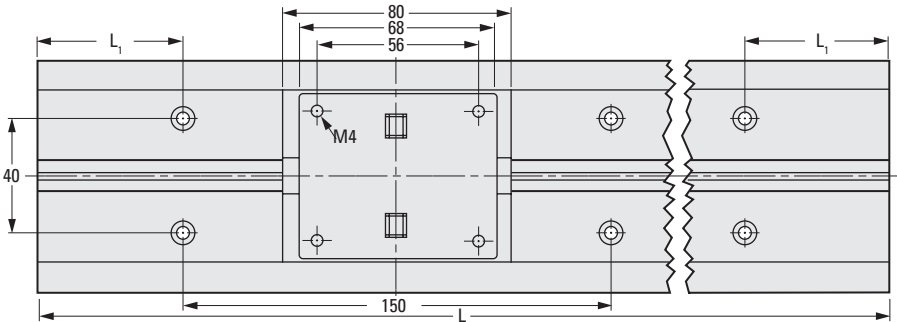


LOAD DATA

I = moment of Inertia
 W_b = Section Modulus
 M = Maximum Torque



| Catalog Number | Weight g |
|-------------------|----------|
| Carriage Assembly | |
| S99GNCM80802 | 100 |



METRIC COMPONENT

| Catalog Number | L Length mm | L ₁ | Weight g |
|----------------|-------------|----------------|----------|
| Rails | | | |
| S99GNRM800990 | 990 | 45 | 1128.6 |
| S99GNRM801980 | 1980 | 90 | 2257.2 |
| S99GNRM802970 | 2970 | 60 | 3385.8 |