

TWR TEMPERATURE SWITCH FOR LIQUIDS



Flow
Pressure
Level
Temperature
measurement
monitoring
control

T1



- Simple Installation
- Position Independent
- Brass or SS Construction
- Optional Signal Light
- Maximum Temperature: 250°F



USA

KOBOLD Instruments Inc.
1801 Parkway View Drive
USA-Pittsburgh, PA 15205
☎ +1 412-788-2830
Fax +1 412-788-4890
E-mail: info@koboldusa.com

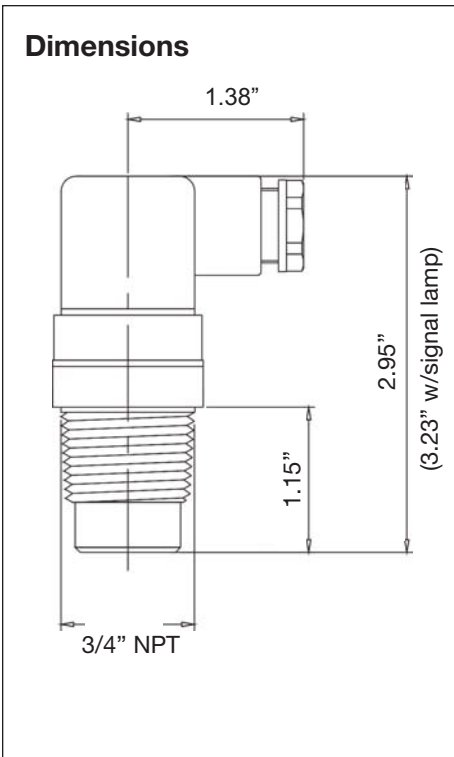


CANADA

KOBOLD Instruments Canada Inc.
9A Aviation
Pointe-Claire, QC H9R 4Z2
☎ +1 514-428-8090
Fax +1 514-428-8899
E-mail: kobold@kobold.ca

Visit KOBOLD Online at
www.kobold.com

Model:
TWR



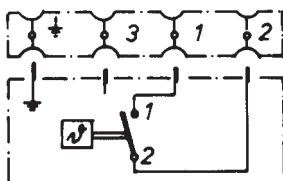
Kobold's TWR temperature switch is used to provide thermally triggered switching functions for liquids in pipe systems and containers. Individually it can provide temperature alarm features to, for example, insure process compliance with maximum or minimum limits. Pairs of TWR's can be chosen to provide wide hysteresis (deadband) thermostatic control function to control heating and cooling equipment.

The TWR is available in brass or stainless steel and has 3/4" NPT fittings for direct installation into pipes or reservoirs.

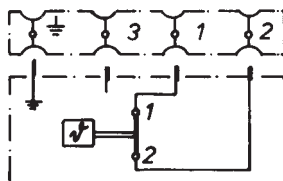
The contact operates at a preset switchpoint. The switchpoint is factory set, but selectable in 5°C increments between 30°C and 50°C and 10°C increments between 50°C and 120°C. The contacts are available in normally open (N/O) and normally closed (N/C) configurations.

Electrical connection to the TWR is achieved via a NEMA 4 plug. The plug is optionally available with an integrated LED signal light. this gives visual indication of switch condition.

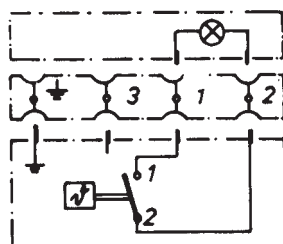
Connection diagram



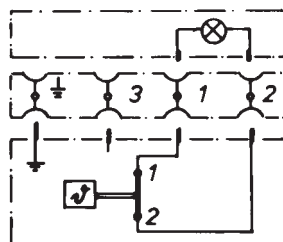
Contact N/O



Contact N/C



Contact N/O with LED/GLP



Contact N/C with LED/GLP

Special Features

- Simple Installation
- Position Independent
- Brass or SS Construction
- N/C or N/O SPST Contacts
- Optional Signal Light
- Maximum Temperature: 250°F

Specifications

Switchpoint Accuracy: ±9°F (5°C)
Hysteresis: 15-20°C (27-37°F)

Max. Temp: 120°C (250°F)

Max. Pressure: 230 PSIG

Housing: Brass or 304 SS

Fittings: 3/4" NPT

Contacts:

Function: N/C or N/O
 Rating: 220 VAC, 2 A, 12 VA

Switch Point Options in °C (°F)

Select when ordering:

- 30 (86), 35 (95)
- 40 (104), 45 (113)
- 50 (122), 60 (140)
- 70 (158), 80 (176)
- 90 (194), 100 (212)
- 110 (230), 120 (248)

Protection: NEMA 4X/IP65

Order Numbers			
Contact	Part Number		Options Add to Part Number
	Brass	SS	
N/O	TWR-5101	TWR-5201	Signal Light -LED (24 VDC) -GLP (110 VAC)
N/C	TWR-5102	TWR-5202	