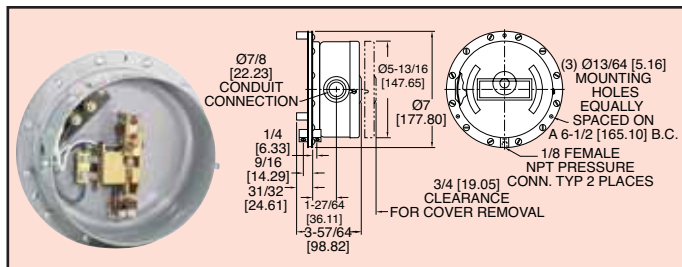


Series
PQ

Ultra Sensitive Pressure Switches

Large Diaphragm, Magnetic Mercury Switch



An ultra sensitive pressure switch, Series PQ is designed for use on air or non-corrosive gas applications. Large diaphragm operates special magnetic mercury switch. Operating point is adjustable over entire range. Unit is also available in weatherproof or explosion-proof housing.

MODELS

Model Number	Operating Range Inches w.c. (kPa)	Approx. Mid-Range Deadband in. w.c. (Pa)	Maximum Surge Pressure in. w.c. (kPa)
PQ-3-X1	0-0.1 (0-.025)	0.1 (25)	1.0 (.25)
PQ-3-X2	0.1-1.0 (.025-.25)	0.02 (5)	10.0 (2.5)
PQ-3-X2.6	0.1-6.0 (.025-1.5)	0.02 (5)	10.0 (2.5)
PQ-3-X3	1.0-30 (.25-7.5)	0.15 (37)	60.0 (15)
PQ-3-X4	0-0.1(vac.) (0-.025)	0.01 (2.5)	1.0 (.25)
PQ-3-X5	0.1-1.0 (vac.) (.025-.25)	0.15 (37)	10.0 (2.5)
PQ-3-X6	1.0-30 (vac.) (.25-7.5)	0.15 (37)	60.0 (15)

SPECIFICATIONS

Wetted Materials: Nylon reinforced Buna-N, steel, brass, and aluminum.

Temperature Limits: -10 to 180°F (-23 to 82°C).

Pressure Limit: See model chart.

Enclosure Rating: General purpose. Weatherproof and explosion-proof optional.

Switch Type: SPST mercury switch. Models shown close on increase of pressure or decrease of vacuum. Replace "-3" with "-2" in model number for open on increase of pressure or decrease of vacuum.

Electrical Rating: 0.3A @ 120 VAC, 0.15A @ 240 VAC, 0.9A @ 24 VAC, 0.15A @ 120 VDC, 0.07A @ 240 VDC, 0.45A @ 24 VDC.

Electrical Connections: Screw terminal.

Conduit Connection: 7/8" (22.23 mm) hole for 1/2" (12.7 mm) conduit hub.

Process Connection: 1/8" female NPT.

Mounting Orientation: Vertical, vibration free.

Set Point Adjustment: Internal screw.

Weight: General purpose: 4.5 lb (2 kg).

Deadband: See model chart.

Agency Approvals: UL & CSA.