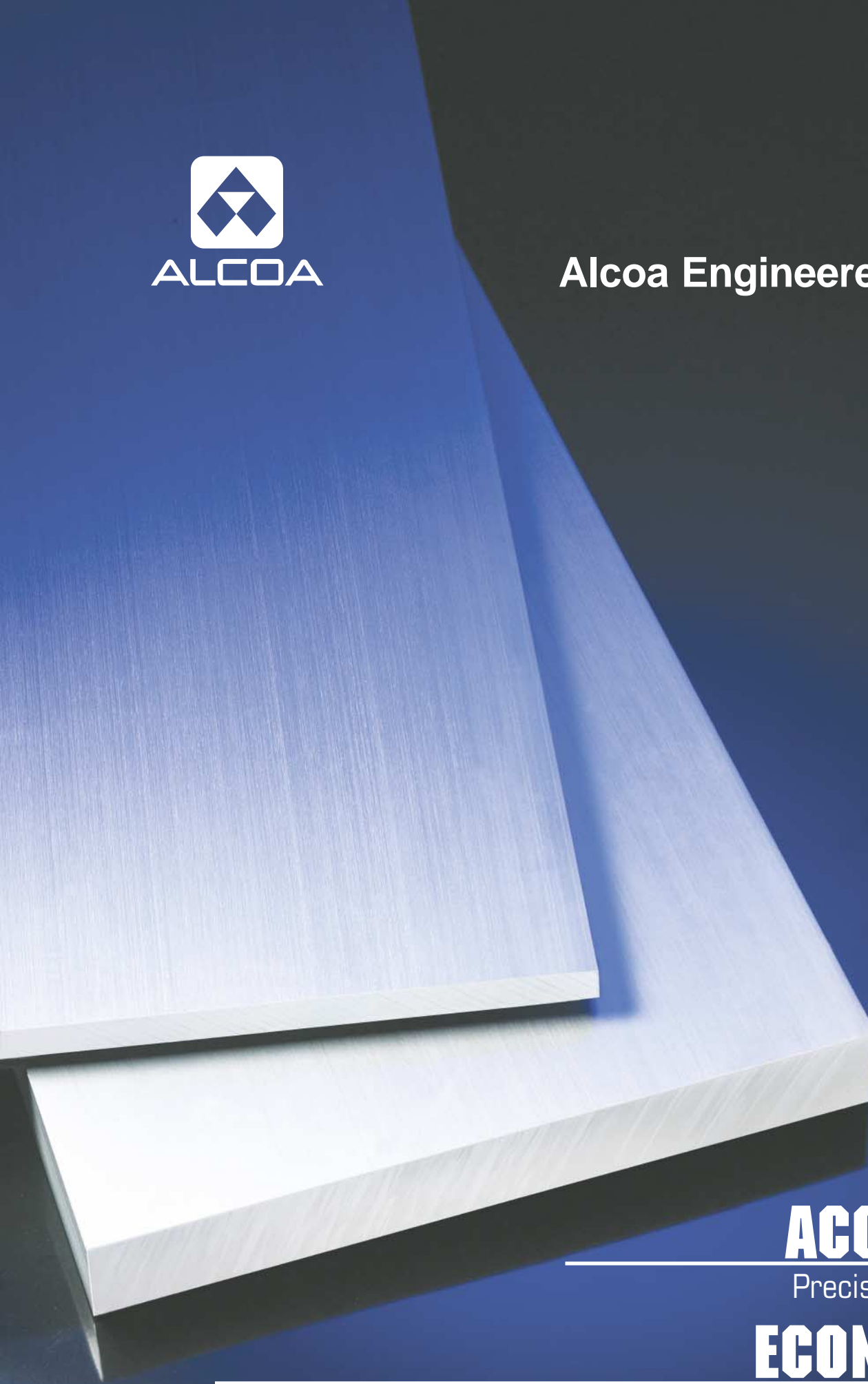




ALCOA

Alcoa Engineered Products



ACC-U-PLATE[®]

Precision Performance

ECON-O-PLATE[®]

Proven Value

Rolled Plate Performance with Extruded Bar Value

ACC-U-PLATE® and ECON-O-PLATE® represent exceptional value in wide width, close tolerance, high performance aluminum extruded bar. Complementing their attractive, corrosion-resistant finish, these products combine tight dimensional control with elevated mechanical properties to deliver excellent machining characteristics. Their lower cost, ready availability and wide choice of sizes make them cost-saving alternatives to higher priced rolled plate.

They are ideally suited for:

- Molds
- Tools
- Structural Supports
- Machine Components
- Gauges
- Dies
- Jigs and Fixtures
- Bases and Housings

Both ACC-U-PLATE and ECON-O-PLATE are available direct from Alcoa and select metal service centers.

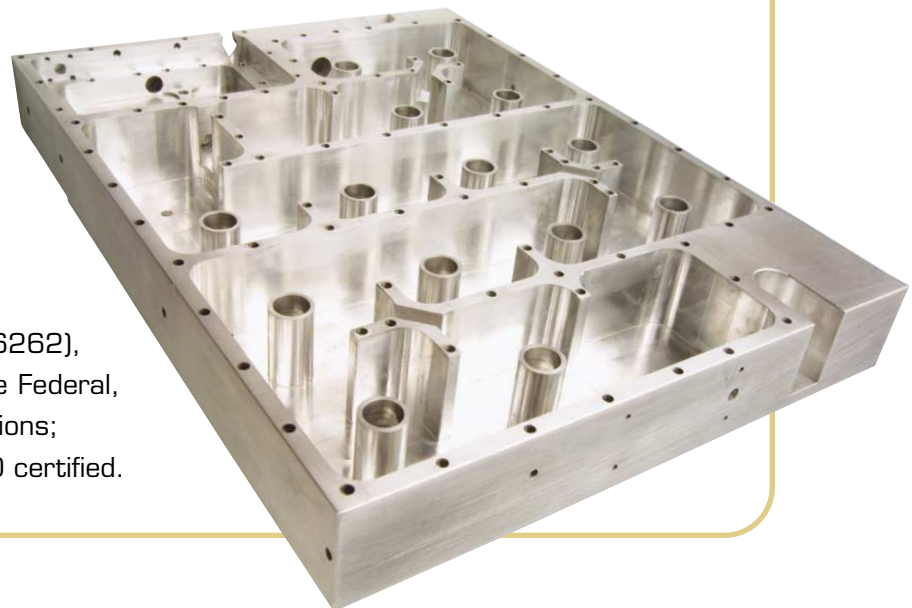
ACC-U-PLATE® Precision Performance

ACC-U-PLATE is the closest tolerance, highest quality extruded aluminum bar in the industry. It offers the minimum mechanical properties of higher priced 6061 rolled plate, tight thickness tolerances (all on the plus side of nominal) and the best flatness of any extruded bar.

In addition to its high physical and mechanical properties, stress-relieved ACC-U-PLATE has the dimensional stability needed for excellent machining of precision parts. Proven in high-speed production environments, this innovative product reduces machining time and extends tool life with fewer rejects and less waste, as compared to rolled plate.

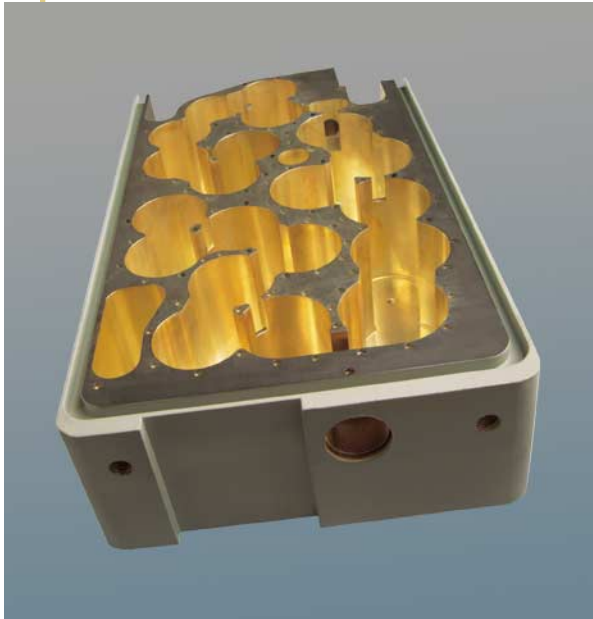
Lower acquisition cost and high performance properties make ACC-U-PLATE the best "total value" product for wide bar requirements.

- Tightest tolerances and best flatness of any extruded bar
- Minimum ultimate tensile strength, minimum yield strength, and minimum elongation equal to rolled plate
- Surface finish of 90 micro-inches, maximum
- Available sizes: (metric sizes also available)
Width: 8.000" to 18.000"
Thickness:
Alloy 6061: 0.250" to 4.000"
Alloy 6262: 0.500" to 4.000"
Standard 12' lengths
- Certified to ASTM B 221 (alloys 6061 and 6262), ASME SB 221 (alloy 6061) and to applicable Federal, Military and Aluminum Association specifications; producing plants are BS EN ISO 9001;2000 certified.



ECON-O-PLATE®

The Most Cost-Efficient Alternative to Rolled Plate



ECON-O-PLATE brings unmatched economy to close tolerance extruded aluminum bar. It was specifically developed as a cost-saving alternative to rolled plate, offering closer flatness tolerances than standard extruded bar, plus minimum yield strength and elongation equivalent to 6061 rolled plate.

Since ECON-O-PLATE is stress relieved in T6511 temper, its residual stresses are minimized, leading to improved machinability. The choice of available alloys and tempers make the product ideal for either machining or non-machining applications, such as bending and forming. Consult Alcoa for recommended special forming tempers that are available.

Storage, handling and processing costs are reduced with the use of ECON-O-PLATE. It is available in more than 165 standard sizes (custom sizes supplied on special request), so sawing-to-width can be completely eliminated, reducing waste and processing time. This attractive combination of properties and features makes ECON-O-PLATE the smart choice to satisfy wide bar requirements at a significantly lower cost.

- Minimum yield strength and elongation equivalent to 6061 rolled plate
- Better flatness than standard extruded bar
- Shorter lead time, lower mill quantity per item
- Available sizes:
 - Width: 6.000" to 19.000"
 - Thickness: 0.250" to 4.000"
 - Standard 12' lengths
- Certified to ASTM B 221 (alloys/tempers 6061-T6, -T6511 and 6262-T6, -T6511) and to applicable Federal, Military and Aluminum Association specifications; producing plants are BS EN ISO 9001;2000 certified.



COMPARATIVE WIDTH TOLERANCE (INCHES)

Width (inches)	Standard Tolerance Extruded Bar	ECON-O-PLATE	ACC-U-PLATE ¹
6.000 — 7.999	+/- .054	+/- .054	—
8.000 — 9.999	+/- .067	+/- .067	+ .108
10.000 — 11.999	+/- .074	+/- .074	+ .148
12.000 — 13.999	+/- .084	+/- .084	+ .168
14.000 — 15.999	+/- .094	+/- .094	+ .188
16.000 — 17.999	+/- .104	+/- .104	+ .208
18.000 — 19.999	+/- .114	+/- .114	+ .222

¹ ACC-U-PLATE tolerances are on plus side

FLATNESS TOLERANCES (DEVIATION FROM FLAT IN INCHES)

	Surface width / length	ECON-O-PLATE	ACC-U-PLATE
Longitudinal Flatness	In any 2 Ft. or less	.150"	.060"
Longitudinal Flatness	Up to 6 Ft.	.450"	.100"
Transverse Flatness	Over full width (inch/inch)	.004 (inch/inch) ¹	.0025 (inch/inch) ¹
Flatness for Sawed or Sheared Rolled Plate - T651 temper			
	Thickness	Longitudinal Flatness	
In any 6 Ft. or less Span	.250" to 3.000"	0.188 in any 6 ft (.125" if less than 6 ft)	
In any 6 Ft. Span	3.001" to 8.000"	0.125 in any 6 ft or less	
Shortspan Flatness			
Span of 2 Ft. or Less	.250" to .624"	0.100	
	.625" to 8.000"	0.075	

¹ Transverse flatness does not apply to one inch increments. For ACC-U-PLATE transverse tolerance applies to .250 thickness and above. (Tolerances to be negotiated for other sizes.)

CHEMICAL ANALYSIS — 6061 AND 6262 ALLOYS

ECON-O-PLATE and ACC-U-PLATE EXTRUDED ALUMINUM BARS ARE PRODUCED IN 6061 AND 6262 ALLOYS. 6061 is one of the most versatile and widely used alloys in the 6000 Series of heat treated alloys. As a standard structural alloy, 6061 is popular for medium to high strength requirements and has good toughness characteristics. Alloy 6061 has excellent corrosion resistance to atmospheric conditions. This alloy also offers good mechanical, chemical and electrochemical finishing characteristics and responds well to anodizing. Alloy 6262 has a similar chemistry to 6061 except small additions of Pb and Bi are present to enhance machineability.

Alloy	Elements										Others Each	Others Total	Aluminum
	Si	Fe	Cu	Mn	Mg	Cr	Zn	Ti	Pb	Bi			
6061	.40-.8	.7	.15-.40	.15	.8-1.2	.04-.35	.25	.15	—	—	.05	.15	Remainder
6262	.40-.8	.7	.15-.40	.15	.8-1.2	.04-.14	.25	.15	.40-.7	.40-.7	.05	.15	Remainder
	Density			Liquidus Temperature					Solidus Temperature				
6061	0.098 lb./in. ³			1,206°F					1,080°F				
6262	0.098 lb./in. ³			1,204°F					1,078°F				

Reference: ASM Metals Handbook , Tenth Edition, Volume 2. Chemical composition in weight percent unless shown as a range.

COMPARATIVE MECHANICAL PROPERTIES

Property		ECON-O-PLATE 6061-T6, -T6511 ¹ 6262-T6, -T6511	ACC-U-PLATE 6061-T6, -T6511 6262-T6, -T6511	ROLLED PLATE 6061-T651
Max. Flatness in 2' or less span		.150"	.060"	.075-.100" ²
Min. Ultimate Tensile (ksi)	Longitudinal direction	38.0	42.0 ³	42.0
Min. Yield Tensile (ksi)	Longitudinal direction	35.0	35.0	35.0
Min. Elongation %	Longitudinal direction	10	10	6-9 (based on thickness)
Surface Finish (micro-inch) max.		125 (6061) 150 (6262)	90 (6061) 150 (6262)	NA
Typical Hardness Brinell (500Kg load, 10mm ball)		95	95	95
Typical Ultimate Shear Strength (ksi)		30	30	30
Standard Specifications		ASTM B221 ASME SB 221	ASTM B221 ASME SB 221	ASTM B209 ASTM SB 209

¹ Alcoa special tempers for ECON-O-PLATE are available upon special request, i.e. T6511H, T6S2, T6S10 etc.

² Short Span Flatness for T651 temper

³ Minimum tensile strength for less than .375" thickness ACC-U-PLATE is 38.0 ksi

COMPARATIVE THICKNESS TOLERANCES (INCHES)

Thickness	Standard Tolerance Bar (Extruded)		ECON-O-PLATE (Extruded)		ACC-U-PLATE ¹ (Extruded)	Rolled Plate	
	<10" width	10" & greater width	6" to 9.999" width	10" & greater width	8" & greater width	Thickness	Tolerance
.250-.374	+/- .008	+/- .016	+/- .008	+/- .016	+ .016 ²	.249-.315	+/- .012
.375-499	+/- .008	+/- .016	+/- .008	+/- .016	+ .016	.316-.394	+/- .015
.500-.749	+/- .009	+/- .017	+/- .009	+/- .017	+ .022	.395-.630	+/- .023
.750-.999	+/- .010	+/- .019	+/- .010	+/- .019	+ .030	.631-.984	+/- .031
1.000-1.499	+/- .012	+/- .024	+/- .012	+/- .024	+ .038	.985-1.575	+/- .039
1.500-1.625	+/- .014	+/- .034	+/- .014	+/- .034	+ .038	1.576-2.362	+/- .055
1.626-1.999	+/- .024	+/- .034	+/- .024	+/- .034	+ .048	2.363-3.150	+/- .075
2.000-2.375	+/- .024	+/- .034	+/- .024	+/- .034	+ .054	—	—
2.376-3.000	+/- .024	+/- .034	+/- .024	+/- .034	+ .074	—	—
3.001-3.500	+/- .024	+/- .034	+/- .024	+/- .034	+ .100	3.151-3.937	+/- .0100
3.501-3.999	+/- .024	+/- .034	+/- .024	+/- .034	+ .100	—	—
4.000-5.999	+/- .024	+/- .034	+/- .024	+/- .034	+ .130	3.938-6.299	+/- .0130

¹ ACC-U-PLATE tolerances are on plus side

² Thickness tolerance for ACC-U-PLATE widths 12.000" and over is +.024"/-.000"

Alcoa Engineered Products

Sales Office Location

53 Pottsville Street
Cressona, PA 17929
PHONE: 800-233-3165
FAX: 800-252-4646

Headquarters

8550 West Bryn Mawr Avenue - 10th Floor
Chicago, IL 60631
PHONE: 773-380-2510
FAX: 773-380-6320

www.alcoa.com



Alcoa Engineered Products

ACC-U-PLATE®

Tightest Tolerance Extruded Aluminum Bar

Standard Sizes (inches)

THICKNESS X WIDTH (")	WT./FT.	SECTION NO.	THICKNESS X WIDTH (")	WT./FT.	SECTION NO.
.250 (+.016) X 8.000 (+.108)	2.444	510969*	1.125 (+.038) X 8.000 (+.108)	10.835	518705
.250 (+.016) X 10.000 (+.148)	3.056	510970*	1.125 (+.038) X 12.000 (+.168)	16.257	514059
.250 (+.016) X 12.000 (+.168)	3.667	510971*	1.125 (+.038) X 14.000 (+.168)	18.961	514060
.312 (+.025) X 12.000 (+.168)	4.611	514124	1.125 (+.038) X 16.000 (+.208)	21.665	517333
.375 (+.016) X 8.000 (+.108)	3.637	510972	1.125 (+.038) X 18.000 (+.228)	24.369	515788
.375 (+.016) X 10.000 (+.148)	4.549	510973	1.250 (+.038) X 8.000 (+.108)	12.020	510990
.375 (+.016) X 12.000 (+.168)	5.457	510974	1.250 (+.038) X 10.000 (+.148)	15.034	510991
.375 (+.016) X 14.000 (+.188)	6.348	510624	1.250 (+.038) X 12.000 (+.168)	18.034	510992
.375 (+.016) X 16.000 (+.208)	7.386	518672	1.250 (+.038) X 13.000 (+.168)	19.526	514556
.500 (+.022) X 8.000 (+.108)	4.840	510975	1.250 (+.038) X 14.000 (+.188)	21.033	510630
.500 (+.022) X 10.000 (+.148)	6.054	510976	1.250 (+.038) X 15.000 (+.188)	22.525	514790
.500 (+.022) X 12.000 (+.168)	7.262	510977	1.250 (+.038) X 16.000 (+.208)	24.033	515523
.500 (+.022) X 14.000 (+.188)	8.470	510625	1.250 (+.038) X 18.000 (+.228)	27.033	515789
.500 (+.022) X 16.000 (+.208)	9.753	518673	1.375 (+.038) X 8.000 (+.108)	13.203	516407
.625 (+.022) X 8.000 (+.108)	6.023	510978	1.375 (+.038) X 12.000 (+.168)	19.817	514061
.625 (+.022) X 10.000 (+.148)	7.535	510979	1.375 (+.038) X 14.000 (+.188)	23.105	514062
.625 (+.022) X 12.000 (+.168)	9.038	510980	1.375 (+.038) X 16.000 (+.208)	26.400	517334
.625 (+.022) X 14.000 (+.188)	10.541	510626	1.375 (+.038) X 18.000 (+.228)	29.694	515791
.625 (+.022) X 16.000 (+.208)	12.045	518674	1.500 (+.038) X 8.000 (+.108)	14.387	510993
.750 (+.030) X 8.000 (+.108)	7.245	510981	1.500 (+.038) X 10.000 (+.148)	17.995	510994
.750 (+.030) X 10.000 (+.148)	9.063	510982	1.500 (+.038) X 12.000 (+.168)	21.587	510995
.750 (+.030) X 12.000 (+.168)	10.871	510983	1.500 (+.038) X 13.000 (+.168)	23.373	514802
.750 (+.030) X 14.000 (+.188)	12.680	510627	1.500 (+.038) X 14.000 (+.188)	25.177	510761
.750 (+.030) X 16.000 (+.208)	14.488	515521	1.500 (+.038) X 15.000 (+.188)	26.963	514791
.750 (+.030) X 18.000 (+.228)	16.296	518675	1.500 (+.038) X 16.000 (+.208)	28.767	515524
.875 (+.030) X 8.000 (+.108)	8.430	510984	1.500 (+.038) X 17.992 (+.208)	32.326	533336
.875 (+.030) X 10.000 (+.148)	10.544	510985	1.500 (+.038) X 18.000 (+.228)	32.358	515459
.875 (+.030) X 12.000 (+.168)	12.648	510986	1.625 (+.038) X 12.000 (+.168)	23.363	514063
.875 (+.031) X 14.000 (+.188)	14.760	510628	1.625 (+.038) X 13.000 (+.168)	25.296	514555
.875 (+.030) X 16.000 (+.208)	16.964	515522	1.625 (+.038) X 14.000 (+.188)	27.249	514064
.875 (+.030) X 18.000 (+.228)	18.959	518704	1.625 (+.038) X 16.000 (+.208)	31.135	517335
1.000 (+.038) X 8.000 (+.108)	9.651	510987	1.750 (+.048) X 8.000 (+.108)	16.803	510996
1.000 (+.038) X 9.000 (+.108)	10.850	511927	1.750 (+.048) X 10.000 (+.148)	21.016	510997
1.000 (+.038) X 10.000 (+.148)	12.072	510988	1.750 (+.048) X 12.000 (+.168)	25.210	510998
1.000 (+.038) X 12.000 (+.168)	14.481	510989	1.750 (+.048) X 13.000 (+.168)	27.296	514554
1.000 (+.038) X 13.000 (+.168)	15.680	514801	1.750 (+.048) X 14.000 (+.188)	29.404	510631
1.000 (+.038) X 14.000 (+.188)	16.890	510629	1.750 (+.048) X 15.000 (+.188)	31.490	514793
1.000 (+.038) X 15.000 (+.188)	18.088	514789	1.750 (+.048) X 16.000 (+.208)	33.596	515525
1.000 (+.038) X 16.000 (+.208)	19.298	515175	1.771 (+.038) X 14.881 (+.188)	31.538	533633
1.000 (+.038) X 18.000 (+.228)	21.707	515458			

AVAILABLE IN 6061 AND 6262 ALLOYS; STANDARD 12' LENGTHS.

*Does not meet ACC-U-PLATE® mechanical properties.

(continued on back)



ALCOA

Alcoa Engineered Products

ACC-U-PLATE®

Tightest Tolerance Extruded Aluminum Bar

Standard Sizes (inches)

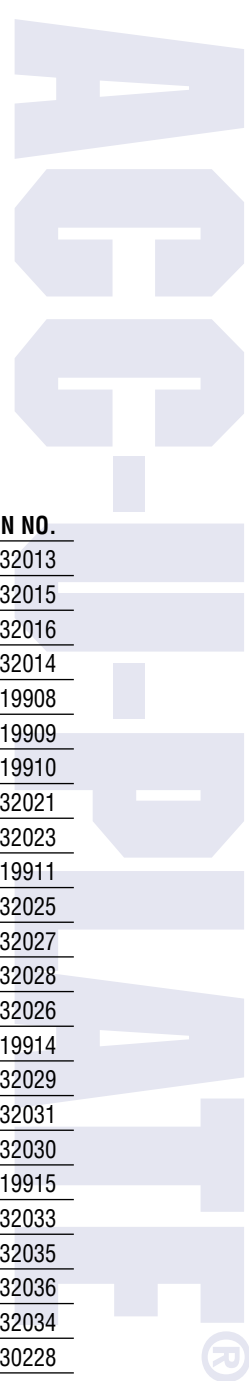
THICKNESS X WIDTH (")	WT./FT.	SECTION NO.
2.000 (+.054) X 8.000 (+.108)	19.198	510999
2.000 (+.054) X 10.000 (+.148)	24.014	511000
2.000 (+.054) X 12.000 (+.168)	28.805	511001
2.000 (+.054) X 13.000 (+.168)	31.189	514553
2.000 (+.054) X 14.000 (+.188)	33.597	510632
2.000 (+.054) X 15.000 (+.188)	35.980	514792
2.000 (+.054) X 16.000 (+.208)	38.388	515176
2.250 (+.054) X 8.000 (+.108)	21.567	514017
2.250 (+.054) X 10.000 (+.148)	26.976	514018
2.250 (+.054) X 13.000 (+.168)	35.035	514552
2.250 (+.054) X 14.000 (+.188)	37.740	514558
2.250 (+.054) X 16.000 (+.208)	43.123	515737
2.250 (+.054) X 16.250 (+.208)	44.066	532486
2.375 (+.054) X 13.000 (+.168)	36.959	514551
2.375 (+.054) X 14.000 (+.188)	39.812	514557
2.500 (+.074) X 8.000 (+.188)	24.149	514019
2.500 (+.074) X 10.000 (+.188)	30.116	514020
2.500 (+.074) X 12.000 (+.168)	36.083	515093
2.500 (+.074) X 14.000 (+.188)	42.050	515092
2.500 (+.074) X 16.000 (+.208)	48.045	515526
3.000 (+.074) X 8.000 (+.108)	28.765	518714
3.000 (+.074) X 10.000 (+.148)	35.979	515095
3.000 (+.074) X 12.000 (+.168)	43.158	515096
3.000 (+.074) X 14.000 (+.188)	51.075	515094
3.000 (+.074) X 16.000 (+.208)	57.516	515527
3.500 (+.100) X 8.000 (+.108)	33.624	518715
3.500 (+.100) X 10.000 (+.148)	42.057	516402
3.500 (+.100) X 12.000 (+.168)	50.448	516403
3.500 (+.100) X 14.000 (+.188)	58.840	516404
3.500 (+.100) X 16.000 (+.208)	67.231	518716
4.000 (+.130) X 8.000 (+.108)	38.502	518717
4.000 (+.130) X 10.000 (+.148)	48.158	518718
4.000 (+.130) X 12.000 (+.168)	57.770	516405
4.000 (+.130) X 14.000 (+.188)	67.375	516406

Standard Sizes (metric)

THICKNESS X WIDTH (mm)	WT./FT.	SECTION NO.
16mm (+.559) X 348mm (+4.267)	10.375	532013
16mm (+.559) X 363mm (+4.775)	10.827	532015
16mm (+.559) X 378mm (+4.775)	11.271	532016
16mm (+.559) X 393mm (+4.775)	11.708	532014
20mm (+.762) X 457mm (+5.283)	17.079	519908
25mm (+.762) X 457mm (+5.283)	21.270	519909
30mm (+.965) X 457mm (+5.283)	25.542	519910
35mm (+.965) X 348mm (+4.267)	22.631	532021
35mm (+.965) X 378mm (+4.775)	24.584	532023
35mm (+.965) X 457mm (+5.283)	29.729	519911
40mm (+.965) X 348mm (+4.267)	25.824	532025
40mm (+.965) X 363mm (+4.775)	26.948	532027
40mm (+.965) X 378mm (+4.775)	28.054	532028
40mm (+.965) X 393mm (+4.775)	29.161	532026
40mm (+.965) X 410mm (+5.283)	30.451	519914
45mm (+1.219) X 348mm (+4.267)	29.099	532029
45mm (+1.219) X 363mm (+4.267)	30.366	532031
45mm (+1.219) X 393mm (+4.775)	32.859	532030
45mm (+1.219) X 410mm (+5.283)	34.306	519915
50mm (+1.372) X 348mm (+4.267)	32.341	532033
50mm (+1.372) X 363mm (+4.267)	33.734	532035
50mm (+1.372) X 378mm (+4.775)	35.118	532036
50mm (+1.372) X 393mm (+4.775)	36.519	532034
50mm (+1.372) X 410mm (+5.283)	38.123	530228
50mm (+1.372) X 455mm (+5.283)	42.234	532037
55mm (+1.372) X 348mm (+4.267)	35.535	532038
55mm (+1.372) X 363mm (+4.775)	37.090	532039
55mm (+1.372) X 378mm (+4.775)	38.611	532040
55mm (+1.372) X 393mm (+4.775)	40.126	532041
55mm (+1.372) X 410mm (+5.283)	41.888	530540
60mm (+1.372) X 348mm (+4.267)	38.728	532042
60mm (+1.372) X 363mm (+4.775)	40.423	532043
60mm (+1.372) X 378mm (+4.775)	42.081	532044
60mm (+1.372) X 393mm (+4.775)	43.732	532045
60mm (+1.372) X 410mm (+5.283)	45.645	530229
65mm (+1.397) X 363mm (+4.775)	43.755	532046
65mm (+1.397) X 393mm (+4.775)	47.052	532047
70mm (+1.397) X 363mm (+4.775)	47.071	532048
70mm (+1.397) X 393mm (+4.775)	50.926	532049
80mm (+1.397) X 363mm (+4.775)	53.744	532017
80mm (+1.397) X 393mm (+4.775)	58.157	532018

AVAILABLE IN 6061 AND 6262 ALLOYS; STANDARD 12' LENGTHS.

*Does not meet ACC-U-PLATE® mechanical properties.





ALCOA

Alcoa Engineered Products

ECON-O-PLATE®

Close Tolerance Extruded Aluminum Bar

Standard Sizes (inches)

THICKNESS X WIDTH (")	WT./FT.	SECTION NO.	THICKNESS X WIDTH (")	WT./FT.	SECTION NO.
.250 x 6.000	1.764	505000	.750 X 12.000	10.584	505040
.250 x 7.000	2.058	505001	.750 X 13.000	11.466	516064
.250 x 8.000	2.352	505002	.750 X 14.000	12.348	505041
.250 x 9.000	2.646	505003	.750 X 15.000	13.230	519312
.250 x 10.000	2.940	505004	.750 X 16.000	14.112	519308
.250 x 12.000	3.528	505005	.750 X 18.000	15.876	533839
.250 x 14.000	4.116	505006	.875 X 8.000	8.232	505044
.312 x 7.000	2.572	510241	.875 X 9.000	9.261	505045
.312 x 8.000	3.031	515795	.875 X 12.000	12.348	505047
.375 x 6.000	2.646	505014	.875 X 13.000	13.377	516065
.375 X 7.000	3.087	505015	.875 X 14.000	14.406	505048
.375 X 8.000	3.528	505016	.875 X 15.000	15.435	531491
.375 X 9.000	3.969	505017	.875 X 16.000	16.464	532992
.375 X 10.000	4.410	505018	1.000 x 6.000	7.056	505049
.375 X 12.000	5.292	505019	1.000 X 7.000	8.232	505050
.375 X 14.000	6.174	505020	1.000 X 8.000	9.408	505051
.500 X 6.000	3.528	505021	1.000 x 9.000	10.584	505052
.500 X 7.000	4.116	505022	1.000 x 10.000	11.760	505053
.500 X 8.000	4.704	505023	1.000 x 12.000	14.112	505054
.500 X 9.000	5.292	505024	1.000 x 13.000	15.288	516421
.500 X 10.000	5.880	505025	1.000 x 14.000	16.464	505055
.500 X 11.000	6.468	537968	1.000 x 15.000	17.640	519306
.500 X 12.000	7.056	505026	1.000 X 16.000	18.816	533196
.500 X 14.000	8.232	505027	1.000 X 17.000	19.992	533353
.500 X 16.000	9.408	517330	1.000 X 18.000	21.168	518400
.500 X 18.000	10.584	518129	1.000 X 19.000	22.344	533354
.625 X 6.000	4.410	505028	1.125 X 12.000	15.876	517207
.625 X 7.000	5.145	505029	1.125 X 12.500	16.537	517356
.625 X 8.000	5.880	505030	1.125 X 13.000	17.199	516066
.625 X 9.000	6.615	505031	1.125 X 13.500	17.860	517357
.625 X 10.000	7.350	505032	1.125 X 14.000	18.522	517337
.625 X 12.000	8.820	505033	1.125 X 15.000	19.845	519313
.625 X 13.000	9.555	519309	1.250 X 6.000	8.820	505056
.625 X 14.000	10.290	505034	1.250 X 7.000	10.290	505057
.625 X 14.567	10.707	519311	1.250 X 8.000	11.760	505058
.625 X 16.000	11.760	517332	1.250 X 9.000	13.230	505059
.629 X 16.000	11.835	531394	1.250 X 10.000	14.700	505060
.750 X 6.000	5.292	505035	1.250 X 12.000	17.640	505061
.750 X 7.000	6.174	505036	1.250 X 12.500	18.375	516067
.750 X 8.000	7.056	505037	1.250 X 13.000	19.110	517208
.750 X 9.000	7.938	505038	1.250 X 13.125	19.687	506751
.750 X 10.000	8.820	505039	1.250 X 13.500	19.845	516068

AVAILABLE IN 6061-T6, -T6511 AND 6262-T6, -T6511 ALLOYS; STANDARD 12' LENGTH.

(continued on back)



ALCOA

Alcoa Engineered Products

ECON-O-PLATE®

Close Tolerance Extruded Aluminum Bar

Standard Sizes (inches)

THICKNESS X WIDTH (")	WT./FT.	SECTION NO.
1.250 X 14.000	20.580	505062
1.250 X 15.000	22.050	519315
1.250 X 16.000	23.520	530310
1.250 X 18.000	26.460	533840
1.375 X 12.000	19.404	516720
1.375 X 12.500	20.213	519310
1.375 X 13.000	21.021	515773
1.375 X 13.500	21.830	518233
1.375 X 14.000	22.638	516717
1.375 X 15.000	24.255	519314
1.500 X 6.000	10.584	505063
1.500 X 7.000	12.348	505064
1.500 X 8.000	14.112	505065
1.500 X 10.000	17.640	505067
1.500 X 12.000	21.168	505068
1.500 X 12.500	22.050	517040
1.500 X 13.000	22.932	517209
1.500 X 13.500	23.814	517041
1.500 X 14.000	24.696	505069
1.500 X 15.000	26.460	517210
1.500 X 18.000	31.752	533841
1.625 X 12.000	22.932	516719
1.625 X 12.500	23.887	516069
1.625 X 13.000	24.843	516812
1.625 X 13.500	25.799	516070
1.625 X 14.000	26.754	516813
1.625 X 15.000	28.665	517042
1.625 X 16.000	30.576	519518
1.750 X 12.000	24.696	505075
1.750 X 12.500	25.725	515774
1.750 X 13.000	26.754	516814
1.750 X 13.500	27.783	515775
1.750 X 14.000	28.812	505076
1.750 X 15.000	30.870	516716
1.750 X 16.000	32.928	516420
1.750 X 18.000	37.044	533849
2.000 X 6.000	14.112	505077
2.000 X 7.000	16.800	505078
2.000 X 8.000	18.816	505079
2.000 X 10.000	23.520	505081
2.000 X 12.000	28.224	505082
2.000 X 12.500	29.400	515776

THICKNESS X WIDTH (")	WT./FT.	SECTION NO.
2.000 X 13.000	30.576	516718
2.000 X 13.500	31.752	515778
2.000 X 14.000	32.928	505083
2.000 X 15.000	35.280	516715
2.000 X 16.000	37.632	516419
2.125 X 16.000	39.984	533197
2.250 X 12.500	33.075	516071
2.250 X 13.000	34.700	516815
2.250 X 13.500	35.721	516816
2.250 X 14.000	37.044	514770
2.250 X 15.000	39.690	530423
2.250 X 16.000	42.336	533266
2.375 X 12.500	34.913	516073
2.375 X 13.000	36.309	516817
2.375 X 13.500	37.706	516074
2.375 X 14.000	39.102	516818
2.375 X 15.000	41.895	530422
2.375 X 16.000	44.688	533198
2.500 X 8.000	23.520	514900
2.500 X 13.000	38.222	516510
2.500 X 13.500	39.690	517043
2.500 X 14.000	41.160	517044
2.500 X 15.000	44.100	518234
2.500 X 16.000	47.040	519519
2.750 X 13.000	42.042	516416
2.750 X 13.500	43.659	516417
2.750 X 14.000	45.276	517045
2.750 X 15.000	48.510	518235
2.750 X 16.000	51.744	530311
3.000 X 13.000	45.864	516508
3.000 X 13.500	47.628	516509
3.000 X 14.000	49.392	514021
3.000 X 15.000	52.920	518236
3.000 X 16.000	56.448	516418
3.250 X 13.000	49.686	516711
3.250 X 13.500	51.597	516710
3.250 X 16.000	61.152	519520
3.500 X 14.000	57.624	530425
4.000 X 14.000	65.856	533662
4.000 X 15.000	70.560	530420
4.000 X 16.000	75.264	519521

AVAILABLE IN 6061-T6, -T6511 AND 6262-T6, -T6511 ALLOYS; STANDARD 12' LENGTH.