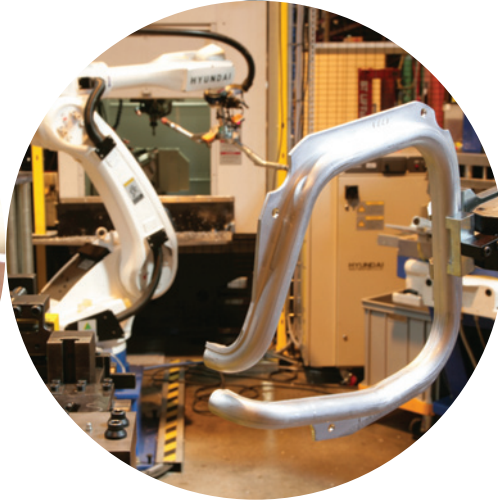
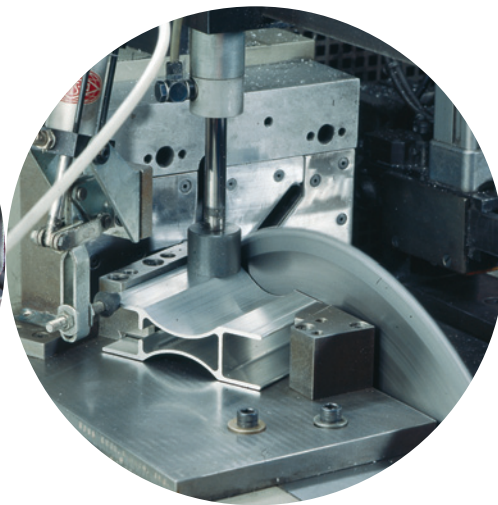
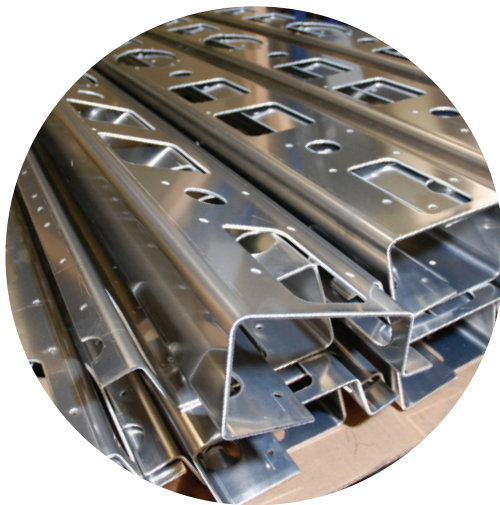




HYDRO

# We are Hydro...

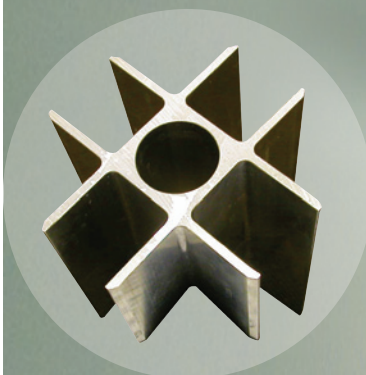
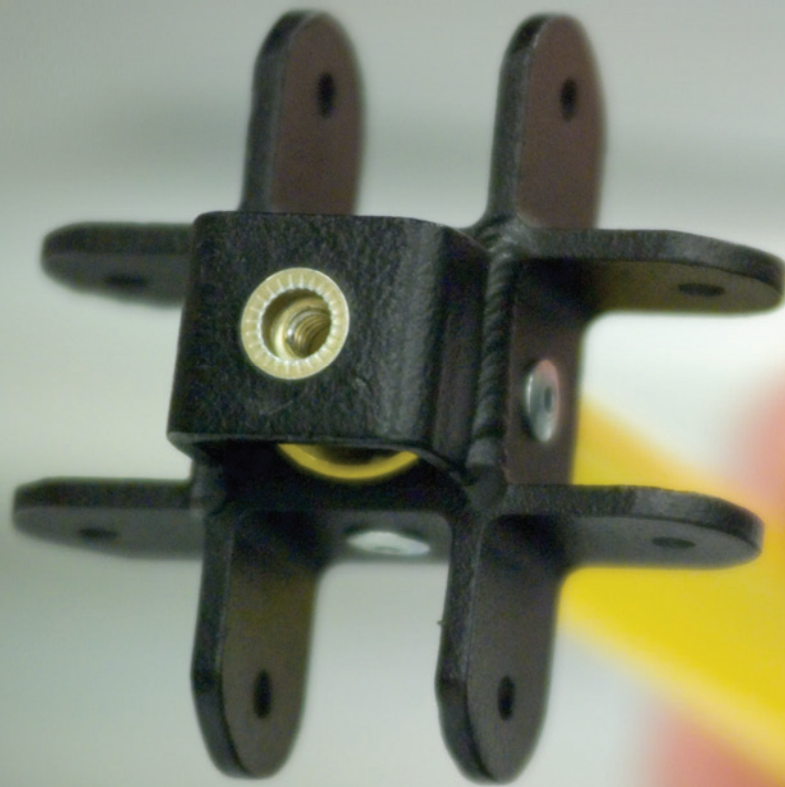
*Aluminum extrusion fabrication  
and program management solutions*





*Hydro, the extrusion technology leader, offers unmatched fabrication and program management services from a plant network which spans North America. Our highly skilled people, manufacturing “centers of excellence”, and nearshore manufacturing capabilities can give you the competitive edge.*

*We do more than just fabricate aluminum extrusion-based components. We solve manufacturing problems and help optimize your supply chain.*



*For a military/rapid deployment shelter tenting system, Hydro's extrusion-based solution replaced a flat-stamped aluminum design, reducing the number of welds from eight to two, increasing structural integrity, and reducing cost. Final components are powder coated and fully-assembled.*





# Add decades of fab experience... overnight!

**W**e have the advanced equipment and project management systems in place to handle almost any fabrication project. But, what really sets us apart is our people... their skill, experience, and knowhow... their willingness to collaborate with customers to solve challenging fabrication problems... and an uncanny ability to consistently develop innovative solutions which improve product performance, create manufacturing efficiencies, and streamline supply channels.

Grounded in the aluminum extrusion process, we can design an extrusion profile which minimizes fabrication, develop a process which reduces manufacturing steps, and help you fully exploit the benefits of using extrusions in your product. We can also procure needed parts, assemble components or complete products, and provide fulfillment and JIT delivery services.

From the initial product concept stage through delivery of finished products, the Hydro Team is committed to developing solutions to help you achieve success!

- Optimize an aluminum alloy to match your cost and performance requirements
- Simplify your product design to increase press efficiency and minimize fabrication steps (reducing cost)
- Tap Hydro's global network of technology centers to improve your product and solve difficult manufacturing issues
- Streamline your supply chain and bring your product to market faster by utilizing our "single-source" capability



[www.hydro.com/northamerica](http://www.hydro.com/northamerica)





*Most extruders offer basic fabrication services. And, so do we. But, we can also offer an unmatched range of advanced fab services, deliver extruded aluminum components with high precision and tight tolerances ready for assembly, or do the final assembly for you. Count on us for state-of-the-art fabrication for small- and large-scale components and assemblies.*





# Fabrication

*We can meet your production requirements with uncompromising quality across a wide spectrum of fab services*

All of our plants can take you extrusion to the next step of production with basic fabrication services like precision sawing, drilling, and deburring. Many of our facilities also offer leading-edge CNC machining, welding, advanced adhesive bonding, and thermal break application. You can also rely on us for more complex forming operations like stretch forming and press bending;

operations where aluminum extrusion knowledge and experience can mean the difference between success and failure.

We have the tools, systems, and fabrication experts to provide the full range of aluminum fab solutions and deliver a component ready to be incorporated in your assembly operation...or ready to ship to your customer!

- CNC machining for milling, notching, tapping, lathing, and countersinking
- High production punch/cut operations
- Close tolerance high-speed precision automatic sawing/automatic miter cutting
- Manual TIG/MIG welding
- Rotary, stretch, chain, press, and roll bending
- More than 600,000 sq. ft. of dedicated manufacturing space



[www.hydro.com/northamerica](http://www.hydro.com/northamerica)





*From sub-assembly to complete end-to-end manufacturing, we can help optimize your supply chain with world-class quality and the latest in manufacturing innovation at four dedicated manufacturing facilities in the U.S. and Mexico.*



# Complex fabrication & program management

*Solution centers of manufacturing excellence*

For products which require complex fabrication, high-level assembly, or contract manufacturing, our four manufacturing “centers of excellence” offer the most advanced equipment, well-developed production processes, and creative problem solving. We provide engineering, process design, and program management services starting at product inception through turn-key manufacturing for a wide range of industries including transportation, solar power, and consumer durables. And, we are ready to incorporate

new materials, customize equipment, expand plant capacity, and make other investments as necessary, in order to take your product to the next phase of production.

Our dedicated manufacturing plants are incubators for the development of new manufacturing technology and provide advanced solutions to our customers. We can help solve your most challenging manufacturing issues, streamline your supply chain, and help bring your product to market faster.

- Dedicated manufacturing cells
- 3-axis CNC bending and robotic TIG/MIG welding
- Aluminum sheet blanking, forming, and assembly
- Project management and product/process engineering
- Component sourcing
- Just-In-Time (JIT) manufacturing and line-sequencing capabilities
- PPAP and APQP systems in place
- Nearshore manufacturing in Mexico
- ISO 9001:2008 and ISO 14001:2004 certified facilities



[www.hydro.com/northamerica](http://www.hydro.com/northamerica)



*Metal support, access to our global network of technical resources, and the willingness to share our knowledge with customers can streamline your supply lines and help make your products better.*







# Unparalleled customer support

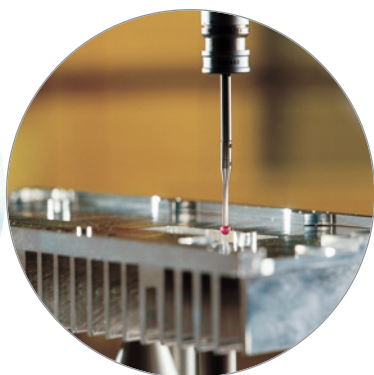
*Technical resources and knowledge sharing to help ensure your success*

**O**ur **Metal Management Program** can help optimize the “metal” side of your program from start to finish. Our engineers can assist with alloy selection, while our global trading desk can help you manage your future metal needs and minimize the impact of normal market volatility. With our network of casthouses, we can assure metal availability... and assure the high recycled content that many customers demand. Finally, we can help you realize optimal value from your aluminum process scrap through our scrap buy-back programs.

To support our plants, we have a **global network of Technology Centers**, including one in Holland, MI, where we conduct aluminum-extrusion related research and assist with resolving customer product and manufacturing issues.

Our **Extrusion Academies & Workshops** are interactive educational sessions, developed for designers, engineers, and managers who currently use aluminum extrusions or could benefit from the integration of aluminum in their design. Topics include the extrusion process, profile design, alloy selection, bending, advanced welding techniques, etc.

And, our **Extrusion Design Manual** is the culmination of knowledge gained from over 50 years of experience in aluminum extrusion and is our continued commitment to aluminum extrusion research. It is an invaluable source of information and inspiration for anyone involved in the design and production of products that could utilize aluminum extrusions... and it's absolutely free!



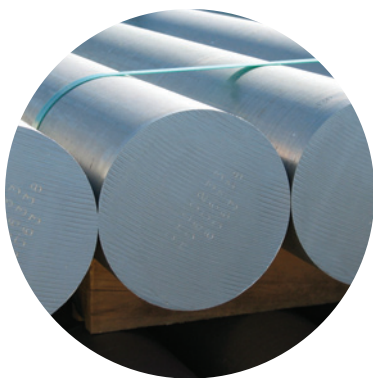
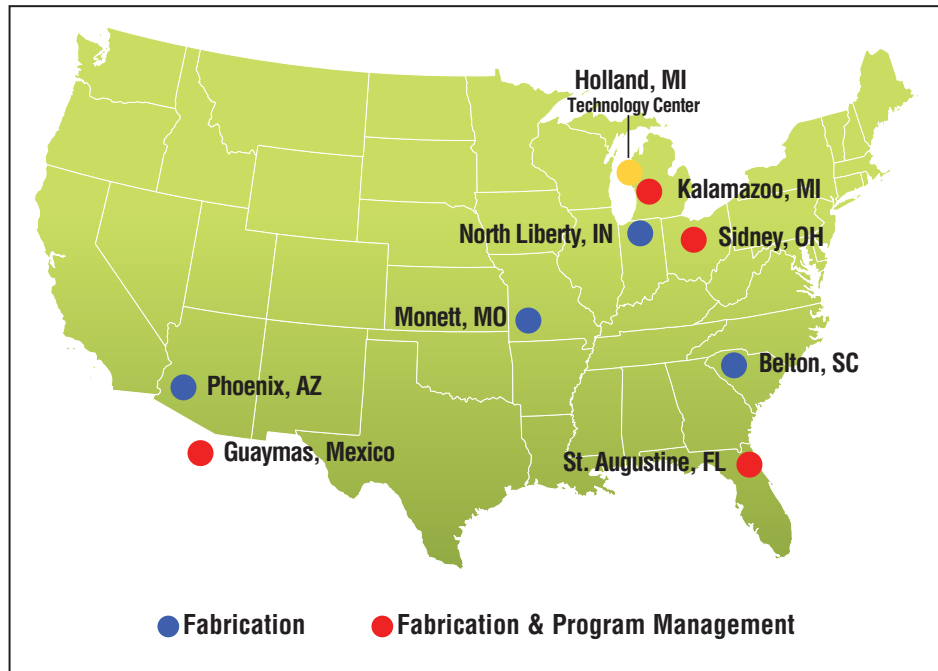
[www.hydro.com/northamerica](http://www.hydro.com/northamerica)



# North America Network Capabilities

Our North America network is eight facilities offering different levels of fabrication and contract manufacturing services. All offer basic fab like tight-tolerance sawing, drilling, and punching. Several offer advanced fab services like CNC machining, CNC bending, and robotic welding. Our manufacturing “centers of excellence” provide sub-assembly and complete end-to-end manufacturing. Common systems and procedures facilitate transfer of work between plants to accommodate unique production requirements and fluctuations in demand. And, extensive technology and best practices sharing ensures Hydro quality throughout the entire network.

Need fabrication outside of the North America? Hydro can help. We have facilities in 16 countries which provide extrusion, fabrication, and manufacturing services.





	Belton, SC*	Guaymas, Mexico**	Kalamazoo, MI***	Monett, MO	North Liberty, IN	Phoenix, AZ**	St. Augustine, FL***	Sidney, OH**
Casthouse products (remelt)				●		●	●	
Extrusion	●		●	●	●	●	●	
Drawn tubing						●	●	
Anodizing/painting/mechanical finishing	● <sup>1</sup>	● <sup>1</sup>	● <sup>1</sup>	● <sup>1</sup>	● <sup>1</sup>	● <sup>1</sup>	● <sup>1</sup>	● <sup>1</sup>
Sawing, drilling, shearing	●	●	●	●	●	●	●	●
Notching, tapping, lathing	●	●	●	●	●	●	●	●
Sheet blanking, forming, assembly			●				●	●
CNC machining		●	●	●	●	●	●	●
TIG and MIG manual welding		●	●			●	●	●
TIG and MIG robotic welding		●	●				●	●
Rotary, stretch, press bending			●	●	●		●	●
End-to-end manufacturing		●	●				●	●

\*ISO 9001:2000 \*\*ISO 9001:2008 \*\*\*ISO 9001:2008, ISO 14001:2004 <sup>1</sup>In-house or partnered

Our network capabilities are constantly evolving. Please visit our website for the most current list of capabilities.



[www.hydro.com/northamerica](http://www.hydro.com/northamerica)



### On top of the Dow Jones Sustainability Indexes

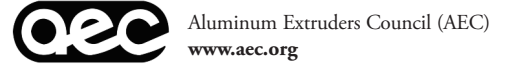
Hydro is one of only two aluminum companies included in the 2010 Dow Jones Sustainability World Indexes (DJSI World), which includes the 10 percent best performers in each industry. Hydro has been included in the DJSI every year since the indexes were launched in 1999.



Hydro is listed on the following social responsibility indices:



### Association memberships



Hydro is a global supplier of aluminum with activities throughout the value chain, from bauxite extraction to the production of rolled and extruded aluminum products and building systems. Based in Norway, the company employs 23,000 people in more than 40 countries. Rooted in a century of experience in renewable energy production, technology development and progressive partnerships, Hydro is committed to strengthening the viability of the customers and communities we serve.

**Hydro**  
 999 Corporate Blvd., Suite 100  
 Linthicum, MD 21090-2254  
 Phone: (888) 935-5752  
 Fax: (410) 487-8053  
[www.hydro.com/northamerica](http://www.hydro.com/northamerica)

