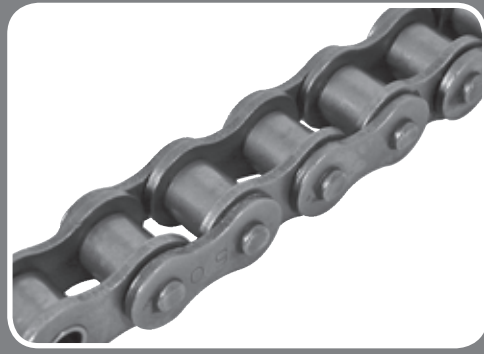
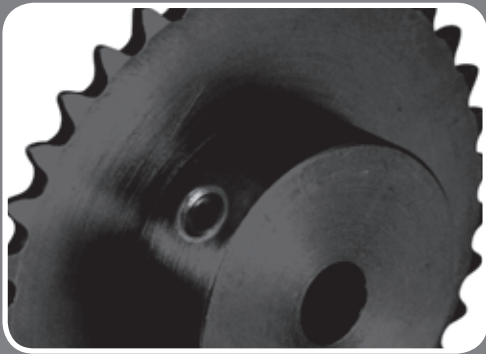
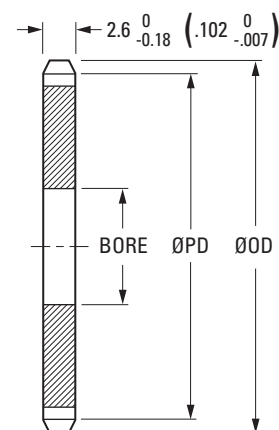




SPROCKETS & ROLLER CHAINS



**MATERIAL:**

S45c AISI 1045 Steel

FINISH:

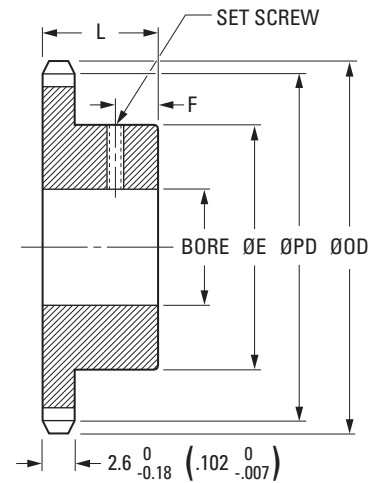
Black Oxide

Dimensions in () are inch.

Catalog Number	No. of Teeth	Bore $+0.025 \begin{matrix} (+.001) \\ 0 \end{matrix} \begin{matrix} (-.000) \end{matrix}$	Pitch Diameter ØPD	ØOD $0 \begin{matrix} (+.000) \\ -.127 \end{matrix} \begin{matrix} (-.005) \end{matrix}$
QSPK04MAC01508	15	8 (.315)	28.86 (1.136)	31.29 (1.232)
QSPK04MAC01608	16		30.75 (1.211)	33.2 (1.307)
QSPK04MAC01708	17		32.65 (1.286)	35.12 (1.383)
QSPK04MAC01808	18		34.55 (1.360)	37.04 (1.458)
QSPK04MAC01908	19		36.45 (1.435)	38.95 (1.533)
QSPK04MAC02008	20		38.35 (1.510)	40.86 (1.609)
QSPK04MAC02108	21		40.26 (1.585)	42.78 (1.684)
QSPK04MAC02208	22		42.16 (1.660)	44.69 (1.760)
QSPK04MAC02308	23		44.06 (1.735)	46.6 (1.835)
QSPK04MAC02408	24		45.97 (1.810)	48.52 (1.910)
QSPK04MAC02508	25		47.87 (1.885)	50.43 (1.985)
QSPK04MAC02608	26		49.78 (1.960)	52.34 (2.061)
QSPK04MAC02808	28		53.59 (2.110)	56.17 (2.211)
QSPK04MAC03008	30		57.4 (2.260)	59.99 (2.362)
QSPK04MAC03208	32		61.21 (2.410)	63.81 (2.512)
QSPK04MAC03508	35		66.93 (2.635)	69.55 (2.738)
QSPK04MAC03608	36		68.84 (2.710)	71.46 (2.813)
QSPK04MAC04008	40		76.47 (3.011)	79.1 (3.114)
QSPK04MAC04408	44		84.11 (3.311)	86.75 (3.415)
QSPK04MAC04508	45		86.01 (3.386)	88.66 (3.490)
QSPK04MAC04808	48	91.74 (3.612)	94.39 (3.716)	
QSPK04MAC05008	50	95.56 (3.762)	98.21 (3.867)	
QSPK04MAC05408	54	103.19 (4.063)	105.85 (4.167)	
QSPK04MAC06008	60	114.64 (4.514)	117.31 (4.619)	
QSPK04MAC07008	70	133.74 (5.265)	136.42 (5.371)	
QSPK04MAC07208	72	137.55 (5.415)	140.24 (5.521)	
QSPK04MAC08008	80	152.83 (6.017)	155.52 (6.123)	
QSPK04MAC09608	96	183.38 (7.220)	186.08 (7.326)	
QSPK04MAC10008	100	191.02 (7.520)	193.72 (7.627)	

B Type Sprockets

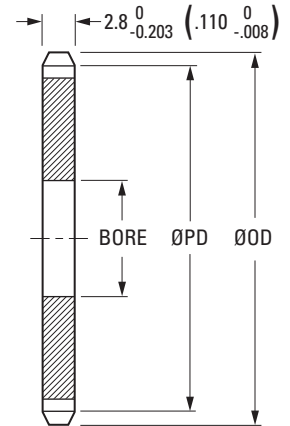
DIN 8187 / ISO R 606



MATERIAL:
S45c AISI 1045 Steel
FINISH:
Black Oxide

Dimensions in () are inch.

Catalog Number	No. of Teeth	Bore $+0.025 \begin{matrix} (+.001) \\ 0 \end{matrix} \begin{matrix} (-.000) \end{matrix}$	Pitch Diameter ØPD	ØOD	Hub Diameter ØE	Overall Length L	F	Set Screw
QSPK04MBC00805	8	5 (.197)	15.68 (.617)	17.83 (.702)	10 (.394)			M2
QSPK04MBC00905	9	5 (.197)	17.54 (.691)	19.76 (.778)	10 (.394)	10 (.394)	4	M2
QSPK04MBC01006	10	6 (.236)	19.42 (.764)	21.69 (.854)	12 (.472)			M3
QSPK04MBC01106	11	6 (.236)	21.3 (.838)	23.61 (.930)	14 (.551)	10 (.394)	4	M3
QSPK04MBC01206	12	6 (.236)	23.18 (.913)	25.53 (1.005)	16 (.630)			M3
QSPK04MBC01308	13	8 (.315)	25.07 (.987)	27.45 (1.081)	18 (.709)			M4
QSPK04MBC01408	14		26.96 (1.062)	29.37 (1.156)		10 (.394)	4	M4
QSPK04MBC01508	15	8 (.315)	28.86 (1.136)	31.29 (1.232)	20 (.787)			M4
QSPK04MBC01608	16		30.75 (1.211)	33.2 (1.307)		10 (.394)	4	M4
QSPK04MBC01708	17		32.65 (1.286)	35.12 (1.383)		10 (.394)	4	M4
QSPK04MBC01808	18	8 (.315)	34.55 (1.360)	37.04 (1.458)	20 (.787)	10 (.394)	4	M4
QSPK04MBC01908	19		36.45 (1.435)	38.95 (1.533)		13 (.512)	5	M4
QSPK04MBC02008	20		38.35 (1.510)	40.86 (1.609)	20 (.787)			M4
QSPK04MBC02108	21	8 (.315)	40.26 (1.585)	42.78 (1.684)	25 (.984)	13 (.512)	5	M4
QSPK04MBC02208	22		42.16 (1.660)	44.69 (1.760)	25 (.984)			M4
QSPK04MBC02308	23		44.06 (1.735)	46.6 (1.835)		13 (.512)	5	M4
QSPK04MBC02408	24	8 (.315)	45.97 (1.810)	48.52 (1.910)	25 (.984)			M4
QSPK04MBC02508	25		47.87 (1.885)	50.43 (1.985)		13 (.512)	5	M4
QSPK04MBC02608	26		49.78 (1.960)	52.34 (2.061)		15 (.591)	6	M4
QSPK04MBC02808	28	8 (.315)	53.59 (2.110)	56.17 (2.211)	30 (1.181)	15 (.591)	6	M4
QSPK04MBC03008	30		57.4 (2.260)	59.99 (2.362)		15 (.591)	6	M4
QSPK04MBC03208	32		61.21 (2.410)	63.81 (2.512)		15 (.591)	6	M4
QSPK04MBC03508	35	8 (.315)	66.93 (2.635)	69.55 (2.738)	30 (1.181)	15 (.591)	6	M4
QSPK04MBC03608	36		68.84 (2.710)	71.46 (2.813)		15 (.591)	6	M4
QSPK04MBC04008	40		76.47 (3.011)	79.1 (3.114)	30 (1.181)	15 (.591)	6	M4
QSPK04MBC04408	44	8 (.315)	84.11 (3.311)	86.75 (3.415)	40 (1.575)	18 (.709)	8	M4
QSPK04MBC04508	45		86.01 (3.386)	88.66 (3.490)	40 (1.575)	18 (.709)	8	M4
QSPK04MBC04808	48		91.74 (3.612)	94.39 (3.716)		18 (.709)	8	M4
QSPK04MBC05008	50	8 (.315)	95.56 (3.762)	98.21 (3.867)	40 (1.575)	18 (.709)	8	M4
QSPK04MBC05408	54		103.19 (4.063)	105.85 (4.167)		18 (.709)	8	M4
QSPK04MBC06008	60		114.64 (4.514)	117.31 (4.619)		20 (.787)	9	M4
QSPK04MBC07008	70	8 (.315)	133.74 (5.265)	136.42 (5.371)	50 (1.969)	20 (.787)	9	M4
QSPK04MBC07208	72		137.55 (5.415)	140.24 (5.521)		20 (.787)	9	M4
QSPK04MBC08008	80		152.83 (6.017)	155.52 (6.123)		30 (1.181)	14	M4
QSPK04MBC09608	96	8 (.315)	183.38 (7.220)	186.08 (7.326)	70 (2.756)	30 (1.181)	14	M4
QSPK04MBC10008	100		191.02 (7.520)	193.72 (7.627)		30 (1.181)	14	M4

**MATERIAL:**

S45c AISI 1045 Steel

FINISH:

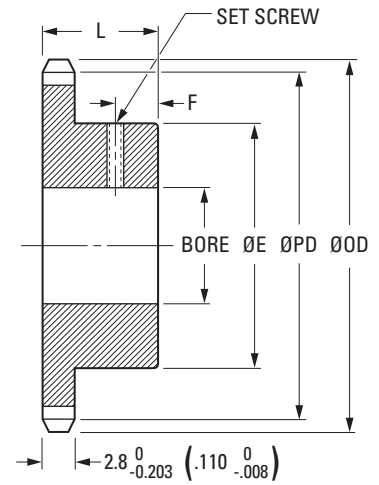
Black Oxide

Dimensions in () are inch.

Catalog Number	No. of Teeth	Bore $+0.025 \begin{matrix} (+.001 \\ 0 \end{matrix} \begin{matrix} (-.000) \end{matrix}$	Pitch Diameter ØPD	ØOD $0 \begin{matrix} (+.000 \\ -.127 \end{matrix} \begin{matrix} (-.005) \end{matrix}$
QSPK05MAC01508	15		38.48 (1.515)	42.05 (1.656)
QSPK05MAC01608	16	8 (.315)	41.01 (1.614)	44.61 (1.756)
QSPK05MAC01708	17		43.54 (1.714)	47.16 (1.857)
QSPK05MAC01808	18		46.07 (1.814)	49.71 (1.957)
QSPK05MAC01908	19	8 (.315)	48.6 (1.914)	52.27 (2.058)
QSPK05MAC02008	20		51.14 (2.013)	54.82 (2.158)
QSPK05MAC02108	21		53.68 (2.113)	57.37 (2.259)
QSPK05MAC02208	22	8 (.315)	56.21 (2.213)	59.92 (2.359)
QSPK05MAC02308	23		58.75 (2.313)	62.47 (2.460)
QSPK05MAC02408	24	8 (.315)	61.29 (2.413)	65.02 (2.560)
QSPK05MAC02508	25	8 (.315)	63.83 (2.513)	67.57 (2.660)
QSPK05MAC02610	26	10 (.394)	66.37 (2.613)	70.12 (2.761)
QSPK05MAC02810	28		71.45 (2.813)	75.22 (2.962)
QSPK05MAC03010	30	10 (.394)	76.53 (3.013)	80.32 (3.162)
QSPK05MAC03210	32		81.62 (3.213)	85.42 (3.363)
QSPK05MAC03510	35		89.25 (3.514)	93.06 (3.664)
QSPK05MAC03610	36	10 (.394)	91.79 (3.614)	95.61 (3.764)
QSPK05MAC04010	40		101.96 (4.014)	105.8 (4.166)
QSPK05MAC04410	44		112.14 (4.415)	115.99 (4.567)
QSPK05MAC04510	45	10 (.394)	114.68 (4.515)	118.54 (4.667)
QSPK05MAC04810	48		122.32 (4.816)	126.18 (4.968)
QSPK05MAC05010	50		127.41 (5.016)	131.28 (5.168)
QSPK05MAC05410	54	10 (.394)	137.59 (5.417)	141.47 (5.570)
QSPK05MAC06010	60		152.86 (6.018)	156.75 (6.171)
QSPK05MAC07010	70		178.31 (7.020)	182.22 (7.174)
QSPK05MAC07210	72	10 (.394)	183.4 (7.221)	187.32 (7.375)
QSPK05MAC08010	80		203.77 (8.022)	207.69 (8.177)
QSPK05MAC09610	96		244.51 (9.626)	248.44 (9.781)
QSPK05MAC10010	100	10 (.394)	254.69 (10.027)	258.63 (10.182)

B Type Sprockets

DIN 8187 / ISO R 606



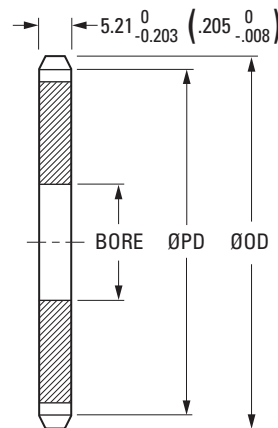
MATERIAL:
S45c AISI 1045 Steel
FINISH:
Black Oxide

Dimensions in () are inch.

Catalog Number	No. of Teeth	Bore $+0.025 \begin{matrix} (+.001) \\ 0 \end{matrix} \begin{matrix} (-.000) \end{matrix}$	Pitch Diameter ØPD	ØOD $0 \begin{matrix} (+.000) \\ -.127 \end{matrix} \begin{matrix} (-.005) \end{matrix}$	Hub Diameter ØE	Overall Length L	F	Set Screw
QSPK05MBC00806	8	6 (.236)	20.91 (.823)	24.11 (.949)	13 (.512)			M3
QSPK05MBC00906	9	6 (.236)	23.39 (.921)	26.68 (1.050)	15 (.591)	12 (.472)	5 (.197)	M3
QSPK05MBC01008	10	8 (.315)	25.89 (1.019)	29.25 (1.152)	17 (.669)			M4
QSPK05MBC01108	11		28.4 (1.118)	31.81 (1.253)	18 (.709)			
QSPK05MBC01208	12	8 (.315)	30.91 (1.217)	34.38 (1.353)	20 (.787)	13 (.512)	5 (.197)	M4
QSPK05MBC01308	13		33.43 (1.316)	36.94 (1.454)	23 (.906)			
QSPK05MBC01408	14		35.95 (1.415)	39.49 (1.555)	25 (.984)	13 (.512)	5 (.197)	
QSPK05MBC01508	15	8 (.315)	38.48 (1.515)	42.05 (1.656)	28 (1.102)	13 (.512)	5 (.197)	M4
QSPK05MBC01608	16		41.01 (1.614)	44.61 (1.756)	30 (1.181)	14 (.551)	6 (.236)	
QSPK05MBC01708	17		43.54 (1.714)	47.16 (1.857)				
QSPK05MBC01808	18	8 (.315)	46.07 (1.814)	49.71 (1.957)	30 (1.181)	14 (.551)	6 (.236)	M4
QSPK05MBC01908	19		48.6 (1.914)	52.27 (2.058)				
QSPK05MBC02008	20		51.14 (2.013)	54.82 (2.158)	30 (1.181)			
QSPK05MBC02108	21	8 (.315)	53.68 (2.113)	57.37 (2.259)	35 (1.378)	14 (.551)	6 (.236)	M4
QSPK05MBC02208	22		56.21 (2.213)	59.92 (2.359)	35 (1.378)			
QSPK05MBC02308	23		58.75 (2.313)	62.47 (2.460)				
QSPK05MBC02408	24	8 (.315)	61.29 (2.413)	65.02 (2.560)	35 (1.378)	14 (.551)	6 (.236)	M4
QSPK05MBC02508	25		63.83 (2.513)	67.57 (2.660)				
QSPK05MBC02610	26		66.37 (2.613)	70.12 (2.761)				
QSPK05MBC02810	28	10 (.394)	71.45 (2.813)	75.22 (2.962)	40 (1.575)	16 (.630)	7 (.276)	M5
QSPK05MBC03010	30		76.53 (3.013)	80.32 (3.162)				
QSPK05MBC03210	32		81.62 (3.213)	85.42 (3.363)				
QSPK05MBC03510	35	10 (.394)	89.25 (3.514)	93.06 (3.664)	40 (1.575)	16 (.630)	7 (.276)	M5
QSPK05MBC03610	36		91.79 (3.614)	95.61 (3.764)				
QSPK05MBC04010	40		101.96 (4.014)	105.8 (4.166)	40 (1.575)	16 (.630)	7 (.276)	
QSPK05MBC04410	44	10 (.394)	112.14 (4.415)	115.99 (4.567)	58 (2.283)	20 (.787)	9 (.354)	M5
QSPK05MBC04510	45		114.68 (4.515)	118.54 (4.667)	58 (2.283)	20 (.787)	9 (.354)	
QSPK05MBC04810	48		122.32 (4.816)	126.18 (4.968)	58 (2.283)			
QSPK05MBC05010	50	10 (.394)	127.41 (5.016)	131.28 (5.168)	58 (2.283)	20 (.787)	9 (.354)	M5
QSPK05MBC05410	54		137.59 (5.417)	141.47 (5.570)	78 (3.071)			
QSPK05MBC06010	60		152.86 (6.018)	156.75 (6.171)				
QSPK05MBC07010	70	10 (.394)	178.31 (7.020)	182.22 (7.174)	78 (3.071)	34 (1.339)	15 (.591)	M5
QSPK05MBC07210	72		183.4 (7.221)	187.32 (7.375)				
QSPK05MBC08010	80		203.77 (8.022)	207.69 (8.177)				
QSPK05MBC09610	96	10 (.394)	244.51 (9.626)	248.44 (9.781)	78 (3.071)	34 (1.339)	15 (.591)	M5
QSPK05MBC10010	100		254.69 (10.027)	258.63 (10.182)				

A Type Sprockets

DIN 8187 / ISO R 606



MATERIAL:

S45c AISI 1045 Steel

FINISH:

Black Oxide

Dimensions in () are inch.

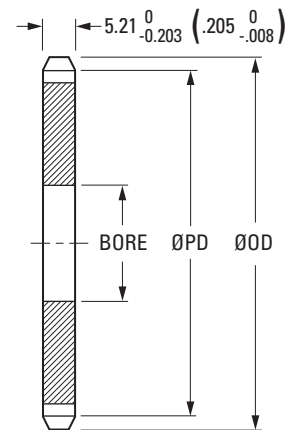
Catalog Number	No. of Teeth	Bore $+0.025 \begin{matrix} (+.001) \\ 0 \end{matrix} \begin{matrix} (-.000) \end{matrix}$	Pitch Diameter ØPD	ØOD $0 \begin{matrix} (+.000) \\ -.127 \end{matrix} \begin{matrix} (-.005) \end{matrix}$
QSPK06MAC01508	15	8 (.315)	45.81 (1.804)	49.67 (1.956)
QSPK06MAC01610	16	10 (.394)	48.82 (1.922)	52.71 (2.075)
QSPK06MAC01710	17		51.84 (2.041)	55.75 (2.195)
QSPK06MAC01810	18	10 (.394)	54.85 (2.160)	58.79 (2.315)
QSPK06MAC01910	19		57.87 (2.278)	61.83 (2.434)
QSPK06MAC02010	20	10 (.394)	60.89 (2.397)	64.87 (2.554)
QSPK06MAC02110	21		63.91 (2.516)	67.91 (2.674)
QSPK06MAC02210	22	10 (.394)	66.93 (2.635)	70.95 (2.793)
QSPK06MAC02310	23		69.95 (2.754)	73.99 (2.913)
QSPK06MAC02410	24	10 (.394)	72.97 (2.873)	77.02 (3.032)
QSPK06MAC02510	25		76 (2.992)	80.06 (3.152)
QSPK06MAC02610	26	10 (.394)	79.02 (3.111)	83.09 (3.271)
QSPK06MAC02710	27		82.05 (3.230)	86.13 (3.391)
QSPK06MAC02810	28	10 (.394)	85.07 (3.349)	89.17 (3.510)
QSPK06MAC02910	29		88.1 (3.468)	92.2 (3.630)
QSPK06MAC03010	30	10 (.394)	91.12 (3.588)	95.24 (3.749)
QSPK06MAC03212	32		97.18 (3.826)	101.3 (3.988)
QSPK06MAC03512	35	12 (.472)	106.26 (4.183)	110.41 (4.347)
QSPK06MAC03612	36		109.29 (4.303)	113.44 (4.466)

Larger numbers of teeth on the next page

SPROCKETS
 ISO 04B
 ISO 05B
 ISO 06B
 ISO 08B
 ISO 10B
 No. 25
 No. 35
 No. 40
 No. 41
 No. 50
 Roller Chains

A Type Sprockets

DIN 8187 / ISO R 606



MATERIAL:
S45c AISI 1045 Steel
FINISH:
Black Oxide

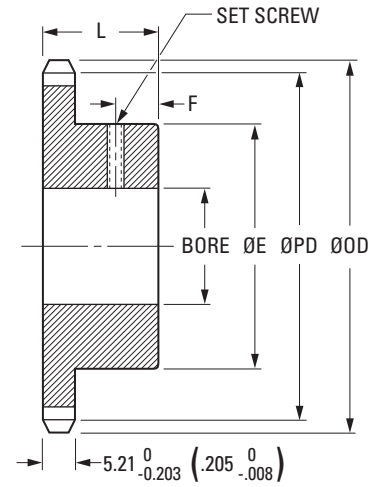
Dimensions in () are inch.

Catalog Number	No. of Teeth	Bore $+0.025 \begin{matrix} (+.001) \\ 0 \end{matrix} \begin{matrix} (-.000) \end{matrix}$	Pitch Diameter ØPD	ØOD $0 \begin{matrix} (+.000) \\ -.127 \end{matrix} \begin{matrix} (-.005) \end{matrix}$
QSPK06MAC03814	38	14 (.551)	115.34 (4.541)	119.51 (4.705)
QSPK06MAC04014	40		121.4 (4.780)	125.58 (4.944)
QSPK06MAC04214	42	14 (.551)	127.46 (5.018)	131.64 (5.183)
QSPK06MAC04514	45		136.55 (5.376)	140.74 (5.541)
QSPK06MAC04814	48	14 (.551)	145.64 (5.734)	149.84 (5.899)
QSPK06MAC05414	54		163.82 (6.449)	168.04 (6.616)
QSPK06MAC05718	57	18 (.709)	172.91 (6.807)	177.14 (6.974)
QSPK06MAC06018	60		182 (7.165)	186.24 (7.332)
QSPK06MAC06418	64	18 (.709)	194.12 (7.643)	198.37 (7.810)
QSPK06MAC07018	70		212.3 (8.358)	216.56 (8.526)
QSPK06MAC07218	72	18 (.709)	218.37 (8.597)	222.63 (8.765)
QSPK06MAC07618	76		230.49 (9.074)	234.76 (9.242)
QSPK06MAC08018	80	18 (.709)	242.61 (9.552)	246.88 (9.720)
QSPK06MAC08418	84		254.74 (10.029)	259.01 (10.197)
QSPK06MAC09018	90	18 (.709)	272.93 (10.745)	277.21 (10.914)
QSPK06MAC09518	95		288.08 (11.342)	292.37 (11.511)
QSPK06MAC09618	96		291.11 (11.461)	295.4 (11.630)
QSPK06MAC10010	100	18 (.709)	303.24 (11.939)	307.53 (12.107)
QSPK06MAC11418	114		345.68 (13.609)	349.98 (13.779)

B Type Sprockets

DIN 8187 / ISO R 606

www.econobelt.com



MATERIAL:

S45c AISI 1045 Steel

FINISH:

Black Oxide

Dimensions in () are inch.

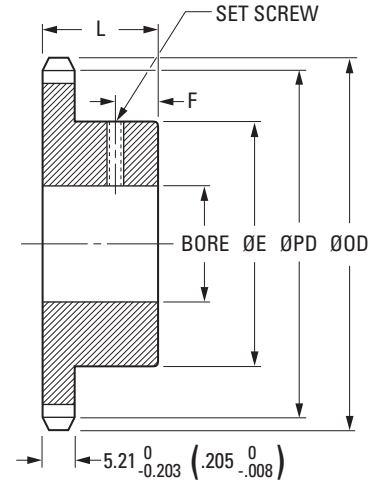
Catalog Number	No. of Teeth	Bore $+0.025 \begin{matrix} +.001 \\ 0 \end{matrix} \begin{matrix} -.000 \end{matrix}$	Pitch Diameter ØPD	ØOD $0 \begin{matrix} +.000 \\ -.127 \end{matrix} \begin{matrix} -.005 \end{matrix}$	Hub Diameter ØE	Overall Length L	F	Set Screw
QSPK06MBC00808	8	8 (.315)	24.89 (.980)	28.3 (1.114)	13 (.512)	22 (.866)	9	M4
QSPK06MBC00908	9	8 (.315)	27.85 (1.096)	31.37 (1.235)	16 (.630)	22 (.866)	9	M4
QSPK06MBC01008	10	8 (.315)	30.82 (1.214)	34.43 (1.355)	20 (.787)	25 (.984)	11	M4
QSPK06MBC01108	11	8 (.315)	33.81 (1.331)	37.48 (1.476)	23 (.906)	25 (.984)	11	M5
QSPK06MBC01208	12	8 (.315)	36.8 (1.449)	40.53 (1.596)	26 (1.024)	25 (.984)	11	M5
QSPK06MBC01310	13	10 (.394)	39.8 (1.567)	43.58 (1.716)	29 (1.142)	25 (.984)	11	M5
QSPK06MBC01410	14	10 (.394)	42.8 (1.685)	46.63 (1.836)	31 (1.220)	25 (.984)	11	M5
QSPK06MBC01510	15	10 (.394)	45.81 (1.804)	49.67 (1.956)	34 (1.339)	25 (.984)	11	M5
QSPK06MBC01610	16	10 (.394)	48.82 (1.922)	52.71 (2.075)	37 (1.457)	25 (.984)	11	M5
QSPK06MBC01710	17	10 (.394)	51.84 (2.041)	55.75 (2.195)	40 (1.575)	25 (.984)	11	M5
QSPK06MBC01810	18	10 (.394)	54.85 (2.160)	58.79 (2.315)	43 (1.693)	25 (.984)	11	M5
QSPK06MBC01910	19	10 (.394)	57.87 (2.278)	61.83 (2.434)	46 (1.811)	25 (.984)	11	M5
QSPK06MBC02010	20	10 (.394)	60.89 (2.397)	64.87 (2.554)	49 (1.929)	28 (1.102)	13	M5
QSPK06MBC02112	21	12 (.472)	63.91 (2.516)	67.91 (2.674)	50 (1.969)	28 (1.102)	13	M6
QSPK06MBC02212	22	12 (.472)	66.93 (2.635)	70.95 (2.793)	51 (2.008)	28 (1.102)	13	M6
QSPK06MBC02312	23	12 (.472)	69.95 (2.754)	73.99 (2.913)	52 (2.047)	28 (1.102)	13	M6
QSPK06MBC02412	24	12 (.472)	72.97 (2.873)	77.02 (3.032)	54 (2.126)	28 (1.102)	13	M6
QSPK06MBC02512	25	12 (.472)	76 (2.992)	80.06 (3.152)	57 (2.244)	28 (1.102)	13	M6
QSPK06MBC02612	26	12 (.472)	79.02 (3.111)	83.09 (3.271)	60 (2.362)	28 (1.102)	13	M6
QSPK06MBC02712	27	12 (.472)	82.05 (3.230)	86.13 (3.391)	60 (2.362)	28 (1.102)	13	M6
QSPK06MBC02812	28	12 (.472)	85.07 (3.349)	89.17 (3.510)	60 (2.362)	28 (1.102)	13	M6
QSPK06MBC02912	29	12 (.472)	88.10 (3.468)	92.2 (3.630)	60 (2.362)	28 (1.102)	13	M6

Larger numbers of teeth on the next page

SPROCKETS ISO 04B ISO 05B ISO 06B ISO 08B ISO 10B No. 25 No. 35 No. 40 No. 41 No. 50 Roller Chains

B Type Sprockets

DIN 8187 / ISO R 606



MATERIAL:

S45c AISI 1045 Steel

FINISH:

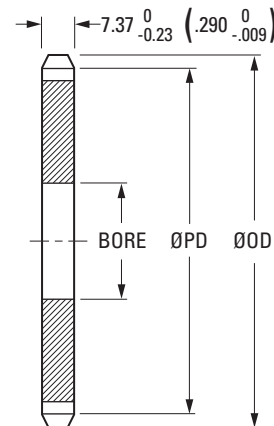
Black Oxide

Dimensions in () are inch.

Catalog Number	No. of Teeth	Bore $+0.025 \begin{matrix} (+.001) \\ 0 \end{matrix} \begin{matrix} (-.000) \end{matrix}$	Pitch Diameter ØPD	ØOD $0 \begin{matrix} (+.000) \\ -.127 \end{matrix} \begin{matrix} (-.005) \end{matrix}$	Hub Diameter ØE	Overall Length L	F	Set Screw
QSPK06MBC03012	30	12 (.472)	91.12 (3.588)	95.24 (3.749)	60 (2.362)	28 (1.102)	13	M6
QSPK06MBC03214	32	14 (.551)	97.18 (3.826)	101.3 (3.988)	65 (2.559)			
QSPK06MBC03514	35	14 (.551)	106.26 (4.183)	110.41 (4.347)	65 (2.559)			
QSPK06MBC03616	36	16 (.630)	109.29 (4.303)	113.44 (4.468)	65 (2.559)	30 (1.181)	14	M8
QSPK06MBC03816	38		115.34 (4.541)	119.51 (4.705)				
QSPK06MBC04016	40		121.4 (4.780)	125.58 (4.944)				
QSPK06MBC04216	42	16 (.630)	127.46 (5.018)	131.64 (5.183)	65 (2.559)	30 (1.181)	14	M8
QSPK06MBC04516	45		136.55 (5.376)	140.74 (5.541)				
QSPK06MBC04816	48		145.64 (5.734)	149.84 (5.899)				
QSPK05MBC05416	54	16 (.630)	163.82 (6.449)	168.04 (6.616)	70 (2.756)	30 (1.181)	14	M8
QSPK06MBC05718	57	18 (.709)	172.91 (6.807)	177.14 (6.974)				
QSPK06MBC06018	60	18 (.709)	182 (7.165)	186.24 (7.332)				
QSPK06MBC06418	64	18 (.709)	194.12 (7.643)	198.37 (7.810)	70 (2.756)	30 (1.181)	14	M8
QSPK06MBC07018	70		212.3 (8.358)	216.56 (8.526)				
QSPK06MBC07218	72		218.37 (8.597)	222.63 (8.765)				
QSPK06MBC07618	76	18 (.709)	230.49 (9.074)	234.76 (9.242)	75 (2.953)	30 (1.181)	14	M8
QSPK06MBC08018	80		242.61 (9.552)	246.88 (9.720)				
QSPK06MBC08418	84		254.74 (10.029)	259.01 (10.197)				
QSPK06MBC09018	90	18 (.709)	272.93 (10.745)	277.21 (10.914)	75 (2.953)	30 (1.181)	14	M8
QSPK06MBC09518	95		288.08 (11.342)	292.37 (11.511)				
QSPK06MBC09618	96		291.11 (11.461)	295.4 (11.630)				
QSPK06MBC10018	100	18 (.709)	303.24 (11.939)	307.53 (12.107)	75 (2.953)	30 (1.181)	14	M8
QSPK06MBC11418	114		345.68 (13.609)	349.98 (13.779)				

A Type Sprockets

DIN 8187 / ISO R 606



MATERIAL:
S45c AISI 1045 Steel
FINISH:
Black Oxide

Dimensions in () are inch.

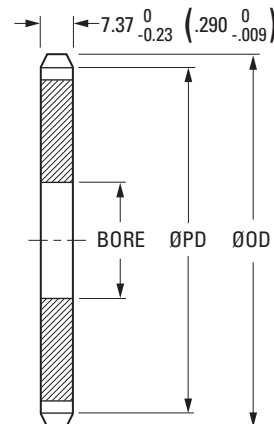
Catalog Number	No. of Teeth	Bore $+0.025 \begin{matrix} +.001 \\ 0 \end{matrix} \begin{matrix} -.000 \end{matrix}$	Pitch Diameter ØPD	ØOD $0 \begin{matrix} +.000 \\ -.005 \end{matrix}$
QSPK08MAC01210	12	10 (.394)	49.07 (1.932)	54 (2.126)
QSPK08MAC01310	13		53.07 (2.089)	58.06 (2.286)
QSPK08MAC01410	14	10 (.394)	57.07 (2.247)	62.13 (2.446)
QSPK08MAC01510	15		61.08 (2.405)	66.18 (2.606)
QSPK08MAC01612	16	12 (.472)	65.1 (2.563)	70.24 (2.765)
QSPK08MAC01712	17		69.12 (2.721)	74.3 (2.925)
QSPK08MAC01812	18	12 (.472)	73.14 (2.879)	78.35 (3.085)
QSPK08MAC01912	19		77.16 (3.038)	82.4 (3.244)
QSPK08MAC02012	20	12 (.472)	81.18 (3.196)	86.45 (3.404)
QSPK08MAC02112	21		85.21 (3.355)	90.51 (3.563)
QSPK08MAC02212	22	12 (.472)	89.24 (3.513)	94.56 (3.723)
QSPK08MAC02312	23		93.27 (3.672)	98.6 (3.882)
QSPK08MAC02414	24	14 (.551)	97.3 (3.831)	102.65 (4.041)
QSPK08MAC02514	25		101.33 (3.989)	106.7 (4.201)
QSPK08MAC02616	26	16 (.630)	105.36 (4.148)	110.75 (4.360)
QSPK08MAC02716	27		109.4 (4.307)	114.8 (4.520)
QSPK08MAC02816	28	16 (.630)	113.43 (4.466)	118.84 (4.679)
QSPK08MAC02916	29		117.46 (4.625)	122.89 (4.838)
QSPK08MAC03016	30	16 (.630)	121.5 (4.783)	126.94 (4.998)
QSPK08MAC03116	31		125.53 (4.942)	130.98 (5.157)
QSPK08MAC03216	32	16 (.630)	129.57 (5.101)	135.03 (5.316)
QSPK08MAC03316	33		133.61 (5.260)	139.08 (5.475)

Larger numbers of teeth on the next page

SPROCKETS
 ISO 04B
 ISO 05B
 ISO 06B
 ISO 08B
 ISO 10B
 No. 25
 No. 35
 No. 40
 No. 41
 No. 50
 Roller Chains

A Type Sprockets

DIN 8187 / ISO R 606



MATERIAL:

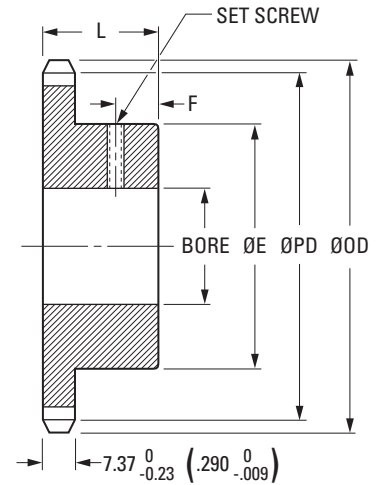
S45c AISI 1045 Steel

FINISH:

Black Oxide

Dimensions in () are inch.

Catalog Number	No. of Teeth	Bore $+0.025_{0}^{+0.001}$ / $-.000$	Pitch Diameter ØPD	ØOD $0_{-0.127}^{+0.000}$ / $-.005$
QSPK08MAC03416	34		137.64 (5.419)	143.12 (5.635)
QSPK08MAC03516	35	16 (.630)	141.68 (5.578)	147.17 (5.794)
QSPK08MAC03616	36		145.72 (5.737)	151.21 (5.953)
QSPK08MAC03716	37	16 (.630)	149.75 (5.896)	155.26 (6.113)
QSPK08MAC03816	38	16 (.630)	153.79 (6.055)	159.3 (6.272)
QSPK08MAC03918	39	18 (.709)	157.83 (6.214)	163.35 (6.431)
QSPK08MAC04018	40		161.87 (6.373)	167.39 (6.590)
QSPK08MAC04218	42	18 (.709)	169.94 (6.691)	175.48 (6.909)
QSPK08MAC04518	45		182.06 (7.168)	187.61 (7.386)
QSPK08MAC04818	48		194.18 (7.645)	199.75 (7.864)
QSPK08MAC05418	54	18 (.709)	218.42 (8.599)	224.01 (8.819)
QSPK08MAC05718	57		230.54 (9.076)	236.14 (9.297)
QSPK08MAC06018	60	18 (.709)	242.66 (9.554)	248.27 (9.774)
QSPK08MAC06420	64	20 (.787)	258.83 (10.190)	264.45 (10.411)
QSPK08MAC07020	70	20 (.787)	283.07 (11.145)	288.71 (11.366)
QSPK08MAC07220	72		291.15 (11.463)	296.79 (11.685)
QSPK08MAC07620	76	20 (.787)	307.32 (12.099)	312.97 (12.321)
QSPK08MAC08020	80		323.49 (12.736)	329.14 (12.958)
QSPK08MAC08420	84	20 (.787)	339.65 (13.372)	345.31 (13.595)
QSPK08MAC09525	95	25 (.984)	384.11 (15.122)	389.78 (15.346)
QSPK08MAC09625	96	25 (.984)	388.15 (15.282)	393.83 (15.505)
QSPK08MAC10025	100		404.32 (15.918)	410 (16.142)
QSPK08MAC11425	114	25 (.984)	460.91 (18.146)	466.6 (18.370)

**MATERIAL:**

S45c AISI 1045 Steel

FINISH:

Black Oxide

Dimensions in () are inch.

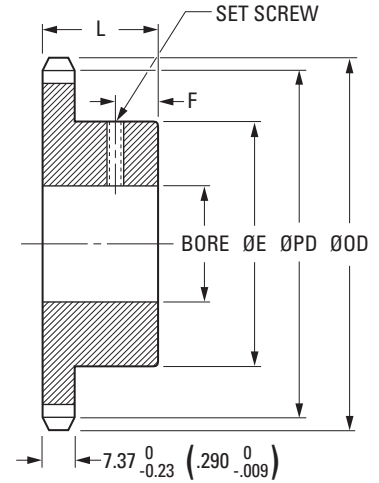
Catalog Number	No. of Teeth	Bore $+0.025 \begin{matrix} +.001 \\ 0 \end{matrix} \begin{matrix} -.000 \end{matrix}$	Pitch Diameter ØPD	ØOD $0 \begin{matrix} +.000 \\ -.127 \end{matrix} \begin{matrix} -.005 \end{matrix}$	Hub Diameter ØE	Overall Length L	F	Set Screw
QSPK08MBC00810	8	10 (.394)	33.19 (1.307)	37.7 (1.484)	20 (.787)	25 (.984)	11	M5
QSPK08MBC00910	9	10 (.394)	37.13 (1.462)	41.78 (1.645)	24 (.945)	25 (.984)	11	M5
QSPK08MBC01010	10	10 (.394)	41.1 (1.618)	45.86 (1.806)	26 (1.024)	25 (.984)	11	M5
QSPK08MBC01110	11	10 (.394)	45.08 (1.775)	49.93 (1.966)	30 (1.181)	25 (.984)	11	M5
QSPK08MBC01210	12	10 (.394)	49.07 (1.932)	54 (2.126)	34 (1.339)	28 (1.102)	13	M5
QSPK08MBC01310	13	10 (.394)	53.07 (2.089)	58.05 (2.286)	38 (1.496)	28 (1.102)	13	M5
QSPK08MBC01410	14	10 (.394)	57.07 (2.247)	62.13 (2.446)	42 (1.654)	28 (1.102)	13	M5
QSPK08MBC01510	15	10 (.394)	61.08 (2.405)	66.18 (2.806)	46 (1.811)	28 (1.102)	13	M5
QSPK08MBC01612	16	12 (.472)	65.1 (2.563)	70.24 (2.765)	50 (1.968)	28 (1.102)	13	M6
QSPK08MBC01712	17	12 (.472)	69.12 (2.721)	74.3 (2.925)	54 (2.126)	28 (1.102)	13	M6
QSPK08MBC01812	18	12 (.472)	73.14 (2.879)	78.35 (3.085)	57 (2.244)	28 (1.102)	13	M6
QSPK08MBC01912	19	12 (.472)	77.16 (3.038)	82.4 (3.244)	64 (2.520)	28 (1.102)	13	M6
QSPK08MBC02012	20	12 (.472)	81.18 (3.196)	86.45 (3.404)	67 (2.638)	28 (1.102)	13	M6
QSPK08MBC02112	21	12 (.472)	85.21 (3.355)	90.51 (3.563)	70 (2.756)	28 (1.102)	13	M6
QSPK08MBC02212	22	12 (.472)	89.24 (3.513)	94.56 (3.723)	70 (2.756)	28 (1.102)	13	M6
QSPK08MBC02312	23	12 (.472)	93.27 (3.672)	98.6 (3.882)	70 (2.756)	28 (1.102)	13	M6
QSPK08MBC02414	24	14 (.551)	97.3 (3.831)	102.65 (4.041)	70 (2.756)	28 (1.102)	13	M6
QSPK08MBC02514	25	14 (.551)	101.33 (3.989)	106.7 (4.201)	70 (2.756)	28 (1.102)	13	M6
QSPK08MBC02616	26	16 (.630)	105.36 (4.148)	110.75 (4.360)	70 (2.756)	30 (1.181)	14	M8
QSPK08MBC02716	27	16 (.630)	109.4 (4.307)	114.8 (4.520)	70 (2.756)	30 (1.181)	14	M8
QSPK08MBC02816	28	16 (.630)	113.43 (4.466)	118.84 (4.679)	70 (2.756)	30 (1.181)	14	M8
QSPK08MBC02918	29	16 (.630)	117.46 (4.625)	122.89 (4.838)	80 (3.150)	30 (1.181)	14	M8
QSPK08MBC03016	30	16 (.630)	121.5 (4.783)	126.94 (4.998)	80 (3.150)	30 (1.181)	14	M8
QSPK08MBC03116	31	16 (.630)	125.53 (4.942)	130.98 (5.157)	90 (3.543)	30 (1.181)	14	M8

Larger numbers of teeth on the next page

 SPROCKETS
 ISO 04B
 ISO 05B
 ISO 06B
 ISO 08B
 ISO 10B
 No. 25
 No. 35
 No. 40
 No. 41
 No. 50
 Roller Chains

B Type Sprockets

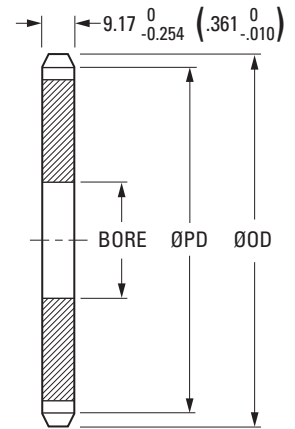
DIN 8187 / ISO R 606



MATERIAL:
S45c AISI 1045 Steel
FINISH:
Black Oxide

Dimensions in () are inch.

Catalog Number	No. of Teeth	Bore $+0.025 \begin{matrix} (+.001) \\ 0 \end{matrix} \begin{matrix} (-.000) \end{matrix}$	Pitch Diameter ØPD	ØOD $0 \begin{matrix} (+.000) \\ -.127 \end{matrix} \begin{matrix} (-.005) \end{matrix}$	Hub Diameter ØE	Overall Length L	F	Set Screw
QSPK08MBC03216	32	16 (.630)	129.57 (5.101)	135.03 (5.316)	90 (3.543)	30 (1.181)	14	M8
QSPK08MBC03316	33	16 (.630)	133.61 (5.260)	139.08 (5.475)	90 (3.543)	30 (1.181)	14	M8
QSPK08MBC03416	34	16 (.630)	137.64 (5.419)	143.12 (5.635)	90 (3.543)	30 (1.181)	14	M8
QSPK08MBC03516	35	16 (.630)	141.68 (5.578)	147.17 (5.794)	90 (3.543)	30 (1.181)	14	M8
QSPK08MBC03616	36	16 (.630)	145.72 (5.737)	151.21 (5.953)	90 (3.543)	35 (1.378)	16	M8
QSPK08MBC03716	37	16 (.630)	149.75 (5.896)	155.26 (6.113)	90 (3.543)	35 (1.378)	16	M8
QSPK08MBC03816	38	16 (.630)	153.79 (6.055)	159.3 (6.272)	90 (3.543)	35 (1.378)	16	M8
QSPK08MBC03918	39	18 (.709)	157.83 (6.214)	163.35 (6.431)	90 (3.543)	35 (1.378)	16	M8
QSPK08MBC04018	40	18 (.709)	161.87 (6.373)	167.39 (6.590)	90 (3.543)	35 (1.378)	16	M8
QSPK08MBC04218	42	18 (.709)	169.94 (6.691)	175.48 (6.909)	90 (3.543)	40 (1.575)	18	M8
QSPK08MBC04518	45	18 (.709)	182.06 (7.168)	187.61 (7.386)	90 (3.543)	40 (1.575)	18	M8
QSPK08MBC04818	48	18 (.709)	194.18 (7.645)	199.75 (7.864)	100 (3.937)	40 (1.575)	18	M8
QSPK08MBC05418	54	18 (.709)	218.42 (8.599)	224.01 (8.819)	100 (3.937)	40 (1.575)	18	M8
QSPK08MBC05718	57	18 (.709)	230.54 (9.076)	236.14 (9.297)	100 (3.937)	40 (1.575)	18	M8
QSPK08MBC06018	60	18 (.709)	242.66 (9.554)	248.27 (9.774)	100 (3.937)	40 (1.575)	18	M8
QSPK08MBC06420	64	20 (.787)	258.83 (10.190)	264.45 (10.411)	100 (3.937)	40 (1.575)	18	M10
QSPK08MBC07020	70	20 (.787)	283.07 (11.145)	288.71 (11.366)	100 (3.937)	40 (1.575)	18	M10
QSPK08MBC07220	72	20 (.787)	291.15 (11.463)	296.79 (11.685)	100 (3.937)	40 (1.575)	18	M10
QSPK08MBC07620	76	20 (.787)	307.32 (12.099)	312.97 (12.321)	100 (3.937)	40 (1.575)	18	M10
QSPK08MBC08020	80	20 (.787)	323.49 (12.736)	329.14 (12.958)	100 (3.937)	40 (1.575)	18	M10
QSPK08MBC08420	84	20 (.787)	339.65 (13.372)	345.31 (13.595)	100 (3.937)	40 (1.575)	18	M10
QSPK08MBC09525	95	25 (.984)	384.11 (15.122)	389.78 (15.346)	100 (3.937)	40 (1.575)	18	M12
QSPK08MBC09625	96	25 (.984)	388.15 (15.282)	393.83 (15.505)	100 (3.937)	40 (1.575)	18	M12
QSPK08MBC10025	100	25 (.984)	404.32 (15.918)	410 (16.142)	100 (3.937)	40 (1.575)	18	M12
QSPK08MBC11425	114	25 (.984)	460.91 (18.146)	466.6 (18.370)	100 (3.937)	40 (1.575)	18	M12

**MATERIAL:**

S45c AISI 1045 Steel

FINISH:

Black Oxide

Dimensions in () are inch.

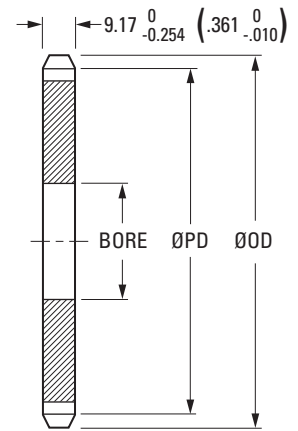
Catalog Number	No. of Teeth	Bore $+0.025 \begin{matrix} +.001 \\ 0 \end{matrix} \begin{matrix} -.000 \end{matrix}$	Pitch Diameter ØPD	ØOD $0 \begin{matrix} +.000 \\ -.127 \end{matrix} \begin{matrix} -.005 \end{matrix}$
QSPK10MAC01212	12	12 (.472)	61.34 (2.415)	67.98 (2.676)
QSPK10MAC01312	13	12 (.472)	66.33 (2.612)	73.06 (2.876)
QSPK10MAC01412	14	12 (.472)	71.34 (2.809)	78.13 (3.076)
QSPK10MAC01512	15	12 (.472)	76.35 (3.006)	83.21 (3.276)
QSPK10MAC01612	16	12 (.472)	81.37 (3.204)	88.28 (3.476)
QSPK10MAC01712	17	12 (.472)	86.39 (3.401)	93.35 (3.675)
QSPK10MAC01814	18	14 (.551)	91.42 (3.599)	98.41 (3.875)
QSPK10MAC01914	19	14 (.551)	96.45 (3.797)	103.48 (4.074)
QSPK10MAC02014	20	14 (.551)	101.48 (3.995)	108.54 (4.273)
QSPK10MAC02116	21	16 (.630)	106.51 (4.193)	113.61 (4.473)
QSPK10MAC02216	22	16 (.630)	111.55 (4.392)	118.67 (4.672)
QSPK10MAC02316	23	16 (.630)	116.59 (4.590)	123.73 (4.871)
QSPK10MAC02416	24	16 (.630)	121.62 (4.788)	128.79 (5.071)
QSPK10MAC02516	25	16 (.630)	126.66 (4.987)	133.85 (5.270)
QSPK10MAC02620	26	20 (.787)	131.7 (5.185)	138.91 (5.469)
QSPK10MAC02720	27	20 (.787)	136.74 (5.384)	143.97 (5.668)
QSPK10MAC02820	28	20 (.787)	141.79 (5.582)	149.03 (5.867)
QSPK10MAC02920	29	20 (.787)	146.83 (5.781)	154.09 (6.067)
QSPK10MAC03020	30	20 (.787)	151.87 (5.979)	159.15 (6.266)
QSPK10MAC03120	31	20 (.787)	156.92 (6.178)	164.21 (6.465)
QSPK10MAC03220	32	20 (.787)	161.96 (6.376)	169.26 (6.664)
QSPK10MAC03320	33	20 (.787)	167.01 (6.575)	174.32 (6.863)
QSPK10MAC03420	34	20 (.787)	172.05 (6.774)	179.38 (7.062)
QSPK10MAC03520	35	20 (.787)	177.1 (6.972)	184.44 (7.261)
QSPK10MAC03620	36	20 (.787)	182.15 (7.171)	189.49 (7.460)
QSPK10MAC03720	37	20 (.787)	187.19 (7.370)	194.55 (7.659)
QSPK10MAC03820	38	20 (.787)	192.24 (7.568)	199.6 (7.858)
QSPK10MAC03920	39	20 (.787)	197.29 (7.767)	204.66 (8.058)

Larger numbers of teeth on the next page

 SPROCKETS
 ISO 10B
 ISO 05B
 ISO 06B
 ISO 08B
 ISO 10B
 No. 25
 No. 35
 No. 40
 No. 41
 No. 50
 Roller Chains

A Type Sprockets

DIN 8187 / ISO R 606



MATERIAL:
S45c AISI 1045 Steel
FINISH:
Black Oxide

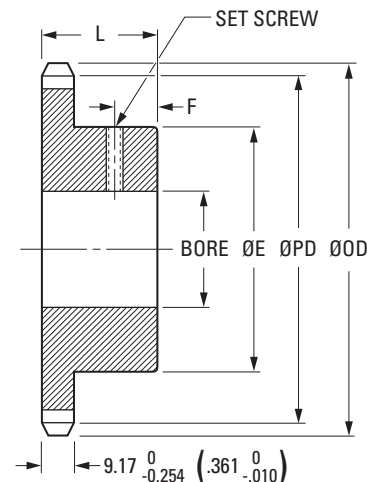
Dimensions in () are inch.

Catalog Number	No. of Teeth	Bore $+0.025 \begin{matrix} (+.001) \\ 0 \end{matrix} \begin{matrix} (-.000) \end{matrix}$	Pitch Diameter ØPD	ØOD $0 \begin{matrix} (+.000) \\ -.127 \end{matrix} \begin{matrix} (-.005) \end{matrix}$
QSPK10MAC04020	40	20 (.787)	202.33 (7.966)	209.72 (8.257)
QSPK10MAC04120	41		207.38 (8.165)	214.77 (8.456)
QSPK10MAC04220	42	20 (.787)	212.43 (8.363)	219.83 (8.655)
QSPK10MAC04320	43		217.48 (8.562)	224.88 (8.854)
QSPK10MAC04420	44	20 (.787)	222.53 (8.761)	229.94 (9.053)
QSPK10MAC04520	45		227.58 (8.960)	234.99 (9.252)
QSPK10MAC04620	46	20 (.787)	232.63 (9.156)	240.05 (9.451)
QSPK10MAC04720	47		237.68 (9.357)	245.11 (9.650)
QSPK10MAC04825	48	25 (.984)	242.73 (9.556)	250.16 (9.849)
QSPK10MAC04925	49		247.78 (9.755)	255.22 (10.048)
QSPK10MAC05025	50	25 (.984)	252.82 (9.954)	260.27 (10.247)
QSPK10MAC05125	51		257.87 (10.153)	265.33 (10.446)
QSPK10MAC05225	52	25 (.984)	262.92 (10.351)	270.38 (10.645)
QSPK10MAC05325	53		267.97 (10.550)	275.43 (10.844)
QSPK10MAC05425	54	25 (.984)	273.03 (10.749)	280.49 (11.043)
QSPK10MAC05525	55		278.08 (10.948)	285.54 (11.242)
QSPK10MAC05625	56	25 (.984)	283.13 (11.147)	290.6 (11.441)
QSPK10MAC05725	57		288.18 (11.346)	295.65 (11.640)
QSPK10MAC05825	58	25 (.984)	293.23 (11.544)	300.71 (11.839)
QSPK10MAC05925	59		298.28 (11.743)	305.76 (12.038)
QSPK10MAC06025	60	25 (.984)	303.33 (11.942)	310.82 (12.237)
QSPK10MAC07025	70		353.84 (13.931)	361.36 (14.227)
QSPK10MAC07225	72	25 (.984)	363.94 (14.328)	371.47 (14.625)
QSPK10MAC07625	76		384.15 (15.124)	391.68 (15.421)
QSPK10MAC08025	80	25 (.984)	404.36 (15.920)	411.9 (16.216)
QSPK10MAC08425	84		424.57 (16.715)	432.11 (17.012)
QSPK10MAC09525	95	25 (.984)	480.14 (18.903)	487.7 (19.201)
QSPK10MAC09625	96		485.19 (19.102)	492.76 (19.400)
QSPK10MAC10025	100		505.4 (19.898)	512.97 (20.196)
QSPK10MAC11225	112	25 (.984)	566.03 (22.285)	573.62 (22.583)
QSPK10MAC11425	114		576.13 (22.682)	583.72 (22.981)

B Type Sprockets

DIN 8187 / ISO R 606

www.econobelt.com



MATERIAL:
S45c AISI 1045 Steel
FINISH:
Black Oxide

Dimensions in () are inch.

Catalog Number	No. of Teeth	Bore		Pitch Diameter ØPD		ØOD		Hub Diameter ØE	Overall Length L	F	Set Screw	
		+0.025 0	(+.001) (-.000)			0 -0.127	(+.000) (-.005)					
QSPK10MBC00810	8	10	(.394)	41.48	(1.633)	47.6	(1.874)	22	(.866)	25	(.984)	M5
QSPK10MBC00910	9	10	(.394)	46.42	(1.827)	52.7	(2.075)	27	(1.063)	25	(.984)	M5
QSPK10MBC01010	10	12	(.472)	51.37	(2.023)	57.8	(2.276)	32	(1.260)	30	(1.181)	M5
QSPK10MBC01112	11	12	(.472)	56.35	(2.218)	62.89	(2.476)	37	(1.457)	30	(1.181)	M5
QSPK10MBC01212	12	12	(.472)	61.34	(2.415)	67.98	(2.676)	43	(1.693)	30	(1.181)	M5
QSPK10MBC01312	13	12	(.472)	66.33	(2.612)	73.06	(2.876)	48	(1.890)	30	(1.181)	M5
QSPK10MBC01412	14	12	(.472)	71.34	(2.809)	78.13	(3.076)	53	(2.087)	30	(1.181)	M5
QSPK10MBC01512	15	12	(.472)	76.35	(3.006)	83.21	(3.276)	57	(2.244)	30	(1.181)	M5
QSPK10MBC01612	16	12	(.472)	81.37	(3.204)	88.28	(3.476)	63	(2.480)	30	(1.181)	M6
QSPK10MBC01712	17	12	(.472)	86.39	(3.401)	93.35	(3.675)	67	(2.638)	30	(1.181)	M6
QSPK10MBC01814	18	14	(.551)	91.42	(3.599)	98.41	(3.875)	73	(2.874)	30	(1.181)	M6
QSPK10MBC01914	19	14	(.551)	96.45	(3.797)	103.48	(4.074)	76	(2.992)	30	(1.181)	M6
QSPK10MBC02014	20	16	(.630)	101.48	(3.995)	108.54	(4.273)	76	(2.992)	30	(1.181)	M6
QSPK10MBC02116	21	16	(.630)	106.51	(4.193)	113.61	(4.473)	76	(2.992)	30	(1.181)	M6
QSPK10MBC02216	22	16	(.630)	111.55	(4.392)	118.67	(4.672)	76	(2.992)	30	(1.181)	M6
QSPK10MBC02316	23	16	(.630)	116.59	(4.590)	123.73	(4.871)	76	(2.992)	30	(1.181)	M6
QSPK10MBC02416	24	16	(.630)	121.62	(4.788)	128.79	(5.071)	76	(2.992)	30	(1.181)	M6
QSPK10MBC02516	25	16	(.630)	126.66	(4.987)	133.85	(5.270)	76	(2.992)	30	(1.181)	M6
QSPK10MBC02620	26	20	(.787)	131.7	(5.185)	138.91	(5.469)	76	(2.992)	35	(1.378)	M8
QSPK10MBC02720	27	20	(.787)	136.74	(5.384)	143.97	(5.668)	76	(2.992)	35	(1.378)	M8
QSPK10MBC02820	28	20	(.787)	141.79	(5.582)	149.03	(5.867)	76	(2.992)	35	(1.378)	M8
QSPK10MBC02920	29	20	(.787)	146.83	(5.781)	154.09	(6.067)	76	(2.992)	35	(1.378)	M8
QSPK10MBC03020	30	20	(.787)	151.87	(5.979)	159.15	(6.266)	82	(3.228)	35	(1.378)	M8
QSPK10MBC03120	31	20	(.787)	156.92	(6.178)	164.21	(6.465)	82	(3.228)	35	(1.378)	M8
QSPK10MBC03220	32	20	(.787)	161.96	(6.376)	169.26	(6.664)	82	(3.228)	35	(1.378)	M8
QSPK10MBC03320	33	20	(.787)	167.01	(6.575)	174.32	(6.863)	82	(3.228)	35	(1.378)	M8
QSPK10MBC03420	34	20	(.787)	172.05	(6.774)	179.38	(7.062)	82	(3.228)	35	(1.378)	M8
QSPK10MBC03520	35	20	(.787)	177.1	(6.972)	184.44	(7.261)	82	(3.228)	35	(1.378)	M8
QSPK10MBC03620	36	20	(.787)	182.15	(7.171)	189.49	(7.460)	82	(3.228)	35	(1.378)	M8
QSPK10MBC03720	37	20	(.787)	187.19	(7.370)	194.55	(7.659)	82	(3.228)	35	(1.378)	M8
QSPK10MBC03820	38	20	(.787)	192.24	(7.568)	199.6	(7.858)	82	(3.228)	35	(1.378)	M8
QSPK10MBC03920	39	20	(.787)	197.29	(7.767)	204.66	(8.058)	82	(3.228)	35	(1.378)	M8

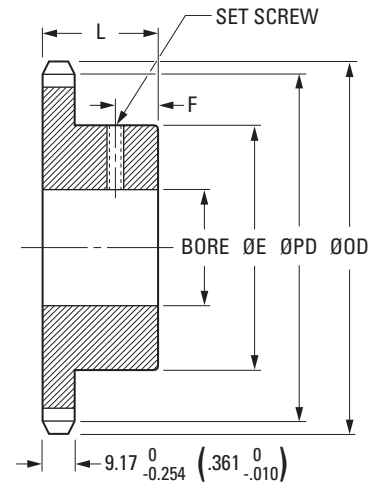
Larger numbers of teeth on the next page

SPROCKETS ISO 10B ISO 05B ISO 06B ISO 08B ISO 10B No. 25 No. 35 No. 40 No. 41 No. 50 Roller Chains

B Type Sprockets

DIN 8187 / ISO R 606

www.econobelt.com



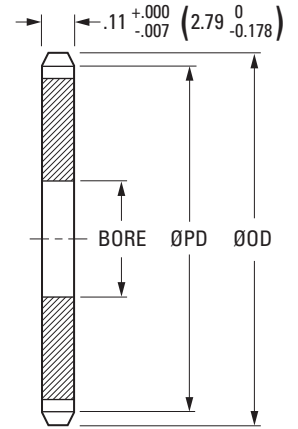
MATERIAL:
S45c AISI 1045 Steel
FINISH:
Black Oxide

Dimensions in () are inch.

Catalog Number	No. of Teeth	Bore $+0.025 \begin{matrix} +.001 \\ 0 \end{matrix} \begin{matrix} -.000 \\ -.000 \end{matrix}$	Pitch Diameter ØPD	ØOD $0 \begin{matrix} +.000 \\ -.127 \end{matrix} \begin{matrix} -.005 \\ -.005 \end{matrix}$	Hub Diameter ØE	Overall Length L	F	Set Screw
QSPK10MBC04020	40	20 (.787)	202.33 (7.966)	209.72 (8.257)	82 (3.228)	35 (1.378)	16	M8
QSPK10MBC04120	41		207.38 (8.165)	214.77 (8.456)		40 (1.575)	18	
QSPK10MBC04220	42	20 (.787)	212.43 (8.363)	219.83 (8.655)	82 (3.228)	40 (1.575)	18	M8
QSPK10MBC04320	43		217.48 (8.562)	224.88 (8.854)				
QSPK10MBC04420	44	20 (.787)	222.53 (8.761)	229.94 (9.053)	82 (3.228)	40 (1.575)	18	M8
QSPK10MBC04520	45		227.58 (8.960)	234.99 (9.252)				
QSPK10MBC04620	46	20 (.787)	232.63 (9.159)	240.05 (9.451)	82 (3.228)	40 (1.575)	18	M8
QSPK10MBC04720	47		237.68 (9.357)	245.11 (9.650)				M10
QSPK10MBC04825	48	25 (.984)	242.73 (9.556)	250.16 (9.849)	95 (3.740)	40 (1.575)	18	M10
QSPK10MBC04925	49		247.78 (9.755)	255.22 (10.048)				
QSPK10MBC05025	50	25 (.984)	252.82 (9.954)	260.27 (10.247)	95 (3.740)	40 (1.575)	18	M10
QSPK10MBC05125	51		257.87 (10.153)	265.33 (10.446)				
QSPK10MBC05225	52	25 (.984)	262.92 (10.351)	270.38 (10.645)	95 (3.740)	40 (1.575)	18	M10
QSPK10MBC05325	53		267.97 (10.550)	275.43 (10.844)				M12
QSPK10MBC05425	54	25 (.984)	273.03 (10.749)	280.49 (11.043)	95 (3.740)	40 (1.575)	18	M12
QSPK10MBC05525	55		278.08 (10.948)	285.54 (11.242)				
QSPK10MBC05625	56	25 (.984)	283.13 (11.147)	290.6 (11.441)	95 (3.740)	40 (1.575)	18	M12
QSPK10MBC05725	57		288.18 (11.346)	295.65 (11.640)				
QSPK10MBC05825	58	25 (.984)	293.23 (11.544)	300.71 (11.839)	95 (3.740)	44 (1.732)	20	M12
QSPK10MBC05925	59		298.28 (11.743)	305.76 (12.038)				
QSPK10MBC06025	60	25 (.984)	303.33 (11.942)	310.82 (12.237)	95 (3.740)	44 (1.732)	20	M12
QSPK10MBC07025	70		353.84 (13.931)	361.36 (14.227)				
QSPK10MBC07225	72	25 (.984)	363.94 (14.328)	371.47 (14.625)	95 (3.740)	44 (1.732)	20	M12
QSPK10MBC07625	76		384.15 (15.124)	391.68 (15.421)				
QSPK10MBC08025	80	25 (.984)	404.36 (15.920)	411.9 (16.216)	108 (4.252)	44 (1.732)	20	M12
QSPK10MBC08425	84		424.57 (16.715)	432.11 (17.012)		50 (1.969)	24	
QSPK10MBC09525	95	25 (.984)	480.14 (18.903)	487.7 (19.201)	108 (4.252)	50 (1.969)	24	M12
QSPK10MBC09625	96		485.19 (19.102)	492.76 (19.400)				
QSPK10MBC10025	100	25 (.984)	505.4 (19.898)	512.97 (20.196)	108 (4.252)	50 (1.969)	24	M12
QSPK10MBC11225	112		566.03 (22.285)	573.62 (22.583)				
QSPK10MBC11425	114		576.13 (22.682)	583.72 (22.981)				

A Type Sprockets

ANSI B29.1

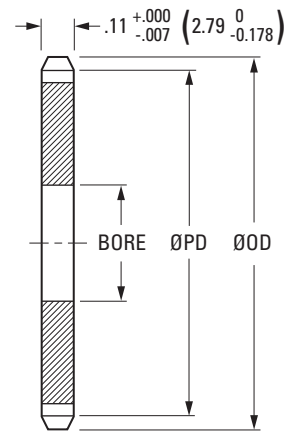


MATERIAL:
S45c AISI 1045 Steel
FINISH:
Black Oxide

Dimensions in () are mm.

Catalog Number	No. of Teeth	Bore $\begin{matrix} +.001 & (+0.025) \\ -.000 & 0 \end{matrix}$	Pitch Diameter ØPD	ØOD $\begin{matrix} +.000 & 0 \\ -.005 & -0.127 \end{matrix}$
QSPK25-AC00908	9		.731 (18.57)	.837 (21.26)
QSPK25-AC01008	10	.250 (6.35)	.809 (20.55)	.919 (23.35)
QSPK25-AC01108	11		.887 (22.54)	1.001 (25.44)
QSPK25-AC01208	12	.250 (6.35)	.966 (24.53)	1.083 (27.51)
QSPK25-AC01308	13		1.045 (26.53)	1.164 (29.57)
QSPK25-AC01408	14		1.123 (28.54)	1.245 (31.63)
QSPK25-AC01508	15	.250 (6.35)	1.202 (30.54)	1.326 (33.68)
QSPK25-AC01608	16		1.281 (32.55)	1.407 (35.73)
QSPK25-AC01708	17		1.361 (34.56)	1.487 (37.78)
QSPK25-AC01808	18	.250 (6.35)	1.440 (36.57)	1.568 (39.82)
QSPK25-AC01908	19		1.519 (38.58)	1.648 (41.86)
QSPK25-AC02008	20		1.598 (40.59)	1.728 (43.9)
QSPK25-AC02108	21	.250 (6.35)	1.677 (42.61)	1.809 (45.94)
QSPK25-AC02208	22		1.757 (44.62)	1.889 (47.98)
QSPK25-AC02308	23		1.836 (46.63)	1.969 (50.01)
QSPK25-AC02412	24	.375 (9.53)	1.915 (48.65)	2.049 (52.04)
QSPK25-AC02512	25		1.995 (50.66)	2.129 (54.08)
QSPK25-AC02612	26		2.074 (52.68)	2.209 (56.11)
QSPK25-AC02812	28	.375 (9.53)	2.233 (56.71)	2.369 (60.17)
QSPK25-AC03012	30		2.392 (60.75)	2.529 (64.23)
QSPK25-AC03112	31		2.471 (62.77)	2.608 (66.25)
QSPK25-AC03212	32	.375 (9.53)	2.551 (64.78)	2.688 (68.28)
QSPK25-AC03312	33		2.630 (66.8)	2.768 (70.31)
QSPK25-AC03412	34		2.709 (68.82)	2.848 (72.34)
QSPK25-AC03512	35	.375 (9.53)	2.789 (70.84)	2.928 (74.36)
QSPK25-AC03612	36		2.868 (72.86)	3.008 (76.39)
QSPK25-AC03712	37		2.948 (74.88)	3.087 (78.42)
QSPK25-AC03812	38	.375 (9.53)	3.027 (76.9)	3.167 (80.44)
QSPK25-AC03912	39	.375 (9.53)	3.107 (78.91)	3.247 (82.47)
QSPK25-AC04016	40	.500 (12.7)	3.186 (80.93)	3.327 (84.49)
QSPK25-AC04116	41	.500 (12.7)	3.266 (82.95)	3.406 (86.52)
QSPK25-AC04216	42		3.345 (84.97)	3.486 (88.54)
QSPK25-AC04316	43		3.425 (86.99)	3.566 (90.57)
QSPK25-AC04416	44	.500 (12.7)	3.504 (89.01)	3.645 (92.59)
QSPK25-AC04516	45		3.584 (91.03)	3.725 (94.62)
QSPK25-AC04616	46		3.663 (93.05)	3.805 (96.64)

Larger numbers of teeth on the next page

**MATERIAL:**

S45c AISI 1045 Steel

FINISH:

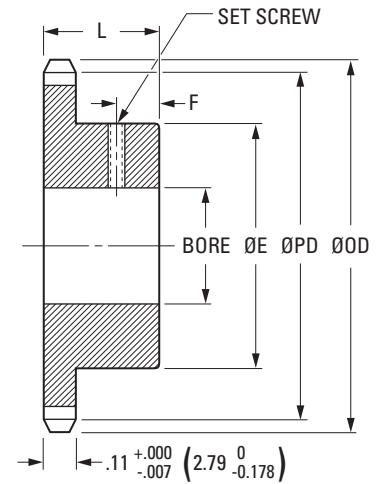
Black Oxide

Dimensions in () are mm.

Catalog Number	No. of Teeth	Bore +.001 (+0.025) -.000 (0)	Pitch Diameter ØPD	ØOD +.000 (0) -.005 (-0.127)
QSPK25-AC04716	47		3.743 (95.07)	3.885 (98.67)
QSPK25-AC04816	48	.500 (12.7)	3.822 (97.09)	3.964 (100.69)
QSPK25-AC04916	49		3.902 (99.11)	4.044 (102.72)
QSPK25-AC05016	50		3.981 (101.13)	4.124 (104.74)
QSPK25-AC05116	51	.500 (12.7)	4.061 (103.15)	4.203 (106.76)
QSPK25-AC05216	52		4.141 (105.17)	4.283 (108.79)
QSPK25-AC05316	53		4.220 (107.19)	4.363 (110.81)
QSPK25-AC05416	54	.500 (12.7)	4.300 (109.21)	4.442 (112.84)
QSPK25-AC05516	55		4.379 (111.23)	4.522 (114.86)
QSPK25-AC05616	56		4.459 (113.25)	4.602 (116.88)
QSPK25-AC05716	57	.500 (12.7)	4.538 (115.27)	4.681 (118.91)
QSPK25-AC05816	58		4.618 (117.29)	4.761 (120.93)
QSPK25-AC05916	59		4.697 (119.31)	4.841 (122.95)
QSPK25-AC06016	60	.500 (12.7)	4.777 (121.33)	4.920 (124.98)
QSPK25-AC06116	61		4.856 (123.35)	5.000 (127)
QSPK25-AC06216	62		4.936 (125.37)	5.080 (129.02)
QSPK25-AC06316	63	.500 (12.7)	5.015 (127.39)	5.159 (131.04)
QSPK25-AC06416	64		5.095 (129.41)	5.239 (133.07)
QSPK25-AC06516	65		5.175 (131.43)	5.319 (135.09)
QSPK25-AC06616	66	.500 (12.7)	5.254 (133.45)	5.398 (137.11)
QSPK25-AC06716	67		5.334 (135.47)	5.478 (139.14)
QSPK25-AC06816	68		5.413 (137.5)	5.557 (141.16)
QSPK25-AC06916	69	.500 (12.7)	5.493 (139.52)	5.637 (143.18)
QSPK25-AC07016	70		5.572 (141.54)	5.717 (145.2)
QSPK25-AC07216	72		5.731 (145.58)	5.876 (149.25)
QSPK25-AC07516	75	.500 (12.7)	5.970 (151.64)	6.115 (155.32)
QSPK25-AC07616	76		6.050 (153.66)	6.194 (157.34)
QSPK25-AC07816	78		6.209 (157.7)	6.354 (161.38)
QSPK25-AC08016	80	.500 (12.7)	6.368 (161.74)	6.513 (165.43)
QSPK25-AC08516	85		6.766 (171.85)	6.911 (175.54)
QSPK25-AC09016	90		7.163 (181.95)	7.309 (185.65)
QSPK25-AC09516	95	.500 (12.7)	7.561 (192.06)	7.707 (195.76)
QSPK25-AC10016	100		7.959 (202.16)	8.105 (205.87)
QSPK25-AC11016	110		8.755 (222.37)	8.901 (226.09)
QSPK25-AC12016	120	.500 (12.7)	9.550 (242.58)	9.697 (246.31)
QSPK25-AC12516	125		9.948 (252.69)	10.095 (256.42)

B Type Sprockets

ANSI B29.1



MATERIAL:
S45c AISI 1045 Steel
FINISH:
Black Oxide

Dimensions in () are mm.

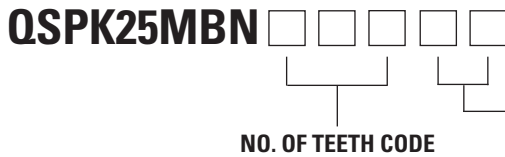
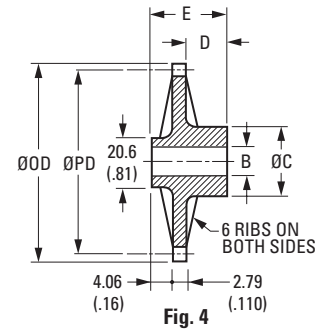
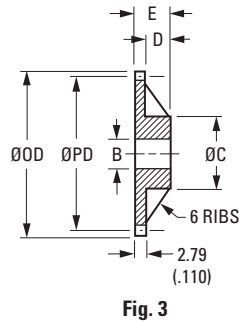
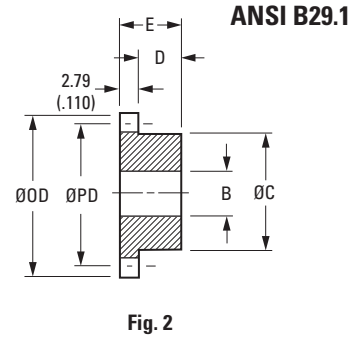
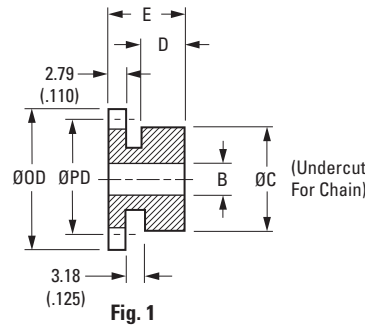
Catalog Number	No. of Teeth	Bore $\begin{matrix} +.001 & (+0.025) \\ -.000 & 0 \end{matrix}$	Pitch Diameter ØPD	ØOD $\begin{matrix} +.000 & 0 \\ -.005 & -0.127 \end{matrix}$	Hub Diameter ØE	Overall Length L	F	Set Screw
QSPK25-BC00908	9		.731 (18.57)	.837 (21.26)	.44 (11.1)			
QSPK25-BC01008	10	.250 (6.35)	.809 (20.55)	.919 (23.35)	.50 (12.7)	.500 (12.7)	.187 (4.75)	#10-32
QSPK25-BC01108	11		.887 (22.54)	1.001 (25.44)	.56 (14.3)			
QSPK25-BC01208	12		.966 (24.53)	1.083 (27.51)	.63 (15.9)			
QSPK25-BC01308	13	.250 (6.35)	1.045 (26.53)	1.164 (29.57)	.72 (18.3)	.500 (12.7)	.187 (4.75)	#10-32
QSPK25-BC01408	14		1.123 (28.54)	1.245 (31.63)	.81 (20.6)			
QSPK25-BC01508	15		1.202 (30.54)	1.326 (33.68)	.88 (22.2)			
QSPK25-BC01608	16	.250 (6.35)	1.281 (32.55)	1.407 (35.73)	.97 (24.6)	.500 (12.7)	.187 (4.75)	#10-32
QSPK25-BC01708	17		1.361 (34.56)	1.487 (37.78)	1.03 (26.2)			
QSPK25-BC01808	18		1.440 (36.57)	1.568 (39.82)	1.13 (28.6)	.500 (12.7)		
QSPK25-BC01908	19	.250 (6.35)	1.519 (38.58)	1.648 (41.86)	1.22 (31)	.500 (12.7)	.187 (4.75)	#10-32
QSPK25-BC02008	20		1.598 (40.59)	1.728 (43.9)	1.28 (32.5)	.625 (15.9)		
QSPK25-BC02108	21		1.677 (42.61)	1.809 (45.94)	1.38 (34.9)			
QSPK25-BC02208	22	.250 (6.35)	1.757 (44.62)	1.889 (47.98)	1.44 (36.5)	.625 (15.9)	.187 (4.75)	#10-32
QSPK25-BC02308	23		1.836 (46.63)	1.969 (50.01)	1.50 (38.1)			
QSPK25-BC02412	24		1.915 (48.65)	2.049 (52.04)				
QSPK25-BC02512	25	.375 (9.53)	1.995 (50.66)	2.129 (54.08)	1.50 (38.1)	.625 (15.9)	.187 (4.75)	#10-32
QSPK25-BC02612	26		2.074 (52.68)	2.209 (56.11)				
QSPK25-BC02812	28		2.233 (56.71)	2.369 (60.17)			.187 (4.75)	#10-32
QSPK25-BC03012	30	.375 (9.53)	2.392 (60.75)	2.529 (64.23)	1.50 (38.1)	.625 (15.9)	.187 (4.75)	#10-32
QSPK25-BC03112	31		2.471 (62.77)	2.608 (66.25)			.250 (6.35)	1/4-20
QSPK25-BC03212	32	.375 (9.53)	2.551 (64.78)	2.688 (68.28)	1.50 (38.1)	.625 (15.9)		#10-32
QSPK25-BC03612	36	.375 (9.53)	2.868 (72.86)	3.008 (76.39)	1.50 (38.1)	.625 (15.9)	.250 (6.35)	#10-32
QSPK25-BC04016	40	.500 (12.7)	3.186 (80.93)	3.327 (84.49)	2.00 (50.8)	.750 (19.1)		1/4-20
QSPK25-BC04516	45		3.584 (91.03)	3.725 (94.62)				
QSPK25-BC04816	48	.500 (12.7)	3.822 (97.09)	3.964 (100.69)	2.00 (50.8)	.750 (19.1)	.250 (6.35)	1/4-20
QSPK25-BC05416	54		4.300 (109.21)	4.442 (112.84)				
QSPK25-BC06016	60		4.777 (121.33)	4.920 (124.98)				
QSPK25-BC07016	70	.500 (12.7)	5.572 (141.54)	5.717 (145.2)	2.00 (50.8)	.750 (19.1)	.250 (6.35)	1/4-20
QSPK25-BC07216	72		5.731 (145.58)	5.876 (149.25)				

B Type Sprockets

www.econobelt.com



MATERIAL:
Molded Nylon Reinforced with Fiberglass



BORE CODE	Bore B	Tolerance
06	6 mm (.236)	6.01/6.03 (.2366/.2374)
08	8 mm (.315)	8.01/8.03 (.3154/.3161)
10	10 mm (.394)	10.01/10.03 (.3941/.3949)
12	12 mm (.472)	12.01/12.03 (.4728/.4736)

Dimensions in () are inch.

No. of Teeth Code	No. of Teeth	Fig.	Bore B $+0.038$ $(+0.0015)$ 0 (-0.0000)				Pitch Diameter ØPD	Outside Diameter ØOD	Hub Diameter ØC	Hub Projection D	Length E
			6	8	10	12					
009	9	1	•	•	•	•	18.57 (.731)	21.59 (.850)	20.57 (.81)	7.87 (.31)	13.97 (.55)
010	10		•	•	•	•	20.55 (.809)	23.65 (.931)			
011	11		•	•	•	•	22.53 (.887)	25.65 (1.010)			
012	12	1	•	•	•	•	22.77 (.966)	27.74 (1.092)	20.57 (.81)	7.87 (.31)	13.97 (.55)
013	13	1	•	•	•	•	26.54 (1.045)	29.72 (1.170)			
014	14	2	•	•	•	•	28.52 (1.123)	31.75 (1.250)			
015	15	2	•	•	•	•	30.53 (1.202)	33.83 (1.332)	20.57 (.81)	7.87 (.31)	13.97 (.55)
016	16	3	•	•	•	•	32.54 (1.281)	35.86 (1.412)			
017	17	3	•	•	•	•	34.54 (1.360)	37.92 (1.493)			
018	18	3	•	•	•	•	36.55 (1.439)	39.95 (1.573)	25.4 (1.00)	7.87 (.31)	10.67 (.42)
019	19		•	•	•	•	38.58 (1.519)	42.01 (1.654)			
020	20		•	•	•	•	40.59 (1.598)	43.97 (1.731)			
021	21	3	•	•	•	•	42.6 (1.677)	46.05 (1.813)	25.4 (1.00)	7.87 (.31)	10.67 (.42)
022	22		•	•	•	•	44.63 (1.757)	48.06 (1.892)			
023	23		•	•	•	•	46.63 (1.836)	50.09 (1.972)			
024	24	3	•	•	•	•	48.64 (1.915)	52.12 (2.052)	25.4 (1.00)	7.87 (.31)	10.67 (.42)
026	26		•	•	•	•	52.68 (2.074)	56.24 (2.214)			
028	28		•	•	•	•	56.72 (2.233)	60.15 (2.368)			
030	30	3	•	•	•	•	60.76 (2.392)	66.24 (2.529)	25.4 (1.00)	7.87 (.31)	10.67 (.42)
032	32		•	•	•	•	64.77 (2.550)	68.22 (2.686)			
036	36		•	•	•	•	72.85 (2.868)	76.28 (3.003)			
040	40	4	•	•	•	•	80.92 (3.186)	84.3 (3.319)	25.4 (1.00)	7.87 (.31)	14.73 (.58)
042	42		•	•	•	•	84.96 (3.345)	88.49 (3.484)			
045	45		•	•	•	•	91 (3.583)	94.39 (3.716)			
048	48		•	•	•	•	97.08 (3.822)	100.46 (3.955)			

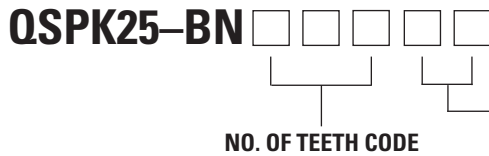
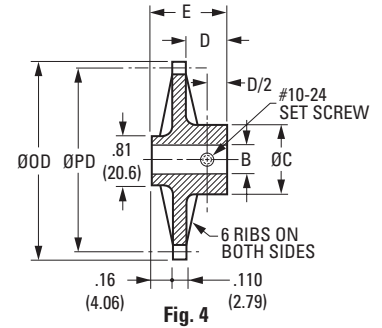
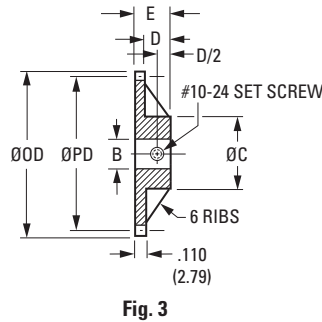
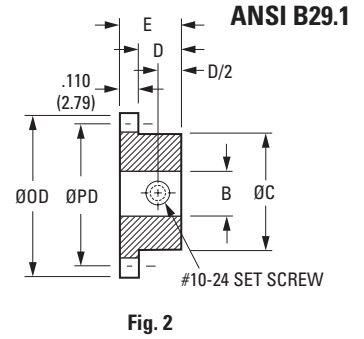
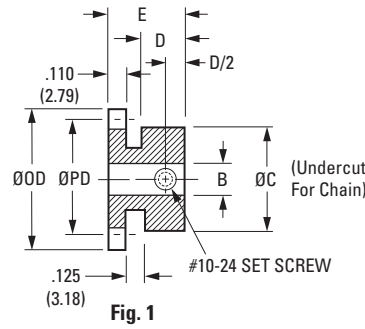
NOTE: These sprockets are designed for use with either #25 or 1/4" pitch roller or ladder chain.

B Type Sprockets

www.econobelt.com



MATERIAL:
Molded Nylon Reinforced with Fiberglass



BORE CODE	Bore B	Tolerance
08	1/4 (6.35)	.2505/.2515 (6.363/6.388)
12	3/8 (9.525)	.3755/.3765 (9.538/9.563)
16	1/2 (12.7)	.5005/.5015 (12.713/12.738)

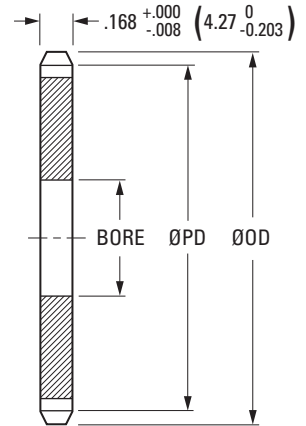
Dimensions in () are mm.

No. of Teeth Code	No. of Teeth	Fig.	Bore B $\begin{matrix} +.0015 \\ -.0000 \\ (+0.038 \\ 0) \end{matrix}$			Pitch Diameter ØPD	Outside Diameter ØOD	Hub Diameter ØC	Hub Projection D	Length E
			1/4	3/8	1/2					
009	9	1	•	•	•	.731 (18.57)	.850 (21.59)	.81 (20.57)	.31 (7.87)	.55 (13.97)
010	10		•	•	•	.809 (20.55)	.931 (23.65)			
011	11		•	•	•	.887 (22.53)	1.010 (25.65)			
012	12	1	•	•	•	.966 (22.77)	1.092 (27.74)			
013	13	1	•	•	•	1.045 (26.54)	1.170 (29.72)	.81 (20.57)	.31 (7.87)	.55 (13.97)
014	14	2	•	•	•	1.123 (28.52)	1.250 (31.75)			
015	15	2	•	•	•	1.202 (30.53)	1.332 (33.83)	.81 (20.57)		.55 (13.97)
016	16	3	•	•	•	1.281 (32.54)	1.412 (35.86)	1.00 (25.4)	.31 (7.87)	.42 (10.67)
017	17	3	•	•	•	1.360 (34.54)	1.493 (37.92)	1.00 (25.4)		.42 (10.67)
018	18	3	•	•	•	1.439 (36.55)	1.573 (39.95)			
019	19		•	•	•	1.519 (38.58)	1.654 (42.01)	1.00 (25.4)	.31 (7.87)	.42 (10.67)
020	20		•	•	•	1.598 (40.59)	1.731 (43.97)			
021	21	3	•	•	•	1.677 (42.6)	1.813 (46.05)			
022	22		•	•	•	1.757 (44.63)	1.892 (48.06)	1.00 (25.4)	.31 (7.87)	.42 (10.67)
023	23		•	•	•	1.836 (46.63)	1.972 (50.09)			
024	24	3	•	•	•	1.915 (48.64)	2.052 (52.12)			
026	26		•	•	•	2.074 (52.68)	2.214 (56.24)	1.00 (25.4)	.31 (7.87)	.42 (10.67)
028	28		•	•	•	2.233 (56.72)	2.368 (60.15)			
030	30	3	•	•	•	2.392 (60.76)	2.529 (66.24)			.42 (10.67)
032	32	4	•	•	•	2.550 (64.77)	2.686 (68.22)	1.00 (25.4)	.31 (7.87)	.58 (14.73)
036	36	4	•	•	•	2.868 (72.85)	3.003 (76.28)			.58 (14.73)
040	40	4	•	•	•	3.186 (80.92)	3.319 (84.3)			
042	42		•	•	•	3.345 (84.96)	3.484 (88.49)	1.00 (25.4)	.31 (7.87)	.58 (14.73)
045	45		•	•	•	3.583 (91)	3.716 (94.39)			
048	48		•	•	•	3.822 (97.08)	3.955 (100.46)			

NOTE: These sprockets are designed for use with either #25 or 1/4" pitch roller or ladder chain.

A Type Sprockets

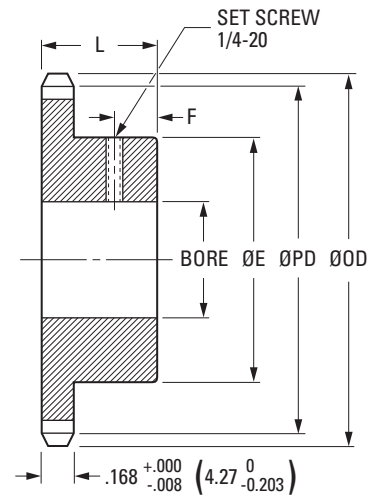
ANSI B29.1



MATERIAL:
S45c AISI 1045 Steel
FINISH:
Black Oxide

Dimensions in () are mm.

Catalog Number	No. of Teeth	Bore $\begin{matrix} +.001 & (+0.025) \\ -.000 & 0 \end{matrix}$	Pitch Diameter ØPD	ØOD $\begin{matrix} +.000 & 0 \\ -.005 & -0.127 \end{matrix}$
QSPK35-AC01516	15	.500 (12.7)	1.683 (42.76)	1.857 (47.2)
QSPK35-AC01616	16		1.794 (45.57)	1.970 (50)
QSPK35-AC01716	17		1.905 (48.38)	2.082 (52.9)
QSPK35-AC01816	18	.500 (12.7)	2.016 (51.2)	2.195 (55.8)
QSPK35-AC01916	19		2.126 (54.01)	2.307 (58.6)
QSPK35-AC02016	20		2.237 (56.83)	2.420 (61.5)
QSPK35-AC02116	21	.500 (12.7)	2.348 (59.65)	2.532 (64.3)
QSPK35-AC02216	22		2.459 (62.47)	2.644 (67.2)
QSPK35-AC02316	23		2.570 (65.29)	2.756 (70)
QSPK35-AC02416	24	.500 (12.7)	2.681 (68.11)	2.869 (72.9)
QSPK35-AC02516	25		2.793 (70.93)	2.981 (75.7)
QSPK35-AC02616	26		2.904 (73.75)	3.093 (78.5)
QSPK35-AC02716	27	.500 (12.7)	3.015 (76.58)	3.204 (81.4)
QSPK35-AC02816	28		3.126 (79.4)	3.316 (84.2)
QSPK35-AC03016	30		3.348 (85.05)	3.540 (89.9)
QSPK35-AC03216	32	.500 (12.7)	3.571 (90.7)	3.764 (95.6)
QSPK35-AC03520	35	.625 (15.88)	3.905 (99.18)	4.099 (104.1)
QSPK35-AC03620	36	.625 (15.88)	4.016 (102)	4.211 (106.9)
QSPK35-AC04020	40	.625 (15.88)	4.461 (113.31)	4.657 (118.3)
QSPK35-AC04220	42		4.684 (118.96)	4.880 (124)
QSPK35-AC04520	45		5.017 (127.44)	5.215 (132.5)
QSPK35-AC04820	48	.625 (15.88)	5.351 (135.93)	5.550 (141)
QSPK35-AC05420	54	.625 (15.88)	6.019 (152.89)	6.219 (158)
QSPK35-AC06024	60	.750 (19.05)	6.688 (169.86)	6.888 (175)
QSPK35-AC07024	70	.750 (19.05)	7.801 (198.15)	8.003 (203.3)
QSPK35-AC07224	72		8.024 (203.81)	8.226 (208.9)
QSPK35-AC08024	80		8.915 (226.44)	9.118 (231.6)
QSPK35-AC08424	84	.750 (19.05)	9.360 (237.76)	9.564 (242.9)
QSPK35-AC09624	96		10.697 (271.71)	10.901 (276.9)
QSPK35-AC10024	100		11.143 (283.02)	11.347 (288.2)
QSPK35-AC11224	112		12.479 (316.98)	12.684 (322.2)

**MATERIAL:**

S45c AISI 1045 Steel

FINISH:

Black Oxide

Dimensions in () are mm.

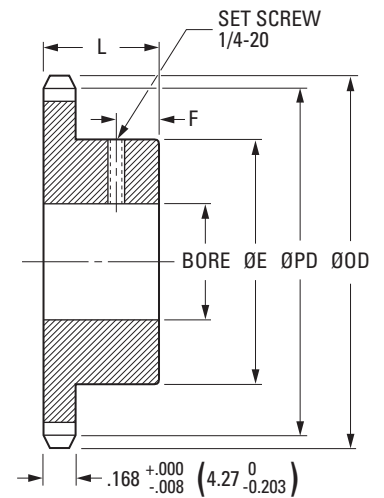
Catalog Number	No. of Teeth	Bore $+0.001 \begin{matrix} +0.025 \\ -0.000 \end{matrix} \begin{matrix} 0 \\ 0 \end{matrix}$	Pitch Diameter ØPD	ØOD $+0.000 \begin{matrix} 0 \\ -0.005 \end{matrix}$	Hub Diameter ØE	Overall Length L	F
QSPK35-BC00812	8	.375 (9.53)	.915 (23.23)	1.055 (26.8)	.75 (19.1)	.750 (19.1)	.250 (6.35)
QSPK35-BC00912	9		1.023 (25.99)	1.172 (29.8)			
QSPK35-BC01012	10	.375 (9.53)	1.133 (28.77)	1.287 (32.7)	.88 (22.2)	.750 (19.1)	.250 (6.35)
QSPK35-BC01112	11		1.242 (31.55)	1.402 (35.6)	1.00 (25.4)		
QSPK35-BC01216	12	.500 (12.7)	1.352 (34.35)	1.516 (38.5)	1.13 (28.6)	.750 (19.1)	.250 (6.35)
QSPK35-BC01316	13		1.463 (37.15)	1.630 (41.4)	1.25 (31.8)		
QSPK35-BC01416	14		1.573 (39.95)	1.743 (44.3)	1.25 (31.8)		
QSPK35-BC01516	15		1.683 (42.76)	1.857 (47.2)	1.38 (34.9)		
QSPK35-BC01616	16	.500 (12.7)	1.794 (45.57)	1.970 (50)	1.50 (38.1)	.750 (19.1)	.250 (6.35)
QSPK35-BC01716	17		1.905 (48.38)	2.082 (52.9)	1.63 (41.3)		
QSPK35-BC01816	18		2.016 (51.2)	2.195 (55.8)	1.75 (44.5)		
QSPK35-BC01916	19	.500 (12.7)	2.126 (54.01)	2.307 (58.6)	1.88 (47.6)	.750 (19.1)	.250 (6.35)
QSPK35-BC02016	20		2.237 (56.83)	2.420 (61.5)	2.00 (50.8)		
QSPK35-BC02116	21		2.348 (59.65)	2.532 (64.3)	2.532 (64.3)		
QSPK35-BC02216	22	.500 (12.7)	2.459 (62.47)	2.644 (67.2)	2.00 (50.8)	.875 (22.2)	.375 (9.53)
QSPK35-BC02316	23		2.570 (65.29)	2.756 (70)			
QSPK35-BC02416	24		2.681 (68.11)	2.869 (72.9)	2.00 (50.8)		
QSPK35-BC02516	25	.500 (12.7)	2.793 (70.93)	2.981 (75.7)	2.00 (50.8)	.875 (22.2)	.375 (9.53)
QSPK35-BC02616	26		2.904 (73.75)	3.093 (78.5)			
QSPK35-BC02716	27		3.015 (76.58)	3.204 (81.4)	2.00 (50.8)		
QSPK35-BC02816	28		3.126 (79.4)	3.316 (84.2)	2.00 (50.8)		
QSPK35-BC03016	30	.500 (12.7)	3.348 (85.05)	3.540 (89.9)	2.00 (50.8)	.875 (22.2)	.375 (9.53)
QSPK35-BC03216	32		3.571 (90.7)	3.764 (95.6)	2.25 (57.2)		

Larger numbers of teeth on the next page

 SPROCKETS
 ISO 04B
 ISO 05B
 ISO 06B
 ISO 08B
 ISO 10B
 No. 25
 No. 35
 No. 40
 No. 41
 No. 50
 Roller Chains

B Type Sprockets

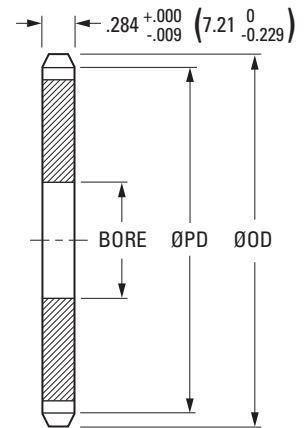
ANSI B29.1



MATERIAL:
S45c AISI 1045 Steel
FINISH:
Black Oxide

Dimensions in () are mm.

Catalog Number	No. of Teeth	Bore $\begin{matrix} +.001 & (+0.025) \\ -.000 & 0 \end{matrix}$	Pitch Diameter ØPD	ØOD $\begin{matrix} +.000 & 0 \\ -.005 & -0.127 \end{matrix}$	Hub Diameter ØE	Overall Length L	F
QSPK35-BC03520	35		3.905 (99.18)	4.099 (104.1)		.875 (22.2)	.375 (9.53)
QSPK35-BC03620	36	.625 (15.88)	4.016 (102)	4.211 (106.9)	2.25 (57.2)	.875 (22.2)	.375 (9.53)
QSPK35-BC04020	40		4.461 (113.31)	4.657 (118.3)		1.000 (25.4)	.500 (12.7)
QSPK35-BC04220	42		4.684 (118.96)	4.880 (124)			
QSPK35-BC04520	45	.625 (15.88)	5.017 (127.44)	5.215 (132.5)	2.25 (57.2)	1.000 (25.4)	.500 (12.7)
QSPK35-BC04820	48		5.351 (135.93)	5.550 (141)			
QSPK35-BC05420	54		6.019 (152.89)	6.219 (158)			
QSPK35-BC06024	60	.750 (19.05)	6.688 (169.86)	6.888 (175)	2.25 (57.2)	1.000 (25.4)	.500 (12.7)
QSPK35-BC07024	70		7.801 (198.15)	8.003 (203.3)			
QSPK35-BC07224	72		8.024 (203.81)	8.226 (208.9)			
QSPK35-BC08024	80	.750 (19.05)	8.915 (226.44)	9.118 (231.6)	2.25 (57.2)	1.000 (25.4)	.500 (12.7)
QSPK35-BC08424	84		9.360 (237.76)	9.564 (242.9)			
QSPK35-BC09624	96		10.697 (271.71)	10.901 (276.9)			
QSPK35-BC10024	100	.750 (19.05)	11.143 (283.02)	11.347 (288.2)	2.25 (57.2)	1.000 (25.4)	.500 (12.7)
QSPK35-BC11224	112		12.479 (316.98)	12.684 (322.2)			

**MATERIAL:**

S45c AISI 1045 Steel

FINISH:

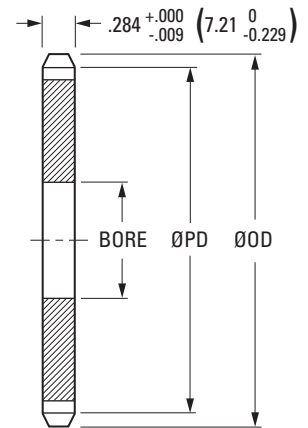
Black Oxide

Dimensions in () are mm.

Catalog Number	No. of Teeth	Bore $+.001 \begin{pmatrix} +0.025 \\ -0.000 \end{pmatrix} \begin{pmatrix} 0 \\ 0 \end{pmatrix}$	Pitch Diameter ØPD	ØOD $+.000 \begin{pmatrix} 0 \\ -0.005 \end{pmatrix} \begin{pmatrix} 0 \\ -0.127 \end{pmatrix}$
QSPK40-AC01216	12		1.932 (49.07)	2.166 (55)
QSPK40-AC01316	13	.500 (12.7)	2.089 (53.07)	2.329 (59.1)
QSPK40-AC01416	14		2.247 (57.07)	2.491 (63.3)
QSPK40-AC01520	15		2.405 (61.08)	2.652 (67.4)
QSPK40-AC01620	16	.625 (15.88)	2.563 (65.1)	2.814 (71.5)
QSPK40-AC01720	17		2.721 (69.12)	2.975 (75.6)
QSPK40-AC01820	18		2.879 (73.14)	3.136 (79.6)
QSPK40-AC01920	19	.625 (15.88)	3.038 (77.16)	3.296 (83.7)
QSPK40-AC02020	20		3.196 (81.18)	3.457 (87.8)
QSPK40-AC02120	21		3.355 (85.21)	3.617 (91.9)
QSPK40-AC02220	22	.625 (15.88)	3.513 (89.24)	3.778 (96)
QSPK40-AC02320	23		3.672 (93.27)	3.937 (100)
QSPK40-AC02420	24		3.831 (97.3)	4.098 (104.1)
QSPK40-AC02520	25	.625 (15.88)	3.989 (101.33)	4.258 (108.2)
QSPK40-AC02620	26		4.148 (105.36)	4.418 (112.2)
QSPK40-AC02720	27		4.307 (109.4)	4.578 (116.3)
QSPK40-AC02820	28	.625 (15.88)	4.466 (113.43)	4.738 (120.3)
QSPK40-AC02920	29		4.625 (117.46)	4.897 (124.4)
QSPK40-AC03020	30		4.783 (121.5)	5.057 (128.5)
QSPK40-AC03120	31	.625 (15.88)	4.942 (125.53)	5.217 (132.5)
QSPK40-AC03220	32		5.101 (129.57)	5.377 (138.6)
QSPK40-AC03320	33		5.260 (133.61)	5.536 (140.6)
QSPK40-AC03420	34	.625 (15.88)	5.419 (137.64)	5.696 (144.7)
QSPK40-AC03520	35		5.578 (141.68)	5.855 (148.7)
QSPK40-AC03620	36		5.737 (145.72)	6.015 (152.8)
QSPK40-AC03720	37	.625 (15.88)	5.896 (149.75)	6.175 (156.8)
QSPK40-AC03820	38		6.055 (153.79)	6.334 (160.9)
QSPK40-AC03920	39	.625 (15.88)	6.214 (157.83)	6.494 (164.9)
QSPK40-AC04024	40		6.373 (161.87)	6.653 (169)
QSPK40-AC04124	41	.750 (19.05)	6.532 (165.91)	6.813 (173)
QSPK40-AC04224	42		6.691 (169.94)	6.972 (177.1)

Larger numbers of teeth on the next page

 SPROCKETS
 ISO 04B
 ISO 05B
 ISO 06B
 ISO 08B
 ISO 10B
 No. 25
 No. 35
 No. 40
 No. 41
 No. 50
 Roller Chains

**MATERIAL:**

S45c AISI 1045 Steel

FINISH:

Black Oxide

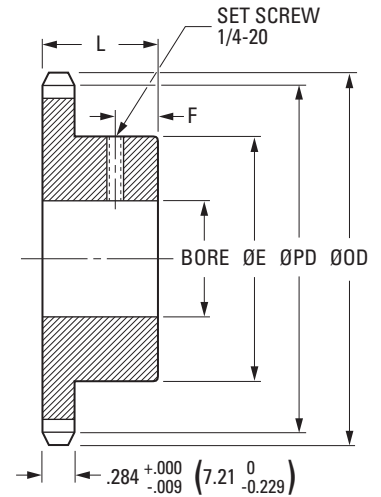
Dimensions in () are mm.

Catalog Number	No. of Teeth	Bore $\begin{matrix} +.001 & (+0.025) \\ -.000 & 0 \end{matrix}$	Pitch Diameter ØPD	ØOD $\begin{matrix} +.000 & 0 \\ -.005 & -0.127 \end{matrix}$
QSPK40-AC04324	43	.750 (19.05)	6.850 (173.98)	7.131 (181.1)
QSPK40-AC04424	44	.750 (19.05)	7.009 (178.02)	7.291 (185.2)
QSPK40-AC04524	45	.750 (19.05)	7.168 (182.06)	7.450 (189.2)
QSPK40-AC04624	46	.750 (19.05)	7.327 (186.1)	7.610 (193.3)
QSPK40-AC04724	47	.750 (19.05)	7.486 (190.14)	7.769 (197.3)
QSPK40-AC04824	48	.750 (19.05)	7.645 (194.18)	7.929 (210.4)
QSPK40-AC04924	49	.750 (19.05)	7.804 (198.22)	8.088 (205.4)
QSPK40-AC05024	50	.750 (19.05)	7.963 (202.26)	8.247 (209.5)
QSPK40-AC05124	51	.750 (19.05)	8.122 (206.3)	8.407 (213.6)
QSPK40-AC05224	52	.750 (19.05)	8.281 (210.34)	8.567 (217.6)
QSPK40-AC05324	53	.750 (19.05)	8.440 (214.38)	8.725 (221.6)
QSPK40-AC05424	54	.750 (19.05)	8.599 (218.42)	8.685 (225.7)
QSPK40-AC05524	55	.750 (19.05)	8.758 (222.45)	9.044 (229.7)
QSPK40-AC05624	56	.750 (19.05)	8.917 (226.5)	9.203 (233.8)
QSPK40-AC05724	57	.750 (19.05)	9.078 (230.54)	9.363 (237.6)
QSPK40-AC05824	58	.750 (19.05)	9.236 (234.58)	9.522 (241.9)
QSPK40-AC05924	59	.750 (19.05)	9.395 (238.62)	9.681 (245.9)
QSPK40-AC06024	60	.750 (19.05)	9.554 (242.66)	9.843 (250)
QSPK40-AC07024	70	.750 (19.05)	11.145 (283.07)	11.433 (290.4)
QSPK40-AC07224	72	.750 (19.05)	11.463 (291.15)	11.752 (298.6)
QSPK40-AC08024	80	.750 (19.05)	12.736 (323.49)	13.026 (330.9)
QSPK40-AC08424	84	.750 (19.05)	13.372 (339.65)	13.663 (347)
QSPK40-AC09532	95	1.000 (25.4)	15.282 (388.15)	15.673 (395.6)
QSPK40-AC10032	100	1.000 (25.4)	15.918 (404.32)	16.210 (411.7)
QSPK40-AC11232	112	1.000 (25.4)	17.828 (452.82)	18.121 (460.3)



B Type Sprockets

ANSI B29.1



MATERIAL:
S45c AISI 1045 Steel
FINISH:
Black Oxide

Dimensions in () are mm.

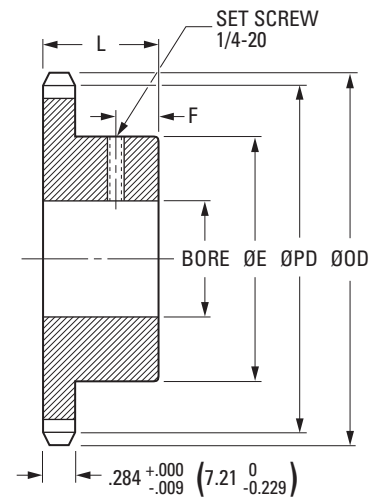
Catalog Number	No. of Teeth	Bore $\begin{matrix} +.001 & (+0.025) \\ -.000 & 0 \end{matrix}$	Pitch Diameter ØPD	ØOD $\begin{matrix} +.000 & 0 \\ -.005 & -0.127 \end{matrix}$	Hub Diameter ØE	Overall Length L	F
QSPK40-BC00816	8	.500 (12.70)	1.307 (33.19)	1.507 (38.3)	.97 (24.6)	.875 (22.23)	.300
QSPK40-BC00916	9	.500 (12.70)	1.462 (37.13)	1.674 (42.5)	1.13 (28.6)	.875 (22.23)	.300
QSPK40-BC01016	10	.500 (12.70)	1.618 (41.1)	1.839 (46.7)	1.28 (32.5)	.875 (22.23)	.300
QSPK40-BC01116	11	.500 (12.70)	1.775 (45.08)	2.003 (50.9)	1.44 (36.5)	.875 (22.23)	.300
QSPK40-BC01216	12	.500 (12.70)	1.932 (49.07)	2.166 (55)	1.59 (40.5)	.875 (22.23)	.300
QSPK40-BC01316	13	.500 (12.70)	2.089 (53.07)	2.329 (59.1)	1.75 (44.5)	.875 (22.23)	.300
QSPK40-BC01416	14	.500 (12.70)	2.247 (57.07)	2.491 (63.3)	1.88 (47.6)	.875 (22.23)	.300
QSPK40-BC01516	15	.500 (12.70)	2.405 (61.08)	2.652 (67.4)	2.00 (50.8)	.875 (22.23)	.300
QSPK40-BC01620	16	.625 (15.88)	2.563 (65.1)	2.814 (71.5)	2.06 (52.4)	.875 (22.23)	.300
QSPK40-BC01720	17	.625 (15.88)	2.721 (69.12)	2.975 (75.6)	2.19 (55.6)	.875 (22.23)	.300
QSPK40-BC01820	18	.625 (15.88)	2.879 (73.14)	3.136 (79.6)	2.38 (60.3)	.875 (22.23)	.300
QSPK40-BC01920	19	.625 (15.88)	3.038 (77.16)	3.296 (83.7)	2.50 (63.5)	.875 (22.23)	.300
QSPK40-BC02020	20	.625 (15.88)	3.196 (81.18)	3.457 (87.8)	2.63 (66.7)	.938 (23.81)	.313
QSPK40-BC02120	21	.625 (15.88)	3.355 (85.21)	3.617 (91.9)	2.75 (69.9)	.938 (23.81)	.313
QSPK40-BC02220	22	.625 (15.88)	3.513 (89.24)	3.778 (96)	2.88 (73)	.938 (23.81)	.313
QSPK40-BC02320	23	.625 (15.88)	3.672 (93.27)	3.938 (100)	3.00 (76.2)	.938 (23.81)	.313
QSPK40-BC02420	24	.625 (15.88)	3.831 (97.3)	4.098 (104.1)	3.25 (82.6)	.938 (23.81)	.313
QSPK40-BC02520	25	.625 (15.88)	3.989 (101.33)	4.258 (108.2)	3.25 (82.6)	.938 (23.81)	.313
QSPK40-BC02620	26	.625 (15.88)	4.148 (105.36)	4.418 (112.2)	3.25 (82.6)	.938 (23.81)	.313
QSPK40-BC02720	27	.625 (15.88)	4.307 (109.4)	4.578 (116.3)	3.25 (82.6)	.938 (23.81)	.313
QSPK40-BC02820	28	.625 (15.88)	4.466 (113.43)	4.738 (120.3)	3.25 (82.6)	.938 (23.81)	.313

Larger numbers of teeth on the next page

SPROCKETS ISO 04B ISO 05B ISO 06B ISO 08B ISO 10B No. 25 No. 35 No. 40 No. 50 Roller Chains

B Type Sprockets

ANSI B29.1



MATERIAL:

S45c AISI 1045 Steel

FINISH:

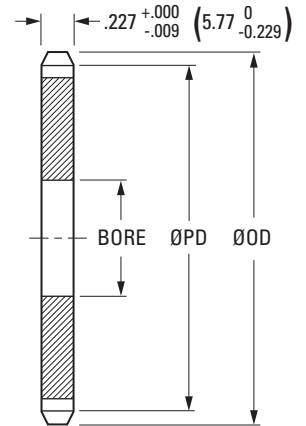
Black Oxide

Dimensions in () are mm.

Catalog Number	No. of Teeth	Bore $\begin{matrix} +.001 & (+0.025) \\ -.000 & 0 \end{matrix}$	Pitch Diameter ØPD	ØOD $\begin{matrix} +.000 & 0 \\ -.005 & -0.127 \end{matrix}$	Hub Diameter ØE	Overall Length L	F
QSPK40-BC03020	30		4.783 (121.5)	5.057 (128.5)			
QSPK40-BC03220	32	.625 (15.88)	5.101 (129.57)	5.377 (136.6)	3.25 (82.6)	.938 (23.81)	.313
QSPK40-BC03320	33		5.260 (133.61)	5.536 (140.6)			
QSPK40-BC03420	34		5.419 (137.64)	5.696 (144.7)			
QSPK40-BC03520	35	.625 (15.88)	5.578 (141.68)	5.855 (148.7)	3.25 (82.6)	.938 (23.81)	.313
QSPK40-BC03620	36		5.737 (145.72)	6.015 (152.8)			
QSPK40-BC03820	38		6.055 (153.79)	6.334 (160.9)	3.25 (82.6)		
QSPK40-BC04020	40	.625 (15.88)	6.373 (161.87)	6.653 (169)	3.50 (88.9)	.938 (23.81)	.313
QSPK40-BC04120	41		6.532 (165.91)	6.813 (173)	3.50 (88.9)		
QSPK40-BC04520	45		7.168 (182.06)	7.450 (189.2)			
QSPK40-BC04720	47	.625 (15.88)	7.486 (190.14)	7.769 (197.3)	3.50 (88.9)	.938 (23.81)	.313
QSPK40-BC04820	48		7.645 (194.18)	7.929 (201.4)			
QSPK40-BC05020	50		7.963 (202.26)	8.247 (209.5)			
QSPK40-BC05420	54	.625 (15.88)	8.599 (218.42)	8.885 (225.7)	3.50 (88.9)	.938 (23.81)	.313
QSPK40-BC06020	60		9.554 (242.66)	9.841 (250)			
QSPK40-BC07220	72		11.463 (291.15)	11.752 (298.5)		.938 (23.81)	.313
QSPK40-BC08020	80	.625 (15.88)	12.736 (323.49)	13.026 (330.9)	4.00 (101.6)	.938 (23.81)	.313
QSPK40-BC08420	84		13.372 (339.65)	13.663 (347)		1.000 (25.4)	.375
QSPK40-BC09620	96		15.282 (388.15)	15.573 (396.6)			
QSPK40-BC10020	100	.625 (15.88)	15.918 (404.32)	16.210 (411.7)	4.00 (101.6)	1.000 (25.4)	.375
QSPK40-BC11220	112		17.828 (452.82)	18.121 (460.3)			

A Type Sprockets

ANSI B29.1



MATERIAL:
S45c AISI 1045 Steel
FINISH:
Black Oxide

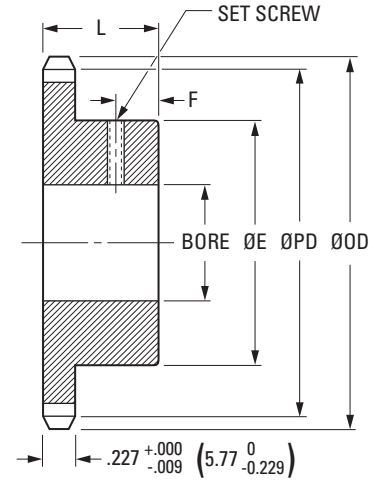
Dimensions in () are mm.

Catalog Number	No. of Teeth	Bore		Pitch Diameter ØPD		ØOD	
		+0.001 -0.000	(+0.025 0)			+0.000 -0.005	(0 -0.127)
QSPK41-AC01516	15	.500	(12.7)	2.405	(61.08)	2.652	(67.4)
QSPK41-AC01620	16	.625	(15.88)	2.563	(65.1)	2.814	(71.5)
QSPK41-AC01720	17	.625	(15.88)	2.721	(69.12)	2.975	(75.6)
QSPK41-AC01820	18	.625	(15.88)	2.879	(73.14)	3.136	(79.6)
QSPK41-AC01920	19	.625	(15.88)	3.038	(77.16)	3.296	(83.7)
QSPK41-AC02020	20	.625	(15.88)	3.196	(81.18)	3.457	(87.8)
QSPK41-AC02120	21	.625	(15.88)	3.355	(85.21)	3.617	(91.9)
QSPK41-AC02220	22	.625	(15.88)	3.513	(89.24)	3.778	(96)
QSPK41-AC02320	23	.625	(15.88)	3.672	(93.27)	3.938	(100)
QSPK41-AC02420	24	.625	(15.88)	3.831	(97.3)	4.098	(104.1)
QSPK41-AC02520	25	.625	(15.88)	3.989	(101.33)	4.258	(108.2)
QSPK41-AC02620	26	.625	(15.88)	4.148	(105.36)	4.418	(112.2)
QSPK41-AC02720	27	.625	(15.88)	4.307	(109.4)	4.578	(116.3)
QSPK41-AC02820	28	.625	(15.88)	4.466	(113.43)	4.738	(120.3)
QSPK41-AC03020	30	.625	(15.88)	4.783	(121.5)	5.057	(128.5)
QSPK41-AC03220	32	.625	(15.88)	5.101	(129.57)	5.377	(136.6)
QSPK41-AC03520	35	.625	(15.88)	5.578	(141.68)	5.855	(148.7)
QSPK41-AC03620	36	.625	(15.88)	5.737	(145.72)	6.015	(152.8)
QSPK41-AC04020	40	.625	(15.88)	6.373	(161.87)	6.653	(169)
QSPK41-AC04224	42	.750	(19.05)	6.691	(169.94)	6.972	(177.1)
QSPK41-AC04524	45	.750	(19.05)	7.168	(182.06)	7.450	(189.2)
QSPK41-AC04824	48	.750	(19.05)	7.645	(194.18)	7.929	(201.4)
QSPK41-AC05424	54	.750	(19.05)	8.599	(218.42)	8.885	(225.7)
QSPK41-AC06024	60	.750	(19.05)	9.554	(242.66)	9.841	(250)
QSPK41-AC07024	70	.750	(19.05)	11.145	(283.07)	11.433	(290.4)
QSPK41-AC07224	72	.750	(19.05)	11.463	(291.15)	11.752	(298.5)
QSPK41-AC08024	80	.750	(19.05)	12.736	(323.49)	13.026	(330.9)
QSPK41-AC08424	84	.750	(19.05)	13.372	(339.65)	13.663	(347)
QSPK41-AC09632	96	1.000	(25.4)	15.282	(388.15)	15.573	(395.6)
QSPK41-AC10032	100	1.000	(25.4)	15.918	(404.32)	16.210	(411.7)
QSPK41-AC11232	112	1.000	(25.4)	17.828	(452.82)	18.121	(460.3)

SPROCKETS ISO 04B ISO 05B ISO 06B ISO 08B ISO 10B No. 25 No. 35 No. 40 No. 41 No. 50 Roller Chains

B Type Sprockets

ANSI B29.1



MATERIAL:
S45c AISI 1045 Steel
FINISH:
Black Oxide

Dimensions in () are mm.

Catalog Number	No. of Teeth	Bore $\begin{matrix} +.001 & (+0.025) \\ -.000 & 0 \end{matrix}$	Pitch Diameter ØPD	ØOD $\begin{matrix} +.000 & 0 \\ -.005 & -0.127 \end{matrix}$	Hub Diameter ØE	Overall Length L	F	Set Screw
QSPK41-BC00612	6	.375 (9.53)	1.000 (25.4)	1.166 (29.6)	.66 (16.7)	.875 (22.2)	.313 (8)	#10-32
QSPK41-BC00712	7		1.152 (29.27)	1.338 (34)	.75 (19.1)			
QSPK41-BC00816	8	.500 (12.7)	1.307 (33.19)	1.507 (38.3)	.98 (25)	.875 (22.2)	.313 (8)	1/4-20
QSPK41-BC00916	9		1.462 (37.13)	1.674 (42.5)	1.13 (28.6)			
QSPK41-BC01016	10		1.618 (41.1)	1.839 (46.7)	1.25 (31.8)			
QSPK41-BC01116	11	.500 (12.7)	1.775 (45.08)	2.003 (50.9)	1.44 (36.5)	.875 (22.2)	.313 (8)	1/4-20
QSPK41-BC01216	12		1.932 (49.07)	2.166 (55)	1.56 (39.7)			
QSPK41-BC01316	13		2.089 (53.07)	2.329 (59.1)	1.56 (39.7)			
QSPK41-BC01416	14	.500 (12.7)	2.247 (57.07)	2.491 (63.3)	1.75 (44.5)	.875 (22.2)	.313 (8)	1/4-20
QSPK41-BC01516	15	.500 (12.7)	2.405 (61.08)	2.652 (67.4)	1.91 (48.4)			
QSPK41-BC01620	16	.625 (15.88)	2.563 (65.1)	2.814 (71.5)	2.06 (52.4)			
QSPK41-BC01720	17		2.721 (69.12)	2.975 (75.6)	2.23 (56.8)	1.000 (25.4)	.375 (9.5)	1/4-20
QSPK41-BC01820	18	.625 (15.88)	2.879 (73.14)	3.136 (79.6)	2.75 (69.9)			
QSPK41-BC01920	19		3.038 (77.16)	3.296 (83.7)	2.88 (73)			
QSPK41-BC02020	20	.625 (15.88)	3.196 (81.18)	3.457 (87.8)	3.00 (76.2)	1.000 (25.4)	.375 (9.5)	1/4-20
QSPK41-BC02120	21		3.355 (85.21)	3.617 (91.9)	3.19 (81)			
QSPK41-BC02220	22	.625 (15.88)	3.513 (89.24)	3.778 (96)	3.25 (82.6)	1.000 (25.4)	.375 (9.5)	1/4-20
QSPK41-BC02320	23		3.672 (93.27)	3.938 (100)				
QSPK41-BC02420	24	.625 (15.88)	3.831 (97.3)	4.098 (104.1)	3.25 (82.6)	1.000 (25.4)	.375 (9.5)	1/4-20
QSPK41-BC02520	25		3.989 (101.33)	4.258 (108.2)				
QSPK41-BC02620	26		4.148 (105.36)	4.418 (112.2)				
QSPK41-BC02720	27	.625 (15.88)	4.307 (109.4)	4.578 (116.3)	3.25 (82.6)	1.000 (25.4)	.375 (9.5)	1/4-20
QSPK41-BC02820	28		4.466 (113.43)	4.738 (120.3)				
QSPK41-BC03020	30		4.783 (121.5)	5.057 (128.5)				
QSPK41-BC03220	32	.625 (15.88)	5.101 (129.57)	5.377 (136.6)	3.25 (82.6)	1.000 (25.4)	.375 (9.5)	1/4-20
QSPK41-BC03520	35		5.578 (141.68)	5.855 (148.7)				
QSPK41-BC03620	36		5.737 (145.72)	6.015 (152.8)				

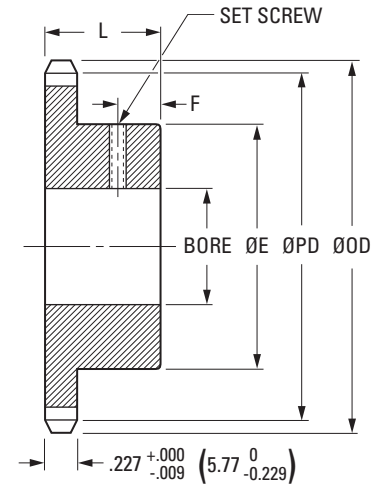
Larger numbers of teeth on the next page

**MATERIAL:**

S45c AISI 1045 Steel

FINISH:

Black Oxide



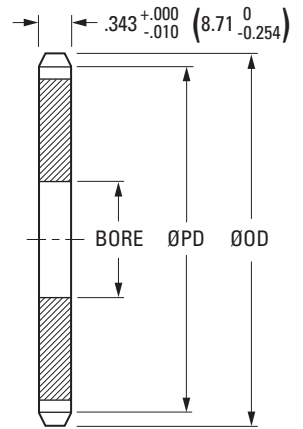
Dimensions in () are mm.

Catalog Number	No. of Teeth	Bore $\begin{matrix} +.001 & (+0.025) \\ -.000 & 0 \end{matrix}$	Pitch Diameter ØPD	ØOD $\begin{matrix} +.000 & 0 \\ -.005 & -0.127 \end{matrix}$	Hub Diameter ØE	Overall Length L	F	Set Screw
QSPK41-BC04020	40	.625 (15.88)	6.373 (161.87)	6.653 (169)	3.25 (82.6)	1.063 (27)	.400 (10.2)	1/4-20
QSPK41-BC04224	42	.750 (19.05)	6.691 (169.94)	6.972 (177.1)	3.50 (88.9)			
QSPK41-BC04524	45	.750 (19.05)	7.168 (182.06)	7.450 (189.2)	3.50 (88.9)			
QSPK41-BC04824	48	.750 (19.05)	7.645 (194.18)	7.929 (201.4)	3.50 (88.9)	1.063 (27)	.400 (10.2)	1/4-20
QSPK41-BC05424	54		8.599 (218.42)	8.885 (225.7)				
QSPK41-BC06024	60		9.554 (242.66)	9.841 (250)				
QSPK41-BC07024	70	.750 (19.05)	11.145 (283.07)	11.433 (290.4)	4.00 (101.6)	1.188 (30.2)	.500 (12.7)	1/4-20
QSPK41-BC07224	72		11.463 (291.15)	11.752 (298.5)				
QSPK41-BC08024	80		12.736 (323.49)	13.026 (330.9)				
QSPK41-BC08424	84	.750 (19.05)	13.372 (339.65)	13.663 (347)	4.00 (101.6)	1.188 (30.2)	.500 (12.7)	1/4-20
QSPK41-BC09632	96	1.000 (25.4)	15.282 (388.15)	15.573 (395.6)				
QSPK41-BC10032	100	1.000 (25.4)	15.918 (404.32)	16.210 (411.7)				
QSPK41-BC11232	112	1.000 (25.4)	17.828 (452.82)	18.121 (460.3)				

 SPROCKETS
 ISO 04B
 ISO 05B
 ISO 06B
 ISO 08B
 ISO 10B
 No. 25
 No. 35
 No. 40
 No. 41
 No. 50
 Roller Chains

A Type Sprockets

ANSI B29.1

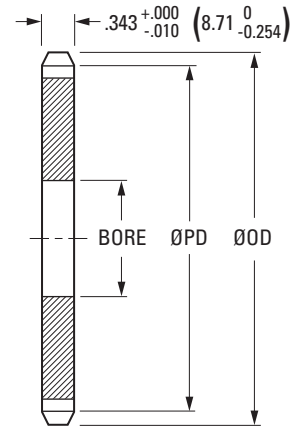


MATERIAL:
S45c AISI 1045 Steel
FINISH:
Black Oxide

Dimensions in () are mm.

Catalog Number	No. of Teeth	Bore	Pitch Diameter ØPD	ØOD
		$+.001 \begin{pmatrix} +0.025 \\ -0.000 \end{pmatrix}$		$+.000 \begin{pmatrix} 0 \\ -0.005 \end{pmatrix}$
QSPK50-AC01220	12	.625 (15.88)	2.415 (61.34)	2.708 (68.8)
QSPK50-AC01320	13		2.612 (68.33)	2.911 (73.9)
QSPK50-AC01420	14	.625 (15.88)	2.809 (71.34)	3.113 (79.1)
QSPK50-AC01520	15		3.006 (76.35)	3.315 (84.2)
QSPK50-AC01620	16	.625 (15.88)	3.204 (81.37)	3.517 (89.3)
QSPK50-AC01720	17		3.401 (86.39)	3.718 (94.4)
QSPK50-AC01820	18	.625 (15.88)	3.599 (91.42)	3.920 (99.6)
QSPK50-AC01920	19		3.797 (96.45)	4.120 (104.7)
QSPK50-AC02020	20	.750 (19.05)	3.995 (101.48)	4.321 (109.8)
QSPK50-AC02124	21		4.193 (106.51)	4.522 (114.8)
QSPK50-AC02224	22	.750 (19.05)	4.392 (111.56)	4.722 (119.9)
QSPK50-AC02324	23		4.590 (116.59)	4.922 (125)
QSPK50-AC02424	24	.750 (19.05)	4.788 (121.62)	5.122 (130.1)
QSPK50-AC02524	25		4.987 (126.58)	5.322 (135.2)
QSPK50-AC02624	26	.750 (19.05)	5.185 (131.7)	5.522 (140.3)
QSPK50-AC02724	27		5.384 (136.74)	5.722 (145.3)
QSPK50-AC02824	28	.750 (19.05)	5.582 (141.79)	5.922 (150.4)
QSPK50-AC02924	29		5.781 (146.83)	6.122 (155.5)
QSPK50-AC03024	30	.750 (19.05)	5.979 (151.87)	6.321 (160.6)
QSPK50-AC03124	31		6.178 (156.92)	6.521 (165.6)
QSPK50-AC03224	32	.750 (19.05)	6.376 (161.95)	6.721 (170.7)
QSPK50-AC03324	33		6.575 (167.01)	6.920 (175.6)
QSPK50-AC03424	34	.750 (19.05)	6.774 (172.05)	7.120 (180.8)
QSPK50-AC03524	35		6.972 (177.1)	7.319 (185.9)
QSPK50-AC03624	36	.750 (19.05)	7.171 (182.15)	7.519 (191)
QSPK50-AC03724	37		7.370 (187.19)	7.718 (196)
QSPK50-AC03824	38	.750 (19.05)	7.568 (192.24)	7.918 (201.1)
QSPK50-AC03924	39		7.767 (197.29)	8.117 (206.2)
QSPK50-AC04024	40		7.968 (202.33)	8.316 (211.2)

Larger numbers of teeth on the next page

**MATERIAL:**

S45c AISI 1045 Steel

FINISH:

Black Oxide

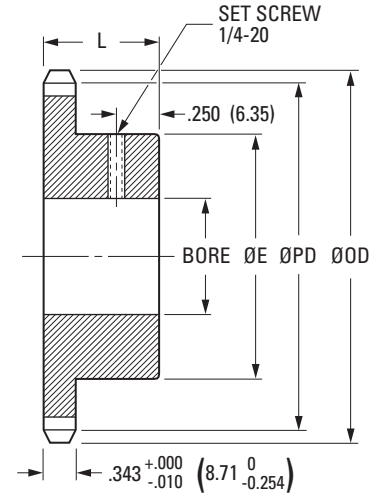
Dimensions in () are mm.

Catalog Number	No. of Teeth	Bore $\begin{matrix} +.001 & (+0.025) \\ -.000 & 0 \end{matrix}$	Pitch Diameter ØPD	ØOD $\begin{matrix} +.000 & 0 \\ -.005 & -0.127 \end{matrix}$
QSPK50-AC04124	41	.750 (19.05)	8.165 (207.38)	8.516 (216.3)
QSPK50-AC04224	42		8.363 (212.43)	8.715 (221.4)
QSPK50-AC04324	43	.750 (19.05)	8.562 (217.48)	8.914 (226.4)
QSPK50-AC04424	44		8.761 (222.63)	9.114 (231.5)
QSPK50-AC04524	45	.750 (19.05)	8.960 (227.58)	9.313 (236.5)
QSPK50-AC04632	46	1.000 (25.4)	9.159 (232.63)	9.512 (241.6)
QSPK50-AC04732	47		9.357 (237.58)	9.711 (246.7)
QSPK50-AC04832	48	1.000 (25.4)	9.556 (242.73)	9.911 (251.7)
QSPK50-AC04932	49		9.755 (247.78)	10.110 (256.8)
QSPK50-AC05032	50	1.000 (25.4)	9.954 (252.82)	10.309 (261.9)
QSPK50-AC05132	51		10.153 (257.87)	10.508 (266.9)
QSPK50-AC05232	52	1.000 (25.4)	10.351 (262.92)	10.707 (272)
QSPK50-AC05332	53		10.550 (267.97)	10.907 (277)
QSPK50-AC05432	54	1.000 (25.4)	10.749 (273.03)	11.106 (282.1)
QSPK50-AC05532	55		10.948 (278.08)	11.305 (287.1)
QSPK50-AC05632	56	1.000 (25.4)	11.147 (283.13)	11.504 (292.2)
QSPK50-AC05732	57		11.346 (288.18)	11.703 (297.3)
QSPK50-AC05832	58	1.000 (25.4)	11.544 (293.23)	11.902 (302.3)
QSPK50-AC05932	59		11.743 (298.28)	12.102 (307.4)
QSPK50-AC06032	60	1.000 (25.4)	11.942 (303.33)	12.301 (312.4)
QSPK50-AC07032	70		13.931 (353.84)	14.292 (363)
QSPK50-AC07232	72	1.000 (25.4)	14.328 (363.94)	14.590 (373.1)
QSPK50-AC07632	76		15.124 (384.15)	15.486 (393.3)
QSPK50-AC08032	80	1.000 (25.4)	15.920 (404.36)	16.282 (413.6)
QSPK50-AC08432	84		16.715 (424.57)	17.078 (433.8)
QSPK50-AC09532	95	1.000 (25.4)	18.903 (480.14)	19.288 (489.9)
QSPK50-AC09632	96		19.102 (485.19)	19.467 (494.5)
QSPK50-AC10032	100	1.000 (25.4)	19.898 (505.4)	20.263 (514.7)
QSPK50-AC11232	112		22.285 (566.03)	22.651 (575.3)

SPROCKETS
 ISO 04B
 ISO 05B
 ISO 06B
 ISO 08B
 ISO 10B
 No. 25
 No. 35
 No. 40
 No. 41
 No. 50
 Roller Chains

B Type Sprockets

ANSI B29.1



Dimensions in () are mm.

Catalog Number	No. of Teeth	Bore $+0.001 \begin{matrix} +0.025 \\ -0.000 \end{matrix} \begin{matrix} 0 \\ 0 \end{matrix}$	Pitch Diameter ØPD	ØOD $+0.000 \begin{matrix} 0 \\ -0.005 \end{matrix} \begin{matrix} 0 \\ -0.127 \end{matrix}$	Hub Diameter ØE	Overall Length L
QSPK50-BC00816	8	.500 (12.7)	1.633 (41.48)	1.884 (47.9)	1.19 (30.2)	.75 (19.1)
QSPK50-BC00920	9	.625 (15.88)	1.827 (48.42)	2.092 (53.1)	1.38 (34.9)	.75 (19.1)
QSPK50-BC01020	10	.625 (15.88)	2.023 (51.37)	2.299 (58.4)	1.56 (39.7)	.75 (19.1)
QSPK50-BC01120	11	.625 (15.88)	2.218 (56.35)	2.504 (63.6)	1.75 (44.5)	.75 (19.1)
QSPK50-BC01220	12	.625 (15.88)	2.415 (61.34)	2.708 (68.8)	1.98 (50.4)	.75 (19.1)
QSPK50-BC01320	13	.625 (15.88)	2.612 (66.33)	2.911 (73.9)	2.00 (50.8)	.75 (19.1)
QSPK50-BC01420	14	.625 (15.88)	2.809 (71.34)	3.113 (79.1)	2.13 (54)	.75 (19.1)
QSPK50-BC01520	15	.625 (15.88)	3.006 (76.35)	3.315 (84.2)	2.38 (60.3)	.75 (19.1)
QSPK50-BC01620	16	.625 (15.88)	3.204 (81.37)	3.517 (89.3)	2.56 (65.1)	.75 (19.1)
QSPK50-BC01720	17	.625 (15.88)	3.401 (86.39)	3.718 (94.4)	2.69 (68.3)	.75 (19.1)
QSPK50-BC01820	18	.625 (15.88)	3.599 (91.42)	3.920 (99.6)	2.88 (73)	.75 (19.1)
QSPK50-BC01920	19	.625 (15.88)	3.797 (96.45)	4.120 (104.7)	3.00 (76.2)	.75 (19.1)
QSPK50-BC02024	20	.750 (19.05)	3.995 (101.48)	4.321 (109.8)		.75 (19.1)
QSPK50-BC02124	21	.750 (19.05)	4.193 (106.51)	4.522 (114.8)		.84 (21.3)
QSPK50-BC02224	22	.750 (19.05)	4.392 (111.55)	4.722 (119.9)		.84 (21.3)
QSPK50-BC02324	23	.750 (19.05)	4.590 (116.59)	4.922 (125)		.84 (21.3)
QSPK50-BC02424	24	.750 (19.05)	4.788 (121.62)	5.122 (130.1)		.84 (21.3)
QSPK50-BC02524	25	.750 (19.05)	4.987 (126.66)	5.322 (135.2)		.84 (21.3)
QSPK50-BC02624	26	.750 (19.05)	5.185 (131.7)	5.522 (140.3)		.84 (21.3)
QSPK50-BC02724	27	.750 (19.05)	5.384 (138.74)	5.722 (145.3)		.84 (21.3)
QSPK50-BC02824	28	.750 (19.05)	5.582 (141.79)	5.922 (150.4)		.84 (21.3)
QSPK50-BC02924	29	.750 (19.05)	5.781 (146.83)	6.122 (155.5)		.84 (21.3)
QSPK50-BC03024	30	.750 (19.05)	5.979 (151.87)	6.321 (160.6)		.84 (21.3)
QSPK50-BC03124	31	.750 (19.05)	6.178 (156.92)	6.521 (165.6)		.84 (21.3)
QSPK50-BC03224	32	.750 (19.05)	6.376 (161.96)	6.721 (170.7)		.84 (21.3)

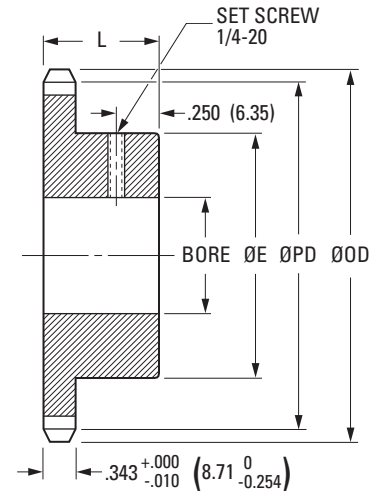
Larger numbers of teeth on the next page

**MATERIAL:**

S45c AISI 1045 Steel

FINISH:

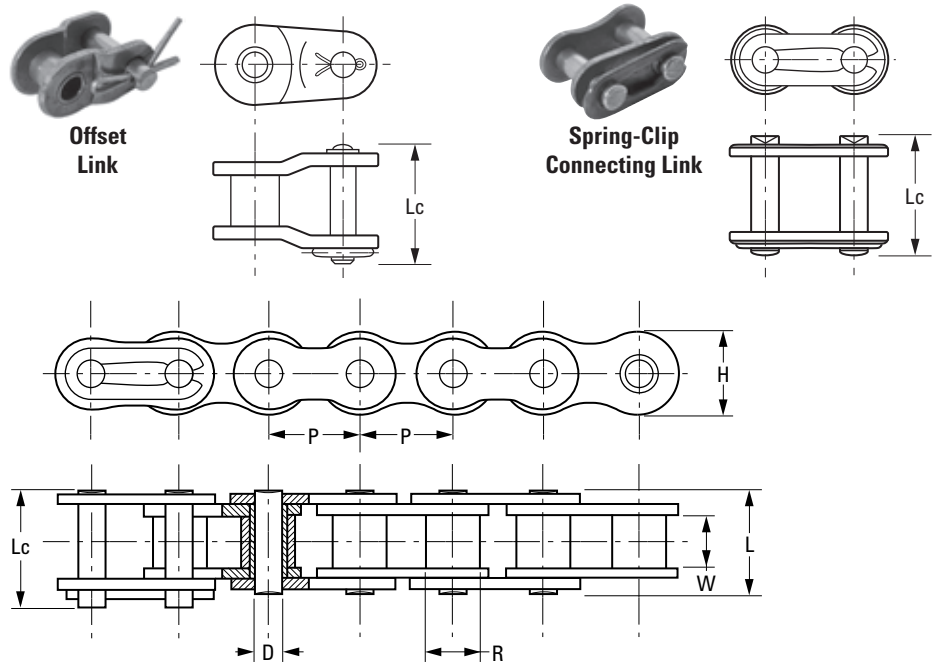
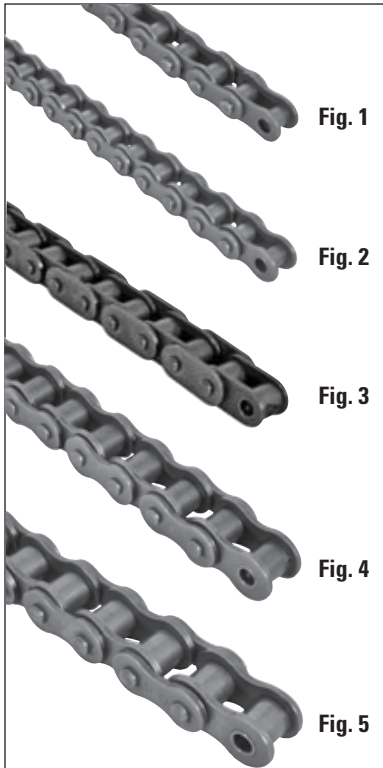
Black Oxide



Dimensions in () are mm.

Catalog Number	No. of Teeth	Bore $\begin{matrix} +.001 & (+0.025) \\ -.000 & 0 \end{matrix}$	Pitch Diameter ØPD	ØOD $\begin{matrix} +.000 & 0 \\ -.005 & (-0.127) \end{matrix}$	Hub Diameter ØE	Overall Length L
QSPK50-BC03324	33	.750 (19.05)	6.575 (167.01)	6.920 (175.8)	3.25 (82.6)	.84 (21.3)
QSPK50-BC03424	34		6.774 (172.05)	7.120 (180.8)		
QSPK50-BC03524	35	.750 (19.05)	6.972 (177.1)	7.319 (185.9)	3.50 (88.9)	.84 (21.3)
QSPK50-BC03624	36		7.171 (182.15)	7.519 (191)		
QSPK50-BC03724	37	.750 (19.05)	7.370 (187.19)	7.718 (196)	3.50 (88.9)	.84 (21.3)
QSPK50-BC03824	38		7.568 (192.24)	7.918 (201.1)		
QSPK50-BC03924	39	.750 (19.05)	7.767 (197.29)	8.117 (206.2)	3.50 (88.9)	.84 (21.3)
QSPK50-BC04024	40		7.966 (202.33)	8.316 (211.2)		
QSPK50-BC04224	42	.750 (19.05)	8.363 (212.43)	8.715 (221.4)	3.50 (88.9)	.84 (21.3)
QSPK50-BC04424	44		8.761 (222.53)	9.114 (231.5)	3.75 (95.3)	
QSPK50-BC04524	45	.750 (19.05)	8.960 (227.58)	9.313 (236.5)	3.75 (95.3)	.84 (21.3)
QSPK50-BC04824	48		9.556 (242.73)	9.911 (251.7)		
QSPK50-BC05024	50	.750 (19.05)	9.954 (252.82)	10.309 (261.9)	3.75 (95.3)	.84 (21.3)
QSPK50-BC05224	52		10.351 (262.92)	10.707 (272)		
QSPK50-BC05424	54	.750 (19.05)	10.749 (273.03)	11.106 (282.1)	3.75 (95.3)	.84 (21.3)
QSPK50-BC06024	60		11.942 (303.33)	12.301 (312.4)		
QSPK50-BC07024	70	.750 (19.05)	13.931 (353.84)	14.292 (363)	3.75 (95.3)	.84 (21.3)
QSPK50-BC07224	72		14.328 (363.94)	14.690 (373.1)		
QSPK50-BC07624	76	.750 (19.05)	15.124 (384.15)	15.486 (393.3)	3.75 (95.3)	.84 (21.3)
QSPK50-BC08024	80		15.920 (404.36)	16.282 (413.6)	4.63 (117.6)	
QSPK50-BC08424	84	.750 (19.05)	16.715 (424.57)	17.078 (433.8)	4.63 (117.6)	.84 (21.3)
QSPK50-BC09024	90		17.909 (454.88)	18.273 (464.1)		
QSPK50-BC09524	95	.750 (19.05)	18.903 (408.14)	19.268 (489.4)	4.63 (117.6)	.84 (21.3)
QSPK50-BC09624	96		19.102 (485.19)	19.467 (494.5)		
QSPK50-BC10024	100	.750 (19.05)	19.898 (505.4)	20.263 (514.7)	4.63 (117.6)	.84 (21.3)
QSPK50-BC11224	112		22.285 (566.03)	22.651 (575.3)		

 SPROCKETS
 ISO 04B
 ISO 05B
 ISO 06B
 ISO 08B
 ISO 10B
 No. 25
 No. 35
 No. 40
 No. 41
 No. 50
 Roller Chains



Dimensions in () are inch.

Spring-Clip Conn. Link	Offset Link	For use with Fig. No.	Lc
QCM-04B-1SCCL	QCM-04B-10L	1	7.8 (.307)
QCM-05B-1SCCL	QCM-05B-10L	2	8.9 (.350)
QCM-06B-1SCCL	QCM-06B-10L	3	14.2 (.559)
QCM-08B-1SCCL	QCM-08B-10L	4	18 (.709)
QCM-10B-1SCCL	QCM-10B-10L	5	21 (.827)

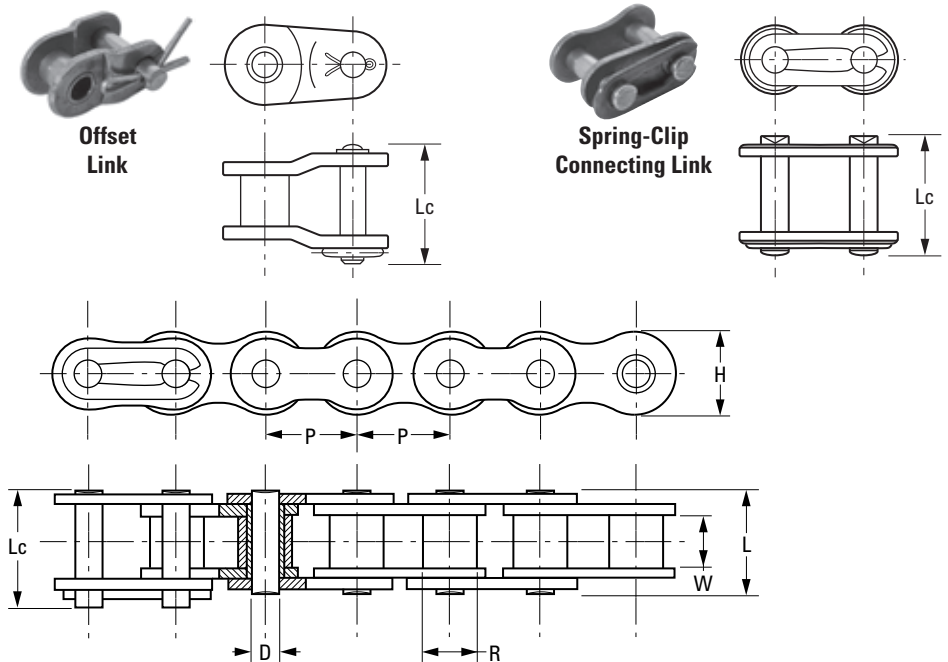
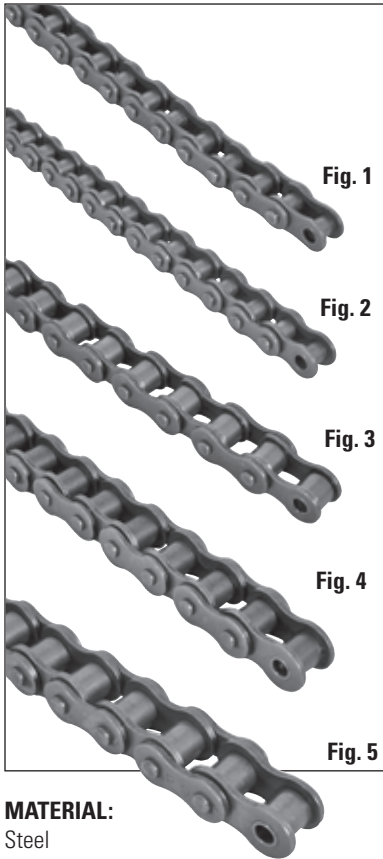
MATERIAL:

Steel

Catalog Number	Fig. No.	Pitch P	Max. Roller Diameter R	Min. Width W	Max. Pin Diameter D	Max. Pin Length L	Max. Inner Plate Height H
QCM-04B-1	1	6 (.236)	4 (.157)	2.8 (.110)	1.85 (.073)	6.8 (.268)	5 (.197)
QCM-05B-1	2	8 (.315)	5 (.197)	3 (.118)	2.31 (.091)	8 (.315)	7.11 (.280)
*QCM-06B-1	3	9.525 (.375)	6.35 (.250)	5.72 (.225)	3.28 (.129)	13.2 (.520)	8.2 (.323)
QCM-08B-1	4	12.7 (.500)	8.51 (.335)	7.75 (.305)	4.45 (.175)	16.7 (.657)	11.8 (.465)
QCM-10B-1	5	15.875 (.625)	10.16 (.400)	9.65 (.380)	5.08 (.200)	19.6 (.772)	14.7 (.579)

Catalog Number	Fig. No.	Max. Working Load kN (lb.)	Average Tensile Strength kN (lb.)	Ultimate Tensile Strength kN (lb.)	Weight per Length kg/m (lb./ft.)
QCM-04B-1	1	0.25 (56.2)	3.2 (719)	3 (674)	0.11 (.074)
QCM-05B-1	2	0.45 (101.2)	5.8 (1304)	5 (1124)	0.2 (.134)
*QCM-06B-1	3	0.82 (184.3)	10 (2248)	9 (2023)	0.41 (.276)
QCM-08B-1	4	1.2 (269.8)	19.3 (4339)	18 (4047)	0.69 (.464)
QCM-10B-1	5	3.33 (748.6)	26.5 (5957)	22.4 (5036)	0.93 (.625)

*Straight side plates (See Fig.3)



Dimensions in () are mm.

Spring-Clip Conn. Link	Offset Link	For use with Fig. No.	Lc
QCE-25-1SCCL	QCE-25-10L	1	.333 (8.45)
QCE-35-1SCCL	QCE-35-10L	2	.516 (13.1)
QCE-41-1SCCL	QCE-41-10L	3	.606 (15.4)
QCE-40-1SCCL	QCE-40-10L	4	.699 (17.75)
QCE-50-1SCCL	QCE-50-10L	5	.874 (22.2)

MATERIAL:
Steel

Catalog Number	Fig. No.	Pitch P	Max. Roller Diameter R	Min. Width W	Max. Pin Diameter D	Max. Pin Length L	Max. Inner Plate Height H
QCE-25-1	1	.250 (6.35)	.130 (3.3)*	.125 (3.18)	.091 (2.31)	.307 (7.8)	.232 (5.9)
QCE-35-1	2	.375 (9.53)	.200 (5.08)*	.188 (4.77)	.141 (3.58)	.478 (12.15)	.352 (8.95)
QCE-41-1	3	.500 (12.7)	.306 (7.77)	.246 (6.25)	.141 (3.58)	.541 (13.75)	.390 (9.9)
QCE-40-1	4	.500 (12.7)	.313 (7.95)	.309 (7.85)	.156 (3.96)	.654 (16.6)	.469 (11.9)
QCE-50-1	5	.625 (15.88)	.400 (10.16)	.370 (9.4)	.200 (5.08)	.823 (20.9)	.594 (15.09)

Catalog Number	Fig. No.	Max. Working Load lb. (kN)	Average Tensile Strength lb. (kN)	Ultimate Tensile Strength lb. (kN)	Weight per Length lb./ft. (kg/m)
QCE-25-1	1	141.6 (0.63)	989.2 (4.4)	786.8 (3.5)	.10 (0.15)
QCE-35-1	2	317.0 (1.41)	2203.1 (9.8)	1776.0 (7.9)	.22 (0.33)
QCE-41-1	3	301.2 (1.34)	2652.7 (11.8)	1499.5 (6.67)	.28 (0.41)
QCE-40-1	4	557.5 (2.48)	3821.8 (17)	3169.8 (14.1)	.42 (0.62)
QCE-50-1	5	820.6 (3.65)	5935.0 (26.4)	4990.8 (22.2)	.69 (1.02)

It is customary to show 41-1 above 40-1 even though the part numbers will not be in sequence.

*Bushing Diameter, as these chains have no rollers.

SPROCKETS
 ISO 04B
 ISO 05B
 ISO 06B
 ISO 08B
 ISO 10B
 No. 25
 No. 35
 No. 40
 No. 41
 No. 50
 Roller Chains

Chain Length Calculations

Chain Length may be calculated from the following formulas:

$$\text{Formula No. 1 } C_1 = \frac{L}{2} - \frac{N+n}{4}$$

$$\text{Formula No. 2 } C_2 = \frac{L}{2} - \frac{N+n}{4} - \frac{(N-n)^2}{8\pi^2 C_1}$$

$$\text{Formula No. 3 } L = 2C + \frac{N+n}{2} + \frac{(N-n)^2}{4\pi^2 C}$$

Where: C = C₁ or C₂, depending on the case.

C₁ = Center distance in number of pitches (links)
– low ratios and long centers.

C₂ = Center distance in number of pitches (links)
– high ratios and short centers.

L = Chain length in number of pitches (links).

N = Number of teeth in large sprocket.

n = Number of teeth in small sprocket.

The above formula can be simplified by using the tabulated value below, where:

$$F = \frac{(N-n)^2}{4\pi^2}$$

$$\text{Formula No. 2 } C_2 = \frac{L}{2} - \frac{N+n}{4} - \frac{F}{2C_1}$$

$$\text{Formula No. 3 } L = 2C + \frac{N+n}{2} + \frac{F}{C}$$

N - n	F	N - n	F	N - n	F	N - n	F
1	0.03	26	17.12	51	65.88	76	146.31
2	0.10	27	18.47	52	68.49	77	150.18
3	0.23	28	19.86	53	71.15	78	154.11
4	0.41	29	21.30	54	73.86	79	158.09
5	0.63	30	22.80	55	76.62	80	162.11
6	0.91	31	24.34	56	79.44	81	166.19
7	1.24	32	25.94	57	82.30	82	170.32
8	1.62	33	27.58	58	85.21	83	174.50
9	2.05	34	29.28	59	88.17	84	178.73
10	2.53	35	31.03	60	91.19	85	183.01
11	3.06	36	32.83	61	94.25	86	187.34
12	3.65	37	34.68	62	97.37	87	191.73
13	4.28	38	36.58	63	100.54	88	196.16
14	4.96	39	38.53	64	103.75	89	200.64
15	5.70	40	40.53	65	107.02	90	205.18
16	6.48	41	42.58	66	110.34	91	209.76
17	7.32	42	44.68	67	113.71	92	214.40
18	8.21	43	46.84	68	117.13	93	219.08
19	9.14	44	49.04	69	120.60	94	223.82
20	10.13	45	51.29	70	124.12	95	228.61
21	11.17	46	53.60	71	127.69	96	233.44
22	12.26	47	55.95	72	131.31	97	238.33
23	13.40	48	58.36	73	134.99	98	243.27
24	14.59	49	60.82	74	138.71	99	248.26
25	15.83	50	63.33	75	142.48	100	253.30

QUALITY (QTC) TRANSMISSION COMPONENTS

Company Profile

QTC, a division of Designatronics, Inc. is a supplier of medium and coarse pitch power transmission components designed for use in industrial automation applications. QTC is the exclusive North American distributor of KHK gears.

- Metric Spur Gears
- Metric Gear Racks
- Metric Bevel Gears
- Metric Worm Gears
- Metric Ratchets & Pawls

Details of all of these products, including downloadable 3D models and our eStore, can be found on our web site at www.qtcgears.com



MESH UP
www.qtcgears.com

Exclusive North American Distributor of
KHK BEARS
www.khkgears.co.jp/

- Spur Gears
- Gear Racks
- Miter Gears
- Bevel Gears
- Worm Gears

From stock for all your metric gearing needs.

Quality Transmission Components

Phone: 516.437.6700
Fax: 516.328.3343

Find our products with
GLOBALSPEC®