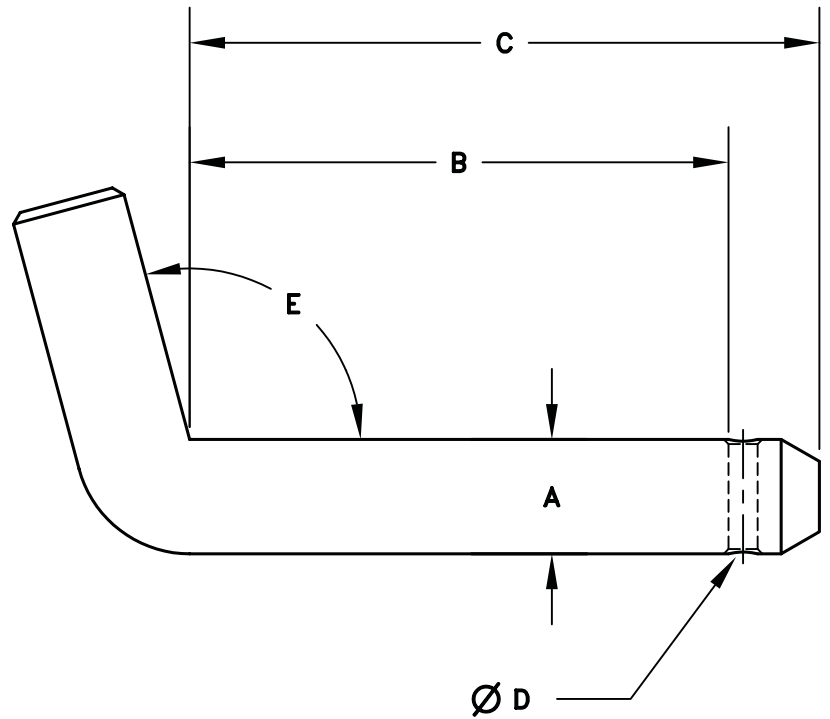


# BENT PULL PIN



CARBON STEEL WITH ZINC FINISH

ITEM	A	B	C	D	E
1225B	1/2	2 1/2	3 1/8	5/32	105°
123B	1/2	3	3 5/8	5/32	105°
124B	1/2	4	4 5/8	5/32	105°
1245B	1/2	4 1/2	5 1/8	5/32	105°
125B	1/2	5	3 5/8	5/32	105°
583B	5/8	3	3 5/8	0.191	105°
584B	5/8	4	4 5/8	0.191	105°
3435B	3/4	3 1/2	4 1/8	0.191	105°
3445B	3/4	4 1/2	5 1/8	0.191	105°

