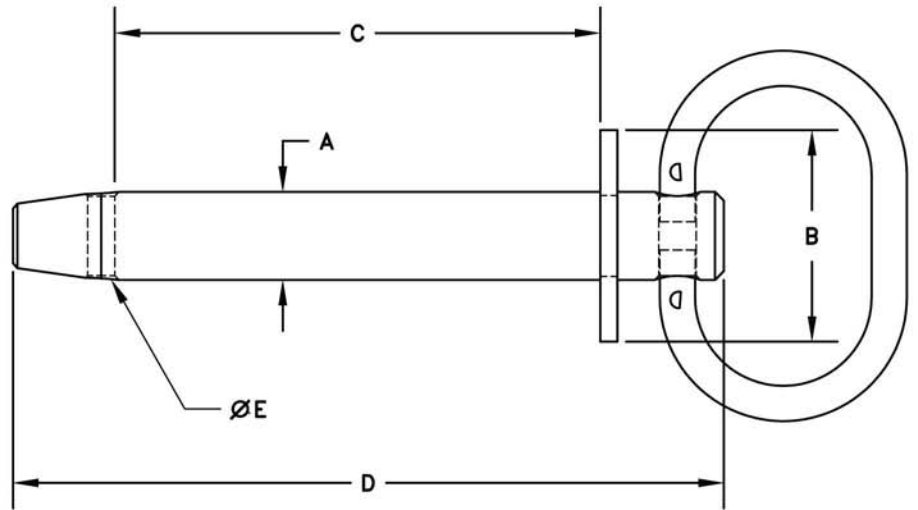


PIN-LOCK HITCH PIN



CARBON STEEL WITH ZINC FINISH

ITEM	A	B	C	D	E
38H	3/8	1	3	4 ³ / ₁₆	7/64
12H	1/2	1 ¹ / ₄	3 ¹ / ₂	5	5/32
58H	5/8	1 ¹ / ₂	4 ¹ / ₂	6 ¹ / ₈	0.191
34H	3/4	1 ¹ / ₂	4 ¹ / ₂	6 ¹ / ₈	0.191
78H	7/8	1 ³ / ₄	4 ¹ / ₂	6 ⁵ / ₈	0.191
100H	1	1 ³ / ₄	4 ¹ / ₂	6 ⁵ / ₈	0.191
586H	5/8	1 ¹ / ₂	6	7 ⁵ / ₈	0.191
346H	3/4	1 ¹ / ₂	6	7 ⁵ / ₈	0.191
786H	7/8	1 ³ / ₄	6	8 ¹ / ₈	0.191
1006H	1	1 ³ / ₄	6	8 ¹ / ₈	0.191
1187H	1 ¹ / ₈	2	7	9 ¹ / ₈	0.191
1250H	1 ¹ / ₄	2	7	9 ¹ / ₈	0.191

