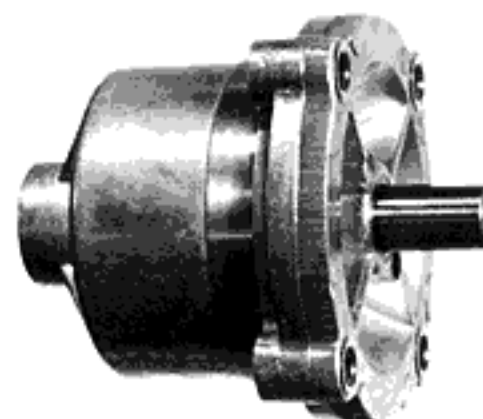


Model X – CRD CR Dashpot

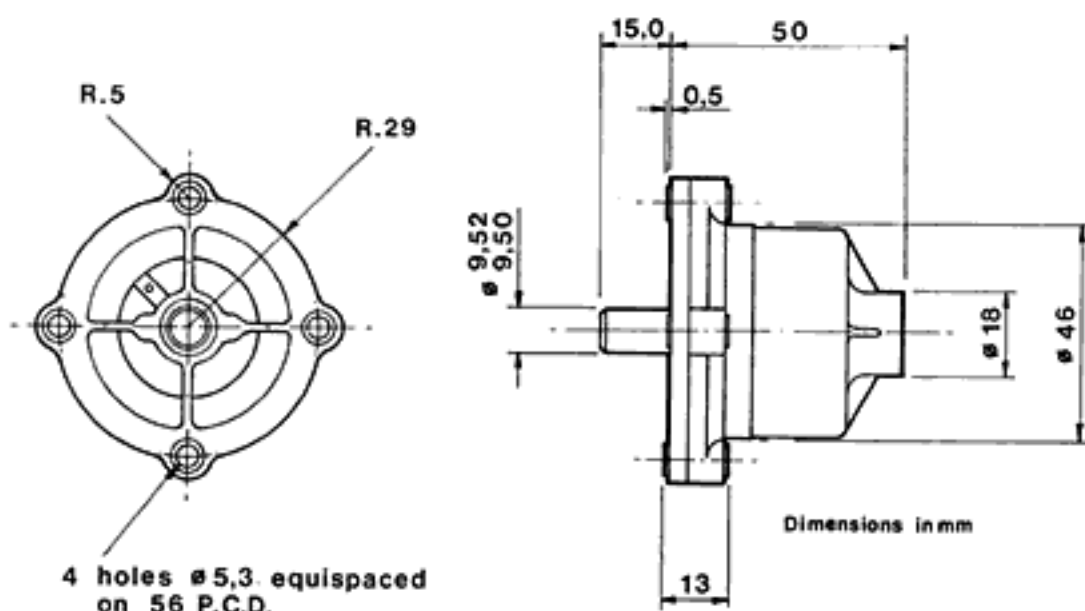


SPECIFICATION

Rate	Fixed - see curves below ($\pm 10\%$)
Ambient temperature range	0°C to 60°C
Frictional torque	0.3 lbf.ins / 0.034 Nm typical
Shaft material	Mild steel 080A15 (case hardened)
Body material	Zinc alloy Mazak 3
Weight	0.78 lbs / 355 g
Bearing	Single overhung anti-friction bush



British and Foreign Patents



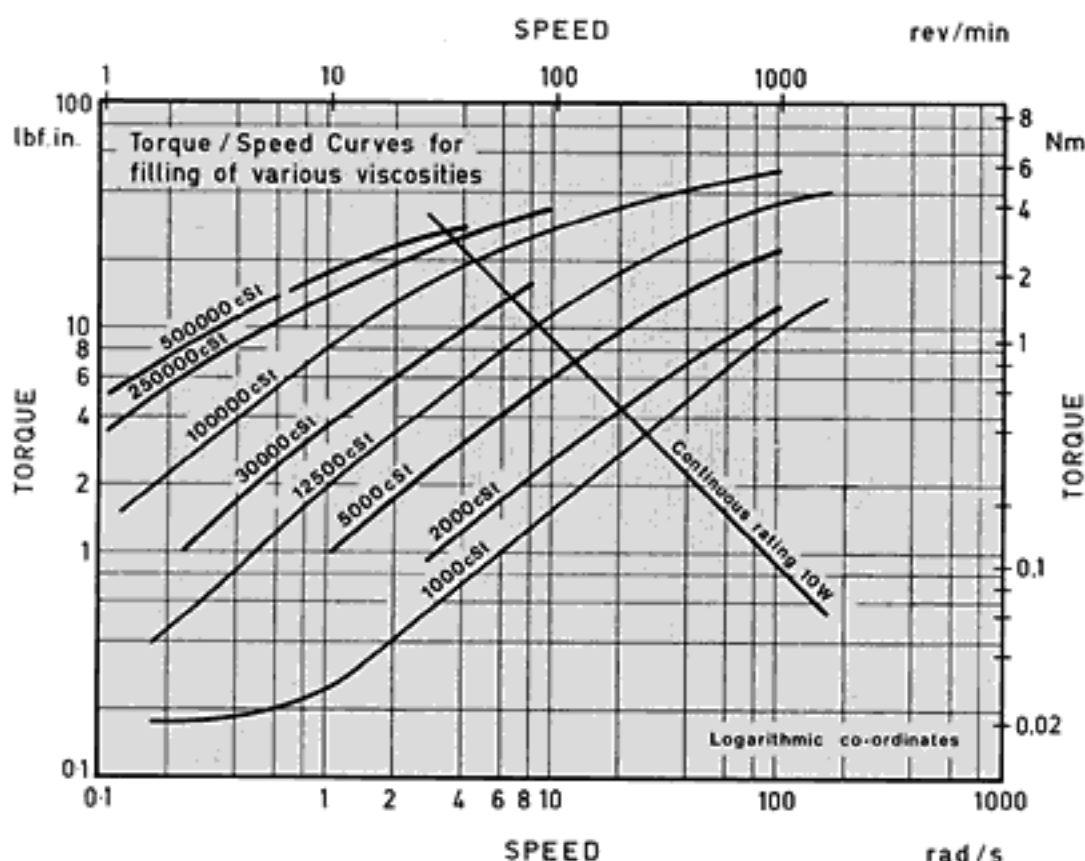
APPLICATIONS

The X – CRD continuous rotation dashpot is value engineered to suit volume applications where unit cost is of paramount importance.

Viscous damping is produced by shear of a film of silicone fluid, using a drum type rotor. Static friction is higher than for other dashpots in the range but is not significant for most applications. The dashpot is designed to react pure torsion and therefore side or axial loads should be avoided.

Dashpots can be supplied with various fixed rates which depend on the viscosity of the fluid filling. Viscosity should be specified when ordering to give the required characteristics. Performance curves for different viscosities are shown. Provision is made for temperature expansion of the fluid and no topping up is required during the life of the dashpot. The shaft can be supplied unhardened if required.

Typical applications include damping moving parts in light machinery, e.g. copying machines, control of coil dereeling, control of descent.



VISCOSITIES AVAILABLE

1,000; 2,000; 5,000; 12,500; 30,000; 100,000; 250,000; 500,000 cSt.

ORDERING CODES

X – CRD – (Filling Viscosity)

Example: X – CRD – 12,500 has a 12,500 cSt filling.