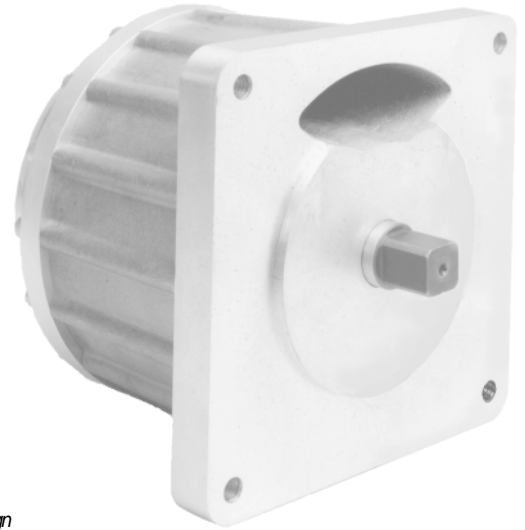




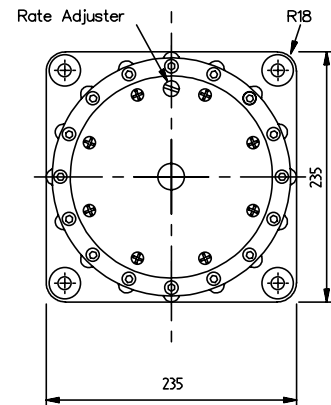
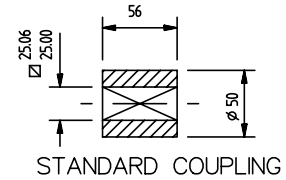
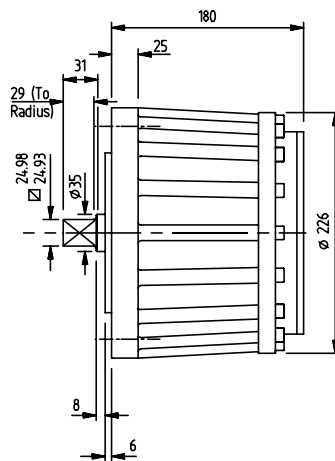
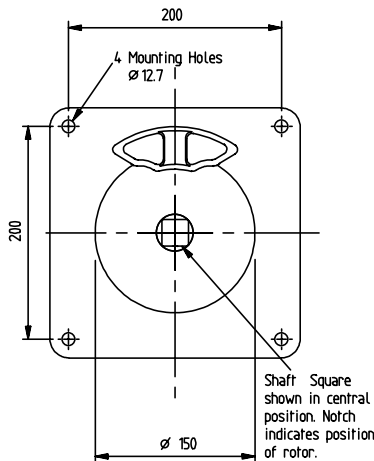
Model LD Dashpot

SPECIFICATION

Rate	Adjustable Max(LB4): 4000 Nm/rad/s (35400 lbf.ins/rad/s)
Angle of travel	240° ± 5° External end stops must be provided
Max. safe torque	6200 lbf.ins / 700 Nm. Continuous power dissipation not to exceed 260W at 20 °C
Max. shaft end load	224 lbf / 1000 N pushing on shaft 18 lbf / 80 N pulling on shaft
Max. shaft side load	450 lbf / 2000 N
Ambient temperature range	0°C to 60°C
Frictional torque	27 lbf.ins / 3 Nm typical
Shaft material	Stainless steel 441S49
Body material	Aluminium alloy LM25
Weight:	36 lbs / 16.4 kg



*British and foreign
patents applied for*



RATES

An adjuster permits any damping rate to be obtained within one of the following ranges. This range must be specified when ordering the dashpot.

- LD1:** 0443 to 4430 lbf.ins/rad/s / 50 to 500 Nm/rad/s
- LD2:** 885 to 8850 lbf.ins/rad/s / 100 to 1000 Nm/rad/s
- LD3:** 1770 to 17700 lbf.ins/rad/s / 200 to 2000 Nm/rad/s
- LD4:** 3540 to 35400 lbf.ins/rad/s / 400 to 4000 Nm/rad/s

With adjuster set to maximum the rate may exceed stated maximum and with adjuster set to minimum the rate may be less than stated minimum.

OPTIONS

The following features may be specified for any model:-

Differential Rate (FC or FAC)

Gives a large resistance in one direction only and less than 1/10 resistance in the other. Specify free clockwise or free anticlockwise when viewed from shaft end.

Double Damping (DD)

Gives equal resistance in either direction.

Couplings

Steel couplings are available.

ORDERING CODES

- LD1, 2, 3 or 4 – DD
- LD1, 2, 3 or 4 – FC or FAC