



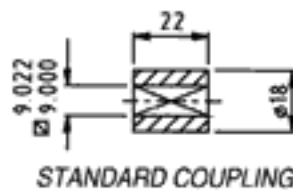
# Model LA Dashpot

## SPECIFICATION

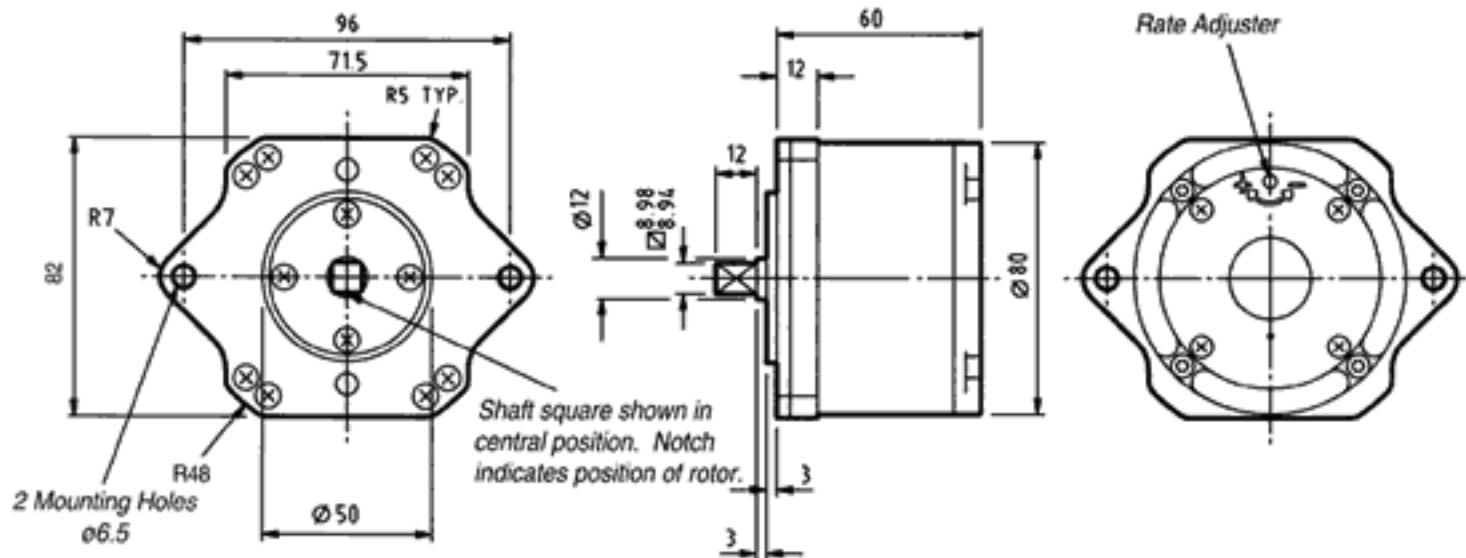
<b>Rate</b>	Adjustable Max (LA4): 300 Nm/rad/s (2700 lbf.ins/rad/s)
<b>Angle of travel</b>	215° ± 5° External end stops must be provided
<b>Max. safe torque</b>	350 lbf.ins / 40 Nm Continuous power dissipation not to exceed 10W at 20°C ambient
<b>Max. shaft end load</b>	2 lbf / 10 N
<b>Max. shaft side load</b>	100 lbf / 450 N
<b>Ambient temperature range</b>	0°C to 60°C
<b>Frictional torque</b>	2 lbf.ins / 0.2 Nm typical
<b>Shaft material</b>	Stainless steel 441S49
<b>Body material</b>	Zinc alloy Ilzro 16
<b>Weight:</b>	3.6 lbs / 1.61 kg



British and Foreign Patents Applied For



Dimensions in mm



## RATES

An adjuster permits any damping rate to be obtained within one of the following ranges. This range must be specified when ordering the dashpot.

- LA1: 22 to 220 lbf.ins/rad/s / 2.5 to 25 Nm/rad/s
- LA2: 53 to 530 lbf.ins/rad/s / 6 to 60 Nm/rad/s
- LA3: 106 to 1060 lbf.ins/rad/s / 12 to 120 Nm/rad/s
- LA4: 266 to 2660 lbf.ins/rad/s / 30 to 300 Nm/rad/s

With adjuster set to maximum the rate may exceed stated maximum and with adjuster set to minimum the rate may be less than stated minimum.

## OPTIONS

The following features may be specified for any model:-

### Differential Rate (FC or FAC)

Gives a large resistance in one direction only and less than 1/10 resistance in the other. Specify free clockwise or free anticlockwise when viewed from shaft end.

### Double Damping (DD)

Gives equal resistance in either direction.

### Couplings

Steel couplings are available.

## ORDERING CODES

LA1, 2, 3 or 4 – DD

LA1, 2, 3 or 4 – FC or FAC