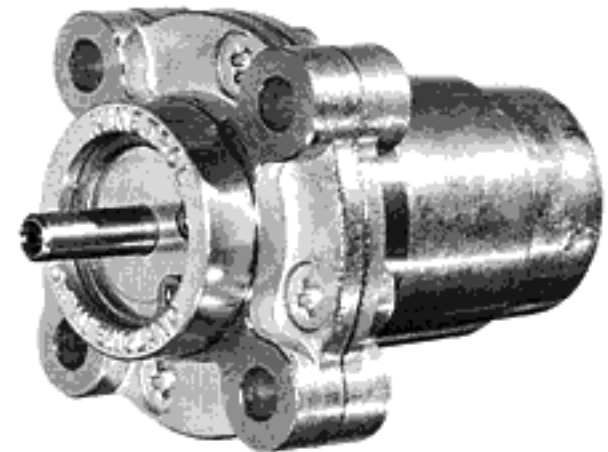


Model Q – CRD CR Dashpot

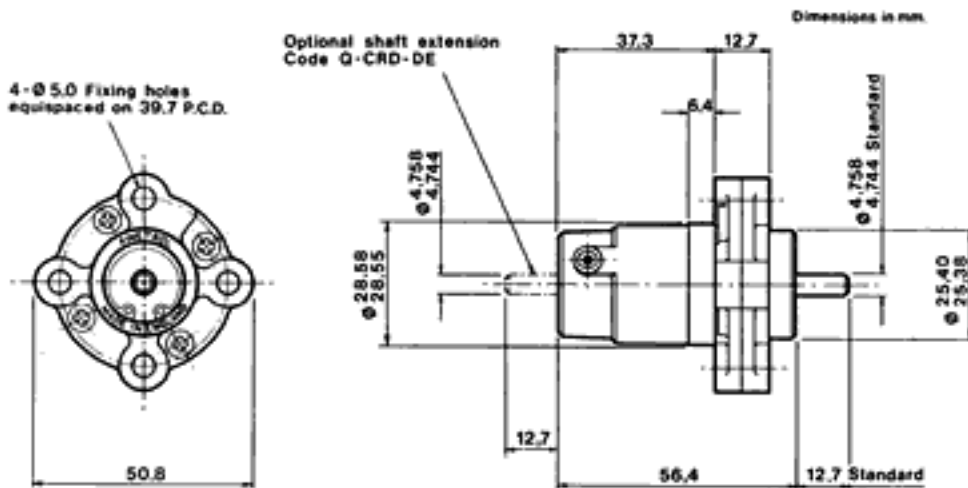


SPECIFICATION

Rate	Fixed - see curves below ($\pm 10\%$)
Max. shaft end load	20 lbf / 89 N
Max. shaft side load	5.2 lbf / 23 N
Ambient temperature range	0°C to 60°C
Frictional torque	0.025 lbf.ins / 0.003 Nm typical
Shaft material	Mild steel 220M07
Body material	Zinc alloy Mazak 3
Weight	7.5 ozs / 214 g



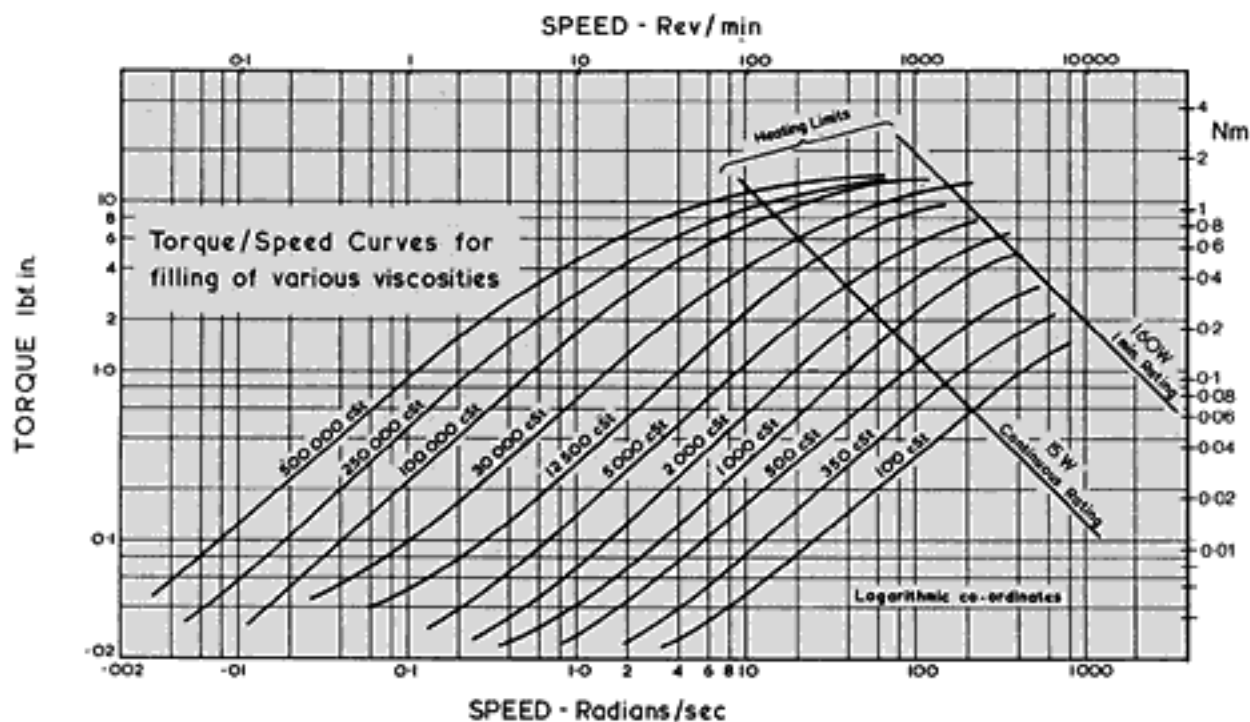
British and Foreign Patents



APPLICATIONS

This small continuous rotation dashpot has a fixed rate performance and is complementary to the larger adjustable rate models S – CRD and T – CRD. It proves to be economical where use of the other models may not be justified.

This dashpot is available with double ended shaft (code suffix '– DE'). In this version, due to the extra shaft seal, there is greater stiction torque (less than 0.025 lbf.ins/seal).



VISCOSITIES AVAILABLE

100; 350; 500; 1,000; 2,000; 5,000; 12,500; 30,000; 100,000; 250,000; 500,000 cSt.

ORDERING CODES

Q – CRD – (Filling Viscosity)

Example: Q – CRD – DE – 12,500 is double ended and has a 12,500 cSt filling.