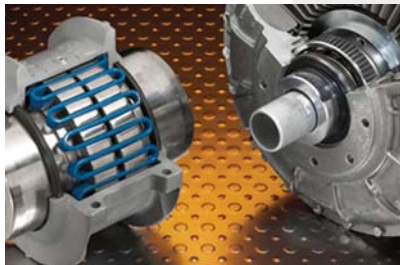


**PRECISION. POWER. PERFORMANCE.**



**REX-NORD**



# Heads Above The Rest

Rexnord represents the most comprehensive portfolio of power transmission and conveying components in the world with brands like Falk™, Rexnord® and Link-Belt®.

Rexnord is a trusted name when it comes to providing skillfully engineered products that improve productivity and efficiency for industrial applications worldwide. We are committed to exceeding customer expectations in every area of our business.

Because of our customer focus, we strive to thoroughly understand the needs of your business and have the resources available to work closely with you to reduce maintenance costs, eliminate redundant inventories and prevent equipment down time.

The rules continue to change in today's increasingly competitive global marketplace. As the marketplace changes, we strive to provide the best overall customer experience through our innovative products and services, exceptional people, and speed in everything we do.

Take a closer look at what separates Rexnord from the rest.

## Delivering On Schedule – Worldwide

We have dedicated production facilities in the U.S., Canada, Mexico, Brazil, China, France, Australia, Germany and Italy. Our Great Britain and Belgium offices provide global availability of quality Rexnord products and services to meet your schedule – not ours.

Flow manufacturing technology offers more cost-effective production and reduced lead times. Our distributor locations and Rexnord account executives provide local availability.

- Metric and imperial products are stocked and shipped worldwide to help minimize downtime
- Modular components allow most products to be assembled for specific requirements from Rexnord facilities and distributor locations around the world
- Online purchasing is available to customers to streamline purchasing and minimize transaction costs

## Unmatched Responsiveness

Rexnord support helps balance capital investment against spares inventories, operating costs and maintenance costs to keep you producing.

Speed Parts online, spare parts information and pricing helps you more efficiently manage spares inventories and maintenance programs. Our online service data includes information on lube intervals, tightening torques, and alignment procedures.

- Field service from factory-trained experts is available worldwide
- Training schools present the latest field-practical gear drive and coupling service techniques
- Renew and Prager restore like new or upgraded performance for significantly less than the price of new equipment



## Proven Products, Superior Performance, the Right People – From a Single Source

One feature of the industrial landscape never changes: Reliance on essential products that give it strength and staying power. Now, more than ever, the need for a profitable solution – from one single flexible and reliable partner – is critical.

No other company can offer such a diverse and extensive selection of components essential to keeping industry on the move. And no other company stands ready to back these products with the same measure of application and service support. For more than 100 years, we at Rexnord have been a primary source of power transmission and conveying products for industries around the globe.

*For more than 100 years, we at Rexnord have been a primary source of power transmission and conveying products for industries around the globe.*

# Gear Drives - Rugged Design, Reliable Construction



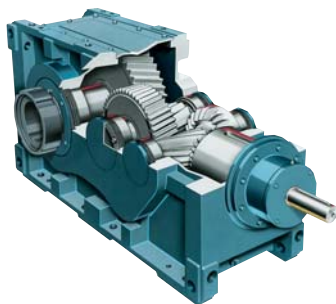
High-quality, reliable and rugged gear designs are installed in the world's most challenging applications. More than 100 years of experience, a full product line, technical support, and local service allow for maximum performance and the lowest total cost.

## Parallel & Right Angle Solutions

### Falk™ Drive One® Universal Drives

Ratios: 1.25:1 to 140:1  
Power: 20 to 1,900 kW  
(25 to 2,500 hp)  
Torque: 5 to 94 kNm  
(58,000 to 840,000 lb-in)

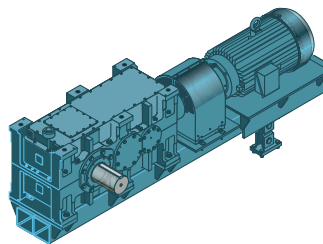
- 9 sizes
- Horizontal or vertical output
- Solid or hollow output shafts
- Base or shaft mounted
- Exclusive 6-sided mounting for unmatched versatility
- Many pre-engineered accessories to provide complete application solutions
- Lowest lifetime cost



### Falk™ Drive One® Conveyor Drives

Ratios: 5.6:1 - 71:1  
Power: 121 to 6,626 kW  
(157 to 8,700 hp)  
Torque: 112 to 245 kNm  
(991,000 to 2,169,000 lb-in)

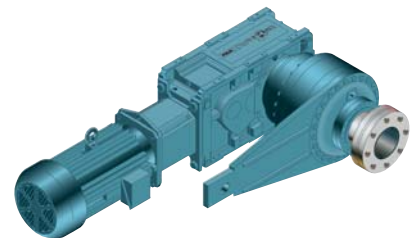
- 4 sizes
- Horizontal output
- Solid output shafts
- Base or shaft mounted
- 60,000 hour L10 life at 1.5 service factor
- Robust universal left/right split design
- Cool running through integrated oil distribution system and low sump levels



### Falk™ Drive One® High Torque Drives

Ratios: 160:1 - 700:1 (higher ratios available)  
Power: to 1000 hp  
Torque: 103 to 458 kNm  
(910,000 to 4,050,000 lb-in)

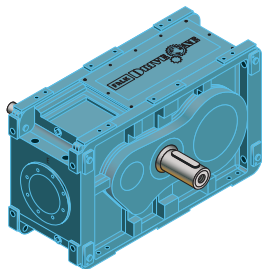
- 6 sizes
- Horizontal output
- Solid or hollow output shafts
- Base or shaft mounted
- High torque from a compact package
- Cost-effective alternative to hydraulic and conventional drives
- Quick delivery from stock components



## Falk™ Drive One® High Thermal Drives

Ratios: 1.25:1 - 25:1  
 Power: 37 to 1,900 kW  
 (50 to 2,500 hp)  
 Torque: 1.3 to 23 kNm  
 (12,000 to 200,000 lb-in)

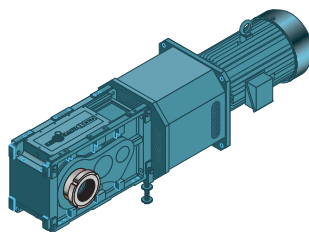
- 8 sizes
- Horizontal output
- Solid output shafts
- Base mounted
- Low cost alternative to oversize drives or drives with complex or expensive cooling accessories
- Generous sump to augment heat dissipation
- Designed to satisfy tough thermal specifications



## Falk™ Drive One® Alignment-Free™

Ratios: 9:1 - 35:1  
 Power: 22 kW to 630 kW  
 (30 to 800 hp)  
 Torque: 5.6 to 130 kNm  
 (30,000 to 1,150,000 lb-in)

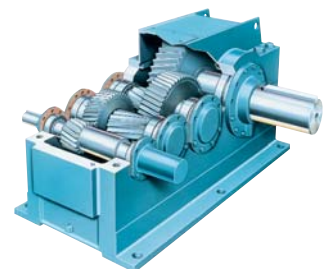
- 11 sizes
- Horizontal output
- Solid and hollow outputs
- Right angle shaft mounting
- Soft start conveyor drive solution
- Universal left/right design, no foundation or shaft alignment required
- NEMA and IEC motor compatible



## Falk™ A+ Plus Parallel/Right-Angle Drives

Ratios: 1.80:1 - 437:1  
 Power: to 14,168 kW  
 (to 19,000 hp)  
 Torque: 2.9 to 621 kNm  
 (26,000 to 5,500,000 lb-in)

- 17 sizes
- Horizontal or vertical output
- Solid or hollow output shafts
- Base or shaft mounted
- Fabricated steel housing
- Magnum no-leak seals
- An effective solution for nearly every application



# Gear Drives - Rugged Design, Reliable Construction



## Concentric Solutions

### Rexnord® Planetgear™ Speed Reducer

Ratios: 3.53:1 to 7052:1  
Power: 750 kW (1,000 hp)  
Torque: to 102 kNm (905,000 lb-in.)

- 13 sizes
- Handles high-shock loads, 250% overload capacity
- Modular design leads to ease of assembly
- Locally available
- Optional scoop, flange, or baseplate mounted motors
- Compact Power Dense package is lighter weight and smaller than traditional reducers
- Taconite Duty Seals provide optimal performance and long seal life
- Internal Backstop is easily field installed. Pawl design is compatible with extreme pressure and synthetic oil



### Rexnord® Shaft Mounted Planetgear™ (SMP)

Ratios: 11 to 1785:1  
Power: to 375 kW (500 hp)  
Torque: 15-339 kNm (140,000 to 3,000,000 lb-in.)

- 5 sizes
- Concentric configurations
- Taconite duty seals
- Optional scoop, flange, or top-mounted motors
- Custom solutions available to meet exact application requirements. Modifications include torque arm, c-face input, and hollow output shaft bore sizes
- Alternative to Traditional Shaft Mounts. Available in 5-7/16" and 6-7/16" hollow bore
- Hydro Advantage, an innovative hydraulic removal system, is integral to the low speed shaft and applies a separating force between the end of the driven shaft and reducer.

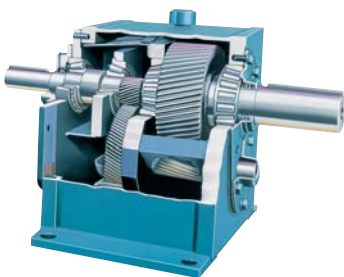


## Shaft-Mounted and Mixer Solutions

### Falk™ UltraMax® Concentric Drives

Ratios: 1.5:1 to 985:1  
 Power: to 375 kW (500 hp)  
 Torque: to 600,000 Nm (530,000 lb-in)

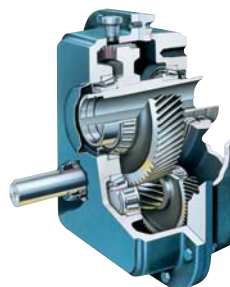
- 12 sizes
- Concentric configurations
- Optional scoop, flange, or baseplate mounted motors
- Helical gearing minimizes noise and vibration
- Available in low ratio for high speed applications
- Heavy-duty bearing and seal protection



### Falk™ Quadrive® Shaft-Mounted Drives

Ratios: 5, 14, 25:1  
 Power: to 224 kW (300 hp)  
 Torque: to 36 547 Nm (350,000 lb-in)

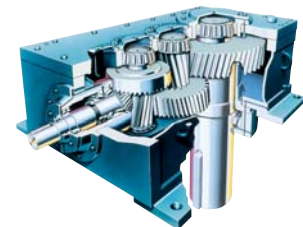
- 11 sizes for flange or shaft mounting
- Horizontal or vertical mounting
- Bushing bores from 25 to 160 mm (1 inch to 6-1/2 inch)
- 5 to 350 rpm output speeds
- Torque Assist TA Taper® bushing guarantees removal



### Falk™ Ram® Mixer Drives

Ratios: 5.06:1 to 1,207:1  
 Power: to 4 100 kW (5,500 hp)  
 Torque: to 429,000 Nm (3,800,000 lb-in)

- 18 sizes in parallel shaft or right-angle shaft configurations
- Solid and hollow shafts
- Top, bottom, or side entry mixer mountings
- Rugged, rigid housing that includes:
  - No leak drywells
  - Extended bearing life
  - Large diameter shafting



# Gear Drives - Rugged Design, Reliable Construction

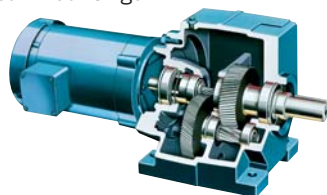


## Falk™ Ultramite® Gearmotors

### UC Helical Concentric

Ratios: 1.4:1 up to 16,000:1  
Power: 19 kW to 37 kW (1/4 hp to 50 hp) capacity  
Torque: to 5 kNm (40,000 lb-in)

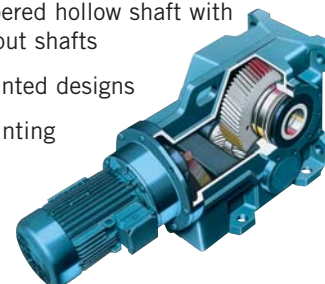
- 7 sizes
- C-face and solid inputs, inch or metric
- Base and flange mounted designs
- Horizontal or vertical mountings



### UB Right-Angle Helical Bevel

Ratios: 8:1 to 10,000:1  
Power: 19 kW to 74 kW (1/4 hp to 100 hp) capacity  
Torque: to 13 kNm (120,000 lb-in)

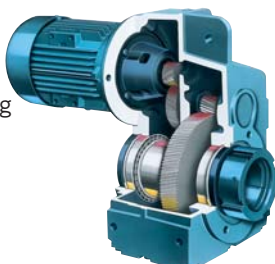
- 9 sizes
- C-face and solid inputs, inch or metric
- Straight bored hollow, tapered hollow shaft with TA bushings, or solid output shafts
- Base, shaft or flange mounted designs
- Horizontal or vertical mounting



### UJ Shaft-Mounted Offset Helical

Ratios: 5:1 to 20,000:1  
Power: 19 kW to 30 kW (1/4 hp to 50 hp) capacity  
Torque: to 5 kNm (48,000 lb-in)

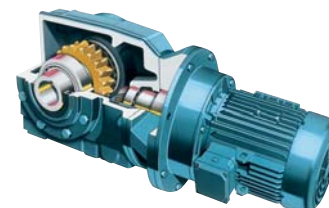
- 6 sizes
- C-face inputs provide convenient, beltless packages
- Base, shaft, or flange mounted designs
- Shaft-mounted designs utilize Falk™'s unique TA Taper® bushing
- CEMA screw conveyor design
- Horizontal or vertical mounting



### UW Right-Angle Helical Worm

Ratios: 8:1 through 60,000:1  
Power: 19 kW to 37 kW (1/4 hp to 50 hp) capacity  
Torque: to 5 kNm (46,000 lb-in)

- 8 sizes
- C-face and solid inputs, inch or metric
- Base, shaft or flange mounted designs
- Straight bored hollow, tapered hollow shaft with TA bushings, or solid output shafts
- Horizontal or vertical mounting

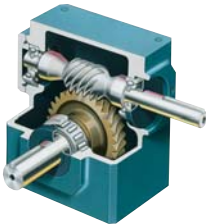


# Worm Gear and Accessories

## Falk™ Omnibox® Worm Gear Drives

Ratios: 5:1 to 3,600:1  
 Power: to 81 kW (100 hp)  
 Torque: to 10 168 Nm (90,000 lb-in)

- 14 sizes for foot, flange, or shaft mounting
- 34 mm thru 254 mm (1.33 inch thru 10 inch) centers
- Vertical or horizontal inputs and outputs



## Falk™ True Hold® Low Speed Backstops

- 16 sizes
- Bores: 38 to 510 mm (1.5 in to 20.0 in)
- Torque: 4 068 Nm to 1 012 847 Nm (3,000 to 747,000 lb-ft)
- Overrunning speeds from 1 to 2,800 rpm



## Falk™ GMax® 6000-Gear Drive Lubricants

Horsepower, Heat, Moisture, and abrasive contamination are constantly working to break down your gear drive lubricant. With Falk™ GMax 6000, you don't have to worry! At Falk™, we manufacture the highest quality gear drives in the world! GMax 6000 is designed to provide superior wear protection in the most demanding gear drive applications. The gearing in Falk™ drives leave the factory filled with GMax 6000 lubricants and are warranted for a period of ten years from the date of shipment against failure due to excessive wear or surface distress.



## Falk™ GMax® 9000-Open Gearing Lubricant

Now we can offer the perfect lubricant to protect heavy-duty gearing - GMax 9000. GMax 9000 is specially formulated to provide the best wear prevention for open gearing and pinions in the industry. It provides this superior wear prevention because of superior viscosity stability and the low coefficient of friction we have designed into it.

## Falk™ AirMax® Breather

### Unique Moisture & Particulate Protection for Enclosed Gear Drives

Reduce premature gear drive failure. During the “inhalation” cycle the AirMax media blocks moisture from entering. During the “exhalation” cycle the media allows moisture to exit.



## Three-Year Warranty



Three-year warranties are offered on the following heavy-duty geared drive products:

- Falk™ Drive One®
- Falk™ A+Plus®
- Rexnord® Planetgear™
- Falk™ UltraMax®
- Falk™ Quadrive®
- Falk™ Ram Mixer®
- Falk™ True Hold®

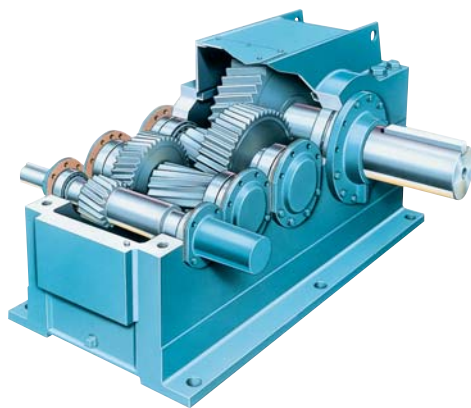
# Gear Drives - Rugged Design, Reliable Construction



## Product Services

### Service Parts

Genuine Falk™, Link-Belt®, and Rexnord® service parts are available for all models and generations of enclosed gear drives. Reverse-engineering of non-current, obsolete or competitive service parts are available from our Prager manufacturing and engineering group.



**Rexnord®**  
**Link-Belt® FALK®**

### Remanufactured Gear Drives

Falk™ Renew® can supply remanufactured gear drives for many Falk™, Link-Belt and Rexnord branded models. A remanufactured gear drive utilizes a econditioned/recertified housing and all new revolving elements. Remanufactured gear drives carry a three-year, "New Unit" warranty.



### Gear Drive Repair

Falk™ Renew® and Prager specialize in repairing Falk™, Link-Belt, and Rexnord gear drives, but can also perform quality repairs on all makes and models. We operate multiple regional repair locations in North America. Our standard repair warranty is 18 months from shipment of the repaired gear drive.



### Field Service

Renew® and Prager field service groups provide a breadth of services. We can provide everything from installation assistance to complete in-place repair and rebuild.



## Falk™ Mill & Custom Products

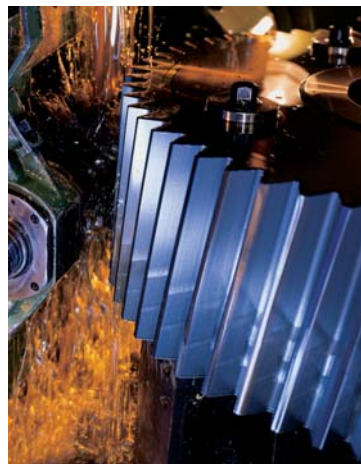
### Gear Drive and Coupling Maintenance Training

This school is four days of intensive hands-on gear drive and coupling maintenance training for today's working maintenance mechanic. The class is designed to provide participants with a basic understanding of the fundamentals of gear drive disassembly and assembly, including lubrication issues and failure analysis of gears, bearings, shafts and seals. Sessions feature parallel and concentric shaft gears, complete with setting bearing floats, setting of mounting distance and backlash for spiral bevel gears.



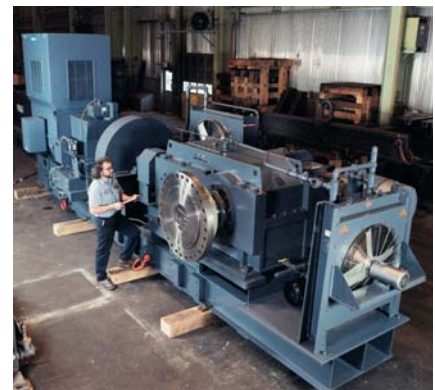
### Falk™ Mill Products

Critical power transfer systems can't afford to be down...period! That's why heavy industry around the world relies on Falk™ Mill Products to redefine total lifetime value. Products include gears, pinions, reverse engineering, steel castings, split kiln tires, and drives. Full service, state-of-the-art manufacturing facilities in the United States and Australia offer exceptional global availability of world-class quality power transmission solutions for heavy industry.



### Custom Drives

Our design, development and manufacturing capabilities are not limited to producing our standard products. From computer-aided design to state-of-the-art quality control operations, few manufacturers are as well equipped as Rexnord. Providing practical solutions to difficult design problems is routine. Custom Drives that develop torque measured in millions of Newton-meters or inch-pounds is all in a day's work. Whatever the project size or special problems, if it involves custom engineering for power transmission, Rexnord offers a unique drive solution.



# Bearings Are Right on Track

Rexnord customers have depended on our premium quality, design, performance and technical support for over 75 years. Our well known brands include Rexnord®, Link-Belt® and MB® encompassing ball bearings, cylindrical roller bearings, sleeve bearings, and collar and adapter mounted spherical roller bearings. Primary applications include industrial machinery, conveyors, chain and belt drives, fans and blowers, and power transmission.



## Rexnord® Roller Bearings

- Full range of housing styles
- Shaft sizes up to 7"
- Super-finished rollers and races
- Four shaft attachment styles
- 3 standard field interchangeable seals
- Auxiliary end caps
- Fully self aligning up to  $\pm 1.5^\circ$
- Field adjustable internal bearing clearance

## Link-Belt® Roller Bearings

- Full range of housing styles
- Shaft sizes up to 5"
- Three shaft attachment styles
- 3 standard seals
- Fully self aligning up to  $\pm 2^\circ$
- Field adjustable internal bearing clearance



## Link-Belt® Adapter Mounted Spherical Roller Bearings

- LER seal is standard
- D5 Pentac auxiliary seal
- D8 taconite duty auxiliary seal
- Adapter mounting and press fit
- H7 bearing/housing fit
- Industry standard SAF interchangeable
- Caps have grade 5 bolts
- Precision dowel holes to position unit for consistent mounting
- Center support bar in base provides extra support for shock loads
- Pry slots in cap for easy removal



## Link-Belt® Cylindrical Roller Bearings

- Standard narrow, wide and intermediate width series
- Shaft sizes up to 280mm
- High capacity designs
- Full complement and retainer designs including formed steel, segmented steel and polymeric
- Manufactured to Industry Standards



## Link-Belt® Sleeve Bearings

- Available in rigid or Flex-Block
- Babbitt, bronze and cast iron bearing surfaces
- Finished machined housing ends for flush mounting of sprockets and sheaves
- 1-piece solid housing
- 2-piece split housing include: split, gibbed joint, and angular joint
- 2-piece bearings have shims to accommodate for adjustments and compensate for wear



# Bearings Are Right on Track



## Link-Belt® Ball Bearings

- Full range of housing styles
- Shaft sizes up to 4" (102mm)
- Centrik-Lok®, set screw and eccentric cam locking collars
- Extended or wide inner rings
- Light and heavy contact seals



## Link-Belt® 300 Series Heavy Duty Ball Bearings

- Full range of housing styles
- Fixed & Expansion units
- Shaft sizes up to 4" (102mm)
- Set screw, eccentric and adapter mount shaft attachments
- Extended or wide inner rings
- Alignable, precision, deep-groove ball bearings
- Super-finished bearing races



## MB® Ball Bearings

- Rugged, heavy-duty Krown Regal® housings
- Shaft sizes up to 2-15/16" (75mm)
- Set screw and eccentric locking collars
- Extended or wide inner rings
- Alignable, precision, deep-groove ball bearings
- Super-finished bearing races



## Link-Belt® Corrosion-Resistant Ball Bearings

- Full range of housings with anti-microbial protection
- Stainless steel bearing insert
- Shaft sizes up to 1-15/16" (49mm)
- Front and rear double lip seals
- Protective safety caps



## Rexnord® Duralon® Bearings

- Corrosion resistant
- Self lubricates to 30,000 PSI
- Light weight
- 75,000 PSI crush strength
- Round, square, and hexagon bores
- Industry leader in tolerance control (O.D. and I. D)
- Designed to fit ball bearing, flange, and pillow blocks housings
- Resist galvanic and fretting corrosion
- Optimizes strength weight ratio
- Eliminates contaminating lubricants
- Minimizes slip stick problems



# Couplings Do the Job, No Matter What



In the past 80 years of coupling manufacturing, Rexnord has seen and solved virtually every problem a coupling application can present. Today's buyer receives the benefits of that experience in a broad line of couplings, from Rexnord Omega®, Thomas®, and Addax® couplings to Falk™ Wrapflex®, Steelflex®, and Lifelign® couplings – all manufactured for quality, reliability and easy maintenance.



## Rexnord® Omega® Elastomer Couplings

- No lubrication required
- Easy replacement without moving the hubs or connected equipment
- Excellent chemical resistance
- Protects equipment by cushioning shock loads and torsional vibration
- Accommodates unavoidable misalignment with low reactionary forces
- No need for coupling disassembly to inspect
- Standard and spacer coupling hubs are identical
- One spacer coupling size can accommodate different shaft separations



## Falk™ Wrapflex® Elastomer Couplings

- No lubrication required
- 9 sizes, 3 types
- Polyurethane element has excellent wear and chemical resistance
- Bores to 186 mm (7.25 inch)
- Capacities to 15 028 Nm (133,000 lb-in)
- Simple to install and non-lubricated
- Standard nylon cover (sizes 5R-50R) with positive location and retention
- Optional epoxy coated cover for Sizes 5R-50R (standard on sizes 60R-80R)



## Rexnord® Thomas® Disc Couplings

- No lubrication required
- Visual inspection
- No backlash
- Low restoring forces
- Wide temperature range
- High reliability
- Broad range of styles and sizes
- Custom design capability



## Rexnord® Addax® Composite Couplings

- No lubrication required
- High misalignment tolerance
- No fretting corrosion
- Extended single spans without intermediate bearings
- Low weight
- Corrosion resistance

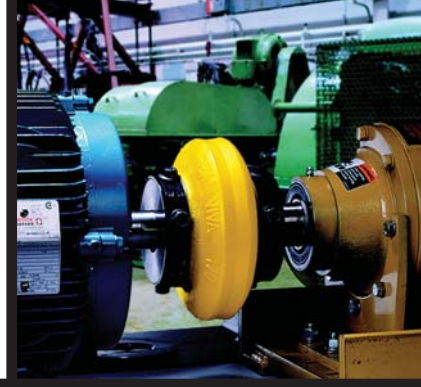


## Falk™ Steelflex® Grid Couplings

- 25 sizes, 11 types
- Torsionally flexible
- Spring-steel grid flexing element
- Bores to 508 mm (20 inch)
- Capacities to 932 000 Nm (8,250,000 lb-in)
- Low initial and long-term cost



# Couplings Do the Job, No Matter What



## Rexnord® Viva® Elastomer Couplings

- No lubrication required
- Easy replacement without moving the hubs or connected equipment
- Excellent chemical resistance
- Protects equipment by cushioning shock loads and torsional vibration
- Accommodates unavoidable misalignment with low reactionary forces
- No need for coupling disassembly to inspect
- Standard spacer coupling hubs are identical allowing reduced inventories
- One spacer coupling size can accommodate different shaft separations
- Higher torque & bore capacity
- Provides a uniform failure area for overload protection if required

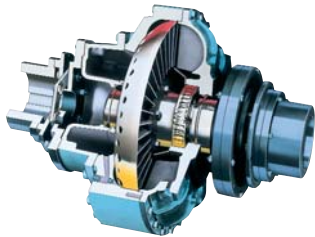
## Falk™ Lifelign® Gear Couplings

- Flange sleeve and continuous sleeve
- 28 sizes, 20 types
- Torsionally rigid
- Precision-crowned, gear-to-gear flexing element
- Bores to 1 200 mm (50 inch)
- Capacities to 8 191 813 Nm (72,500,000 lb-in)
- Lowest initial cost for high capacities



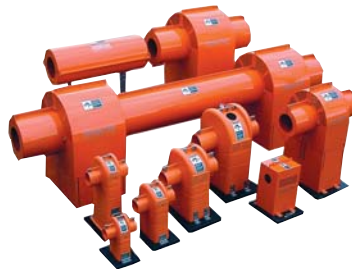
## Falk™ True Torque® Fixed-Fill Fluid Couplings

- 11 sizes, 5 types
- Gear, disc, elastomer, and grid coupling; hollow shaft and sheave connections
- Delay, extended-delay, and non-delay fill
- Power ratings to 1 119 kW (1,500 hp)
- Starting power adjustable from 40% to 250% of full-load torque
- Overload protection



## Falk™ Orange Peel® Rotating Shaft Guards

- 6 types
- Polyethylene, steel, and aluminum
- Shaft, Spacer, and Fluid Couplings, Line Shafts, and Belt Guards (later)
- Diameters to 838 mm (33")
- Lengths to 2 438 mm (96")



## Long Term Grease

Our Long Term Grease (LTG) is specially formulated to provide superior lubrication for flexible shaft couplings.

### Benefits for your Application

- Increased coupling life
- Significantly extended relubrication intervals
- Reduced maintenance costs
- Reduced downtime
- Superior lubrication
- High load carrying capacities
- Usable up to 250°F (121°C)

Falk™ LTG grease is compatible with most coupling lubricants. For optimum performance it is recommended that couplings be cleaned of old grease before packing with LTG.



HEAVY DUTY WARRANTY

A new Steelflex® coupling initially lubricated with the proper amount of LTG as described in the service manual, operated within the specified ambient temperature range and installed and aligned within the limits specified in the installation manual is warranted for five (5) years against lubrication-related grid member failure.

# FlatTop Chains and Components Convey Dependable Solutions

Rexnord® Chains are cutting edge, customer intimate and dependable solutions you can count on every day. Throughout the years, we have been responsible for technological advances in product design of conveyor chains and associated components.



## Rexnord® TableTop® Chains

- Engineered to satisfy a wide range of conveyor applications for virtually any industry
- Straight running and side-flexing chains
- Chains formed from metal or molded from thermoplastic for high strength and speed
- Narrow widths are ideal for multiple strand and variable speed conveyors
- Chains with low backline pressure rollers minimize product damage
- Several chain series couple traditional top plates with roller base chain for increased strength and precision



## Rexnord® MatTop® Chains

- Continuous conveying surface for applications demanding greater width requirements
- Available in both assembled-to-width and molded-to-width configurations
- Pins extend the full width of the chain ensuring maximum strength
- Provides smoother conveying surfaces
- Smaller pitch chains available to minimize the size of dead plates
- Engineered to satisfy a wide range of conveyor applications for virtually any product size



## Rexnord® MultiFlex Chains

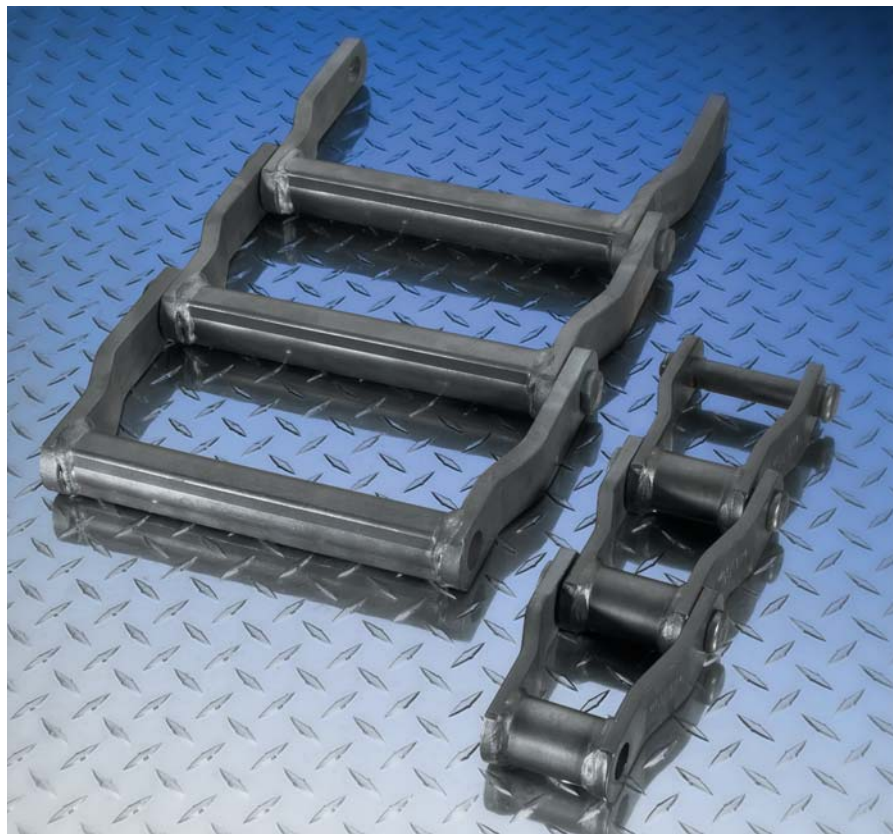
- Ability to flex in all directions
- Allows the construction of conveyors that move products continuously from level to level
- Tight side-flex radius permits compact conveyor construction conserving valuable floor space
- Operates with either corner discs or against sliding corner tracks due to the side profile design
- Multiple strands can be used to convey larger products
- Corner discs convert sliding friction into rolling friction allowing more turns and longer conveyors using a single drive



# Heavy Duty Engineered Steel Chain and Roller Chain for the Most Demanding Applications



Rexnord is the acknowledged industry leader and most experienced chain manufacturer in the world. Our chain designs are created on the latest computer-aided design equipment, and then transmitted via computer network to the manufacturing floor where the designs are turned into finished products, using state-of-the-art manufacturing technologies.



## Engineered Chain

### Engineered Steel Chain

- Ideal for bucket elevators, drives and rugged conveyor service
- Available in pitch sizes from 1.645" to 7"

### Welded Steel Chain

- Economical conveyor products
- Available in pitch sizes from 2.307" to 9"

### Polymeric Chains

- Light to medium duty conveyor and drive applications
- Ideal for areas where corrosion resistance, weight reduction and friction are important
- Available in pitch sizes from 1.63" to 3.5"

### Accessories

- A wide variety of sprockets and elevator buckets are available

### Cast Chain

- Ideal for slow to moderate speed conveyors and drives
- Available in pitch sizes from .9" to 6.05"

### Drop Forged Chain

- Ideal for trolley, scraper and flight conveyors
- Available in pitch sizes from 3" to 9"

### Double Flex Chain

- Made to flex around corners

## Roller Chain

- Ideal for demanding applications from motorcycles and snowmobiles to glass plants and textile mills
- Available in pitch sizes from 3/8" to 4"
- Single and double pitch
- Multiple strand configurations
- Superior performance and long life
- Available in both Rexnord® and Link-Belt® brands

### Our full line of Roller Chain includes:

- ANSI® Standard roller chain (single and multiple strand)
- Attachment chains
- Silent chains
- Oilfield chains
- Double pitch roller chain
- Heavy Series Chain
- Corrosion resistant & Heat resistant chain
- Self lubricating chain
- Hollow pin chain
- Leaf chain
- Specialty chain



# Conveying Equipment – A Solid Investment

Rexnord has a wealth of experience, with satisfied customers for over 6,000 installations in all 50 U.S. states and over 60 countries worldwide. Rexnord is the only systems supplier that manufactures all of the critical system components such as gear drives, bearings, chain, and couplings in-house.



## Conveying Equipment Delivers a Complete Package

Rexnord designs, manufactures and provides after-the-sale service on all critical components used in our equipment. This includes chain, traction wheels, sprockets, bearings, gear reducers and others, thus assuring single-source control and responsibility for manufacturing and service support throughout the life cycle of the equipment.

## Bucket Elevators

Used to lift bulk materials continuously in a process, Rexnord® Bucket Elevators are designed specifically for critical applications. Handling tough materials such as those found in the Cement, Lime, Fertilizer, Chemical, Steel, Aluminum, Forest Products, and Power Generation Industries are our specialty. Rexnord® Bucket Elevators are available in chain, fabric, belt, or steel cable belt configurations. In addition, we offer a wide range of standard or custom configurations.



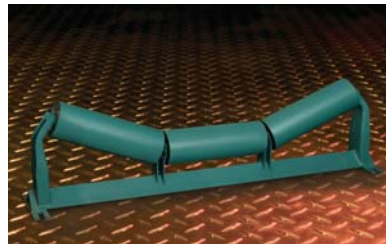
## Apron Conveyors, Feeders, and Drag Conveyors

In addition to bucket elevators, Rexnord conveying equipment division designs, engineers, and fabricates complete apron type pan conveyors and feeders, flight conveyors and drag conveyors. Products shown are only a sample of the many conveyors Rexnord has supplied. As with our bucket elevators, all components are designed to match your material handling requirements from a single source manufacturer.



## Idlers

Rexnord® idlers are available in belt widths from 18" to 96", CEMA, and CEMA+ designs, with custom configurations. Super-sealed against water, dust, abrasives, and other contaminants Rexnord® idlers feature an easy, convenient patented one point greasing system. The greasing provides positive lubrication of all six bearings, which saves time and cuts maintenance costs. Factory sealed idlers are also available for excellent service if re-lubrication is not possible.



## Accessories

A variety of options are available with all our equipment. These include tools for easy assembly or disassembly of bucket elevator and conveyor chains such as our Linkmaster®, Drivemaster® and Dragmaster® Chain Tools.

Standard head platforms, work platforms, walkways and ladders are available with our bucket elevators and conveyors, providing maintenance personnel with ease of access and work areas for inspection or maintenance of this equipment.

## Retrofits

Capacity increases and equipment upgrades are often possible by retrofitting existing bulk material conveying equipment. Rexnord can evaluate your existing equipment to determine actual and maximum through put capacities. We can prepare recommendations on what can be done to achieve new desired capacities and solve performance problems.

## Service Plus

Service Plus is also referred to as after-sale service. Quite simply, Rexnord is there when you need us. We'll provide chain wear life analysis, keep you informed of new products and existing product improvements, recommend maintenance schedules and routines, maintain replacement components, and provide people who can help, should problems ever develop.

Strategically located service centers and warehouses provide quality replacement parts and ensure that Rexnord and Link-Belt replacement components are available to customers.

Rexnord doesn't just supply the elevators; we work with our customers throughout the life cycle of the elevator.

# Rexnord - a History of Aerospace Service

Rexnord aerospace products are used extensively on the world's most technically sophisticated aircraft from Stealth bombers and fighters to the newest commercial airplanes and even on the space shuttles. With more than 50 years of aerospace experience, Rexnord has been involved with virtually every major commercial and military airframe design effort during that time.



**Cartriseal® Mechanical Seals** - Since 1946 Cartiseal has been leading the way with aerospace sealing solutions. Cartiseal proves sealing solutions for turbine engines, APU, starters, gear boxes, and others.

**Shafer® Bearings** - Shafer has been a leader in aerospace roller bearing since 1938. Shafer roller bearings are particularly suited for flight control systems, landing gear and door systems.

**Shafer® Tooling** - Shafer has been providing specialized tooling for roller bearing since 1968. Shafer tools are a crucial part of proper bearing maintenance and installation.

**PSI® Aerospace Bearing** - Started in 1979, PSI has been leading the industry in slotted-entry bearings. These bearings are used in turbine engines mounts and as pivot points within landing gear, engine controls and thrust reversers.

**Tuflite® Composite Bearings** - Has been creating composite bearings since 1969. Tuflite composite bearings offer performance capabilities similar to their metal backer counterparts but with lighter weight and more predictable wear life.



## Stearns® Brakes, Clutches and Electronic Components Focused on Performance

For over 70 years, Stearns has been recognized for our innovation and our superior quality in the clutch and brake industry. Stearns was founded in 1916, and invented the first DC clutch and brake in 1928. Some of these first clutches and brakes built are still in service today.

Over the years we have added many options and modifications to tailor the product to our customers' specific needs, and currently have numerous factory-available, pre-engineered options to choose from.

Our product lines have expanded to include DC direct-acting brakes, including a European-style IEC mount series; electronics, including rectifiers and status switches to support our clutch and brake product line; and our newest product, permanent magnet brakes. We also offer a full line of the following products:

- Spring-set (power-off) brakes
- Electrically-set (power-on) clutches and brakes
- Heavy Duty Clutches and Brakes
- SINPAC electronic centrifugal switches

# Advanced Research Results in Cutting Edge Products

Ongoing research and testing are critical to the development of products that help our customers maintain a competitive advantage. And that's an advantage our customers have come to expect from Rexnord.

Rexnord Technical Service (RTS) Center is one of the most sophisticated on-site research facilities in the industry, with more than 30 years of experience as a mechanical and materials engineering services laboratory, with its roots in aerospace and industrial technology.



Here, our engineers and technicians employ the latest diagnostic and test equipment to explore promising new product designs, analyze component stress and fatigue factors, and pioneer new materials and manufacturing techniques. Our experienced, dedicated workforce takes pride in their skills and product, and assures that each finished product meets or exceeds exacting quality control standards.

We've responded to the needs of a changing market with innovative designs and new materials that enhance our customers' productivity. As a result, we can give you the convenience of more choices from a single source supplier. As well as more options and design flexibility in the specification of our products to individual applications.

Our commitment to delivering products of exceptional quality and unequalled application support is stronger than ever. And to serve you better, we're determined to maintain our position as the industry's most trusted and complete source of power transmission and conveying products worldwide.

*Rexnord's  
value is  
more than  
just products.  
It's a  
reputation,  
a commitment  
to service,  
a promise  
of quality  
along with  
reliable  
product  
performance.*

# World Class Customer Service

For more than 100 years, the dedicated people of Rexnord have delivered excellence in quality and service to our customers around the globe. Rexnord is a trusted name when it comes to providing skillfully engineered products that improve productivity and efficiency for industrial applications worldwide. We are committed to exceeding customer expectations in every area of our business: product design, application engineering, operations and customer service.

Because of our customer focus, we are able to more thoroughly understand the needs of your business and have the resources available to work closely with you to reduce maintenance costs, eliminate redundant inventories and prevent equipment down time.

Rexnord represents the most comprehensive portfolio of power transmission and conveying components in the world with the brands you know and trust.

Falk, Rexnord, RENEW, Drive One, A+Plus, UltraMax, Quadrive, Ultramite, Omnibox, Ram, GMAX, True Hold, Krown Regal, Omega, Thomas, Addax, Orange Peel, Wrapflex, Steelflex, Lifelign, True Torque, Duralon, MB, Centri-Lok, TableTop and MatTop are registered trademarks of Rexnord Industries, LLC.

Falk, Alignment-Free, Planetgear, AirMax, Freedom, and Flex-Block are trademarks of Rexnord industries, LLC.

Link-Belt is a registered trademark of FMC Corporation.

ANSI is a registered trademark of the American National Standards Institute.

## WORLDWIDE CUSTOMER SERVICE

### AUSTRALIA

Rexnord Australia Pty. Ltd.  
Picton, New South Wales  
Phone: 61-2-4677-3811  
Fax: 61-2-4677-3812

### BRAZIL

Rexnord Correntes Ltda.  
Sao Leopoldo - RS  
Phone: 55-51-579-8022  
Fax: 55-51-579-8029

### CANADA

Rexnord Canada Ltd.  
Scarborough, Ontario  
Phone: 1-416-297-6868  
Fax: 1-416-297-6873

### CHINA

Rexnord China  
Shanghai, China  
Phone: 86-21-62701942  
Fax: 86-21-62701943

### EUROPE

Rexnord NV/SA  
Mechelen, Belgium  
Phone: 32-15-443811  
Fax: 32-15-443860

Rexnord Kette GmbH  
Betzdorf, Germany  
Phone: 49-2741-2840  
Fax: 49-2741-284-385

### LATIN AMERICA

Rexnord International, Inc.  
Milwaukee, Wisconsin  
Phone: 1-414-643-2366  
Fax: 1-414-643-3222  
E-mail: international2@rexnord.com

### MEXICO

Rexnord S.A. de C.V.  
Queretaro, Qro.  
Phone: 52-442-218.5000  
Fax: 52-442-218-1090

### SINGAPORE

Rexnord International, Inc.  
Singapore City, Singapore  
Phone: 65-6338-5622  
Fax: 65-6338-5422

### UNITED STATES

Customer Service  
Phone: 1-866-REXNORD  
(1-866-739-6673)  
Fax: 1-614-675-1898  
E-mail: rexnordcs(state)@rexnord.com  
Example: rexnordcsohio@rexnord.com

### ALL COUNTRIES NOT LISTED

Rexnord International, Inc.  
Milwaukee, Wisconsin  
Phone: 1-414-643-2366  
Fax: 1-414-643-3222  
E-mail: international1@rexnord.com



[www.rexnord.com](http://www.rexnord.com)