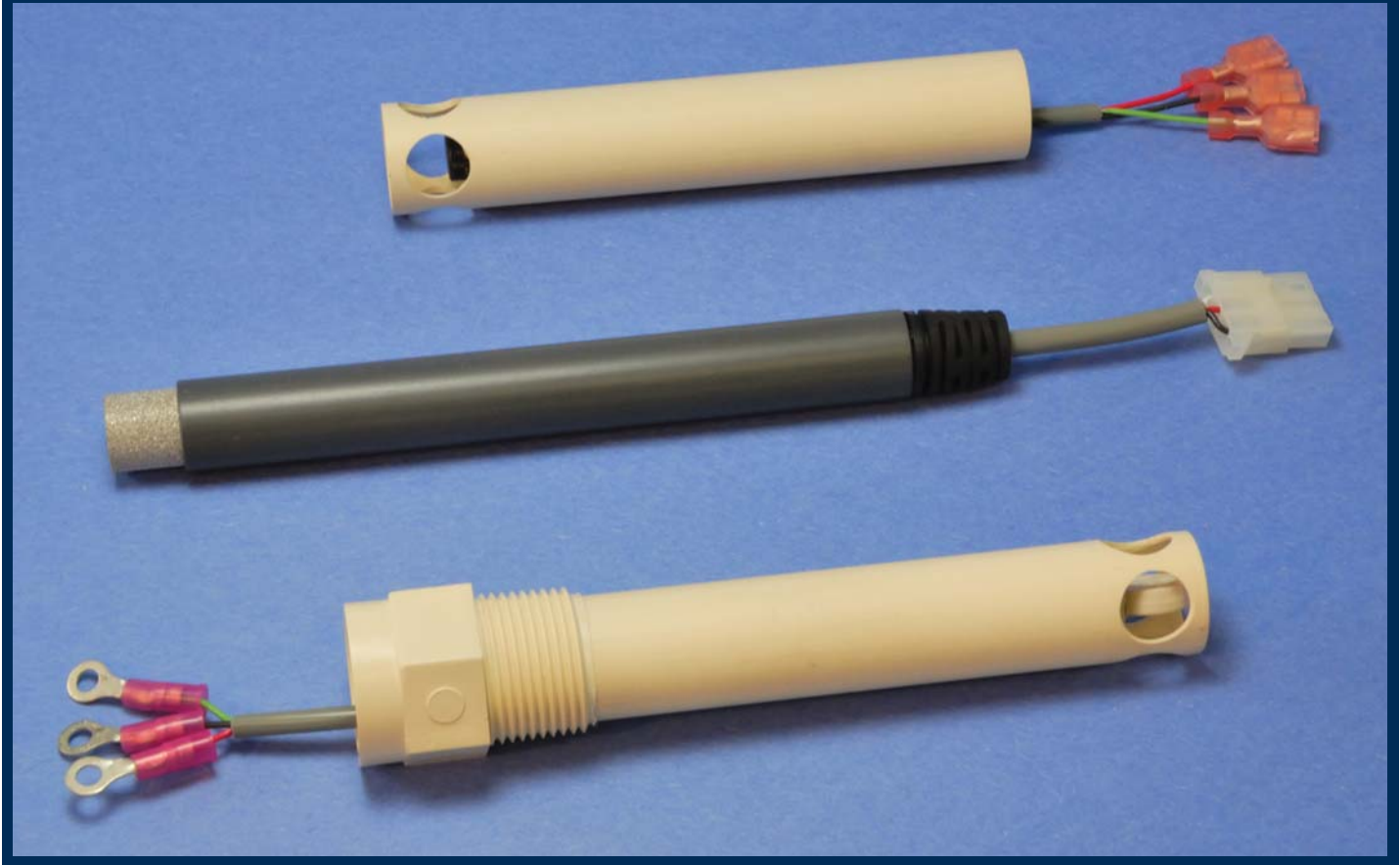




# HumiSense®

Relative Humidity Transmitters  
both Analog and Digital



## PRODUCT FEATURES

### Built to Order Philosophy:

- Per customer specs
- Prompt delivery
- Proven designs
- Turnkey solutions

### Custom Designs:

- Inputs
- Outputs
- Power
- Interface
- Packaging
- Termination

### Standards:

- RoHS compliant available
- NIST traceable calibration

## PRODUCT SPECIFICATIONS

### Ranges:

- Customer defined

### Outputs:

- Any range voltage or current

### Power Supplies:

- VDC, universal loop

### Computer Communications:

- RS232, RS485, USB, Ethernet, Canbuss

### Packaging:

- Open PC board or encapsulated
- Custom Styles

## PRODUCT COMMITMENT

### Built to Last:

- 1 Year warranty
- Rugged construction
- Durable designs
- Stainless steel sheaths available
- Wide ambient ranges available

### Full Service Factory Direct:

- Sales
- R&D
- System analysis
- Product design
- Manufacturing
- Quality control
- Warranty support
- Customer support

[sales@thermalogic.com](mailto:sales@thermalogic.com)

800-343-4492

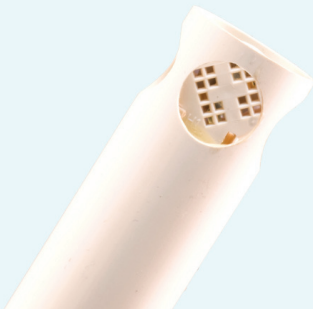
[www.thermalogic.com](http://www.thermalogic.com)

**Thermalogic Corporation • 22 Kane Industrial Drive • Hudson, MA 01749**

Thermalogic® and HumiSense® are registered trademarks of Thermalogic Corporation.

# HumiSense® Humidity Transmitters

Thermalogic specializes in efficient delivery of built to order transmitters. Our custom build philosophy offers solutions that are not readily available with many off-the-shelf products. Thermalogic can work from your drawings, sketches, descriptions, ideas or obsolete units to meet your exact control needs. Below is a representation of an almost infinite array of our transmitters. The specifications listed below are just a small sample of what is available. **CUSTOM SPECIFICATIONS DO NOT MEAN LONG DELAYS.**



10-90 %RH Element

## Packaging

- ◇ 7/8" Diameter Tube
- ◇ 1/2" Diameter Tube
- ◇ PVC Plastic Tube
- ◇ Stainless Steel Tube
- ◇ Custom Encapsulated
- ◇ Custom Open PC Board
- ◇ Wall Mount Enclosure
- ◇ Custom Enclosure

## Terminations

- ◇ Fast-Ons
- ◇ Euro Style Connectors
- ◇ Plug-in Connectors
- ◇ Locking Connectors
- ◇ Military Connectors
- ◇ Pigtail Wire Leads
- ◇ D SUB Connectors
- ◇ Right Angle Connectors
- ◇ Customer Specified



10-95 %RH Element

## Outputs

- ◇ Any mA Range
- ◇ Any VDC Range

## Power

- ◇ Battery
- ◇ Any VAC
- ◇ Any VDC
- ◇ Power Over Ethernet
- ◇ 85 to 265 VAC Universal

## Interface

- ◇ Protocol Matching
- ◇ RS 232
- ◇ RS 485/422
- ◇ USB
- ◇ I<sup>2</sup>C
- ◇ CANbus
- ◇ Ethernet
- ◇ GPIB
- ◇ Modbus



10-90 %RH Element with  
Thermistor Temperature Sensor



10-90 %RH Element with  
RTD Temperature Sensor



**Temperature, Humidity, Process Controls, Sensors & Transmitters**  
**Design, Engineering, Manufacturing for OEMs & Volume Users**

[sales@thermalogic.com](mailto:sales@thermalogic.com)

800-343-4492

[www.thermalogic.com](http://www.thermalogic.com)

**Thermalogic Corporation • 22 Kane Industrial Drive • Hudson, MA 01749**