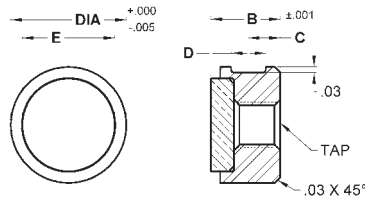


**REST PADS**

**Carbide Tipped | Tapped | Inch**



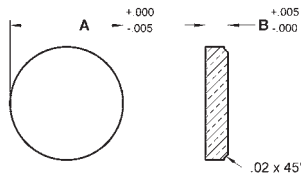
Constructed with a carbide pad brazed to a heat treated alloy steel body for better wear. Black oxide finish. Blind-hole tap for back side mounting. Flat on O.D. for set screw mounting. See page 91 for mounting specifications.

**INCH**

Part #	B Height	C Flat Pos.	D Flat Width	E Pad Dia.
<b>3/8" Dia - #10-32 Tap</b>				
CRP-40	3/8	11/64	3/16	5/16
CRP-405	1/2	15/64	3/16	5/16
<b>1/2" Dia - #10-32 Tap</b>				
CRP-50	3/8	11/64	3/16	3/8
CRP-53	1/2	15/64	3/16	3/8

Part #	B Height	C Flat Pos.	D Flat Width	E Pad Dia.
<b>5/8" Dia - 1/4-28 Tap</b>				
CRP-62	3/8	11/64	3/16	1/2
CRP-625	1/2	15/64	3/16	1/2
<b>3/4" Dia - 1/4-28 Tap</b>				
CRP-75	3/8	11/64	3/16	5/8
CRP-755	1/2	15/64	3/16	5/8
<b>1" Dia - 1/4-28 Tap</b>				
CRP-81	3/8	11/64	3/16	3/4

**Solid Carbide | No Hole | Inch**



Made from solid carbide for high wear resistance. Can be brazed or bonded in jigs, fixtures, clamps, etc. The bottom is chamfered for clearance in mounting pocket. See page 91 for mounting specifications.

**INCH**

Part #	A Dia.	B Height
CC-1F	1/4	1/8
CC-2F	5/16	1/8
CC-3F	3/8	1/8
CC-4F	1/2	1/8

Part #	A Dia.	B Height
CC-5F	5/8	1/8
CC-6F	3/4	1/8
CC-8F	1	5/32



**REST PADS**



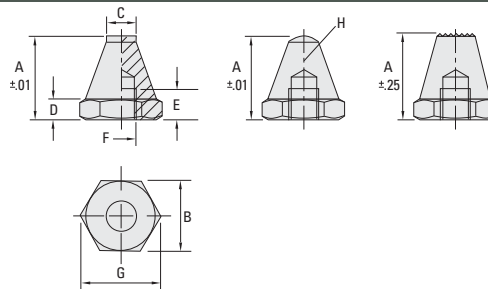
Flat



Radius



Serrated

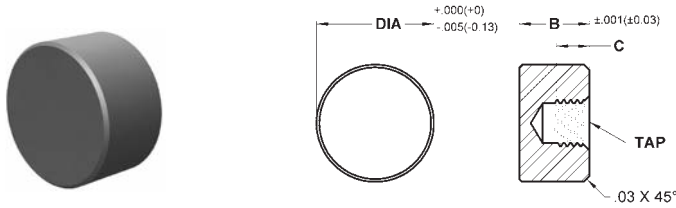


These rest pads provide support or act as stops for both rough and machined parts. To change into a male thread, simply glue in a threaded stud. Body is made from tempered steel, heat treated with black oxide finish.

Flat Part #	Radius Part #	Serrated Part #	A	B	C	D	E	F	G	H
KBJ810-06012-F	KBJ810-06012-R	KBJ810-06012-S	12.5	11	6	3	4	M6	12.7	5.0
KBJ810-06025-F	KBJ810-06025-R	KBJ810-06025-S	25.0	11	6	3	7	M6	12.7	5.0
KBJ810-08015-F	KBJ810-08015-R	KBJ810-08015-S	15.0	13	8	4	6	M8	15.0	8.5
KBJ810-08030-F	KBJ810-08030-R	KBJ810-08030-S	30.0	13	8	4	9	M8	15.0	8.5
KBJ810-10020-F	KBJ810-10020-R	KBJ810-10020-S	20.0	17	10	5	9	M10	19.6	9.0
KBJ810-10040-F	KBJ810-10040-R	KBJ810-10040-S	40.0	17	10	5	13	M10	19.6	9.0
KBJ810-12025-F	KBJ810-12025-R	KBJ810-12025-S	25.0	19	12	6	11	M12	21.9	12.8
KBJ810-12050-F	KBJ810-12050-R	KBJ810-12050-S	50.0	19	12	6	16	M12	21.9	12.8

## REST PADS

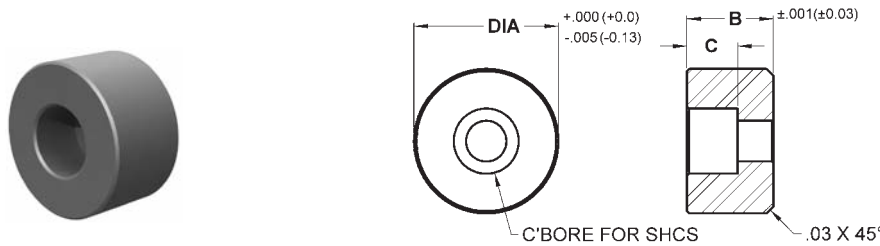
### Steel | Tapped | Inch & Metric



Made from 8620 steel, carburized and hardened to Rc 58/60 with .050" case. Black oxide finish. Blind-hole tap for back side mounting. See page 91 for mounting specifications.

INCH			METRIC		
Part #	B Height	C Tap Depth	Part #	B Height	C Tap Depth
<b>5/16" Dia - #8-32 Tap</b>			<b>8mm Dia - M4x0.7 Tap</b>		
SRP-30	3/8	3/16	MSRP-080	10	5
SRP-305	1/2	5/16	MSRP-082	12	6.4
<b>3/8" Dia - #10-32 Tap</b>			<b>10mm Dia - M5x0.8 Tap</b>		
SRP-40	3/8	3/16	MSRP-100	10	5
SRP-405	1/2	5/16	MSRP-102	12	6.4
<b>1/2" Dia - #10-32 Tap</b>			<b>12mm Dia - M5x0.8 Tap</b>		
SRP-50	3/8	3/16	MSRP-120	10	5
SRP-53	1/2	5/16	MSRP-122	12	6.4
<b>5/8" Dia - 1/4-28 Tap</b>			<b>16mm Dia - M6x1.0 Tap</b>		
SRP-62	3/8	3/16	MSRP-160	10	5
SRP-625	1/2	5/16	MSRP-162	12	6.4
<b>3/4" Dia - 1/4-28 Tap</b>			<b>20mm Dia - M6x1.0 Tap</b>		
SRP-75	3/8	3/16	MSRP-200	10	5
SRP-755	1/2	5/16	MSRP-202	12	6.4
<b>1" Dia - 1/4-28 Tap</b>			<b>25mm Dia - M6x1.0 Tap</b>		
SRP-81	3/8	3/16	MSRP-250	10	5
SRP-815	1/2	5/16	MSRP-252	12	6.4

### Steel | Counter Bored | Inch & Metric

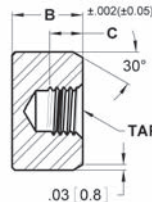
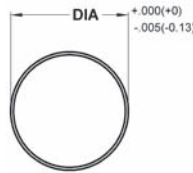
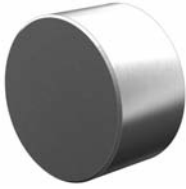


Made from 8620 steel, carburized and hardened to Rc 58/60 with .050" case. Black oxide finish. Counter bored hole for front mounting with a socket head cap screw. See page 91 for mounting specifications.

INCH			METRIC		
Part #	B Height	C C' Bore Depth	Part #	B Height	C C' Bore Depth
<b>3/8" Dia - Counter Bored for #6 SHCS</b>			<b>10mm Dia - Counter Bored for M3 SHCS</b>		
SRP-40-C	3/8	3/16	MSRP-100-C	10	4
SRP-405-C	1/2	3/16	MSRP-102-C	12	4
<b>1/2" Dia - Counter Bored for #8 SHCS</b>			<b>12mm Dia - Counter Bored for M4 SHCS</b>		
SRP-50-C	3/8	7/32	MSRP-120-C	10	5.6
SRP-53-C	1/2	7/32	MSRP-122-C	12	5.6
<b>5/8" Dia - Counter Bored for #8 SHCS</b>			<b>16mm Dia - Counter Bored for M5 SHCS</b>		
SRP-62-C	3/8	7/32	MSRP-160-C	10	6.6
SRP-625-C	1/2	7/32	MSRP-162-C	12	6.6
<b>3/4" Dia - Counter Bored for #10 SHCS</b>			<b>20mm Dia - Counter Bored for M6 SHCS</b>		
SRP-75-C	3/8	1/4	MSRP-200-C	10	7.6
SRP-755-C	1/2	1/4	MSRP-202-C	12	7.6
<b>1" Dia - Counter Bored for 1/4" SHCS</b>			<b>25mm Dia - Counter Bored for M6 SHCS</b>		
SRP-81-C	3/8	9/32	MSRP-250-C	10	7.6
SRP-815-C	1/2	9/32	MSRP-252-C	12	7.6

## REST PADS

### Stainless Steel | Tapped | Inch & Metric



Made from 17-4 stainless steel which provides high strength as well as protection against chemical and environmental corrosion. Heat treated to Rc 43/46. Blind-hole tap for back side mounting. See page 91 for mounting specifications.

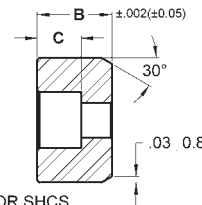
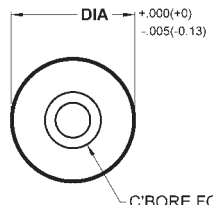
#### INCH

Part #	B Height	C Tap Depth
<b>5/16" Dia - #8-32 Tap</b>		
CSRP-30	3/8	3/16
CSRP-305	1/2	5/16
<b>3/8" Dia - #10-32 Tap</b>		
CSRP-40	3/8	3/16
CSRP-405	1/2	5/16
<b>1/2" Dia - #10-32 Tap</b>		
CSRP-50	3/8	3/16
CSRP-53	1/2	5/16
<b>5/8" Dia - 1/4-28 Tap</b>		
CSRP-62	3/8	3/16
CSRP-625	1/2	5/16
<b>3/4" Dia - 1/4-28 Tap</b>		
CSRP-75	3/8	3/16
CSRP-755	1/2	5/16
<b>1" Dia - 1/4-28 Tap</b>		
CSRP-81	3/8	3/16
CSRP-815	1/2	5/16

#### METRIC

Part #	B Height	C Tap Depth
<b>8mm Dia - M4x0.7 Tap</b>		
MCSR-080	10	5
MCSR-082	12	6.4
<b>10mm Dia - M5x0.8 Tap</b>		
MCSR-100	10	5
MCSR-102	12	6.4
<b>12mm Dia - M5x0.8 Tap</b>		
MCSR-120	10	5
MCSR-122	12	6.4
<b>16mm Dia - M6x1.0 Tap</b>		
MCSR-160	10	5
MCSR-162	12	6.4
<b>20mm Dia - M6x1.0 Tap</b>		
MCSR-200	10	5
MCSR-202	12	6.4
<b>25mm Dia - M6x1.0 Tap</b>		
MCSR-250	10	5
MCSR-252	12	6.4

### Stainless Steel | Counter Bored | Inch & Metric



Made from 17-4 stainless steel which provides high strength as well as protection against chemical and environmental corrosion. Heat treated to Rc 43/46. Counter bored hole for front mounting with a socket head cap screw. See page 91 for mounting specifications.

#### INCH

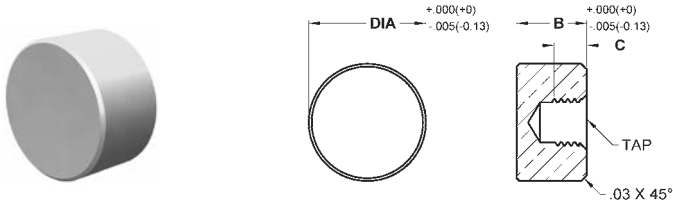
Part #	B Height	C C'Bore Depth
<b>3/8" Dia - Counter Bored for #6 SHCS</b>		
CSRP-40-C	3/8	3/16
CSRP-405-C	1/2	3/16
<b>1/2" Dia - Counter Bored for #8 SHCS</b>		
CSRP-50-C	3/8	7/32
CSRP-53-C	1/2	7/32
<b>5/8" Dia - Counter Bored for #8 SHCS</b>		
CSRP-62-C	3/8	7/32
CSRP-625-C	1/2	7/32
<b>3/4" Dia - Counter Bored for #10 SHCS</b>		
CSRP-75-C	3/8	1/4
CSRP-755-C	1/2	1/4
<b>1" Dia - Counter Bored for 1/4" SHCS</b>		
CSRP-81-C	3/8	9/32
CSRP-815-C	1/2	9/32

#### METRIC

Part #	B Height	C C'Bore Depth
<b>10mm Dia - Counter Bored for M3 SHCS</b>		
MCSR-100-C	10	4
MCSR-102-C	12	4
<b>12mm Dia - Counter Bored for M4 SHCS</b>		
MCSR-120-C	10	5.6
MCSR-122-C	12	5.6
<b>16mm Dia - Counter Bored for M5 SHCS</b>		
MCSR-160-C	10	6.6
MCSR-162-C	12	6.6
<b>20mm Dia - Counter Bored for M6 SHCS</b>		
MCSR-200-C	10	7.6
MCSR-202-C	12	7.6
<b>25mm Dia - Counter Bored for M6 SHCS</b>		
MCSR-250-C	10	7.6
MCSR-252-C	12	7.6

## REST PADS

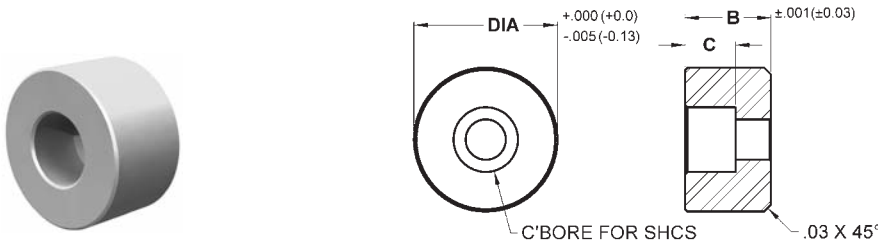
### Delrin | Tapped | Inch & Metric



Made from white Delrin. Non-marring and non-absorbing. Blind-hole tap for back side mounting. See page 91 for mounting specifications.

INCH			METRIC		
Part #	B Height	C Tap Depth	Part #	B Height	C Tap Depth
<b>5/16" Dia - #8-32 Tap</b>			<b>8mm Dia - M4x0.7 Tap</b>		
DRP-30	3/8	3/16	MDRP-080	10	5
DRP-305	1/2	5/16	MDRP-082	12	6.4
<b>3/8" Dia - #10-32 Tap</b>			<b>10mm Dia - M5x0.8 Tap</b>		
DRP-40	3/8	3/16	MDRP-100	10	5
DRP-405	1/2	5/16	MDRP-102	12	6.4
<b>1/2" Dia - #10-32 Tap</b>			<b>12mm Dia - M5x0.8 Tap</b>		
DRP-50	3/8	3/16	MDRP-120	10	5
DRP-53	1/2	5/16	MDRP-122	12	6.4
<b>5/8" Dia - 1/4-28 Tap</b>			<b>16mm Dia - M6x1.0 Tap</b>		
DRP-62	3/8	3/16	MDRP-160	10	5
DRP-625	1/2	5/16	MDRP-162	12	6.4
<b>3/4" Dia - 1/4-28 Tap</b>			<b>20mm Dia - M6x1.0 Tap</b>		
DRP-75	3/8	3/16	MDRP-200	10	5
DRP-755	1/2	5/16	MDRP-202	12	6.4
<b>1" Dia - 1/4-28 Tap</b>			<b>25mm Dia - M6x1.0 Tap</b>		
DRP-81	3/8	3/16	MDRP-250	10	5
DRP-815	1/2	5/16	MDRP-252	12	6.4

### Delrin | Counter Bored | Inch & Metric



Made from white Delrin. Non-marring and non-absorbing. Counter bored hole for front mounting with a socket head cap screw. See page 91 for mounting specifications.

INCH			METRIC		
Part #	B Height	C C'Bole Depth	Part #	B Height	C C'Bole Depth
<b>3/8" Dia - Counter Bored for #6 SHCS</b>			<b>10mm Dia - Counter Bored for M3 SHCS</b>		
DRP-40-C	3/8	3/16	MDRP-100-C	10	4
DRP-405-C	1/2	3/16	MDRP-102-C	12	4
<b>1/2" Dia - Counter Bored for #8 SHCS</b>			<b>12mm Dia - Counter Bored for M4 SHCS</b>		
DRP-50-C	3/8	7/32	MDRP-120-C	10	5.6
DRP-53-C	1/2	7/32	MDRP-122-C	12	5.6
<b>5/8" Dia - Counter Bored for #8 SHCS</b>			<b>16mm Dia - Counter Bored for M5 SHCS</b>		
DRP-62-C	3/8	7/32	MDRP-160-C	10	6.6
DRP-625-C	1/2	7/32	MDRP-162-C	12	6.6
<b>3/4" Dia - Counter Bored for #10 SHCS</b>			<b>20mm Dia - Counter Bored for M6 SHCS</b>		
DRP-75-C	3/8	1/4	MDRP-200-C	10	7.6
DRP-755-C	1/2	1/4	MDRP-202-C	12	7.6
<b>1" Dia - Counter Bored for 1/4" SHCS</b>			<b>25mm Dia - Counter Bored for M6 SHCS</b>		
DRP-81-C	3/8	9/32	MDRP-250-C	10	7.6
DRP-815-C	1/2	9/32	MDRP-252-C	12	7.6