

**REPLACEABLE PAD OVERVIEW**

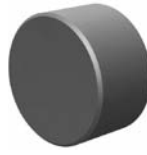
**Rest Pads & Gripper Pads**



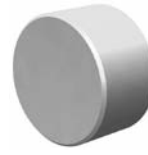
**Solid Carbide**  
High impact carbide pads. Can be brazed or bonded into place.



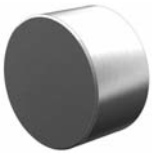
**Carbide Tipped**  
Constructed with a high impact carbide pad brazed to a heat treated alloy steel body. Mounts with tapped hole or a flat on the outside diameter for set screw mounting.



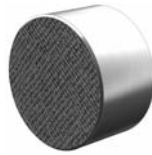
**Hardened Steel**  
Made from 8620 steel, carburized and hardened to Rc 58/60 .050" case with black oxide finish. Mounts with tapped hole or counter bored hole.



**Non-Marring Delrin**  
Manufactured from white Delrin. Mounts with counter bored or tapped hole.



**Stainless Steel**  
The pad is made from 17-4 stainless steel, hardened to Rc 43/46. Mounts with tapped or counter bored hole.



**Abrasive Diamond Surface**  
The abrasive surface is permanently fused to a 17-4 stainless steel pad, hardened to Rc 43/46. The surface texture is comparable to a 100 grit abrasive. Mounts with tapped or counter bored hole.

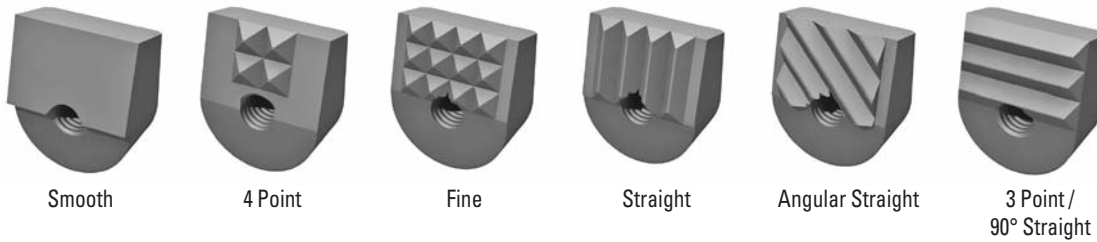


**Sof-Top™ Urethane Surface**  
The urethane surface is permanently bonded to a 300 series stainless steel pad. The urethane provides excellent protection against damage on delicate work surfaces. They are available in three durometers. Tapped hole mounting.

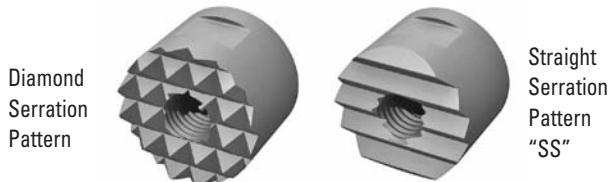
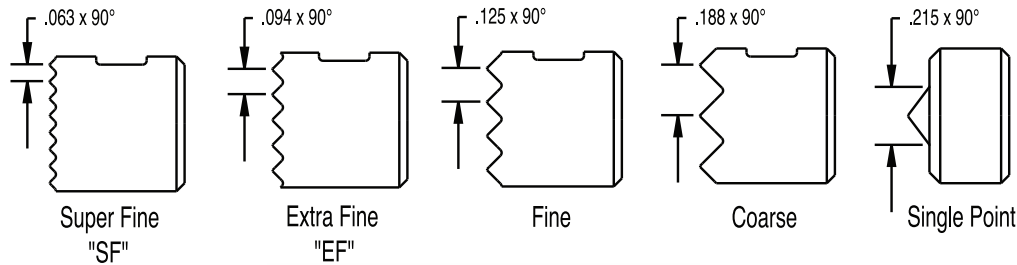
**TOOTH PATTERN SPECIFICATIONS**

Throughout this catalog, you will find reference to tooth patterns on all serrated grippers. Please use the chart below for specific information regarding these tooth patterns. If additional information is required, please contact us.

**Angle Grippers**

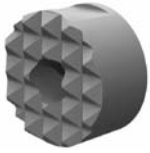


**Round and Square Grippers**



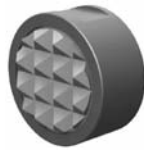
**REPLACEABLE PAD OVERVIEW**

**Serrated Gripper Pads**



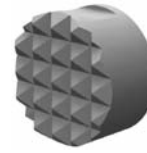
**High Speed Tool Steel**

Round, square, edge, and angle grippers manufactured from M-2 high speed tool steel, hardened to Rc 60/62 with black oxide finish. Mounts with tapped hole, counter bored hole or a flat on the outside diameter for set screw mounting.



**Carbide Tipped**

Round, square, and angle grippers constructed with a high impact carbide pad brazed to a heat treated alloy steel body. Mounts with tapped hole or a flat on the outside diameter for set screw mounting.



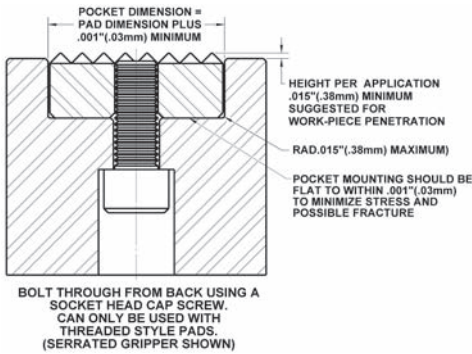
**Solid Carbide**

Round and square grippers manufactured from high impact carbide in a solid gripper pad or as a solid gripper body with a threaded brazed-in steel insert. Mounts with tapped hole or a flat on the outside diameter for set screw mounting.

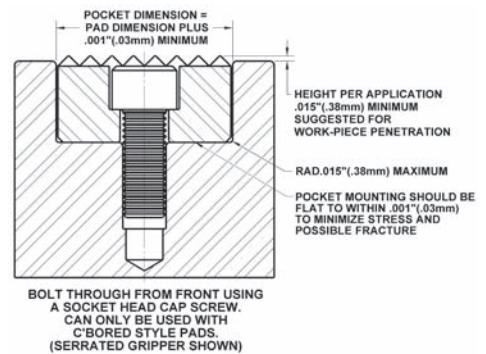
**GRIPPER PAD AND REST PAD MOUNTING APPLICATIONS AND SPECIFICATIONS**

Below are some of the more common mounting applications for fixed grippers, rest pads and carbide pads shown in this catalog.

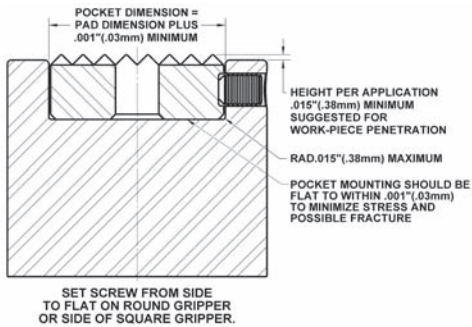
**Round or square grippers and rest pads with tapped blind-hole or through hole tap.**



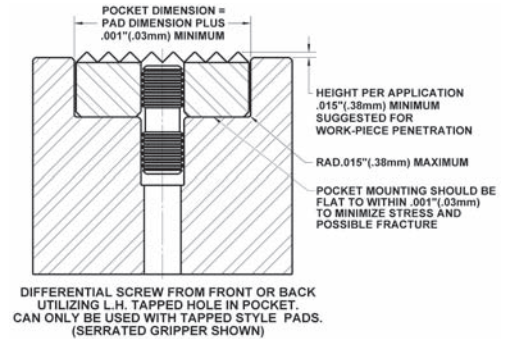
**Round or square grippers and rest pads with counter-bored hole.**



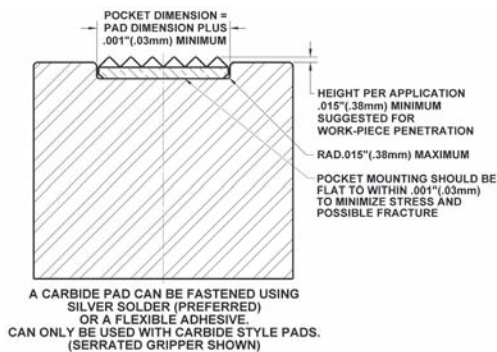
**Round grippers with flat on the O.D. for set screw mounting, or square gripper.**



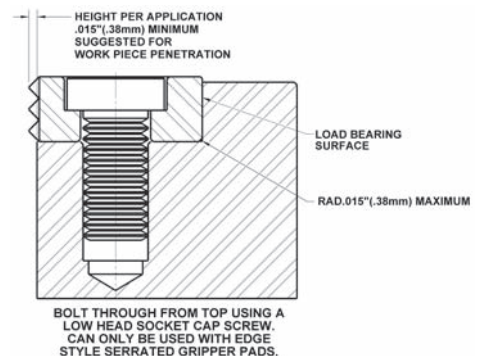
**Round or square grippers with through tapped hole.**



**Round or square carbide pads.**

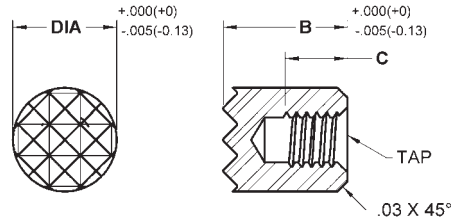
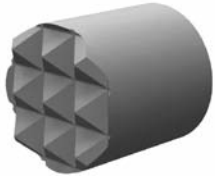


**Counter-bored edge grippers.**



## FIXED GRIPPERS

### Round Style | Tool Steel | Serrated | Tapped Hole | Inch & Metric



Made from M-2 high speed steel. Hardened to Rc 60/62 with black oxide finish. Serrated for positive holding in tough applications. Blind-hole tap for back side mounting. See page 90 for tooth pattern specifications. See page 91 for mounting specifications.

#### INCH

Part #	B Height	C Tap Depth	Tooth Pattern
<b>1/4" Dia - #8-32 Tap</b>			
HS-20	3/8	3/16	EF
HS-20-SF	3/8	3/16	SF
HS-205	1/2	5/16	EF
HS-205-SF	1/2	5/16	SF
<b>5/16" Dia - #8-32 Tap</b>			
HS-30	3/8	3/16	EF
HS-30-SF	3/8	3/16	SF
HS-305	1/2	5/16	EF
HS-305-SF	1/2	5/16	SF

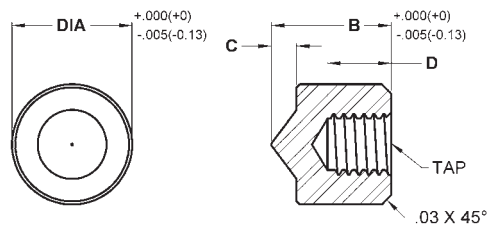
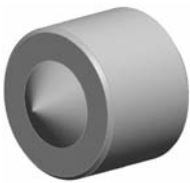
Part #	B Height	C Tap Depth	Tooth Pattern
<b>3/8" Dia - #10-32 Tap</b>			
HS-40-BL	3/8	3/16	EF
HS-40-BL-SF	3/8	3/16	SF
HS-405-BL	1/2	5/16	EF
HS-405-BL-SF	1/2	5/16	SF
<b>1/2" Dia - #10-32 Tap</b>			
HS-50-BL	3/8	3/16	Fine
HS-50-BL-EF	3/8	3/16	EF
HS-50-BL-SF	3/8	3/16	SF
HS-53-BL	1/2	5/16	Fine
HS-53-BL-EF	1/2	5/16	EF
HS-53-BL-SF	1/2	5/16	SF

#### METRIC

Part #	B Height	C Tap Depth	Tooth Pattern
<b>6mm Dia - M3x0.5 Tap</b>			
MHS-060-SF	10	5	SF
MHS-062-SF	12	7	SF

Part #	B Height	C Tap Depth	Tooth Pattern
<b>8mm Dia - M4x0.7 Tap</b>			
MHS-080-SF	10	5	SF
MHS-082-SF	12	7	SF

### Round Style | Tool Steel | Single Point | Tapped Hole | Inch



Made from M-2 high speed steel. Hardened to Rc 60/62 with black oxide finish. Single point contact allows for reduced force yet deeper penetration. Blind-hole tap for back side mounting. See page 91 for mounting specifications.

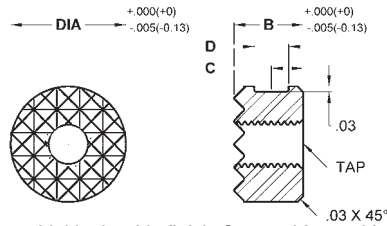
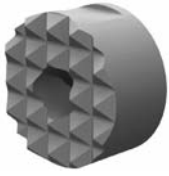
#### INCH

Part #	B Height	C Stand Off	D Tap Depth
<b>1/4" Dia - #8-32 Tap</b>			
HS-20-1	3/8	5/64	1/8
HS-205-1	1/2	5/64	1/4
<b>5/16" Dia - #8-32 Tap</b>			
HS-30-1	3/8	5/64	1/8
HS-305-1	1/2	5/64	1/4

Part #	B Height	C Stand Off	D Tap Depth
<b>3/8" Dia - #10-32 Tap</b>			
HS-40-1	3/8	5/64	1/8
HS-405-1	1/2	5/64	1/4
<b>1/2" Dia - #10-32 Tap</b>			
HS-50-1	3/8	5/64	1/8
HS-53-1	1/2	5/64	1/4

# FIXED GRIPPERS

## Round Style | Tool Steel | Serrated | Tapped Hole | Inch & Metric



Made from M-2 high speed steel. Hardened to Rc 60/62 with black oxide finish. Serrated for positive holding in tough applications. Thru-hole tap. Flat on O.D. for set screw mounting. See page 90 for tooth pattern specifications. See page 91 for mounting specifications.

### INCH

Part #	B Height	C Flat Pos.	D Flat Width	Tooth Pattern
<b>3/8" Dia - #10-32 Tap</b>				
HS-40	3/8	11/64	3/16	EF
HS-40-SF	3/8	11/64	3/16	SF
HS-405	1/2	15/64	3/16	EF
HS-405-SF	1/2	15/64	3/16	SF
<b>1/2" Dia - #10-32 Tap</b>				
HS-50	3/8	11/64	3/16	Fine
HS-50-EF	3/8	11/64	3/16	EF
HS-50-SF	3/8	11/64	3/16	SF
HS-51	1/2	15/64	3/16	Coarse
HS-52*	1/2	Keyway	-	Fine
HS-52-EF*	1/2	Keyway	-	EF
HS-53	1/2	15/64	3/16	Fine
HS-53-EF	1/2	15/64	3/16	EF
HS-53-SF	1/2	15/64	3/16	SF
HS-54	.651	19/64	3/16	Fine
HS-54-EF	.651	19/64	3/16	EF

\*Keyway = .130" width, .060" depth

Part #	B Height	C Flat Pos.	D Flat Width	Tooth Pattern
<b>5/8" Dia - 1/4-28 Tap</b>				
HS-62	3/8	11/64	3/16	Fine
HS-62-EF	3/8	11/64	3/16	EF
HS-63	3/8	11/64	3/16	Coarse
HS-625	1/2	15/64	3/16	Fine
HS-625-EF	1/2	15/64	3/16	EF
HS-635	1/2	15/64	3/16	Coarse
<b>3/4" Dia - 1/4-28 Tap</b>				
HS-75	3/8	11/64	3/16	Fine
HS-75-EF	3/8	11/64	3/16	EF
HS-76	3/8	11/64	3/16	Coarse
HS-755	1/2	15/64	3/16	Fine
HS-755-EF	1/2	15/64	3/16	EF
HS-765	1/2	15/64	3/16	Coarse
<b>1" Dia - 1/4-28 Tap</b>				
HS-81	3/8	11/64	3/16	Coarse
HS-82	3/8	11/64	3/16	Fine
HS-82-EF	3/8	11/64	3/16	EF
HS-815	1/2	15/64	3/16	Coarse
HS-825	1/2	15/64	3/16	Fine
HS-825-EF	1/2	15/64	3/16	EF

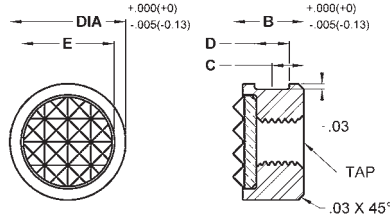
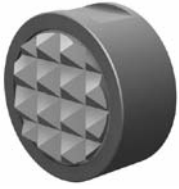
### METRIC

Part #	B Height	C Flat Pos.	D Flat Width	Tooth Pattern
<b>10mm Dia - M5x0.8 Tap</b>				
MHS-100	10	4.5	4.75	EF
MHS-102	12	6	4.75	EF
<b>12mm Dia - M5x0.8 Tap</b>				
MHS-120	10	4.5	4.75	Fine
MHS-122	12	6	4.75	Fine
<b>16mm Dia - M6x1.0 Tap</b>				
MHS-160	10	4.5	4.75	Fine
MHS-162	12	6	4.75	Fine

Part #	B Height	C Flat Pos.	D Flat Width	Tooth Pattern
<b>20mm Dia - M6x1.0 Tap</b>				
MHS-200	10	4.5	4.75	Fine
MHS-202	12	6	4.75	Fine
<b>25mm Dia - M6x1.0 Tap</b>				
MHS-250	10	4.5	4.75	Fine
MHS-252	12	6	4.75	Fine

## FIXED GRIPPERS

### Round Style | Carbide Tipped | Serrated | Tapped Hole | Inch & Metric



Constructed with a serrated carbide gripper pad brazed to a heat treated alloy steel body. Blind-hole tap for back side mounting. Flat on O.D. for set screw mounting. See page 90 for tooth pattern specifications. See page 91 for mounting specifications.

#### INCH

Part #	B Height	C Flat Pos.	D Flat Width	E Pad Dia.	Tooth Pattern
<b>3/8" Dia - #10-32 Tap</b>					
CT-830	3/8	11/64	3/16	5/16	EF
CT-830-4	3/8	11/64	3/16	5/16	4 Point
CT-835	1/2	15/64	3/16	5/16	EF
CT-835-4	1/2	15/64	3/16	5/16	4 Point
<b>1/2" Dia - #10-32 Tap</b>					
CT-840	1/2	15/64	3/16	3/8	Fine
CT-840-EF	1/2	15/64	3/16	3/8	EF
CT-840-4	1/2	15/64	3/16	3/8	4 Point
CT-841	3/8	11/64	3/16	3/8	Fine
CT-841-EF	3/8	11/64	3/16	3/8	EF
CT-841-4	3/8	11/64	3/16	3/8	4 Point
CT-842	.651	19/64	3/16	3/8	Fine
CT-842-EF	.651	19/64	3/16	3/8	EF
CT-842-4	.651	19/64	3/16	3/8	4 Point
CT-844*	1/2	Keyway	-	3/8	Fine
CT-844-EF*	1/2	Keyway	-	3/8	EF
CT-844-4*	1/2	Keyway	-	3/8	4 Point
<b>5/8" Dia - 1/4-28 Tap</b>					
CT-850	3/8	11/64	3/16	1/2	Fine
CT-850-EF	3/8	11/64	3/16	1/2	EF
CT-855	1/2	15/64	3/16	1/2	Fine
CT-855-EF	1/2	15/64	3/16	1/2	EF
CT-071*	5/8	Keyway	-	1/2	Fine
CT-071-EF*	5/8	Keyway	-	1/2	EF
CT-071-4*	5/8	Keyway	-	1/2	4 Point
<b>3/4" Dia - 1/4-28 Tap</b>					
CT-860	3/8	11/64	3/16	5/8	Fine
CT-860-EF	3/8	11/64	3/16	5/8	EF
CT-862	1/2	15/64	3/16	5/8	Fine
CT-862-EF	1/2	15/64	3/16	5/8	EF
<b>1" Dia - 1/4-28 Tap</b>					
CT-865	3/8	11/64	3/16	3/4	Fine
CT-865-EF	3/8	11/64	3/16	3/4	EF

\*Keyway= .130" width, .060" depth

#### METRIC

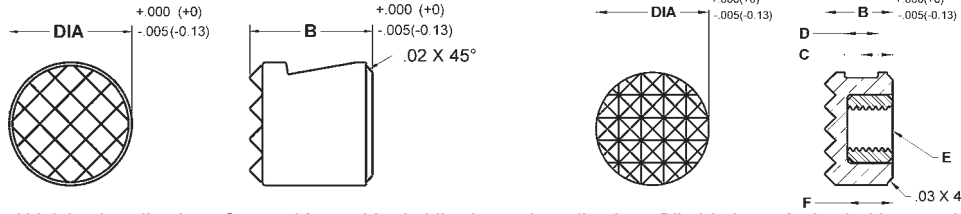
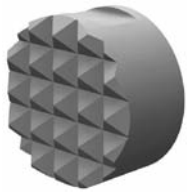
Part #	B Height	C Flat Pos.	D Flat Width	E Pad Dia.	Tooth Pattern
<b>10mm Dia - M5x0.8 Tap</b>					
MCT-100	10	4.5	4.75	5/16	EF
MCT-102	12	6.0	4.75	5/16	EF
<b>12mm Dia - M5x0.8 Tap</b>					
MCT-120	10	4.5	4.75	3/8	Fine
MCT-122	12	6.0	4.75	3/8	Fine
<b>16mm Dia - M6x1.0 Tap</b>					
MCT-160	10	4.5	4.75	1/2	Fine
MCT-162	12	6.0	4.75	1/2	Fine
<b>20mm Dia - M6x1.0 Tap</b>					
MCT-200	10	4.5	4.75	5/8	Fine
MCT-202	12	6.0	4.75	5/8	Fine
<b>25mm Dia - M6x1.0 Tap</b>					
MCT-250	10	4.5	4.75	3/4	Fine
MCT-252	12	6.0	4.75	3/4	Fine

#### INCH DIAMETERS WITH METRIC THREADS

Part #	B Height	C Flat Pos.	D Flat Width	E Pad Dia.	Tooth Pattern
<b>1/2" Dia - M6x1.0 Tap</b>					
MCT-840-EF	1/2	15/64	3/16	3/8	EF
MCT-841-EF	3/8	11/64	3/16	3/8	EF
MCT-842-EF	.651	19/64	3/16	3/8	EF
<b>5/8" Dia - M6x1.0 Tap</b>					
MCT-850-EF	3/8	11/64	3/16	1/2	EF
<b>3/4" Dia - M6x1.0 Tap</b>					
MCT-860-EF	3/8	11/64	3/16	5/8	EF

**FIXED GRIPPERS**

**Round Style | Solid Carbide | Serrated | Tapped Hole | Inch**



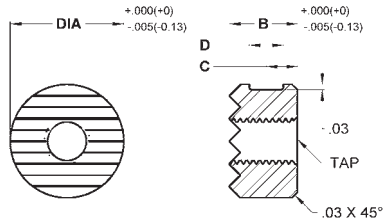
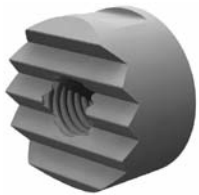
Made from solid carbide for high wear and high load applications. Serrated for positive holding in tough applications. Blind-hole tap for back side mounting. Flat on O.D. for set screw mounting. See page 90 for tooth pattern specifications. See page 91 for mounting specifications.

**INCH**

Part#	B Height	C Flat Pos.	D Flat Width	E Thread Size	F Tap Depth	Tooth Pattern
<b>1/4" Dia</b>						
FSC-20-SF-SL	3/8	—	—	—	—	SF
FSC-20-4-SL	3/8	—	—	—	—	4 Point
<b>5/16" Dia</b>						
FSC-30-SL	3/8	—	—	—	—	EF
FSC-30-4-SL	3/8	—	—	—	—	4 Point
<b>3/8" Dia</b>						
FSC-40-SL	3/8	—	—	—	—	EF
FSC-40-4-SL	3/8	—	—	—	—	4 Point

Part#	B Height	C Flat Pos.	D Flat Width	E Thread Size	F Tap Depth	Tooth Pattern
<b>1/2" Dia</b>						
FSC-841	3/8	11/64	3/16	#10-32	3/16	Fine
FSC-844-4	1/2	15/64	3/16	#10-32	5/16	4 Point
FSC-844	1/2	15/64	3/16	#10-32	5/16	Fine
FSC-844-SL	1/2	15/64	3/16	—	—	Fine
FSC-070-4	1/2	—	Keyway	#10-32	5/16	4 Point
FSC-070	1/2	—	Keyway	#10-32	5/16	Fine
<b>5/8" Dia</b>						
FSC-850	3/8	11/64	3/16	1/4-28	3/16	Fine
<b>3/4" Dia</b>						
FSC-860	3/8	11/64	3/16	1/4-28	3/16	Fine

**Round Style | Tool Steel | Straight Serrations | Tapped Hole | Inch**



Made from M-2 high speed steel. Hardened to Rc 60/62 with black oxide finish. Serrated for positive holding in tough applications. Thru-hole tap. Flat on O.D. for set screw mounting. See page 90 for tooth pattern specifications. See page 91 for mounting specifications.

**INCH**

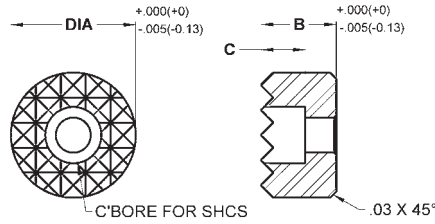
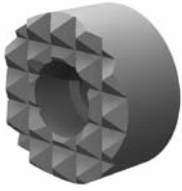
Part#	B Height	C Flat Pos.	D Flat Width	Tooth Pattern
<b>3/8" Dia - #10-32 Tap</b>				
HS-40-SS	3/8	11/64	3/16	EF
HS-40-SS-SF	3/8	11/64	3/16	SF
HS-405-SS	1/2	15/64	3/16	EF
HS-405-SS-SF	1/2	15/64	3/16	SF
<b>1/2" Dia - #10-32 Tap</b>				
HS-50-SS	3/8	11/64	3/16	Fine
HS-50-SS-EF	3/8	11/64	3/16	EF
HS-50-SS-SF	3/8	11/64	3/16	SF
HS-51-SS	1/2	15/64	3/16	Coarse
HS-53-SS	1/2	15/64	3/16	Fine
HS-53-SS-EF	1/2	15/64	3/16	EF
HS-53-SS-SF	1/2	15/64	3/16	SF
<b>5/8" Dia - 1/4-28 Tap</b>				
HS-62-SS	3/8	11/64	3/16	Fine
HS-62-SS-EF	3/8	11/64	3/16	EF
HS-63-SS	3/8	11/64	3/16	Coarse
HS-625-SS	1/2	15/64	3/16	Fine
HS-625-SS-EF	1/2	15/64	3/16	EF
HS-635-SS	1/2	15/64	3/16	Coarse

Part#	B Height	C Flat Pos.	D Flat Width	Tooth Pattern
<b>3/4" Dia - 1/4-28 Tap</b>				
HS-75-SS	3/8	11/64	3/16	Fine
HS-75-SS-EF	3/8	11/64	3/16	EF
HS-76-SS	3/8	11/64	3/16	Coarse
HS-755-SS	1/2	15/64	3/16	Fine
HS-755-SS-EF	1/2	15/64	3/16	EF
HS-765-SS	1/2	15/64	3/16	Coarse
<b>1" Dia - 1/4-28 Tap</b>				
HS-81-SS	3/8	11/64	3/16	Coarse
HS-82-SS	3/8	11/64	3/16	Fine
HS-82-SS-EF	3/8	11/64	3/16	EF
HS-815-SS	1/2	15/64	3/16	Coarse
HS-825-SS	1/2	15/64	3/16	Fine
HS-825-SS-EF	1/2	15/64	3/16	EF



## FIXED GRIPPERS

### Round Style | Tool Steel | Serrated | Counter Bored Hole | Inch & Metric

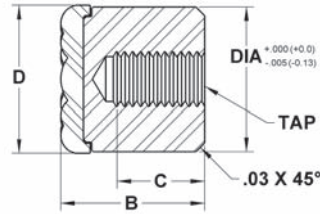
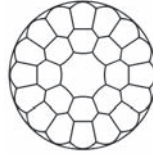


Made from M-2 high speed steel. Hardened to Rc 60/62 with black oxide finish. Serrated for positive holding in tough applications. Counter bored hole for front mounting with a socket head cap screw. See page 90 for tooth pattern specifications. See page 91 for mounting specifications.

INCH				METRIC			
Part #	B Height	C C'Bore Depth	Tooth Pattern	Part #	B Height	C C'Bore Depth	Tooth Pattern
<b>1/2" Dia - Counter Bored for #8 SHCS</b>				<b>12mm Dia - Counter Bored for M4 SHCS</b>			
HS-50-C	3/8	7/32	Fine	MHS-120-C	10	5.6	Fine
HS-50-C-EF	3/8	7/32	EF	MHS-122-C	12	5.6	Fine
HS-50-C-SF	3/8	7/32	SF	<b>16mm Dia - Counter Bored for M4 SHCS</b>			
HS-53-C	1/2	7/32	Fine	MHS-160-C	10	5.6	Fine
HS-53-C-EF	1/2	7/32	EF	MHS-162-C	12	5.6	Fine
HS-53-C-SF	1/2	7/32	SF	<b>20mm Dia - Counter Bored for M5 SHCS</b>			
<b>5/8" Dia - Counter Bored for #8 SHCS</b>				MHS-200-C	10	6.6	Fine
HS-62-C	3/8	7/32	Fine	MHS-202-C	12	6.6	Fine
HS-62-C-EF	3/8	7/32	EF	<b>25mm Dia - Counter Bored for M6 SHCS</b>			
HS-625-C	1/2	7/32	Fine	MHS-250-C	10	7.6	Fine
HS-625-C-EF	1/2	7/32	EF	MHS-252-C	12	7.6	Fine
<b>3/4" Dia - Counter Bored for #10 SHCS</b>							
HS-75-C	3/8	1/4	Fine				
HS-75-C-EF	3/8	1/4	EF				
HS-755-C	1/2	1/4	Fine				
HS-755-C-EF	1/2	1/4	EF				
HS-76-C	3/8	1/4	Coarse				
HS-765-C	1/2	5/16	Coarse				
<b>1" Dia - Counter Bored for 1/4" SHCS</b>							
HS-81-C	1/2	5/16	Coarse				
HS-82-C	1/2	5/16	Fine				
HS-82-C-EF	1/2	5/16	EF				

# FIXED GRIPPERS

## Round Style | Stainless Steel | Sof-Top Urethane Surface | Tapped | Inch & Metric



The urethane surface is permanently bonded to a 300 series stainless steel pad. The non-marking, non-staining urethane provides excellent protection against damage on delicate work surfaces. The "bubbled" texture of the urethane top offers firm holding and allows air to escape so no suction is created between the contact surface and the top of the rest pad as it is compressed. Because the top is made of urethane it offers superior abrasion and wear resistance. They are available in three durometers to meet a wide variety of application needs. Blind-hole tap for back side mounting. See page 91 for mounting specifications.

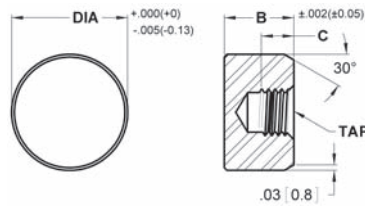
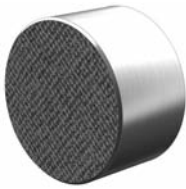
INCH				
Part #	B Height	C Tap Depth	D Contact Dia.	Durometer
<b>5/16" Dia - #8-32 Tap</b>				
CSRP-305-35UR	1/2	1/4	.315	35
CSRP-305-60UR	1/2	1/4	.315	60
CSRP-305-80UR	1/2	1/4	.315	80
<b>3/8" Dia - #10-32 Tap</b>				
CSRP-405-35UR	1/2	1/4	.394	35
CSRP-405-60UR	1/2	1/4	.394	60
CSRP-405-80UR	1/2	1/4	.394	80
<b>1/2" Dia - #10-32 Tap</b>				
CSRP-53-35UR	1/2	1/4	.512	35
CSRP-53-60UR	1/2	1/4	.512	60
CSRP-53-80UR	1/2	1/4	.512	80
<b>5/8" Dia - 1/4-28 Tap</b>				
CSRP-625-35UR	1/2	3/8	.630	35
CSRP-625-60UR	1/2	3/8	.630	60
CSRP-625-80UR	1/2	3/8	.630	80
<b>3/4" Dia - 1/4-28 Tap</b>				
CSRP-755-35UR	1/2	3/8	.827	35
CSRP-755-60UR	1/2	3/8	.827	60
CSRP-755-80UR	1/2	3/8	.827	80
<b>1" Dia - 1/4-28 Tap</b>				
CSRP-815-35UR	1/2	3/8	1.063	35
CSRP-815-60UR	1/2	3/8	1.063	60
CSRP-815-80UR	1/2	3/8	1.063	80

METRIC				
Part #	B Height	C Tap Depth	D Contact Dia.	Durometer
<b>8mm Dia - M4x0.7 Tap</b>				
MCSR-082-35UR	12	6	8	35
MCSR-082-60UR	12	6	8	60
MCSR-082-80UR	12	6	8	80
<b>10mm Dia - M5x0.8 Tap</b>				
MCSR-102-35UR	12	6	10	35
MCSR-102-60UR	12	6	10	60
MCSR-102-80UR	12	6	10	80
<b>12mm Dia - M5x0.8 Tap</b>				
MCSR-122-35UR	12	6	13	35
MCSR-122-60UR	12	6	13	60
MCSR-122-80UR	12	6	13	80
<b>16mm Dia - M6x1.0 Tap</b>				
MCSR-162-35UR	12	9.5	16	35
MCSR-162-60UR	12	9.5	16	60
MCSR-162-80UR	12	9.5	16	80
<b>20mm Dia - M6x1.0 Tap</b>				
MCSR-202-35UR	12	9.5	21	35
MCSR-202-60UR	12	9.5	21	60
MCSR-202-80UR	12	9.5	21	80
<b>25mm Dia - M6x1.0 Tap</b>				
MCSR-252-35UR	12	9.5	27	35
MCSR-252-60UR	12	9.5	27	60
MCSR-252-80UR	12	9.5	27	80



## FIXED GRIPPERS

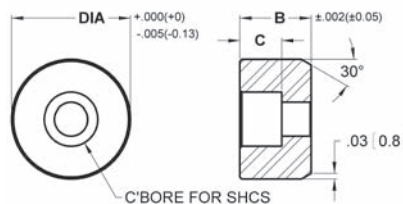
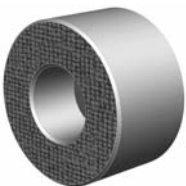
### Round Style | Stainless Steel | Abrasive Diamond Surface | Tapped | Inch & Metric



The abrasive surface is permanently fused to a stainless steel pad. The surface texture is comparable to a 100 grit abrasive. They are ideal for holding smooth or slippery applications with a minimum of clamping pressure. Individual diamond particles transfer holding pressure to a very small and well distributed area, providing superior holding with minimal surface marking. The diamond surface also provides unparalleled wear resistance. The pad is made from 17-4 stainless steel which provides high strength as well as protection against chemical and environmental corrosion. Heat treated to Rc 43/46. Blind-hole tap for back side mounting. See page 91 for mounting specifications.

INCH			METRIC		
Part #	B Height	C Tap Depth	Part #	B Height	C Tap Depth
<b>5/16" Dia - #8-32 Tap</b>			<b>5/8" Dia - 1/4-28 Tap</b>		
CSRP-30-DS	3/8	3/16	CSRP-62-DS	3/8	3/16
CSRP-305-DS	1/2	5/16	CSRP-625-DS	1/2	5/16
<b>3/8" Dia - #10-32 Tap</b>			<b>3/4" Dia - 1/4-28 Tap</b>		
CSRP-40-DS	3/8	3/16	CSRP-75-DS	3/8	3/16
CSRP-405-DS	1/2	5/16	CSRP-755-DS	1/2	5/16
<b>1/2" Dia - #10-32 Tap</b>			<b>1" Dia - 1/4-28 Tap</b>		
CSRP-50-DS	3/8	3/16	CSRP-81-DS	3/8	3/16
CSRP-53-DS	1/2	5/16	CSRP-815-DS	1/2	5/16
			<b>8mm Dia - M4x0.7 Tap</b>		
			MCSR-080-DS	10	5
			MCSR-082-DS	12	6.4
			<b>10mm Dia - M5x0.8 Tap</b>		
			MCSR-100-DS	10	5
			MCSR-102-DS	12	6.4
			<b>12mm Dia - M5x0.8 Tap</b>		
			MCSR-120-DS	10	5
			MCSR-122-DS	12	6.4
			<b>16mm Dia - M6x1.0 Tap</b>		
			MCSR-160-DS	10	5
			MCSR-162-DS	12	6.4
			<b>20mm Dia - M6x1.0 Tap</b>		
			MCSR-200-DS	10	5
			MCSR-202-DS	12	6.4
			<b>25mm Dia - M6x1.0 Tap</b>		
			MCSR-250-DS	10	5
			MCSR-252-DS	12	6.4

### Round Style | Stainless Steel | Abrasive Diamond Surface | Counter Bored | Inch & Metric



The abrasive surface is permanently fused to a stainless steel pad. The surface texture is comparable to a 100 grit abrasive. They are ideal for holding smooth or slippery applications with a minimum of clamping pressure. Individual diamond particles transfer holding pressure to a very small and well distributed area, providing superior holding with minimal surface marking. The diamond surface also provides unparalleled wear resistance. The pad is made from 17-4 stainless steel which provides high strength as well as protection against chemical and environmental corrosion. Heat treated to Rc 43/46. Counter bored hole for front mounting with a socket head cap screw. See page 91 for mounting specifications.

INCH			METRIC		
Part #	B Height	C C'Bore Depth	Part #	B Height	C C'Bore Depth
<b>3/8" Dia - Counter Bored for #6 SHCS</b>			<b>3/4" Dia - Counter Bored for #10 SHCS</b>		
CSRP-40-C-DS	3/8	3/16	CSRP-75-C-DS	3/8	1/4
CSRP-405-C-DS	1/2	3/16	CSRP-755-C-DS	1/2	1/4
<b>1/2" Dia - Counter Bored for #8 SHCS</b>			<b>1" Dia - Counter Bored for 1/4" SHCS</b>		
CSRP-50-C-DS	3/8	7/32	CSRP-81-C-DS	3/8	9/32
CSRP-53-C-DS	1/2	7/32	CSRP-815-C-DS	1/2	9/32
<b>5/8" Dia - Counter Bored for #8 SHCS</b>					
CSRP-62-C-DS	3/8	7/32			
CSRP-625-C-DS	1/2	7/32			
			<b>10mm Dia - Counter Bored for M3 SHCS</b>		
			MCSR-100-C-DS	10	4
			MCSR-102-C-DS	12	4
			<b>12mm Dia - Counter Bored for M4 SHCS</b>		
			MCSR-120-C-DS	10	5.6
			MCSR-122-C-DS	12	5.6
			<b>16mm Dia - Counter Bored for M5 SHCS</b>		
			MCSR-160-C-DS	10	6.6
			MCSR-162-C-DS	12	6.6
			<b>20mm Dia - Counter Bored for M6 SHCS</b>		
			MCSR-200-C-DS	10	7.6
			MCSR-202-C-DS	12	7.6
			<b>25mm Dia - Counter Bored for M6 SHCS</b>		
			MCSR-250-C-DS	10	7.6
			MCSR-252-C-DS	12	7.6