

REPLACEABLE PAD OVERVIEW

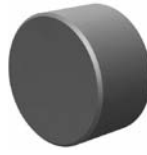
Rest Pads & Gripper Pads



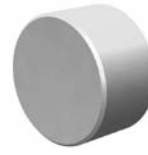
Solid Carbide
High impact carbide pads. Can be brazed or bonded into place.



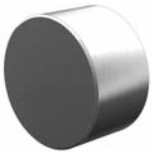
Carbide Tipped
Constructed with a high impact carbide pad brazed to a heat treated alloy steel body. Mounts with tapped hole or a flat on the outside diameter for set screw mounting.



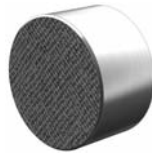
Hardened Steel
Made from 8620 steel, carburized and hardened to Rc 58/60 .050" case with black oxide finish. Mounts with tapped hole or counter bored hole.



Non-Marring Delrin
Manufactured from white Delrin. Mounts with counter bored or tapped hole.



Stainless Steel
The pad is made from 17-4 stainless steel, hardened to Rc 43/46. Mounts with tapped or counter bored hole.



Abrasive Diamond Surface
The abrasive surface is permanently fused to a 17-4 stainless steel pad, hardened to Rc 43/46. The surface texture is comparable to a 100 grit abrasive. Mounts with tapped or counter bored hole.

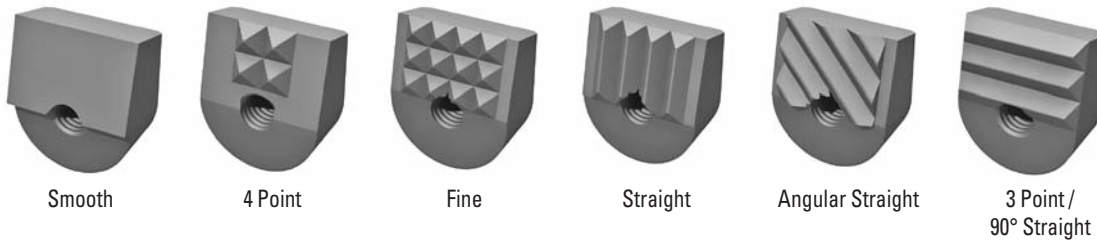


Sof-Top™ Urethane Surface
The urethane surface is permanently bonded to a 300 series stainless steel pad. The urethane provides excellent protection against damage on delicate work surfaces. They are available in three durometers. Tapped hole mounting.

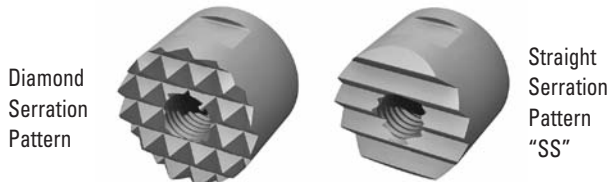
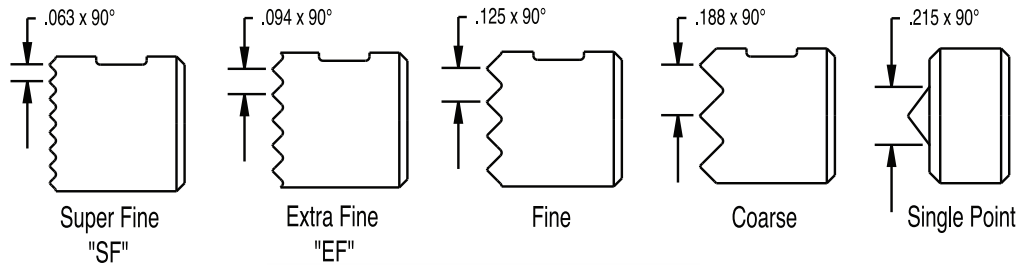
TOOTH PATTERN SPECIFICATIONS

Throughout this catalog, you will find reference to tooth patterns on all serrated grippers. Please use the chart below for specific information regarding these tooth patterns. If additional information is required, please contact us.

Angle Grippers

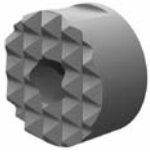


Round and Square Grippers



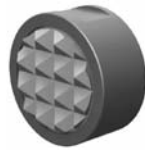
REPLACEABLE PAD OVERVIEW

Serrated Gripper Pads



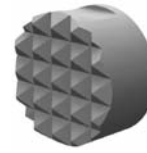
High Speed Tool Steel

Round, square, edge, and angle grippers manufactured from M-2 high speed tool steel, hardened to Rc 60/62 with black oxide finish. Mounts with tapped hole, counter bored hole or a flat on the outside diameter for set screw mounting.



Carbide Tipped

Round, square, and angle grippers constructed with a high impact carbide pad brazed to a heat treated alloy steel body. Mounts with tapped hole or a flat on the outside diameter for set screw mounting.



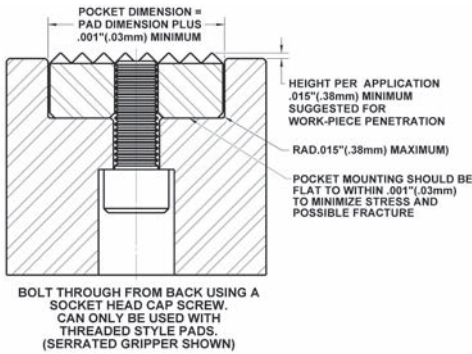
Solid Carbide

Round and square grippers manufactured from high impact carbide in a solid gripper pad or as a solid gripper body with a threaded brazed-in steel insert. Mounts with tapped hole or a flat on the outside diameter for set screw mounting.

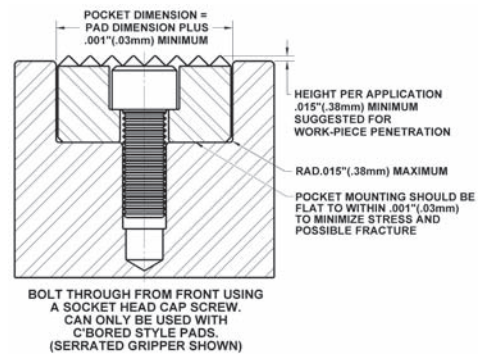
GRIPPER PAD AND REST PAD MOUNTING APPLICATIONS AND SPECIFICATIONS

Below are some of the more common mounting applications for fixed grippers, rest pads and carbide pads shown in this catalog.

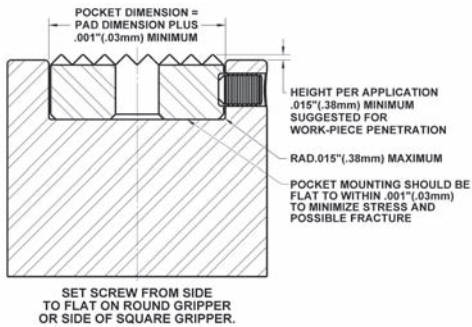
Round or square grippers and rest pads with tapped blind-hole or through hole tap.



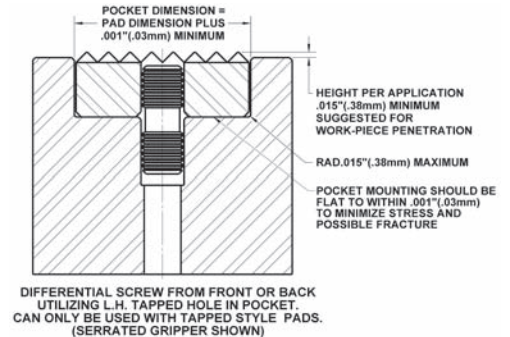
Round or square grippers and rest pads with counter-bored hole.



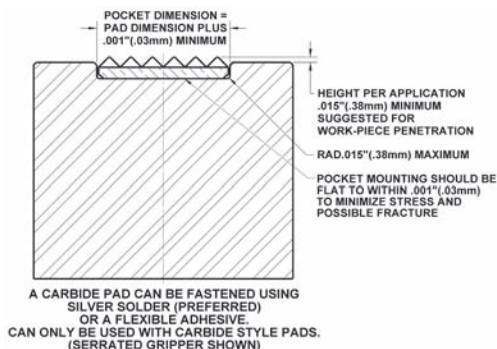
Round grippers with flat on the O.D. for set screw mounting, or square gripper.



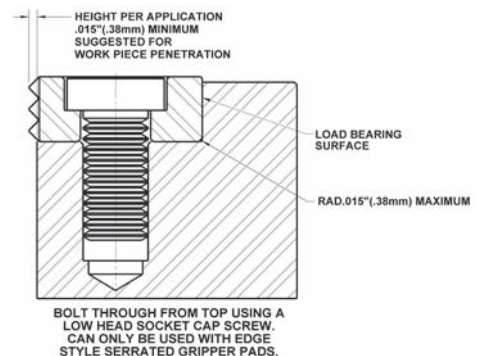
Round or square grippers with through tapped hole.



Round or square carbide pads.

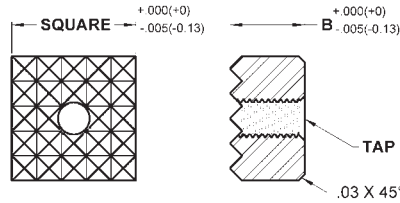
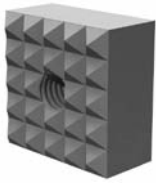


Counter-bored edge grippers.



FIXED GRIPPERS

Square Style | Tool Steel | Serrated | Tapped Hole | Inch & Metric



Made from M-2 high speed steel. Hardened to Rc 60/62 with black oxide finish. Serrated for positive holding in tough applications. Thru-hole tap. See page 90 for tooth pattern specifications. See page 91 for mounting specifications.

INCH

Part #	B Height	Tooth Pattern
3/8" Square - #10-32 Tap		
HS-90	3/8	EF
HS-90-SF	3/8	SF
HS-905	1/2	EF
HS-905-SF	1/2	SF
1/2" Square - #10-32 Tap		
HS-95	3/8	Fine
HS-95-EF	3/8	EF
HS-95-SF	3/8	SF
HS-955	1/2	Fine
HS-955-EF	1/2	EF
HS-955-SF	1/2	SF
HS-96	3/8	Coarse
HS-965	1/2	Coarse

Part #	B Height	Tooth Pattern
5/8" Square - #10-32 Tap		
HS-962	3/8	Fine
HS-962-EF	3/8	EF
HS-963	3/8	Coarse
HS-9625	1/2	Fine
HS-9625-EF	1/2	EF
HS-9635	1/2	Coarse
3/4" Square - #10-32 Tap		
HS-97	3/8	Fine
HS-97-EF	3/8	EF
HS-98	3/8	Coarse
HS-975	1/2	Fine
HS-975-EF	1/2	EF
HS-985	1/2	Coarse

Part #	B Height	Tooth Pattern
1" Square - 1/4-28 Tap		
HS-101	3/8	Fine
HS-101-EF	3/8	EF
HS-102	3/8	Coarse
HS-105	1/2	Fine
HS-105-EF	1/2	EF
HS-106	1/2	Coarse

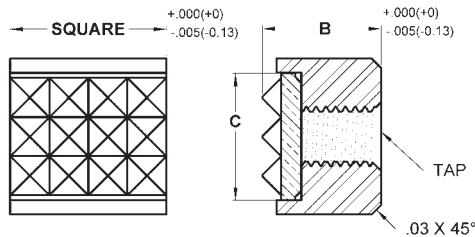
METRIC

Part #	B Height	Tooth Pattern
10mm Square - M5x0.8 Tap		
MHS-9100	10	EF
MHS-9102	12	EF
12mm Square - M5x0.8 Tap		
MHS-9120	10	Fine
MHS-9122	12	Fine

Part #	B Height	Tooth Pattern
16mm Square - M6x1.0 Tap		
MHS-9160	10	Fine
MHS-9162	12	Fine
20mm Square - M5x0.8 Tap		
MHS-9200	10	Fine
MHS-9202	12	Fine

Part #	B Height	Tooth Pattern
25mm Square - M6x1.0 Tap		
MHS-9250	10	Fine
MHS-9252	12	Fine

Square Style | Carbide Tipped | Serrated | Tapped Hole | Inch & Metric



Constructed with a serrated carbide gripper pad brazed to a heat treated alloy steel body. Blind-hole tap for back side mounting. See page 90 for tooth pattern specifications. See page 91 for mounting specifications.

INCH

Part #	B Height	C	Tooth Pattern
1/2" Square - #10-32 Tap			
CT-870	3/8	13/32	Fine
CT-870-EF	3/8	13/32	EF
CT-875	1/2	13/32	Fine
CT-875-EF	1/2	13/32	EF

INCH WITH METRIC THREADS

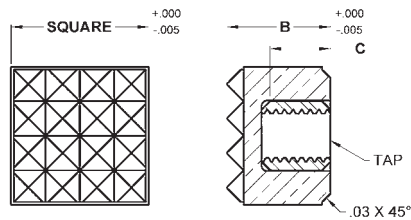
Part #	B Height	C	Tooth Pattern
1/2" Square - M6x1.0 Tap			
MCT-870-EF	3/8	13/32	EF

METRIC

Part #	B Height	C	Tooth Pattern
12mm Square - M5x0.8 Tap			
MCT-9120	10	13/32	Fine
MCT-9122	12	13/32	Fine

FIXED GRIPPERS

Square Style | Solid Carbide | Serrated | Tapped Hole | Inch

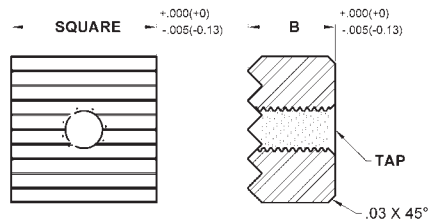
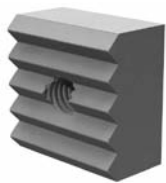


Made from solid carbide for high wear and high load applications. Serrated for positive holding in tough applications. Blind-hole tap for back side mounting. See page 90 for tooth pattern specifications. See page 91 for mounting specifications.

INCH

Part #	B Height	C Tap Depth	Tooth Pattern
1/2" Square - #10-32 Tap			
FSC-870	3/8	3/16	Fine
FSC-875	1/2	5/16	Fine

Square Style | Tool Steel | Straight Serrations | Tapped Hole | Inch



Made from M-2 high speed steel. Hardened to Rc 60/62 with black oxide finish. Serrated for positive holding in tough applications. Thru-hole tap. See page 90 for tooth pattern specifications. See page 91 for mounting specifications.

INCH

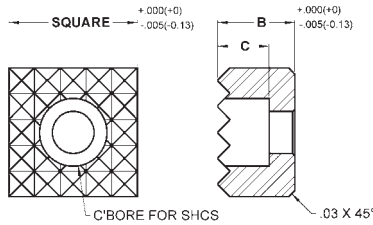
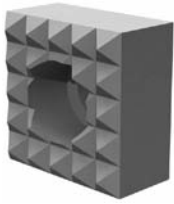
Part #	B Height	Tooth Pattern
3/8" Square - #10-32 Tap		
HS-90-SS	3/8	EF
HS-90-SS-SF	3/8	SF
HS-905-SS	1/2	EF
HS-905-SS-SF	1/2	SF
1/2" Square - #10-32 Tap		
HS-95-SS	3/8	Fine
HS-95-SS-EF	3/8	EF
HS-95-SS-SF	3/8	SF
HS-955-SS	1/2	Fine
HS-955-SS-EF	1/2	EF
HS-955-SS-SF	1/2	SF
HS-96-SS	3/8	Coarse
HS-965-SS	1/2	Coarse

Part #	B Height	Tooth Pattern
5/8" Square - #10-32 Tap		
HS-962-SS	3/8	Fine
HS-962-SS-EF	3/8	EF
HS-9625-SS	1/2	Fine
HS-9625-SS-EF	1/2	EF
HS-963-SS	3/8	Coarse
HS-9635-SS	1/2	Coarse
3/4" Square - #10-32 Tap		
HS-97-SS	3/8	Fine
HS-97-SS-EF	3/8	EF
HS-975-SS	1/2	Fine
HS-975-SS-EF	1/2	EF
HS-98-SS	3/8	Coarse
HS-985-SS	1/2	Coarse

Part #	B Height	Tooth Pattern
1" Square - 1/4-28 Tap		
HS-101-SS	3/8	Fine
HS-101-SS-EF	3/8	EF
HS-102-SS	3/8	Coarse
HS-105-SS	1/2	Fine
HS-105-SS-EF	1/2	EF
HS-106-SS	1/2	Coarse

FIXED GRIPPERS

Square Style | Tool Steel | Serrated | Counter Bored Hole | Inch & Metric

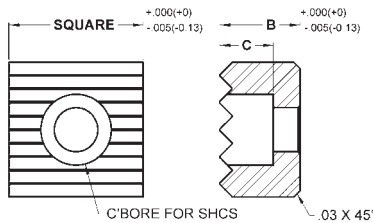
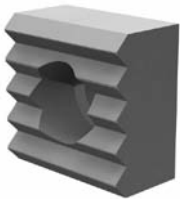


Made from M-2 high speed steel. Hardened to Rc 60/62 with black oxide finish. Serrated for positive holding in tough applications. Counter bored hole for front mounting with a socket head cap screw. See page 90 for tooth pattern specifications. See page 91 for mounting specifications.

INCH			
Part #	B Height	C C'Bore Depth	Tooth Pattern
1/2" Square - Counter Bored for #10 SHCS			
HS-92-C	3/8	1/4	Fine
HS-92-C-EF	3/8	1/4	EF
HS-92-C-SF	3/8	1/4	SF
HS-95-C	1/2	1/4	Fine
HS-95-C-EF	1/2	1/4	EF
HS-95-C-SF	1/2	1/4	SF
5/8" Square - Counter Bored for #10 SHCS			
HS-962-C	3/8	1/4	Fine
HS-962-C-EF	3/8	1/4	EF
HS-9625-C	1/2	1/4	Fine
HS-9625-C-EF	1/2	1/4	EF
HS-963-C	3/8	1/4	Coarse
HS-9635-C	1/2	1/4	Coarse
3/4" Square - Counter Bored for 1/4" SHCS			
HS-97-C	1/2	5/16	Fine
HS-97-C-EF	1/2	5/16	EF
HS-98-C	1/2	5/16	Coarse
1" Square - Counter Bored for 1/4" SHCS			
HS-101-C	1/2	5/16	Fine
HS-101-C-EF	1/2	5/16	EF
HS-102-C	1/2	5/16	Coarse

METRIC			
Part #	B Height	C C'Bore Depth	Tooth Pattern
12mm Square - Counter Bored for M4 SHCS			
MHS-9120-C	10	5.6	Fine
MHS-9122-C	12	5.6	Fine
16mm Square - Counter Bored for M4 SHCS			
MHS-9160-C	10	5.6	Fine
MHS-9162-C	12	5.6	Fine
20mm Square - Counter Bored for M5 SHCS			
MHS-9200-C	10	6.6	Fine
MHS-9202-C	12	6.6	Fine
25mm Square - Counter Bored for M6 SHCS			
MHS-9250-C	10	7.6	Fine
MHS-9252-C	12	7.6	Fine

Square Style | Tool Steel | Straight Serrations | Counter Bored Hole | Inch



Made from M-2 high speed steel. Hardened to Rc 60/62 with black oxide finish. Serrated for positive holding in tough applications. Counter bored hole for front mounting with a socket head cap screw. See page 90 for tooth pattern specifications. See page 91 for mounting specifications.

INCH			
Part #	B Height	C C'Bore Depth	Tooth Pattern
1/2" Square - Counter Bored for #10 SHCS			
HS-92-C-SS	3/8	1/4	Fine
HS-92-C-SS-EF	3/8	1/4	EF
HS-92-C-SS-SF	3/8	1/4	SF
HS-95-C-SS	1/2	1/4	Fine
HS-95-C-SS-EF	1/2	1/4	EF
HS-95-C-SS-SF	1/2	1/4	SF
5/8" Square - Counter Bored for #10 SHCS			
HS-962-C-SS	3/8	1/4	Fine
HS-962-C-SS-EF	3/8	1/4	EF
HS-9625-C-SS	1/2	1/4	Fine
HS-9625-C-SS-EF	1/2	1/4	EF
HS-963-C-SS	3/8	1/4	Coarse
HS-9635-C-SS	1/2	1/4	Coarse
3/4" Square - Counter Bored for 1/4" SHCS			
HS-97-C-SS	1/2	5/16	Fine
HS-97-C-SS-EF	1/2	5/16	EF
HS-98-C-SS	1/2	5/16	Coarse
1" Square - Counter Bored for 1/4" SHCS			
HS-101-C-SS	1/2	5/16	Fine
HS-101-C-SS-EF	1/2	5/16	EF
HS-102-C-SS	1/2	5/16	Coarse