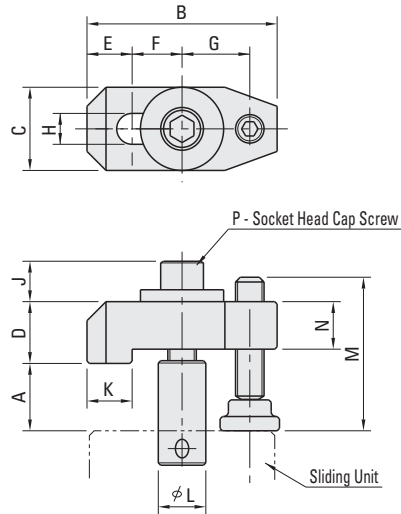
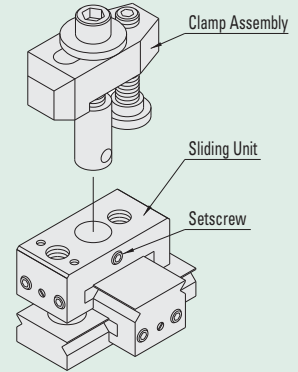


## CLAMP ASSEMBLIES



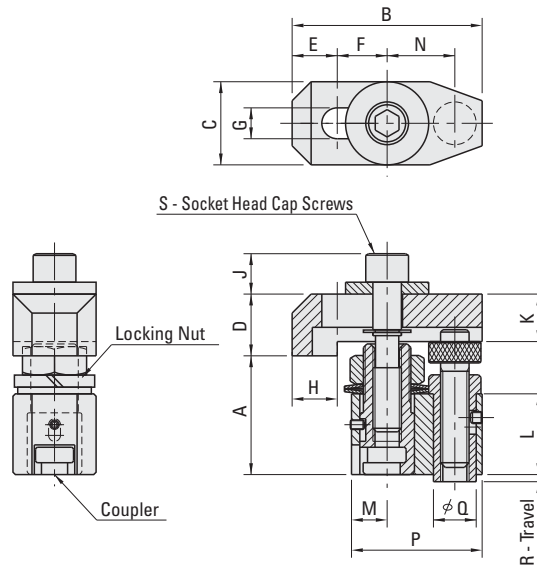
### How To Use



Designed for use with the sliding mount units shown on the previous page to allow the clamps to be adjusted and moved. Install by inserting the mounting base into the top sliding mount and tightening the set screw on the mount. The strap clamp is made from A7075 aluminum with natural anodized finish. The support and mount are made from SAE-1045 alloy steel, heat treated with black oxide finish.

Part #	A mm	B mm	C mm	D mm	E mm	F mm	G mm	H mm	J mm	K mm	L mm	M mm	N mm	P mm
FJ30-12023	23-50	80	35	26	19	21	28.5	13	17	19	20	65	20	M12X1.75X63
FJ30-16025	25-55	100	45	34	24	26	35.0	17	22	24	25	85	27	M16X2X80

## HIGH RISE CLAMP ASSEMBLIES



These high rise clamp assemblies are designed for use with the quick lock risers and screws shown on the following page. This system allows for quickly assembling clamps to fixture plates. These clamps quickly attach to the risers to obtain the necessary height for clamping of the work piece. The strap clamp is slotted to allow for horizontal adjustments. The base is made from A6061S-T6 aluminum and the strap is made from A7075 aluminum. The aluminum parts have a natural anodized finish. The support and mount are made from SAE-1045 alloy steel, heat treated with black oxide finish.

Part #	A mm	B mm	C mm	D mm	E mm	F mm	G mm	H mm	J mm	K mm	L mm	M mm	N mm	P mm	Q mm	R mm	S mm
FJ40-12050S	50-75	80	35	26	19	21	13	19	17	20	34.0	15	28.5	55	18	3	M12X1.75X63
FJ40-12050L	50-75	120	35	26	19	41	13	19	17	20	34.0	15	48.5	75	18	3	M12X1.75X63
FJ40-16055S	55-80	100	45	34	24	26	17	24	22	27	36.5	18	35.0	68	22	4	M16X2X75
FJ40-16055L	55-80	150	45	34	24	51	17	24	22	27	36.5	18	60.0	93	22	4	M16X2X75