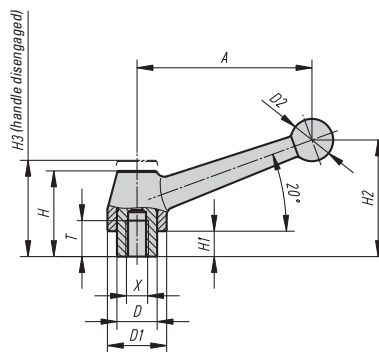


ADJUSTABLE CLAMP LEVERS

Steel and Stainless Steel | Female Threads | Inch and Metric



Pulling up on the handle disengages it from the spline and allows it to rotate freely for adjustment. Releasing the handle engages it for tightening or adjusting. The handles are made from steel or stainless steel. The steel handles have a silver-grey hammertone powder coat finish and the internal steel parts are black oxidized. The stainless handles are electro-polished and the internal parts are stainless.

INCH

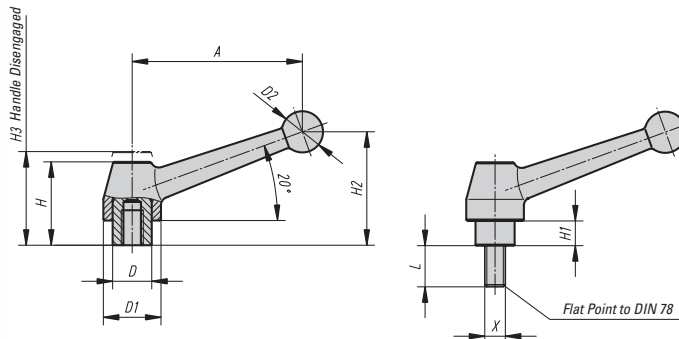
Part # Steel	Part # Stainless	X Thread	T	D	D1	D2	H	H1	H2	H3	A	No. Of Teeth
06440-1A3	06440-11A3	5/16-18	.67	.75	1.10	.79	1.61	.47	2.13	1.93	3.27	24
06440-1A4	06440-11A4	3/8-16	.67	.75	1.10	.79	1.61	.47	2.13	1.93	3.27	24
06440-1A5	06440-11A5	1/2-13	.67	.75	1.10	.79	1.61	.47	2.13	1.93	3.27	24
06440-2A5	—	1/2-13	.91	.91	1.38	.98	1.97	.47	2.72	2.20	4.25	26
06440-2A6	—	5/8-11	.91	.91	1.38	.98	1.97	.47	2.72	2.20	4.25	26
06440-3A6	—	5/8-11	1.06	1.18	1.69	1.18	2.30	.47	3.07	2.56	5.20	36
06440-3A7	—	3/4-10	1.06	1.18	1.69	1.18	2.30	.47	3.07	2.56	5.20	36

METRIC

Part # Steel	Part # Stainless	X Thread	T mm	D mm	D1 mm	D2 mm	H mm	H1 mm	H2 mm	H3 mm	A mm	No. Of Teeth
06440-108	06440-1108	M8	17	19	28	20	41	12	54	49	83	24
06440-110	06440-1110	M10	17	19	28	20	41	12	54	49	83	24
06440-112	06440-1112	M12	17	19	28	20	41	12	54	49	83	24
06440-212	—	M12	23	23	35	25	50	12	69	56	108	26
06440-216	—	M16	23	23	35	25	50	12	69	56	108	26
06440-316	—	M16	27	30	43	30	58.5	12	78	65	132	36
06440-320	—	M20	27	30	43	30	58.5	12	78	65	132	36

ADJUSTABLE CLAMP LEVERS

Steel and Stainless Steel | Male Threads | Inch



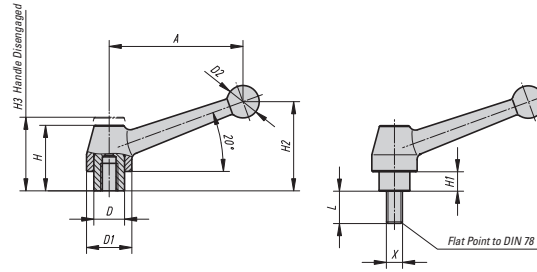
Pulling up on the handle disengages it from the spline and allows it to rotate freely for adjustment. Releasing the handle engages it for tightening or adjusting. The handles are made from steel or stainless steel. The steel handles have a silver-grey hammertone powder coat finish and the internal steel parts and studs are black oxidized. The stainless handles are electro-polished and the internal parts and studs are stainless.

INCH

Part # Steel	Part # Stainless	X Thread	L	D	D1	D2	H	H1	H2	H3	A	No. Of Teeth
06441-1A4X20	06441-11A4X20	3/8-16	.79	.75	1.10	.79	1.61	.47	2.13	1.93	3.27	24
06441-1A4X30	06441-11A4X30	3/8-16	1.18	.75	1.10	.79	1.61	.47	2.13	1.93	3.27	24
06441-1A4X40	06441-11A4X40	3/8-16	1.57	.75	1.10	.79	1.61	.47	2.13	1.93	3.27	24
06441-1A4X45	06441-11A4X45	3/8-16	1.77	.75	1.10	.79	1.61	.47	2.13	1.93	3.27	24
06441-1A4X50	06441-11A4X50	3/8-16	1.97	.75	1.10	.79	1.61	.47	2.13	1.93	3.27	24
06441-1A4X60	06441-11A4X60	3/8-16	2.36	.75	1.10	.79	1.61	.47	2.13	1.93	3.27	24
06441-1A5X20	06441-11A5X20	1/2-13	.79	.75	1.10	.79	1.61	.47	2.13	1.93	3.27	24
06441-1A5X30	06441-11A5X30	1/2-13	1.18	.75	1.10	.79	1.61	.47	2.13	1.93	3.27	24
06441-1A5X40	06441-11A5X40	1/2-13	1.57	.75	1.10	.79	1.61	.47	2.13	1.93	3.27	24
06441-1A5X45	06441-11A5X45	1/2-13	1.77	.75	1.10	.79	1.61	.47	2.13	1.93	3.27	24
06441-1A5X50	06441-11A5X50	1/2-13	1.97	.75	1.10	.79	1.61	.47	2.13	1.93	3.27	24
06441-1A5X60	06441-11A5X60	1/2-13	2.36	.75	1.10	.79	1.61	.47	2.13	1.93	3.27	24
06441-2A5X25	—	1/2-13	.98	.91	1.38	.98	1.97	.47	2.72	2.20	4.25	26
06441-2A5X30	—	1/2-13	1.18	.91	1.38	.98	1.97	.47	2.72	2.20	4.25	26
06441-2A5X40	—	1/2-13	1.57	.91	1.38	.98	1.97	.47	2.72	2.20	4.25	26
06441-2A5X45	—	1/2-13	1.77	.91	1.38	.98	1.97	.47	2.72	2.20	4.25	26
06441-2A5X50	—	1/2-13	1.97	.91	1.38	.98	1.97	.47	2.72	2.20	4.25	26
06441-2A5X60	—	1/2-13	2.36	.91	1.38	.98	1.97	.47	2.72	2.20	4.25	26
06441-2A6X25	—	5/8-11	.98	.91	1.38	.98	1.97	.47	2.72	2.20	4.25	26
06441-2A6X30	—	5/8-11	1.18	.91	1.38	.98	1.97	.47	2.72	2.20	4.25	26
06441-2A6X40	—	5/8-11	1.57	.91	1.38	.98	1.97	.47	2.72	2.20	4.25	26
06441-2A6X45	—	5/8-11	1.77	.91	1.38	.98	1.97	.47	2.72	2.20	4.25	26
06441-2A6X50	—	5/8-11	1.97	.91	1.38	.98	1.97	.47	2.72	2.20	4.25	26
06441-2A6X60	—	5/8-11	2.36	.91	1.38	.98	1.97	.47	2.72	2.20	4.25	26
06441-3A6X30	—	5/8-11	1.18	1.18	1.69	1.18	2.30	.47	3.07	2.56	5.20	36
06441-3A6X40	—	5/8-11	1.57	1.18	1.69	1.18	2.30	.47	3.07	2.56	5.20	36
06441-3A6X50	—	5/8-11	1.97	1.18	1.69	1.18	2.30	.47	3.07	2.56	5.20	36
06441-3A6X60	—	5/8-11	2.36	1.18	1.69	1.18	2.30	.47	3.07	2.56	5.20	36
06441-3A7X30	—	3/4-10	1.18	1.18	1.69	1.18	2.30	.47	3.07	2.56	5.20	36
06441-3A7X40	—	3/4-10	1.57	1.18	1.69	1.18	2.30	.47	3.07	2.56	5.20	36
06441-3A7X50	—	3/4-10	1.97	1.18	1.69	1.18	2.30	.47	3.07	2.56	5.20	36
06441-3A7X60	—	3/4-10	2.36	1.18	1.69	1.18	2.30	.47	3.07	2.56	5.20	36

ADJUSTABLE CLAMP LEVERS

Steel and Stainless Steel | Male Threads | Metric



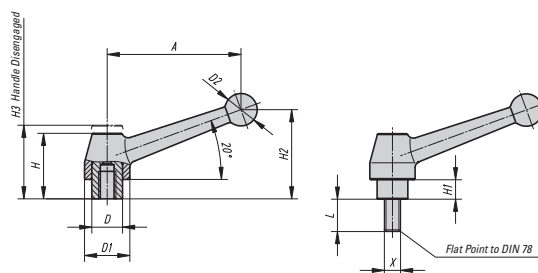
Pulling up on the handle disengages it from the spline and allows it to rotate freely for adjustment. Releasing the handle engages it for tightening or adjusting. The handles are made from steel or stainless steel. The steel handles have a silver-grey hammertone powder coat finish and the internal steel parts and studs are black oxidized. The stainless handles are electro-polished and the internal parts and studs are stainless.

METRIC

Part # Steel	Part # Stainless	X Thread	L mm	D mm	D1 mm	D2 mm	H mm	H1 mm	H2 mm	H3 mm	A mm	No. Of Teeth
06441-110X20	—	M10	20	19	28	20	41	12	54	49	83	24
06441-110X25	06441-1110X25	M10	25	19	28	20	41	12	54	49	83	24
06441-110X30	06441-1110X30	M10	30	19	28	20	41	12	54	49	83	24
06441-110X35	—	M10	35	19	28	20	41	12	54	49	83	24
06441-110X40	06441-1110X40	M10	40	19	28	20	41	12	54	49	83	24
06441-110X45	—	M10	45	19	28	20	41	12	54	49	83	24
06441-110X50	06441-1110X50	M10	50	19	28	20	41	12	54	49	83	24
06441-110X55	—	M10	55	19	28	20	41	12	54	49	83	24
06441-110X60	06441-1110X60	M10	60	19	28	20	41	12	54	49	83	24
06441-110X70	—	M10	70	19	28	20	41	12	54	49	83	24
06441-110X80	—	M10	80	19	28	20	41	12	54	49	83	24
06441-110X90	—	M10	90	19	28	20	41	12	54	49	83	24
06441-112X20	—	M12	20	19	28	20	41	12	54	49	83	24
06441-112X25	06441-1112X25	M12	25	19	28	20	41	12	54	49	83	24
06441-112X30	06441-1112X30	M12	30	19	28	20	41	12	54	49	83	24
06441-112X35	—	M12	35	19	28	20	41	12	54	49	83	24
06441-112X40	06441-1112X40	M12	40	19	28	20	41	12	54	49	83	24
06441-112X45	—	M12	45	19	28	20	41	12	54	49	83	24
06441-112X50	06441-1112X50	M12	50	19	28	20	41	12	54	49	83	24
06441-112X55	—	M12	55	19	28	20	41	12	54	49	83	24
06441-112X60	06441-1112X60	M12	60	19	28	20	41	12	54	49	83	24
06441-112X70	—	M12	70	19	28	20	41	12	54	49	83	24
06441-112X80	—	M12	80	19	28	20	41	12	54	49	83	24
06441-112X90	—	M12	90	19	28	20	41	12	54	49	83	24
06441-212X25	—	M12	25	23	35	25	50	12	69	56	108	26
06441-212X30	—	M12	30	23	35	25	50	12	69	56	108	26
06441-212X35	—	M12	35	23	35	25	50	12	69	56	108	26
06441-212X40	—	M12	40	23	35	25	50	12	69	56	108	26
06441-212X45	—	M12	45	23	35	25	50	12	69	56	108	26
06441-212X50	—	M12	50	23	35	25	50	12	69	56	108	26
06441-212X55	—	M12	55	23	35	25	50	12	69	56	108	26
06441-212X60	—	M12	60	23	35	25	50	12	69	56	108	26
06441-212X70	—	M12	70	23	35	25	50	12	69	56	108	26
06441-212X80	—	M12	80	23	35	25	50	12	69	56	108	26
06441-212X90	—	M12	90	23	35	25	50	12	69	56	108	26
06441-216X25	—	M16	25	23	35	25	50	12	69	56	108	26
06441-216X30	—	M16	30	23	35	25	50	12	69	56	108	26
06441-216X35	—	M16	35	23	35	25	50	12	69	56	108	26
06441-216X40	—	M16	40	23	35	25	50	12	69	56	108	26
06441-216X45	—	M16	45	23	35	25	50	12	69	56	108	26
06441-216X50	—	M16	50	23	35	25	50	12	69	56	108	26
06441-216X55	—	M16	55	23	35	25	50	12	69	56	108	26
06441-216X60	—	M16	60	23	35	25	50	12	69	56	108	26
06441-216X70	—	M16	70	23	35	25	50	12	69	56	108	26
06441-216X80	—	M16	80	23	35	25	50	12	69	56	108	26
06441-216X90	—	M16	90	23	35	25	50	12	69	56	108	26

ADJUSTABLE CLAMP LEVERS

Steel and Stainless Steel | Male Threads | Metric (continued)



METRIC (CONTINUED)

Part # Steel	Part # Stainless	X Thread	L mm	D mm	D1 mm	D2 mm	H mm	H1 mm	H2 mm	H3 mm	A mm	No. Of Teeth
06441-316X30	—	M16	30	30	43	30	58.5	12	78	65	132	36
06441-316X40	—	M16	40	30	43	30	58.5	12	78	65	132	36
06441-316X50	—	M16	50	30	43	30	58.5	12	78	65	132	36
06441-316X60	—	M16	60	30	43	30	58.5	12	78	65	132	36
06441-316X70	—	M16	70	30	43	30	58.5	12	78	65	132	36
06441-316X80	—	M16	80	30	43	30	58.5	12	78	65	132	36
06441-316X90	—	M16	90	30	43	30	58.5	12	78	65	132	36
06441-320X30	—	M20	30	30	43	30	58.5	12	78	65	132	36
06441-320X40	—	M20	40	30	43	30	58.5	12	78	65	132	36
06441-320X50	—	M20	50	30	43	30	58.5	12	78	65	132	36
06441-320X60	—	M20	60	30	43	30	58.5	12	78	65	132	36
06441-320X70	—	M20	70	30	43	30	58.5	12	78	65	132	36
06441-320X80	—	M20	80	30	43	30	58.5	12	78	65	132	36
06441-320X90	—	M20	90	30	43	30	58.5	12	78	65	132	36