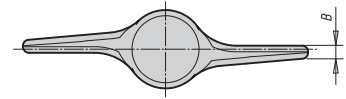
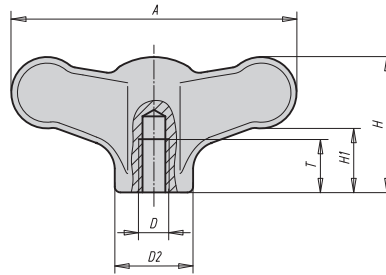


## WING GRIPS

### Stainless Steel | Inch and Metric



Made from stainless steel. Ground and polished. Ideal for food or medical applications.

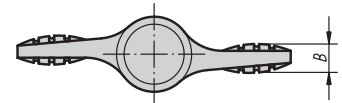
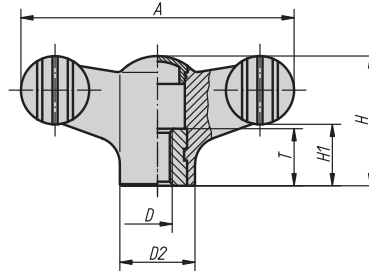
INCH															
Part #	D	D2	A	B	H	H1	T	Part #	D	D2	A	B	H	H1	T
06651-9AE	8-32	.41	1.5	.07	.71	.33	.35	06651-1A1	10-32	.55	1.97	.09	.94	.45	.47
06651-9A1	10-32	.41	1.5	.07	.71	.33	.35	06651-1A2	1/4-20	.55	1.97	.09	.94	.45	.39
06651-9A2	1/4-20	.41	1.5	.07	.71	.33	.35	06651-2A3	5/16-18	.83	2.95	.13	1.38	.65	.55
06651-1A0	10-24	.55	1.97	.09	.94	.45	.39	06651-2A4	3/8-16	.83	2.95	.13	1.38	.65	.55

METRIC															
Part #	D mm	D2 mm	A mm	B mm	H mm	H1 mm	T mm	Part #	D mm	D2 mm	A mm	B mm	H mm	H1 mm	T mm
06651-904	M4	10.5	38	1.7	18	8.5	9	06651-106	M6	14	50	2.3	24	11.5	12
06651-905	M5	10.5	38	1.7	18	8.5	9	06651-208	M8	21	75	3.4	35	16.5	15
06651-906	M6	10.5	38	1.7	18	8.5	9	06651-210	M10	21	75	3.4	35	16.5	15
06651-105	M5	14	50	2.3	24	11.5	12								

### Plastic | Female Threads | Steel and Stainless Inserts | Inch and Metric



**Novo-GRIP** by



Firm sure ergonomic gripping with an attractive appearance. Made from dark grey thermoplastic. Inserts are available in steel or stainless steel. They are available with dark grey, light grey, traffic red and bright yellow caps. See [www.fixtureworks.net](http://www.fixtureworks.net) for colors.

INCH									
Part # Steel	Part # Stainless	D	D2	A	B	H	H1	T	
06652-1A1*	06652-01A1*	10-32	.55	1.97	.20	.94	.45	.39	
06652-1A2*	06652-01A2*	1/4-20	.55	1.97	.20	.94	.45	.39	
06652-2A3*	06652-02A3*	5/16-18	.83	2.95	.28	1.38	.65	.55	
06652-2A4*	06652-02A4*	3/8-16	.83	2.95	.28	1.38	.65	.55	

\* Add the desired cap color here. No color code is required for dark grey. Light Grey = 5, Traffic Red = 6, Bright Yellow = 7

METRIC									
Part # Steel	Part # Stainless	D mm	D2 mm	A mm	B mm	H mm	H1 mm	T mm	
06652-105*	06652-0105*	M5	14	50	5	24	11.5	10	
06652-106*	06652-0106*	M6	14	50	5	24	11.5	10	
06652-208*	06652-0208*	M8	21	75	7	35	16.5	14	
06652-210*	06652-0210*	M10	21	75	7	35	16.5	14	

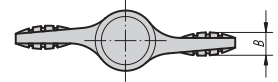
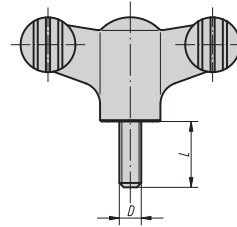
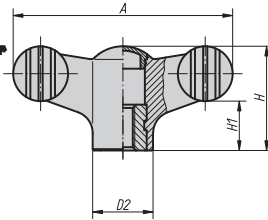
\* Add the desired cap color here. No color code is required for dark grey. Light Grey = 5, Traffic Red = 6, Bright Yellow = 7

## WING GRIPS

### Plastic | Male Threads | Steel and Stainless Studs | Inch and Metric



**Novo-GRIP** by



Firm sure ergonomic gripping with an attractive appearance. Made from dark grey thermoplastic. Studs are available in steel or stainless steel. They are available with dark grey, light grey, traffic red and bright yellow caps. See [www.fixtureworks.net](http://www.fixtureworks.net) for colors.

#### INCH

Part # Steel	Part # Stainless	D	L	D2	A	B	H	H1
06652-1A1*X10	06652-01A1*X10	10-32	.39	.55	1.97	.20	.94	.45
06652-1A1*X20	06652-01A1*X20	10-32	.79	.55	1.97	.20	.94	.45
06652-1A2*X20	06652-01A2*X20	1/4-20	.79	.55	1.97	.20	.94	.45
06652-1A2*X30	06652-01A2*X30	1/4-20	1.18	.55	1.97	.20	.94	.45
06652-1A3*X20	06652-01A3*X20	5/16-18	.79	.55	1.97	.20	.94	.45
06652-1A3*X40	06652-01A3*X40	5/16-18	1.57	.55	1.97	.20	.94	.45
06652-2A3*X20	06652-02A3*X20	5/16-18	.79	.83	2.95	.28	1.38	.65
06652-2A3*X40	06652-02A3*X40	5/16-18	1.57	.83	2.95	.28	1.38	.65
06652-2A4*X20	06652-02A4*X20	3/8-16	.79	.83	2.95	.28	1.38	.65
06652-2A4*X40	06652-02A4*X40	3/8-16	1.57	.83	2.95	.28	1.38	.65

\* Add the desired cap color here. No color code is required for dark grey. Light Grey = 5, Traffic Red = 6, Bright Yellow = 7

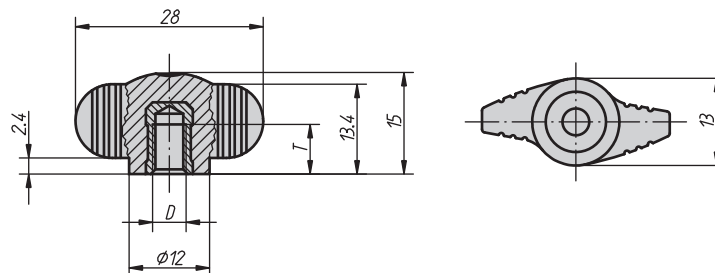
#### METRIC

Part # Steel	Part # Stainless	D mm	L mm	D2 mm	A mm	B mm	H mm	H1 mm
06652-105*X15	06652-0105*X15	M5	15	14	50	5	24	11.5
06652-105*X20	06652-0105*X20	M5	20	14	50	5	24	11.5
06652-106*X20	06652-0106*X20	M6	20	14	50	5	24	11.5
06652-106*X30	06652-0106*X30	M6	30	14	50	5	24	11.5
06652-106*X40	06652-0106*X40	M6	40	14	50	5	24	11.5
06652-108*X20	06652-0108*X20	M8	20	14	50	5	24	11.5
06652-108*X30	06652-0108*X30	M8	30	14	50	5	24	11.5
06652-108*X40	06652-0108*X40	M8	40	14	50	5	24	11.5
06652-208*X20	06652-0208*X20	M8	20	21	75	7	35	16.5
06652-208*X30	06652-0208*X30	M8	30	21	75	7	35	16.5
06652-208*X40	06652-0208*X40	M8	40	21	75	7	35	16.5
06652-210*X20	06652-0210*X20	M10	20	21	75	7	35	16.5
06652-210*X30	06652-0210*X30	M10	30	21	75	7	35	16.5
06652-210*X40	06652-0210*X40	M10	40	21	75	7	35	16.5
06652-210*X50	06652-0210*X50	M10	50	21	75	7	35	16.5

\* Add the desired cap color here. No color code is required for dark grey. Light Grey = 5, Traffic Red = 6, Bright Yellow = 7

## MINI-WING GRIPS

### Plastic | Female Threads | Brass and Stainless Inserts | Inch and Metric



Firm sure ergonomic gripping with an attractive appearance. Made from dark grey thermoplastic. Inserts are available in brass or stainless steel.

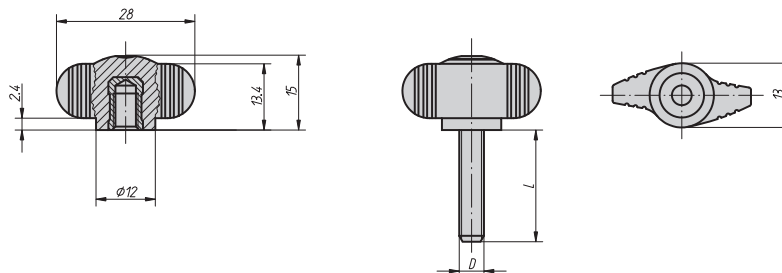
#### INCH

Part # Brass	Part # Stainless	D	T
06652-0AE	06652-00AE	8-32	.24
06652-0A1	06652-00A1	10-32	.30
06652-0A2	06652-00A2	1/4-20	.35

#### METRIC

Part # Brass	Part # Stainless	D mm	T mm
06652-004	06652-0004	M4	6
06652-005	06652-0005	M5	7.5
06652-006	06652-0006	M6	9

### Plastic | Male Threads | Steel and Stainless Studs | Inch and Metric



Firm sure ergonomic gripping with an attractive appearance. Made from dark grey thermoplastic. Studs are available in steel or stainless steel.

#### INCH

Part # Steel	Part # Stainless	D	L
06652-0AEX10	06652-00AEX10	8-32	.39
06652-0AEX20	06652-00AEX20	8-32	.79
06652-0A1X10	06652-00A1X10	10-32	.39
06652-0A1X20	06652-00A1X20	10-32	.79
06652-0A2X20	06652-00A2X20	1/4-20	.79
06652-0A2X30	06652-00A2X30	1/4-20	1.18
06652-0A3X20	06652-00A3X20	5/16-18	.79
06652-0A3X40	06652-00A3X40	5/16-18	1.57

#### METRIC

Part # Steel	Part # Stainless	D mm	L mm
06652-004X8	06652-0004X8	M4	8
06652-005X10	06652-0005X10	M5	10
06652-005X15	06652-0005X15	M5	15
06652-005X20	06652-0005X20	M5	20
06652-006X10	06652-0006X10	M6	10
06652-006X15	06652-0006X15	M6	15
06652-006X20	06652-0006X20	M6	20
06652-006X25	06652-0006X25	M6	25
06652-006X30	06652-0006X30	M6	30
06652-008X20	06652-0008X20	M8	20
06652-008X25	06652-0008X25	M8	25
06652-008X30	06652-0008X30	M8	30
06652-008X40	06652-0008X40	M8	40