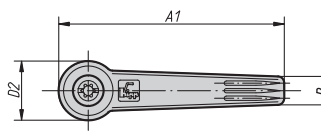
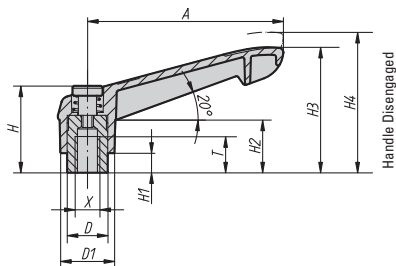


ADJUSTABLE CLAMP HANDLES

Plastic | Female Threads | Steel Inserts | Inch and Metric



Pulling up on the handle disengages it from the spline and allows it to rotate freely for adjustment. Releasing the handle engages it for tightening or adjusting. The handle is made from glass fiber reinforced plastic. Internal parts are made from steel with black oxide finish. They are available in dark grey, orange, signal green, traffic red, bright yellow and traffic blue. See www.fixtureworks.net for colors.

INCH

Part #	X Thread	T	D	D1	D2	H	H1	H2	H3	H4	A	A1	B	No. Of Teeth
06600-1AE*	8-32	.35	.39	.51	.57	.96	.16	.59	1.18	1.32	1.57	1.85	.30	16
06600-1A0*	10-24	.35	.39	.51	.57	.96	.16	.59	1.18	1.32	1.57	1.85	.30	16
06600-1A2*	1/4-20	.35	.39	.51	.57	.96	.16	.59	1.18	1.32	1.57	1.85	.30	16
06600-2A2*	1/4-20	.47	.53	.71	.77	1.12	.26	.69	1.63	1.79	2.56	2.95	.37	20
06600-2A3*	5/16-18	.47	.53	.71	.77	1.12	.26	.69	1.63	1.79	2.56	2.95	.37	20
06600-3A3*	5/16-18	.55	.63	.85	.91	1.46	.39	.94	2.11	2.28	3.15	3.60	.43	22
06600-3A4*	3/8-16	.55	.63	.85	.91	1.46	.39	.94	2.11	2.28	3.15	3.60	.43	22
06600-4A4*	3/8-16	.67	.75	1.00	1.08	1.69	.39	1.02	2.40	2.60	3.74	4.29	.51	24
06600-4A5*	1/2-13	.67	.75	1.00	1.08	1.69	.39	1.02	2.40	2.60	3.74	4.29	.51	24
06600-5A5*	1/2-13	.91	.91	1.18	1.28	1.93	.47	1.30	2.83	3.03	4.33	4.96	.61	26
06600-5A6*	5/8-11	.91	.91	1.18	1.28	1.93	.47	1.30	2.83	3.03	4.33	4.96	.61	26

* Add the color to the end of the part number. Dark Grey = 1, Orange = 2, Signal Green = 86, Traffic Red = 84, Bright Yellow = 16 and Traffic Blue = 87. See www.fixtureworks.net for colors.

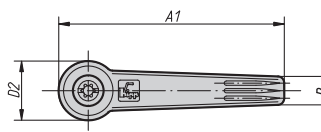
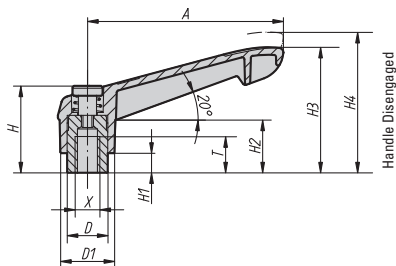
METRIC

Part #	X Thread	T mm	D mm	D1 mm	D2 mm	H mm	H1 mm	H2 mm	H3 mm	H4 mm	A mm	A1 mm	B mm	No. Of Teeth
06600-104*	M4	9	10	13	14.5	24.5	4	15	30	33.5	40	47	7.5	16
06600-105*	M5	9	10	13	14.5	24.5	4	15	30	33.5	40	47	7.5	16
06600-106*	M6	9	10	13	14.5	24.5	4	15	30	33.5	40	47	7.5	16
06600-206*	M6	12	13.5	18	19.5	28.5	6.5	17.5	41.5	45.5	65	75	9.5	20
06600-208*	M8	12	13.5	18	19.5	28.5	6.5	17.5	41.5	45.5	65	75	9.5	20
06600-308*	M8	14	16	21.5	23	37	10	24	53.5	58	80	91.5	11	22
06600-310*	M10	14	16	21.5	23	37	10	24	53.5	58	80	91.5	11	22
06600-410*	M10	17	19	25.5	27.5	43	10	26	61	66	95	109	13	24
06600-412*	M12	17	19	25.5	27.5	43	10	26	61	66	95	109	13	24
06600-512*	M12	23	23	30	32.5	49	12	33	72	77	110	126	15.5	26
06600-516*	M16	23	23	30	32.5	49	12	33	72	77	110	126	15.5	26

* Add the color to the end of the part number. Dark Grey = 1, Orange = 2, Signal Green = 86, Traffic Red = 84, Bright Yellow = 16 and Traffic Blue = 87. See www.fixtureworks.net for colors.

ADJUSTABLE CLAMP HANDLES

Plastic | Female Threads | Stainless Steel Inserts | Inch and Metric



Pulling up on the handle disengages it from the spline and allows it to rotate freely for adjustment. Releasing the handle engages it for tightening or adjusting. The handle is made from glass fiber reinforced plastic. Internal parts are made from stainless steel. They are available in dark grey, orange, signal green, traffic red, bright yellow and traffic blue. See www.fixtureworks.net for colors.

INCH

Part #	X Thread	T	D	D1	D2	H	H1	H2	H3	H4	A	A1	B	No. Of Teeth
06601-1A0*	10-24	.35	.39	.51	.57	.96	.16	.59	1.18	1.32	1.57	1.85	.30	16
06601-1A2*	1/4-20	.35	.39	.51	.57	.96	.16	.59	1.18	1.32	1.57	1.85	.30	16
06601-2A2*	1/4-20	.47	.53	.71	.77	1.12	.26	.69	1.63	1.79	2.56	2.95	.37	20
06601-2A3*	5/16-18	.47	.53	.71	.77	1.12	.26	.69	1.63	1.79	2.56	2.95	.37	20
06601-3A3*	5/16-18	.55	.63	.85	.91	1.46	.39	.94	2.11	2.28	3.15	3.60	.43	22
06601-3A4*	3/8-16	.55	.63	.85	.91	1.46	.39	.94	2.11	2.28	3.15	3.60	.43	22
06601-4A4*	3/8-16	.67	.75	1.00	1.08	1.69	.39	1.02	2.40	2.60	3.74	4.29	.51	24
06601-4A5*	1/2-13	.67	.75	1.00	1.08	1.69	.39	1.02	2.40	2.60	3.74	4.29	.51	24
06601-5A5*	1/2-13	.91	.91	1.18	1.28	1.93	.47	1.30	2.83	3.03	4.33	4.96	.61	26
06601-5A6*	5/8-11	.91	.91	1.18	1.28	1.93	.47	1.30	2.83	3.03	4.33	4.96	.61	26

* Add the color to the end of the part number. Dark Grey = 1, Orange = 2, Signal Green = 86, Traffic Red = 84, Bright Yellow = 16 and Traffic Blue = 87. See www.fixtureworks.net for colors.

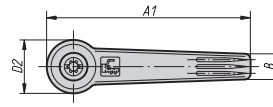
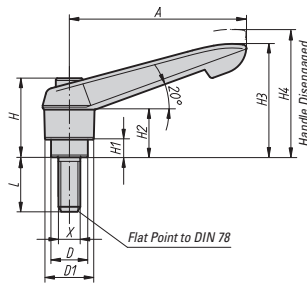
METRIC

Part #	X Thread	T mm	D mm	D1 mm	D2 mm	H mm	H1 mm	H2 mm	H3 mm	H4 mm	A mm	A1 mm	B mm	No. Of Teeth
06601-105*	M5	9	10	13	14.5	24.5	4	15	30	33.5	40	47	7.5	16
06601-106*	M6	9	10	13	14.5	24.5	4	15	30	33.5	40	47	7.5	16
06601-206*	M6	12	13.5	18	19.5	28.5	6.5	17.5	41.5	45.5	65	75	9.5	20
06601-208*	M8	12	13.5	18	19.5	28.5	6.5	17.5	41.5	45.5	65	75	9.5	20
06601-308*	M8	14	16	21.5	23	37	10	24	53.5	58	80	91.5	11	22
06601-310*	M10	14	16	21.5	23	37	10	24	53.5	58	80	91.5	11	22
06601-410*	M10	17	19	25.5	27.5	43	10	26	61	66	95	109	13	24
06601-412*	M12	17	19	25.5	27.5	43	10	26	61	66	95	109	13	24
06601-512*	M12	23	23	30	32.5	49	12	33	72	77	110	126	15.5	26
06601-516*	M16	23	23	30	32.5	49	12	33	72	77	110	126	15.5	26

* Add the color to the end of the part number. Dark Grey = 1, Orange = 2, Signal Green = 86, Traffic Red = 84, Bright Yellow = 16 and Traffic Blue = 87. See www.fixtureworks.net for colors.

ADJUSTABLE CLAMP HANDLES

Plastic | Male Threads | Steel Studs | Inch



Pulling up on the handle disengages it from the spline and allows it to rotate freely for adjustment. Releasing the handle engages it for tightening or adjusting. The handle is made from glass fiber reinforced plastic. Internal parts and studs are made from steel with black oxide finish. They are available in dark grey, orange, signal green, traffic red, bright yellow and traffic blue. See www.fixtureworks.net for colors.

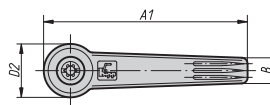
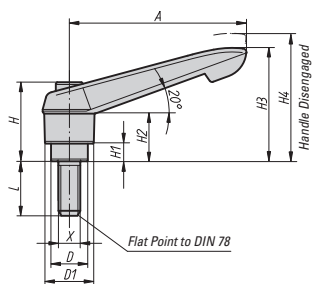
INCH

Part #	X Thread	L	D	D1	D2	H	H1	H2	H3	H4	A	A1	B	No. Of Teeth
06610-1A0*X10	10-24	.39	.39	.51	.57	.96	.16	.59	1.18	1.32	1.57	1.85	.30	16
06610-1A0*X15	10-24	.59	.39	.51	.57	.96	.16	.59	1.18	1.32	1.57	1.85	.30	16
06610-1A0*X20	10-24	.79	.39	.51	.57	.96	.16	.59	1.18	1.32	1.57	1.85	.30	16
06610-1A0*X25	10-24	.98	.39	.51	.57	.96	.16	.59	1.18	1.32	1.57	1.85	.30	16
06610-1A0*X30	10-24	1.18	.39	.51	.57	.96	.16	.59	1.18	1.32	1.57	1.85	.30	16
06610-1A0*X35	10-24	1.38	.39	.51	.57	.96	.16	.59	1.18	1.32	1.57	1.85	.30	16
06610-1A0*X40	10-24	1.57	.39	.51	.57	.96	.16	.59	1.18	1.32	1.57	1.85	.30	16
06610-1A0*X45	10-24	1.77	.39	.51	.57	.96	.16	.59	1.18	1.32	1.57	1.85	.30	16
06610-1A0*X50	10-24	1.97	.39	.51	.57	.96	.16	.59	1.18	1.32	1.57	1.85	.30	16
06610-1A2*X10	1/4-20	.39	.39	.51	.57	.96	.16	.59	1.18	1.32	1.57	1.85	.30	16
06610-1A2*X15	1/4-20	.59	.39	.51	.57	.96	.16	.59	1.18	1.32	1.57	1.85	.30	16
06610-1A2*X20	1/4-20	.79	.39	.51	.57	.96	.16	.59	1.18	1.32	1.57	1.85	.30	16
06610-1A2*X25	1/4-20	.98	.39	.51	.57	.96	.16	.59	1.18	1.32	1.57	1.85	.30	16
06610-1A2*X30	1/4-20	1.18	.39	.51	.57	.96	.16	.59	1.18	1.32	1.57	1.85	.30	16
06610-1A2*X35	1/4-20	1.38	.39	.51	.57	.96	.16	.59	1.18	1.32	1.57	1.85	.30	16
06610-1A2*X40	1/4-20	1.57	.39	.51	.57	.96	.16	.59	1.18	1.32	1.57	1.85	.30	16
06610-1A2*X45	1/4-20	1.77	.39	.51	.57	.96	.16	.59	1.18	1.32	1.57	1.85	.30	16
06610-1A2*X50	1/4-20	1.97	.39	.51	.57	.96	.16	.59	1.18	1.32	1.57	1.85	.30	16
06610-2A2*X15	1/4-20	.59	.53	.71	.77	1.12	.26	.69	1.63	1.79	2.56	2.95	.37	20
06610-2A2*X20	1/4-20	.79	.53	.71	.77	1.12	.26	.69	1.63	1.79	2.56	2.95	.37	20
06610-2A2*X25	1/4-20	.98	.53	.71	.77	1.12	.26	.69	1.63	1.79	2.56	2.95	.37	20
06610-2A2*X30	1/4-20	1.18	.53	.71	.77	1.12	.26	.69	1.63	1.79	2.56	2.95	.37	20
06610-2A2*X35	1/4-20	1.38	.53	.71	.77	1.12	.26	.69	1.63	1.79	2.56	2.95	.37	20
06610-2A2*X40	1/4-20	1.57	.53	.71	.77	1.12	.26	.69	1.63	1.79	2.56	2.95	.37	20
06610-2A2*X45	1/4-20	1.77	.53	.71	.77	1.12	.26	.69	1.63	1.79	2.56	2.95	.37	20
06610-2A2*X50	1/4-20	1.97	.53	.71	.77	1.12	.26	.69	1.63	1.79	2.56	2.95	.37	20
06610-2A2*X55	1/4-20	2.17	.53	.71	.77	1.12	.26	.69	1.63	1.79	2.56	2.95	.37	20
06610-2A2*X60	1/4-20	2.36	.53	.71	.77	1.12	.26	.69	1.63	1.79	2.56	2.95	.37	20
06610-2A3*X15	5/16-18	.59	.53	.71	.77	1.12	.26	.69	1.63	1.79	2.56	2.95	.37	20
06610-2A3*X20	5/16-18	.79	.53	.71	.77	1.12	.26	.69	1.63	1.79	2.56	2.95	.37	20
06610-2A3*X25	5/16-18	.98	.53	.71	.77	1.12	.26	.69	1.63	1.79	2.56	2.95	.37	20
06610-2A3*X30	5/16-18	1.18	.53	.71	.77	1.12	.26	.69	1.63	1.79	2.56	2.95	.37	20
06610-2A3*X35	5/16-18	1.38	.53	.71	.77	1.12	.26	.69	1.63	1.79	2.56	2.95	.37	20
06610-2A3*X40	5/16-18	1.57	.53	.71	.77	1.12	.26	.69	1.63	1.79	2.56	2.95	.37	20
06610-2A3*X45	5/16-18	1.77	.53	.71	.77	1.12	.26	.69	1.63	1.79	2.56	2.95	.37	20
06610-2A3*X50	5/16-18	1.97	.53	.71	.77	1.12	.26	.69	1.63	1.79	2.56	2.95	.37	20
06610-2A3*X55	5/16-18	2.17	.53	.71	.77	1.12	.26	.69	1.63	1.79	2.56	2.95	.37	20
06610-2A3*X60	5/16-18	2.36	.53	.71	.77	1.12	.26	.69	1.63	1.79	2.56	2.95	.37	20
06610-2A4*X15	3/8-16	.59	.53	.71	.77	1.12	.26	.69	1.63	1.79	2.56	2.95	.37	20
06610-2A4*X20	3/8-16	.79	.53	.71	.77	1.12	.26	.69	1.63	1.79	2.56	2.95	.37	20
06610-2A4*X25	3/8-16	.98	.53	.71	.77	1.12	.26	.69	1.63	1.79	2.56	2.95	.37	20
06610-2A4*X30	3/8-16	1.18	.53	.71	.77	1.12	.26	.69	1.63	1.79	2.56	2.95	.37	20
06610-2A4*X35	3/8-16	1.38	.53	.71	.77	1.12	.26	.69	1.63	1.79	2.56	2.95	.37	20
06610-2A4*X40	3/8-16	1.57	.53	.71	.77	1.12	.26	.69	1.63	1.79	2.56	2.95	.37	20
06610-2A4*X45	3/8-16	1.77	.53	.71	.77	1.12	.26	.69	1.63	1.79	2.56	2.95	.37	20
06610-2A4*X50	3/8-16	1.97	.53	.71	.77	1.12	.26	.69	1.63	1.79	2.56	2.95	.37	20
06610-2A4*X55	3/8-16	2.17	.53	.71	.77	1.12	.26	.69	1.63	1.79	2.56	2.95	.37	20
06610-2A4*X60	3/8-16	2.36	.53	.71	.77	1.12	.26	.69	1.63	1.79	2.56	2.95	.37	20

* Add the color to the part number here. Dark Grey = 1, Orange = 2, Signal Green = 86, Traffic Red = 84, Bright Yellow = 16 and Traffic Blue = 87. See www.fixtureworks.net for colors.

ADJUSTABLE CLAMP HANDLES

Plastic | Male Threads | Steel Studs | Metric



Pulling up on the handle disengages it from the spline and allows it to rotate freely for adjustment. Releasing the handle engages it for tightening or adjusting. The handle is made from glass fiber reinforced plastic. Internal parts and studs are made from steel with black oxide finish. They are available in dark grey, orange, signal green, traffic red, bright yellow and traffic blue. See www.fixtureworks.net for colors.

METRIC

Part #	X Thread	L mm	D mm	D1 mm	D2 mm	H mm	H1 mm	H2 mm	H3 mm	H4 mm	A mm	A1 mm	B mm	No. Of Teeth
06610-105*X10	M5	10	10	13	14.5	24.5	4	15	30	33.5	40	47	7.5	16
06610-105*X15	M5	15	10	13	14.5	24.5	4	15	30	33.5	40	47	7.5	16
06610-105*X20	M5	20	10	13	14.5	24.5	4	15	30	33.5	40	47	7.5	16
06610-105*X25	M5	25	10	13	14.5	24.5	4	15	30	33.5	40	47	7.5	16
06610-105*X30	M5	30	10	13	14.5	24.5	4	15	30	33.5	40	47	7.5	16
06610-105*X35	M5	35	10	13	14.5	24.5	4	15	30	33.5	40	47	7.5	16
06610-105*X40	M5	40	10	13	14.5	24.5	4	15	30	33.5	40	47	7.5	16
06610-105*X45	M5	45	10	13	14.5	24.5	4	15	30	33.5	40	47	7.5	16
06610-105*X50	M5	50	10	13	14.5	24.5	4	15	30	33.5	40	47	7.5	16
06610-106*X10	M6	10	10	13	14.5	24.5	4	15	30	33.5	40	47	7.5	16
06610-106*X15	M6	15	10	13	14.5	24.5	4	15	30	33.5	40	47	7.5	16
06610-106*X20	M6	20	10	13	14.5	24.5	4	15	30	33.5	40	47	7.5	16
06610-106*X25	M6	25	10	13	14.5	24.5	4	15	30	33.5	40	47	7.5	16
06610-106*X30	M6	30	10	13	14.5	24.5	4	15	30	33.5	40	47	7.5	16
06610-106*X35	M6	35	10	13	14.5	24.5	4	15	30	33.5	40	47	7.5	16
06610-106*X40	M6	40	10	13	14.5	24.5	4	15	30	33.5	40	47	7.5	16
06610-106*X45	M6	45	10	13	14.5	24.5	4	15	30	33.5	40	47	7.5	16
06610-106*X50	M6	50	10	13	14.5	24.5	4	15	30	33.5	40	47	7.5	16
06610-206*X15	M6	15	13.5	18	19.5	28.5	6.5	17.5	41.5	45.5	65	75	9.5	20
06610-206*X20	M6	20	13.5	18	19.5	28.5	6.5	17.5	41.5	45.5	65	75	9.5	20
06610-206*X25	M6	25	13.5	18	19.5	28.5	6.5	17.5	41.5	45.5	65	75	9.5	20
06610-206*X30	M6	30	13.5	18	19.5	28.5	6.5	17.5	41.5	45.5	65	75	9.5	20
06610-206*X35	M6	35	13.5	18	19.5	28.5	6.5	17.5	41.5	45.5	65	75	9.5	20
06610-206*X40	M6	40	13.5	18	19.5	28.5	6.5	17.5	41.5	45.5	65	75	9.5	20
06610-206*X45	M6	45	13.5	18	19.5	28.5	6.5	17.5	41.5	45.5	65	75	9.5	20
06610-206*X50	M6	50	13.5	18	19.5	28.5	6.5	17.5	41.5	45.5	65	75	9.5	20
06610-206*X55	M6	55	13.5	18	19.5	28.5	6.5	17.5	41.5	45.5	65	75	9.5	20
06610-206*X60	M6	60	13.5	18	19.5	28.5	6.5	17.5	41.5	45.5	65	75	9.5	20
06610-208*X15	M8	15	13.5	18	19.5	28.5	6.5	17.5	41.5	45.5	65	75	9.5	20
06610-208*X20	M8	20	13.5	18	19.5	28.5	6.5	17.5	41.5	45.5	65	75	9.5	20
06610-208*X25	M8	25	13.5	18	19.5	28.5	6.5	17.5	41.5	45.5	65	75	9.5	20
06610-208*X30	M8	30	13.5	18	19.5	28.5	6.5	17.5	41.5	45.5	65	75	9.5	20
06610-208*X35	M8	35	13.5	18	19.5	28.5	6.5	17.5	41.5	45.5	65	75	9.5	20
06610-208*X40	M8	40	13.5	18	19.5	28.5	6.5	17.5	41.5	45.5	65	75	9.5	20
06610-208*X45	M8	45	13.5	18	19.5	28.5	6.5	17.5	41.5	45.5	65	75	9.5	20
06610-208*X50	M8	50	13.5	18	19.5	28.5	6.5	17.5	41.5	45.5	65	75	9.5	20
06610-208*X55	M8	55	13.5	18	19.5	28.5	6.5	17.5	41.5	45.5	65	75	9.5	20
06610-208*X60	M8	60	13.5	18	19.5	28.5	6.5	17.5	41.5	45.5	65	75	9.5	20
06610-210*X15	M10	15	13.5	18	19.5	28.5	6.5	17.5	41.5	45.5	65	75	9.5	20
06610-210*X20	M10	20	13.5	18	19.5	28.5	6.5	17.5	41.5	45.5	65	75	9.5	20
06610-210*X25	M10	25	13.5	18	19.5	28.5	6.5	17.5	41.5	45.5	65	75	9.5	20
06610-210*X30	M10	30	13.5	18	19.5	28.5	6.5	17.5	41.5	45.5	65	75	9.5	20
06610-210*X35	M10	35	13.5	18	19.5	28.5	6.5	17.5	41.5	45.5	65	75	9.5	20
06610-210*X40	M10	40	13.5	18	19.5	28.5	6.5	17.5	41.5	45.5	65	75	9.5	20
06610-210*X45	M10	45	13.5	18	19.5	28.5	6.5	17.5	41.5	45.5	65	75	9.5	20
06610-210*X50	M10	50	13.5	18	19.5	28.5	6.5	17.5	41.5	45.5	65	75	9.5	20
06610-210*X55	M10	55	13.5	18	19.5	28.5	6.5	17.5	41.5	45.5	65	75	9.5	20
06610-210*X60	M10	60	13.5	18	19.5	28.5	6.5	17.5	41.5	45.5	65	75	9.5	20

* Add the color to the part number here. Dark Grey = 1, Orange = 2, Signal Green = 86, Traffic Red = 84, Bright Yellow = 16 and Traffic Blue = 87. See www.fixtureworks.net for colors.



ADJUSTABLE CLAMP HANDLES

Plastic | Male Threads | Steel Studs | Metric (continued)

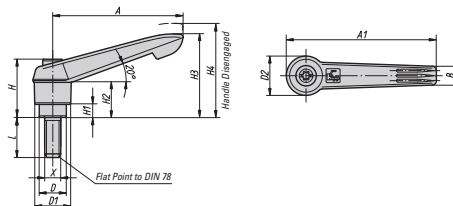
METRIC (CONTINUED)

Part #	X Thread	L mm	D mm	D1 mm	D2 mm	H mm	H1 mm	H2 mm	H3 mm	H4 mm	A mm	A1 mm	B mm	No. Of Teeth
06610-308*X15	M8	15	16	21.5	23	37	10	24	53.5	58	80	91.5	11	22
06610-308*X20	M8	20	16	21.5	23	37	10	24	53.5	58	80	91.5	11	22
06610-308*X25	M8	25	16	21.5	23	37	10	24	53.5	58	80	91.5	11	22
06610-308*X30	M8	30	16	21.5	23	37	10	24	53.5	58	80	91.5	11	22
06610-308*X35	M8	35	16	21.5	23	37	10	24	53.5	58	80	91.5	11	22
06610-308*X40	M8	40	16	21.5	23	37	10	24	53.5	58	80	91.5	11	22
06610-308*X45	M8	45	16	21.5	23	37	10	24	53.5	58	80	91.5	11	22
06610-308*X50	M8	50	16	21.5	23	37	10	24	53.5	58	80	91.5	11	22
06610-308*X55	M8	55	16	21.5	23	37	10	24	53.5	58	80	91.5	11	22
06610-308*X60	M8	60	16	21.5	23	37	10	24	53.5	58	80	91.5	11	22
06610-310*X15	M10	15	16	21.5	23	37	10	24	53.5	58	80	91.5	11	22
06610-310*X20	M10	20	16	21.5	23	37	10	24	53.5	58	80	91.5	11	22
06610-310*X25	M10	25	16	21.5	23	37	10	24	53.5	58	80	91.5	11	22
06610-310*X30	M10	30	16	21.5	23	37	10	24	53.5	58	80	91.5	11	22
06610-310*X35	M10	35	16	21.5	23	37	10	24	53.5	58	80	91.5	11	22
06610-310*X40	M10	40	16	21.5	23	37	10	24	53.5	58	80	91.5	11	22
06610-310*X45	M10	45	16	21.5	23	37	10	24	53.5	58	80	91.5	11	22
06610-310*X50	M10	50	16	21.5	23	37	10	24	53.5	58	80	91.5	11	22
06610-310*X55	M10	55	16	21.5	23	37	10	24	53.5	58	80	91.5	11	22
06610-310*X60	M10	60	16	21.5	23	37	10	24	53.5	58	80	91.5	11	22
06610-410*X20	M10	20	19	25.5	27.5	43	10	26	61	66	95	109	13	24
06610-410*X25	M10	25	19	25.5	27.5	43	10	26	61	66	95	109	13	24
06610-410*X30	M10	30	19	25.5	27.5	43	10	26	61	66	95	109	13	24
06610-410*X35	M10	35	19	25.5	27.5	43	10	26	61	66	95	109	13	24
06610-410*X40	M10	40	19	25.5	27.5	43	10	26	61	66	95	109	13	24
06610-410*X45	M10	45	19	25.5	27.5	43	10	26	61	66	95	109	13	24
06610-410*X50	M10	50	19	25.5	27.5	43	10	26	61	66	95	109	13	24
06610-410*X55	M10	55	19	25.5	27.5	43	10	26	61	66	95	109	13	24
06610-410*X60	M10	60	19	25.5	27.5	43	10	26	61	66	95	109	13	24
06610-410*X70	M10	70	19	25.5	27.5	43	10	26	61	66	95	109	13	24
06610-410*X80	M10	80	19	25.5	27.5	43	10	26	61	66	95	109	13	24
06610-410*X90	M10	90	19	25.5	27.5	43	10	26	61	66	95	109	13	24
06610-412*X20	M12	20	19	25.5	27.5	43	10	26	61	66	95	109	13	24
06610-412*X25	M12	25	19	25.5	27.5	43	10	26	61	66	95	109	13	24
06610-412*X30	M12	30	19	25.5	27.5	43	10	26	61	66	95	109	13	24
06610-412*X35	M12	35	19	25.5	27.5	43	10	26	61	66	95	109	13	24
06610-412*X40	M12	40	19	25.5	27.5	43	10	26	61	66	95	109	13	24
06610-412*X45	M12	45	19	25.5	27.5	43	10	26	61	66	95	109	13	24
06610-412*X50	M12	50	19	25.5	27.5	43	10	26	61	66	95	109	13	24
06610-412*X55	M12	55	19	25.5	27.5	43	10	26	61	66	95	109	13	24
06610-412*X60	M12	60	19	25.5	27.5	43	10	26	61	66	95	109	13	24
06610-412*X70	M12	70	19	25.5	27.5	43	10	26	61	66	95	109	13	24
06610-412*X80	M12	80	19	25.5	27.5	43	10	26	61	66	95	109	13	24
06610-412*X90	M12	90	19	25.5	27.5	43	10	26	61	66	95	109	13	24
06610-512*X25	M12	25	23	30	32.5	49	12	33	72	77	110	126	15.5	26
06610-512*X30	M12	30	23	30	32.5	49	12	33	72	77	110	126	15.5	26
06610-512*X35	M12	35	23	30	32.5	49	12	33	72	77	110	126	15.5	26
06610-512*X40	M12	40	23	30	32.5	49	12	33	72	77	110	126	15.5	26
06610-512*X45	M12	45	23	30	32.5	49	12	33	72	77	110	126	15.5	26
06610-512*X50	M12	50	23	30	32.5	49	12	33	72	77	110	126	15.5	26
06610-512*X55	M12	55	23	30	32.5	49	12	33	72	77	110	126	15.5	26
06610-512*X60	M12	60	23	30	32.5	49	12	33	72	77	110	126	15.5	26
06610-512*X70	M12	70	23	30	32.5	49	12	33	72	77	110	126	15.5	26
06610-512*X80	M12	80	23	30	32.5	49	12	33	72	77	110	126	15.5	26
06610-512*X90	M12	90	23	30	32.5	49	12	33	72	77	110	126	15.5	26
06610-516*X25	M16	25	23	30	32.5	49	12	33	72	77	110	126	15.5	26
06610-516*X30	M16	30	23	30	32.5	49	12	33	72	77	110	126	15.5	26
06610-516*X35	M16	35	23	30	32.5	49	12	33	72	77	110	126	15.5	26
06610-516*X40	M16	40	23	30	32.5	49	12	33	72	77	110	126	15.5	26
06610-516*X45	M16	45	23	30	32.5	49	12	33	72	77	110	126	15.5	26
06610-516*X50	M16	50	23	30	32.5	49	12	33	72	77	110	126	15.5	26
06610-516*X55	M16	55	23	30	32.5	49	12	33	72	77	110	126	15.5	26
06610-516*X60	M16	60	23	30	32.5	49	12	33	72	77	110	126	15.5	26
06610-516*X70	M16	70	23	30	32.5	49	12	33	72	77	110	126	15.5	26
06610-516*X80	M16	80	23	30	32.5	49	12	33	72	77	110	126	15.5	26
06610-516*X90	M16	90	23	30	32.5	49	12	33	72	77	110	126	15.5	26

* Add the color to the part number here. Dark Grey = 1, Orange = 2, Signal Green = 86, Traffic Red = 84, Bright Yellow = 16 and Traffic Blue = 87. See www.fixtureworks.net for colors.

ADJUSTABLE CLAMP HANDLES

Plastic | Male Threads | Stainless Steel Studs | Inch



Pulling up on the handle disengages it from the spline and allows it to rotate freely for adjustment. Releasing the handle engages it for tightening or adjusting. The handle is made from glass fiber reinforced plastic. Internal parts and studs are made from stainless steel. They are available in dark grey, orange, signal green, traffic red, bright yellow and traffic blue. See www.fixteworks.net for colors.

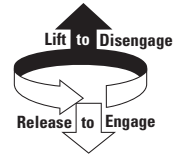
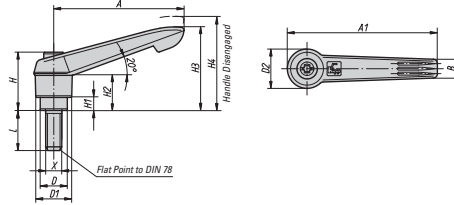
INCH

Part #	X Thread	L	D	D1	D2	H	H1	H2	H3	H4	A	A1	B	No. Of Teeth
06611-1A0*X15	10-24	.59	.39	.51	.57	.96	.16	.59	1.18	1.32	1.57	1.85	.30	16
06611-1A0*X20	10-24	.79	.39	.51	.57	.96	.16	.59	1.18	1.32	1.57	1.85	.30	16
06611-1A0*X25	10-24	.98	.39	.51	.57	.96	.16	.59	1.18	1.32	1.57	1.85	.30	16
06611-1A2*X10	1/4-20	.39	.39	.51	.57	.96	.16	.59	1.18	1.32	1.57	1.85	.30	16
06611-1A2*X15	1/4-20	.59	.39	.51	.57	.96	.16	.59	1.18	1.32	1.57	1.85	.30	16
06611-1A2*X20	1/4-20	.79	.39	.51	.57	.96	.16	.59	1.18	1.32	1.57	1.85	.30	16
06611-1A2*X25	1/4-20	.98	.39	.51	.57	.96	.16	.59	1.18	1.32	1.57	1.85	.30	16
06611-1A2*X30	1/4-20	1.18	.39	.51	.57	.96	.16	.59	1.18	1.32	1.57	1.85	.30	16
06611-1A2*X40	1/4-20	1.57	.39	.51	.57	.96	.16	.59	1.18	1.32	1.57	1.85	.30	16
06611-1A2*X50	1/4-20	1.97	.39	.51	.57	.96	.16	.59	1.18	1.32	1.57	1.85	.30	16
06611-2A2*X15	1/4-20	.59	.53	.71	.77	1.12	.26	.69	1.63	1.79	2.56	2.95	.37	20
06611-2A2*X20	1/4-20	.79	.53	.71	.77	1.12	.26	.69	1.63	1.79	2.56	2.95	.37	20
06611-2A2*X25	1/4-20	.98	.53	.71	.77	1.12	.26	.69	1.63	1.79	2.56	2.95	.37	20
06611-2A2*X30	1/4-20	1.18	.53	.71	.77	1.12	.26	.69	1.63	1.79	2.56	2.95	.37	20
06611-2A2*X40	1/4-20	1.57	.53	.71	.77	1.12	.26	.69	1.63	1.79	2.56	2.95	.37	20
06611-2A2*X50	1/4-20	1.97	.53	.71	.77	1.12	.26	.69	1.63	1.79	2.56	2.95	.37	20
06611-2A2*X60	1/4-20	2.36	.53	.71	.77	1.12	.26	.69	1.63	1.79	2.56	2.95	.37	20
06611-2A3*X15	5/16-18	.59	.53	.71	.77	1.12	.26	.69	1.63	1.79	2.56	2.95	.37	20
06611-2A3*X20	5/16-18	.79	.53	.71	.77	1.12	.26	.69	1.63	1.79	2.56	2.95	.37	20
06611-2A3*X25	5/16-18	.98	.53	.71	.77	1.12	.26	.69	1.63	1.79	2.56	2.95	.37	20
06611-2A3*X30	5/16-18	1.18	.53	.71	.77	1.12	.26	.69	1.63	1.79	2.56	2.95	.37	20
06611-2A3*X40	5/16-18	1.57	.53	.71	.77	1.12	.26	.69	1.63	1.79	2.56	2.95	.37	20
06611-2A3*X50	5/16-18	1.97	.53	.71	.77	1.12	.26	.69	1.63	1.79	2.56	2.95	.37	20
06611-2A3*X60	5/16-18	2.36	.53	.71	.77	1.12	.26	.69	1.63	1.79	2.56	2.95	.37	20
06611-2A4*X20	3/8-16	.79	.53	.71	.77	1.12	.26	.69	1.63	1.79	2.56	2.95	.37	20
06611-2A4*X25	3/8-16	.98	.53	.71	.77	1.12	.26	.69	1.63	1.79	2.56	2.95	.37	20
06611-2A4*X30	3/8-16	1.18	.53	.71	.77	1.12	.26	.69	1.63	1.79	2.56	2.95	.37	20
06611-2A4*X40	3/8-16	1.57	.53	.71	.77	1.12	.26	.69	1.63	1.79	2.56	2.95	.37	20
06611-2A4*X50	3/8-16	1.97	.53	.71	.77	1.12	.26	.69	1.63	1.79	2.56	2.95	.37	20
06611-2A4*X60	3/8-16	2.36	.53	.71	.77	1.12	.26	.69	1.63	1.79	2.56	2.95	.37	20
06611-3A3*X20	5/16-18	.79	.63	.85	.91	1.46	.39	.94	2.11	2.28	3.15	3.60	.43	22
06611-3A3*X25	5/16-18	.98	.63	.85	.91	1.46	.39	.94	2.11	2.28	3.15	3.60	.43	22
06611-3A3*X30	5/16-18	1.18	.63	.85	.91	1.46	.39	.94	2.11	2.28	3.15	3.60	.43	22
06611-3A3*X40	5/16-18	1.57	.63	.85	.91	1.46	.39	.94	2.11	2.28	3.15	3.60	.43	22
06611-3A3*X50	5/16-18	1.97	.63	.85	.91	1.46	.39	.94	2.11	2.28	3.15	3.60	.43	22
06611-3A3*X60	5/16-18	2.36	.63	.85	.91	1.46	.39	.94	2.11	2.28	3.15	3.60	.43	22
06611-3A4*X20	3/8-16	.79	.63	.85	.91	1.46	.39	.94	2.11	2.28	3.15	3.60	.43	22
06611-3A4*X25	3/8-16	.98	.63	.85	.91	1.46	.39	.94	2.11	2.28	3.15	3.60	.43	22
06611-3A4*X30	3/8-16	1.18	.63	.85	.91	1.46	.39	.94	2.11	2.28	3.15	3.60	.43	22
06611-3A4*X40	3/8-16	1.57	.63	.85	.91	1.46	.39	.94	2.11	2.28	3.15	3.60	.43	22
06611-3A4*X50	3/8-16	1.97	.63	.85	.91	1.46	.39	.94	2.11	2.28	3.15	3.60	.43	22
06611-3A4*X60	3/8-16	2.36	.63	.85	.91	1.46	.39	.94	2.11	2.28	3.15	3.60	.43	22
06611-4A5*X25	1/2-13	.98	.75	1.00	1.08	1.69	.39	1.02	2.40	2.60	3.74	4.29	.51	24
06611-4A5*X30	1/2-13	1.18	.75	1.00	1.08	1.69	.39	1.02	2.40	2.60	3.74	4.29	.51	24
06611-4A5*X40	1/2-13	1.57	.75	1.00	1.08	1.69	.39	1.02	2.40	2.60	3.74	4.29	.51	24
06611-4A5*X50	1/2-13	1.97	.75	1.00	1.08	1.69	.39	1.02	2.40	2.60	3.74	4.29	.51	24
06611-4A5*X60	1/2-13	2.36	.75	1.00	1.08	1.69	.39	1.02	2.40	2.60	3.74	4.29	.51	24
06611-5A6*X30	5/8-11	1.18	.91	1.18	1.28	1.93	.47	1.30	2.83	3.03	4.33	4.96	.61	26
06611-5A6*X40	5/8-11	1.57	.91	1.18	1.28	1.93	.47	1.30	2.83	3.03	4.33	4.96	.61	26
06611-5A6*X50	5/8-11	1.97	.91	1.18	1.28	1.93	.47	1.30	2.83	3.03	4.33	4.96	.61	26
06611-5A6*X60	5/8-11	2.36	.91	1.18	1.28	1.93	.47	1.30	2.83	3.03	4.33	4.96	.61	26

* Add the color to the part number here. Dark Grey = 1, Orange = 2, Signal Green = 86, Traffic Red = 84, Bright Yellow = 16 and Traffic Blue = 87. See www.fixteworks.net for colors.

ADJUSTABLE CLAMP HANDLES

Plastic | Male Threads | Stainless Steel Studs | Metric



Pulling up on the handle disengages it from the spline and allows it to rotate freely for adjustment. Releasing the handle engages it for tightening or adjusting. The handle is made from glass fiber reinforced plastic. Internal parts and studs are made from stainless steel. They are available in dark grey, orange, signal green, traffic red, bright yellow and traffic blue. See www.fixteworks.net for colors.

METRIC

Part #	X Thread	L mm	D mm	D1 mm	D2 mm	H mm	H1 mm	H2 mm	H3 mm	H4 mm	A mm	A1 mm	B mm	No. Of Teeth
06611-105*X15	M5	15	10	13	14.5	24.5	4	15	30	33.5	40	47	7.5	16
06611-105*X20	M5	20	10	13	14.5	24.5	4	15	30	33.5	40	47	7.5	16
06611-105*X25	M5	25	10	13	14.5	24.5	4	15	30	33.5	40	47	7.5	16
06611-106*X10	M6	10	10	13	14.5	24.5	4	15	30	33.5	40	47	7.5	16
06611-106*X15	M6	15	10	13	14.5	24.5	4	15	30	33.5	40	47	7.5	16
06611-106*X20	M6	20	10	13	14.5	24.5	4	15	30	33.5	40	47	7.5	16
06611-106*X25	M6	25	10	13	14.5	24.5	4	15	30	33.5	40	47	7.5	16
06611-106*X30	M6	30	10	13	14.5	24.5	4	15	30	33.5	40	47	7.5	16
06611-106*X40	M6	40	10	13	14.5	24.5	4	15	30	33.5	40	47	7.5	16
06611-106*X50	M6	50	10	13	14.5	24.5	4	15	30	33.5	40	47	7.5	16
06611-206*X15	M6	15	13.5	18	19.5	28.5	6.5	17.5	41.5	45.5	65	75	9.5	20
06611-206*X20	M6	20	13.5	18	19.5	28.5	6.5	17.5	41.5	45.5	65	75	9.5	20
06611-206*X25	M6	25	13.5	18	19.5	28.5	6.5	17.5	41.5	45.5	65	75	9.5	20
06611-206*X30	M6	30	13.5	18	19.5	28.5	6.5	17.5	41.5	45.5	65	75	9.5	20
06611-206*X40	M6	40	13.5	18	19.5	28.5	6.5	17.5	41.5	45.5	65	75	9.5	20
06611-206*X50	M6	50	13.5	18	19.5	28.5	6.5	17.5	41.5	45.5	65	75	9.5	20
06611-206*X60	M6	60	13.5	18	19.5	28.5	6.5	17.5	41.5	45.5	65	75	9.5	20
06611-208*X15	M8	15	13.5	18	19.5	28.5	6.5	17.5	41.5	45.5	65	75	9.5	20
06611-208*X20	M8	20	13.5	18	19.5	28.5	6.5	17.5	41.5	45.5	65	75	9.5	20
06611-208*X25	M8	25	13.5	18	19.5	28.5	6.5	17.5	41.5	45.5	65	75	9.5	20
06611-208*X30	M8	30	13.5	18	19.5	28.5	6.5	17.5	41.5	45.5	65	75	9.5	20
06611-208*X40	M8	40	13.5	18	19.5	28.5	6.5	17.5	41.5	45.5	65	75	9.5	20
06611-208*X50	M8	50	13.5	18	19.5	28.5	6.5	17.5	41.5	45.5	65	75	9.5	20
06611-208*X60	M8	60	13.5	18	19.5	28.5	6.5	17.5	41.5	45.5	65	75	9.5	20
06611-210*X20	M10	20	13.5	18	19.5	28.5	6.5	17.5	41.5	45.5	65	75	9.5	20
06611-210*X25	M10	25	13.5	18	19.5	28.5	6.5	17.5	41.5	45.5	65	75	9.5	20
06611-210*X30	M10	30	13.5	18	19.5	28.5	6.5	17.5	41.5	45.5	65	75	9.5	20
06611-210*X40	M10	40	13.5	18	19.5	28.5	6.5	17.5	41.5	45.5	65	75	9.5	20
06611-210*X50	M10	50	13.5	18	19.5	28.5	6.5	17.5	41.5	45.5	65	75	9.5	20
06611-210*X60	M10	60	13.5	18	19.5	28.5	6.5	17.5	41.5	45.5	65	75	9.5	20
06611-308*X20	M8	20	16	21.5	23	37	10	24	53.5	58	80	91.5	11	22
06611-308*X25	M8	25	16	21.5	23	37	10	24	53.5	58	80	91.5	11	22
06611-308*X30	M8	30	16	21.5	23	37	10	24	53.5	58	80	91.5	11	22
06611-308*X40	M8	40	16	21.5	23	37	10	24	53.5	58	80	91.5	11	22
06611-308*X50	M8	50	16	21.5	23	37	10	24	53.5	58	80	91.5	11	22
06611-308*X60	M8	60	16	21.5	23	37	10	24	53.5	58	80	91.5	11	22
06611-310*X20	M10	20	16	21.5	23	37	10	24	53.5	58	80	91.5	11	22
06611-310*X25	M10	25	16	21.5	23	37	10	24	53.5	58	80	91.5	11	22
06611-310*X30	M10	30	16	21.5	23	37	10	24	53.5	58	80	91.5	11	22
06611-310*X40	M10	40	16	21.5	23	37	10	24	53.5	58	80	91.5	11	22
06611-310*X50	M10	50	16	21.5	23	37	10	24	53.5	58	80	91.5	11	22
06611-310*X60	M10	60	16	21.5	23	37	10	24	53.5	58	80	91.5	11	22
06611-412*X25	M12	25	19	25.5	27.5	43	10	26	61	66	95	109	13	24
06611-412*X30	M12	30	19	25.5	27.5	43	10	26	61	66	95	109	13	24
06611-412*X40	M12	40	19	25.5	27.5	43	10	26	61	66	95	109	13	24
06611-412*X50	M12	50	19	25.5	27.5	43	10	26	61	66	95	109	13	24
06611-412*X60	M12	60	19	25.5	27.5	43	10	26	61	66	95	109	13	24
06611-516*X30	M16	30	23	30	32.5	49	12	33	72	77	110	126	15.5	26
06611-516*X40	M16	40	23	30	32.5	49	12	33	72	77	110	126	15.5	26
06611-516*X50	M16	50	23	30	32.5	49	12	33	72	77	110	126	15.5	26
06611-516*X60	M16	60	23	30	32.5	49	12	33	72	77	110	126	15.5	26

* Add the color to the part number here. Dark Grey = 1, Orange = 2, Signal Green = 86, Traffic Red = 84, Bright Yellow = 16 and Traffic Blue = 87. See www.fixteworks.net for colors.