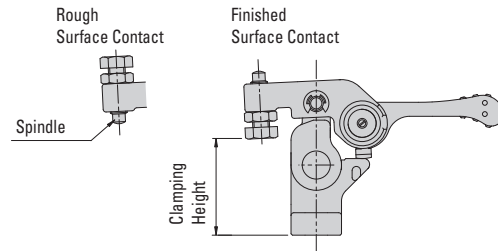
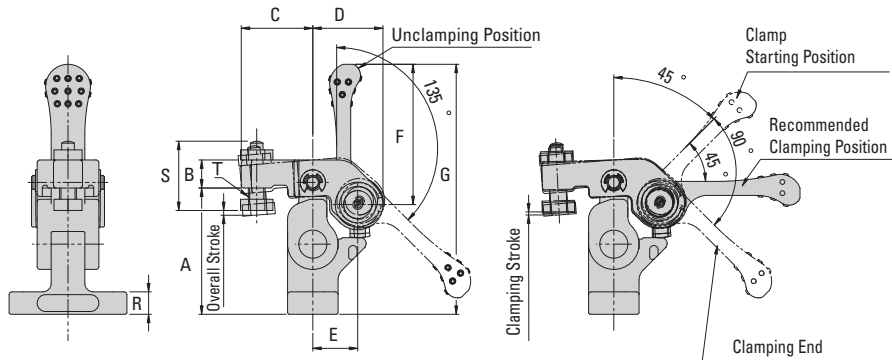
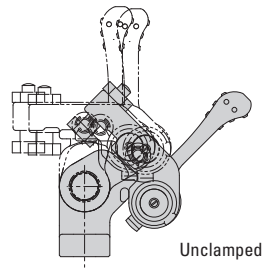
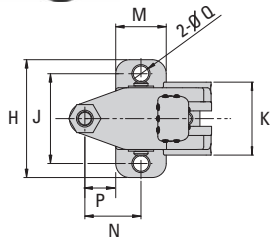


## ROCKER CLAMPS W/ CAM HANDLE - MINIATURE



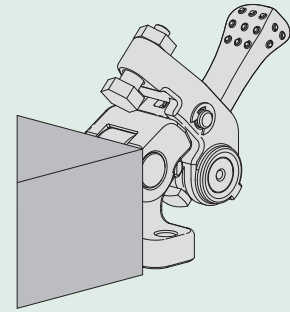
These miniature rocker clamps pivot completely away from the work piece for easy loading and unloading. The clamp moves forward and downward into position and clamps straight down onto the work piece for direct downward pressure. The cam handle is then pushed down for final workholding pressure. These clamps are ideal for repetitive accurate clamping operations. They come with a contact bolt that can be reversed for finished or rough work piece surfaces. Mounts from the top with two mounting holes. The body and spindle are made from SAE-1045 alloy steel. The arm and joint are made from SAE-4135 alloy steel. The handle is made from SAE-4140 alloy steel. Parts are heat treated with black oxide finish.

Part #	A mm	B mm	C mm	D mm	E mm	F mm	G mm	H mm	J mm	K mm	M mm	N mm	P mm	Q mm	R mm	S mm	T mm
QLRE100	45	10	25.5	25	16	50	89	42	32	26	18	20	11	5.5	8	24.0	M6X1
QLRE150	55	12	32.0	31	20	63	109	52	40	32	22	25	14	6.6	10	30.5	M8X1.25

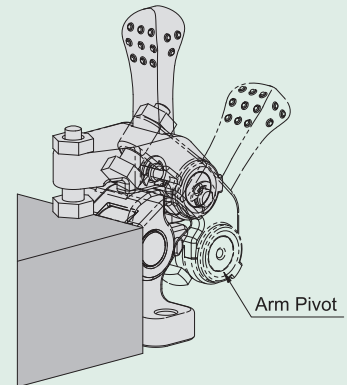
### Clamping Information

Part #	CLAMPING Finished Surface mm	HEIGHT Rough Surface mm	Clamping Stroke mm	Overall Stroke mm	Clamping Force lbs.	Handle Load lbs.
QLRE100	31.5 - 40.5	34.5 - 43.5	1.0	1.5	150	22
QLRE150	36.4 - 48.6	41.4 - 53.6	1.2	1.8	247	33

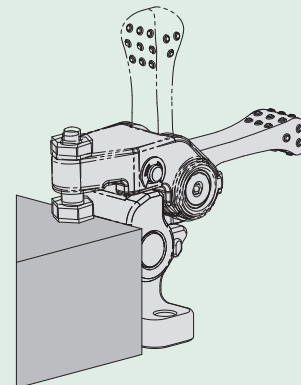
### How To Use



1. Unclamped  
Load a workpiece



2. Clamping Setup  
Set the arm in clamping position holding it at the arm pivot.



3. Clamping  
Set the handle down to clamp the workpiece.

For unclamping, reverse the above steps.