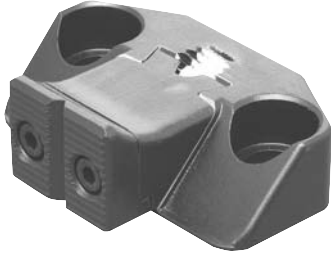
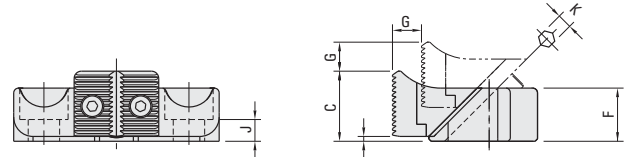
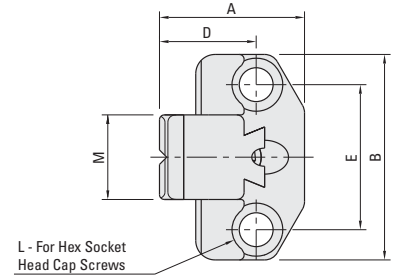


## COMPACT SIDE CLAMPS



These side clamps have a low profile to keep the clamp out of the way from machining operations. Clamp moves downward and forward as it is engaged, forcing the work piece against the supports and stops. Clamping surface is serrated for greater gripping strength. Install by drilling and tapping a cap screw hole and locking pin hole. Flat washer included. The body and jaws are made from SAE-4140 alloy steel, heat treated with black oxide finish.

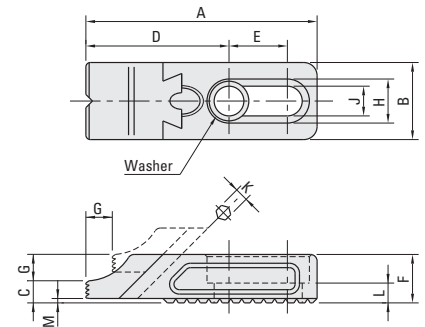


Part #	A mm	B mm	C mm	D mm	E mm	F mm	G mm	H mm	J mm	K mm	L mm	M mm	Clamping Force lbs.	Screw Torque Ft. lbs.
CP105-08016	39.5	65	19.5	25	45	16	7	1.5	7	4	M8	25	890	5.9
CP105-12022	60.0	85	29.0	40	60	22	12	2.0	9	6	M12	35	2020	19.0
CP105-16030	77.0	100	38.0	50	70	30	14	2.0	13	8	M16	40	3800	44.0

## ADJUSTABLE SIDE CLAMPS - LOW PROFILE



These adjustable side clamps have a low profile to keep clamp out of the way from machining operation. The clamp moves downward and forward as it is engaged, forcing the work piece against the supports and stops. Clamping surface is serrated for greater gripping strength. The body and jaw are made from SAE-4140 alloy steel, heat treated with black oxide finish.

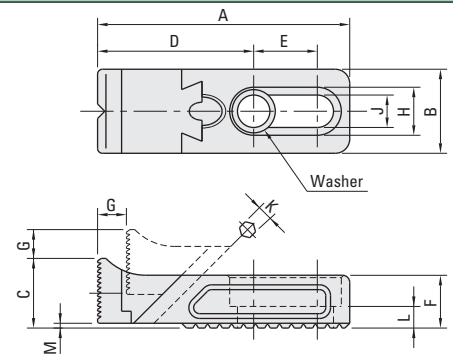


Part #	A mm	B mm	C mm	D mm	E mm	F mm	G mm	H mm	J mm	K mm	L mm	M mm	Clamping Force lbs.	Screw Torque Ft. lbs.
BJ101-08016	72.0	25	7.5	45.5	16.5	16	7	14	8.5	4	7	1.5	800	4.7
BJ101-12022	105.0	35	10.0	65.0	26.5	22	12	20	13.0	6	9	2.0	1663	14.0
BJ101-16030	137.0	40	14.0	89.5	30.0	30	14	26	17.0	8	13	2.0	2630	23.0

## ADJUSTABLE SIDE CLAMPS



The tall jaws offer larger clamping surface. The clamping surface is serrated for greater clamping strength. The jaws move downward and forward as it is engaged, forcing the work piece against the supports and stops. Allows for quick removal and insertion of parts. The body and jaws are made from SAE-4140 alloy steel, heat treated with black oxide finish.



Part #	A mm	B mm	C mm	D mm	E mm	F mm	G mm	H mm	J mm	K mm	L mm	M mm	Clamping Force lbs.	Screw Torque Ft. lbs.
BJ102-08016	72	25	19.5	45.5	16.5	16	7	14	8.5	4	7	1.5	800	4.7
BJ102-12022	105	35	29.0	65.0	26.5	22	12	20	13.0	6	9	2.0	1663	14.0
BJ102-16030	137	40	38.0	89.5	30.0	30	14	26	17.0	8	13	2.0	2630	23.0