



## Pressure, Level & Temperature Transmitters & Transducers

2770 Long Road, Grand Island, NY 14072 USA

Tel. (716) 773-9300 • Fax (716) 773-5019

sales@gp50.com • www.gp50.com

### SMART DIFFERENTIAL PRESSURE TRANSMITTER

### Model GPIDP



#### Approvals



#### FEATURES:

- High accuracy (see specifications on reverse side)
- 3,625 PSI static line & single sided overpressure protection
- 4-20 mA output, available with or without HART® communication
- 30:1 turn down
- Push button adjust with LCD display
- Exotic wetted parts available

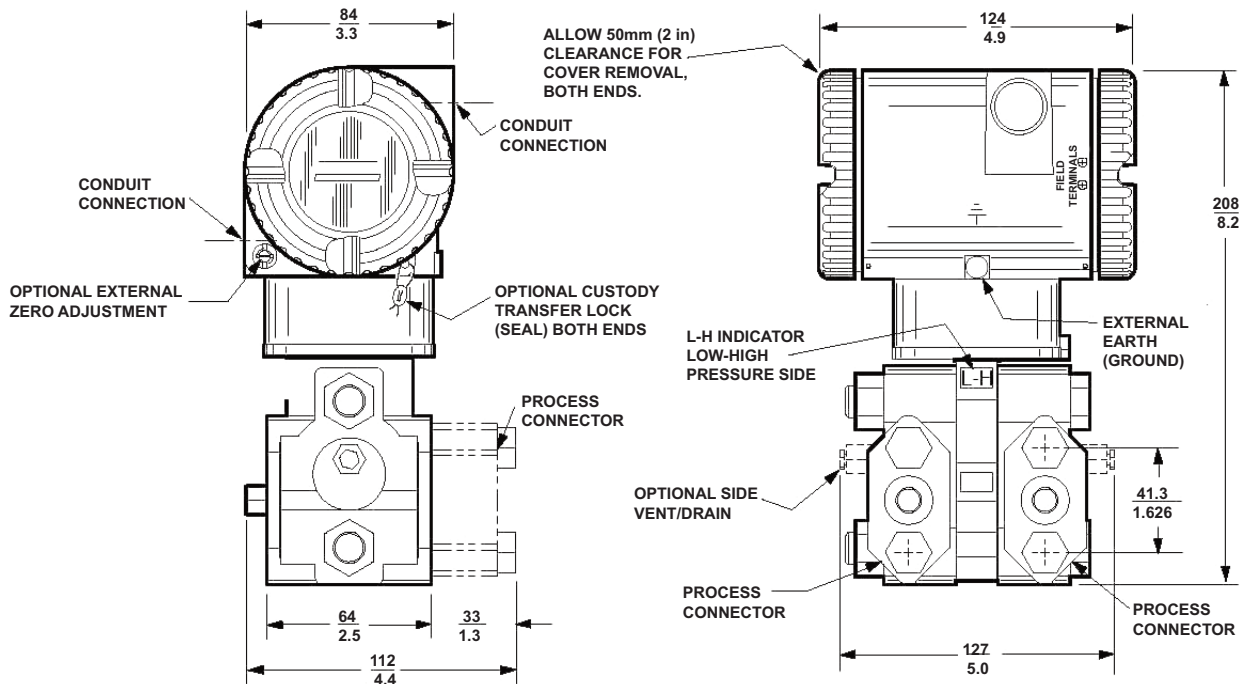
#### PRESSURE RANGES:

- From 0-0.5" WC through 0-3000 psid

#### APPLICATIONS:

- Chemical processing
- Sanitary tank level
- Tank level
- Water Treatment plants

#### TRADITIONAL STRUCTURE DIMENSIONS (NOMINAL) $\frac{\text{mm}}{\text{in}}$



A5SL-GPIDP.00

GP:50 reserves the right to make product improvements and amendments to the product specifications stated throughout this brochure without prior notification. Please contact the factory on all critical dimensions and specifications for verification.



## Pressure, Level & Temperature Transmitters & Transducers

2770 Long Road, Grand Island, NY 14072 USA

Tel. (716) 773-9300 • Fax (716) 773-5019

sales@gp50.com • www.gp50.com

### SMART DIFFERENTIAL PRESSURE TRANSMITTER

### Model GPIDP

Pressure Ranges:						
Code	Span Limits			Range Limits		
	inH <sub>2</sub> O	PSI	Mbar	inH <sub>2</sub> O	PSI	Mbar
A	0.5 thru 30	0.018 thru 1.1	1.2 thru 75	-30 thru +30	-1.1 thru +1.1	-75 thru +75
B	3.5 thru 200	0.125 thru 7.2	8.7 thru 500	-200 thru +200	-7.2 thru +7.2	-500 thru +500
C	28 thru 840	1 thru 30	70 thru 2100	-840 thru +840	-30 thru +30	-2100 thru +2100
	ftH <sub>2</sub> O	PSI	bar or kg/cm <sup>2</sup>	ftH <sub>2</sub> O	PSI	bar or kg/cm <sup>2</sup>
D	23 thru 690	10 thru 300	0.7 thru 21	-69 thru +690	-30 thru +300	-2.1 thru +21
E	230 thru 6900	100 thru 3000	7 thru 210	-69 thru +6900	-30 thru +300	-2.1 thru +210

Positive values indicate HI side of sensor at the high pressure, and negative values indicate LO side of sensor at the high pressure. The upper span and range limits may be reduced by some options, consult factory. Suppressed or elevated zero ranges are acceptable as long as span and range limits are not exceeded.

Signal/Accuracy: (Includes Linearity, Hysteresis and Repeatability)			
Code	Electronic Signal	Configured Signal	Common Span Accuracy
A	4-20mA	4 to 20 mA Linear Sq. Root	± 0.20%
T	4-20mA w/HART®	Digital Linear Digital Sq. Root 4 to 20 mA Linear 4 to 20 mA Sq. Root	±0.050% ±0.080% ±0.075% ±0.105%

Ranging may affect accuracy, consult factory for exact specifications.

Static Line Shift: (Zero and span shift for a 1000 PSI change in static pressure)		
Span Code	Zero Shift	Span Shift
A	± 0.30% URL*	± 0.30% URL
B & C	± 0.10% URL	± 0.25% URL
D	± 0.50% URL*	± 0.25% URL
E	± 0.50% URL	± 0.25% URL

Zero shift can be calibrated out by zeroing at nominal line pressure.  
\* Zero and span shift for a 500 PSI change in static pressure for Span Codes A & D.

Ambient Temperature Effect: (per 50° F)	
Span Code	Specification
A*	± (0.18% URL + 0.15% Span)
B & C	± (0.03% URL + 0.20% Span)
D	± (0.05% URL + 0.18% Span)
E	± (0.08% URL + 0.15% Span)

Temperature Compensation: -20° F to +180° F  
Process Temperature Range: -50° F to +250° F (silicone fill fluid)  
Ambient Temperature Range: -40° F to +185° F  
\*Span Code A specification applies to a transmitter with a stainless steel sensor only.

**LCD Indicator:**  
Operative limits of the standard indicator are -20° F and +185° F (-29° C and +85° C), normal operating limits are -4° F & +185° F (-20° C & +82° C). The LCD indicator will not be damaged at any temperature within the "Storage and Transportation Limits", updates will be slower and readability decreased at temperatures outside "Normal Operating Conditions".

**Environmental Protection:**  
With topworks cover on and conduit entrances sealed, transmitter is dust tight per IEC IP66 and provides environmental protection of NEMA type 4X.

**NOTE:**

Specifications reflect standard product, improved performance / mechanical options available.

Modifications may alter specs, consult factory for more information.